

DO NOT SCALE FROM THIS PRINT

DESIGNED & DIMENSIONED IN INCHES [MILLIMETERS]

PRF01-P-C-EP-200-SS

SERIES
-01: SMA

GENDER
-P: PLUG

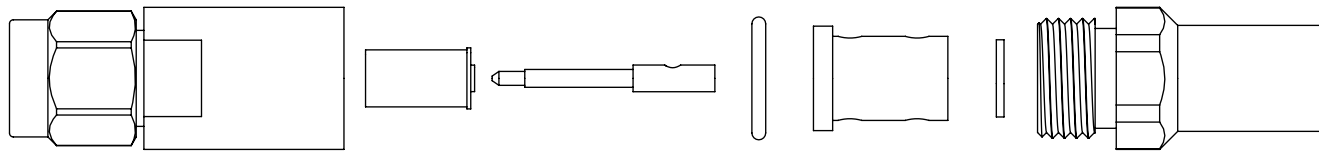
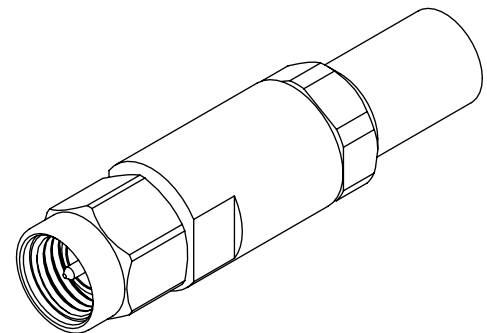
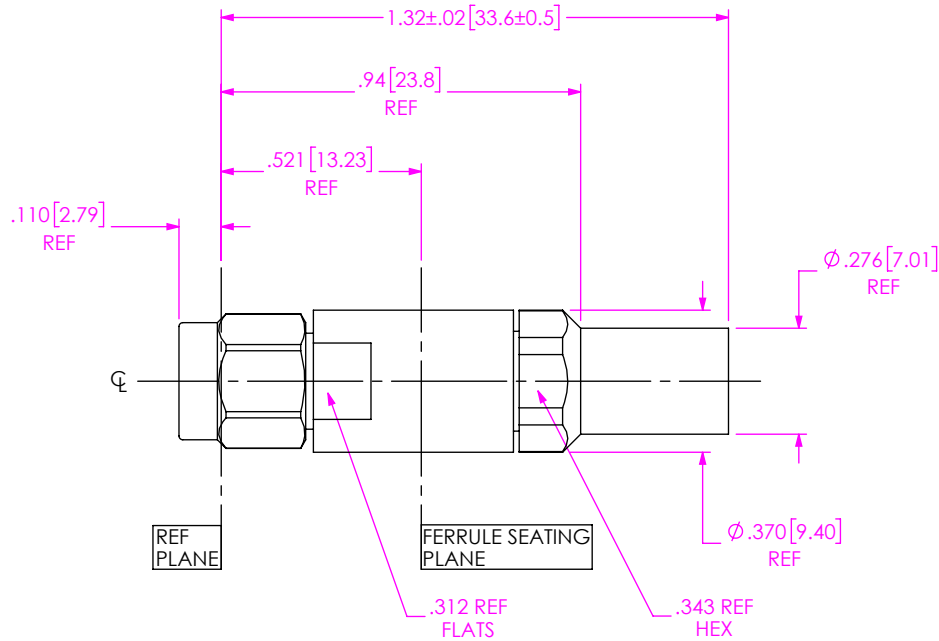
TYPE
-C: CABLE

TERMINATION
S: SOLDER CLAMP

ORIENTATION
-S: STRAIGHT

TERMINATION
-200: TIMES MICRO MAX GAIN 200


PLATING
-EP: 50µ" EXTRA HEAVY GOLD CENTER CONTACT, PASSIVATED OUTER CONTACT



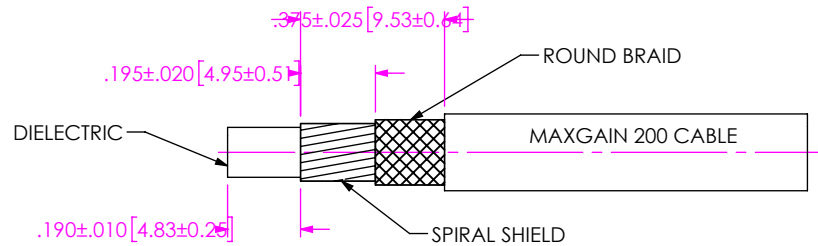
EXPLODED VIEW
NOT TO SCALE
(FOR CLARITY ONLY)

NOTES:

- MATERIAL:
BODY, CLAMP NUT, COUPLING NUT: STAINLESS STEEL.
GASKET, O-RING: SILICONE RUBBER.
INSULATOR: PTFE.
SOLDER FERRULE: BRASS ALLOY
CONTACT, LOCK RING: BERYLLIUM COPPER.
- FINISH:
BODY, CLAMP NUT, COUPLING NUT: PASSIVATED.
CONTACT, SOLDER FERRULE: GOLD OVER NICKEL PLATE,
50 µIN MIN GOLD OVER 50 µIN MIN NICKEL.
- PCI P/N: 3961.

UNLESS OTHERWISE SPECIFIED, DIMENSIONS ARE IN INCHES. TOLERANCES ARE: DECIMALS .XX: ±.01 .XXX: ±.005 .XXXX: ±.0005 ANGLES 1°	* PROPRIETARY NOTE * THIS DOCUMENT CONTAINS CONFIDENTIAL AND PROPRIETARY INFORMATION AND ALL DESIGN, MANUFACTURING, REPRODUCTION, USE, PATENT RIGHTS AND SALES RIGHTS ARE EXPRESSLY RESERVED BY SAMTEC, INC. THIS DOCUMENT SHALL NOT BE DISCLOSED, IN WHOLE OR PART, TO ANY UNAUTHORIZED PERSON OR ENTITY NOR REPRODUCED, TRANSFERRED OR INCORPORATED IN ANY OTHER PROJECT IN ANY MANNER WITHOUT THE EXPRESS WRITTEN CONSENT OF SAMTEC, INC.	 520 PARK EAST BLVD, NEW ALBANY, IN 47150 PHONE: 812-944-6733 FAX: 812-948-5047 e-Mail info@SAMTEC.com code 55322	
		DO NOT SCALE DRAWING SHEET SCALE: 2:1	DESCRIPTION: SMA PLUG, SOLDER CLAMP FOR TIMES MAXGAIN 200 CABLE
		DWG. NO. PRF01-P-C-EP-200-SS	BY: SAMUEL C 05/18/2019 SHEET 1 OF 2

REVISION A



1A. TRIM CABLE TO EXPOSE DIELECTRIC CORE. SPIRAL SHIELD AND BRAID AS SHOWN.

IN-PROCESS VIEW 1

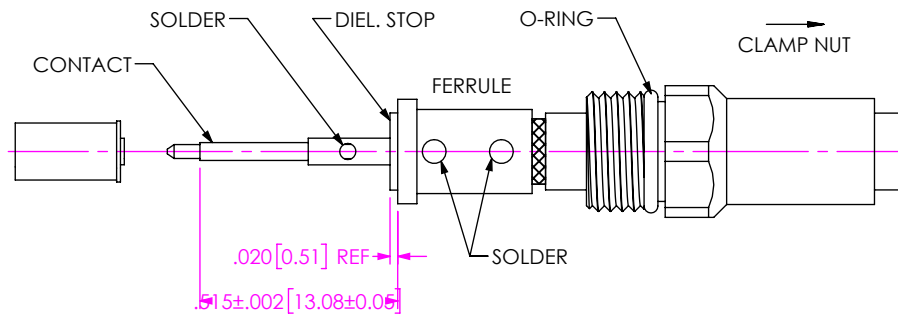
2A. SLIDE CLAMP NUT OVER CABLE IN ORIENTATION AS SHOWN.

2B. INSERT CABLE INTO SOLDER FERRULE UNTIL INNER SHIELD SEATS AND SOLDER TO BRAIDS WHERE SHOWN.

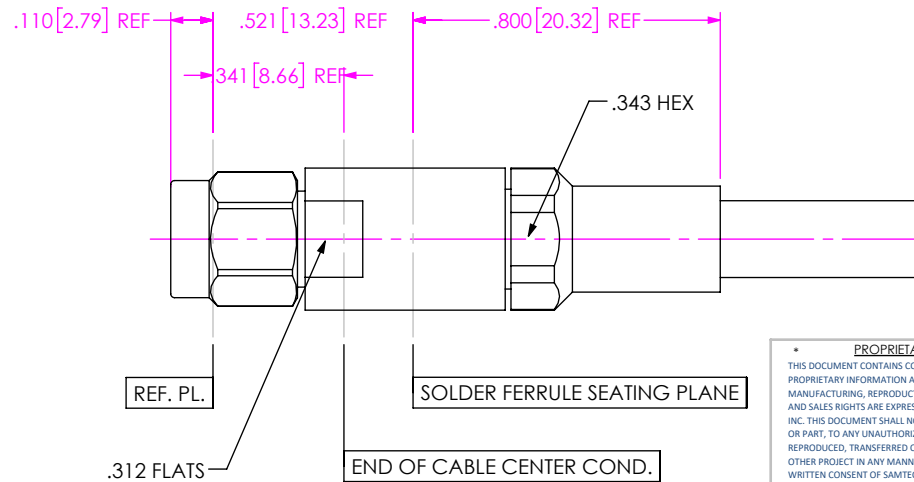
2C. TRIM CABLE DIELECTRIC FLUSH WITH FACE OF FERRULE.

2D. SLIDE DIELECTRIC STOP OVER CABLE CENTER CONDUCTOR AND SOLDER CONTACT FLUSH TO STOP TO DIMENSION SHOWN.

2E. SLIDE INSULATOR ONTO CONTACT AGAINST SHOULDER.



IN-PROCESS VIEW 2



3A. INSERT CABLE/CONTACT SUB-ASSEMBLY INTO CONNECTOR UNTIL SEATED AND TIGHTEN CLAMP NUT TO 25-35 IN-LBS.

IN-PROCESS VIEW 3

PROPRIETARY NOTE
 THIS DOCUMENT CONTAINS CONFIDENTIAL AND PROPRIETARY INFORMATION AND ALL DESIGN, MANUFACTURING, REPRODUCTION, USE, PATENT RIGHTS AND SALES RIGHTS ARE EXPRESSLY RESERVED BY SAMTEC, INC. THIS DOCUMENT SHALL NOT BE DISCLOSED, IN WHOLE OR PART, TO ANY UNAUTHORIZED PERSON OR ENTITY NOR REPRODUCED, TRANSFERRED OR INCORPORATED IN ANY OTHER PROJECT IN ANY MANNER WITHOUT THE EXPRESS WRITTEN CONSENT OF SAMTEC, INC.



520 PARK EAST BLVD, NEW ALBANY, IN 47150
 PHONE: 812-944-6733 FAX: 812-948-5047
 e-Mail: info@SAMTEC.com code 55322

DO NOT SCALE DRAWING

SHEET SCALE: 2:1

DESCRIPTION: SMA PLUG, SOLDER CLAMP FOR TIMES MAXGAIN 200 CABLE

DWG. NO. PRF01-P-C-EP-200-SS

BY: SAMUEL C 05/18/2019 SHEET 2 OF 2