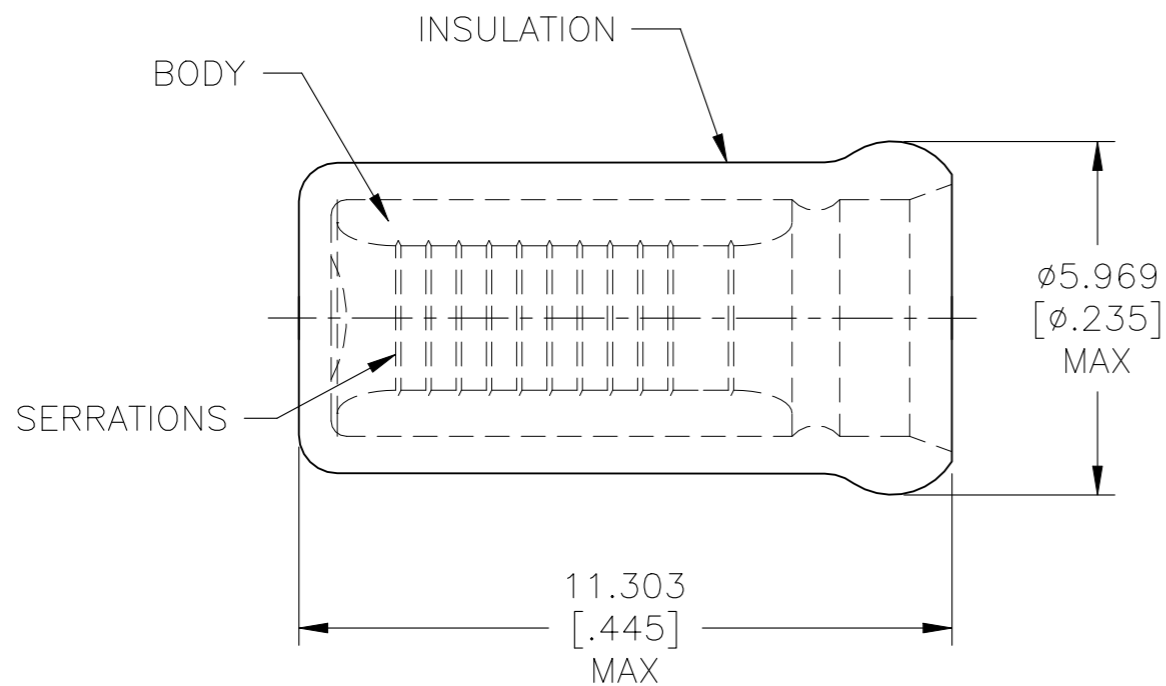

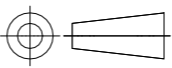


REVISIONS					
P	LTR	DESCRIPTION	DATE	DWN	APVD
	H4	REVISED PER ECN-22-156403	03JUN2022	RK	CSD



- 1 USE FOR STRIPPED (SINGLE) WIRE END ONLY.
- 2 WIRE INSUL, ø3.785[ø.149] MAX.

-	2500	ON TAPE, REEL	2-328308-1
MS25274/3 CLASS 1	1000	LOOSE PIECE	328308
MILITARY P/N & CLASS	QTY	PACKAGE TYPE	PART NO

AMP INCORPORATED CUSTOMER SERVICE SYSTEM		MAX RECOMMENDED OPERATING TEMPERATURE: 105°C[221°F]	THIS DRAWING IS A CONTROLLED DOCUMENT.		DWN L OLMEDA 21MAR96	 TE Connectivity NAME SPARE WIRE CAP, WIRE SIZE, 16-14 AWG				
FOR ADDITIONAL PRODUCT INFORMATION OR COPIES OF DRAWINGS AND TECHNICAL DOCUMENTS	PRODUCT INFORMATION CENTER 1-800-522-6752		VOLTAGE RATING: -	DIMENSIONS: mm [INCHES]	TOLERANCES UNLESS OTHERWISE SPECIFIED:					CHK M ELLIS 21MAR96
FOR APPLICATION TOOLING INFORMATION	TOOLING ASSISTANCE CENTER 1-800-722-1111	CIRCULAR MIL AREA: 1.04mm <sup>2</sup> -2.62mm <sup>2</sup> [2,050-5,180]		0 PLC ± -	APVD K FERREK 21MAR96	PRODUCT SPEC	SIZE	CAGE CODE	DRAWING NO	RESTRICTED TO
FOR ORDER ENTRY	1-800-526-5142			MATERIAL BODY, CU PER ASTM B152 INSUL, NYLON, COLOR, BLUE	1 PLC ± -	2 PLC ± -	APPLICATION SPEC	WEIGHT	A3	00779
					FINISH BODY, TIN PLATE PER ASTM B545	CUSTOMER DRAWING		SCALE 8:1	SHEET 1 OF 1	REV H4