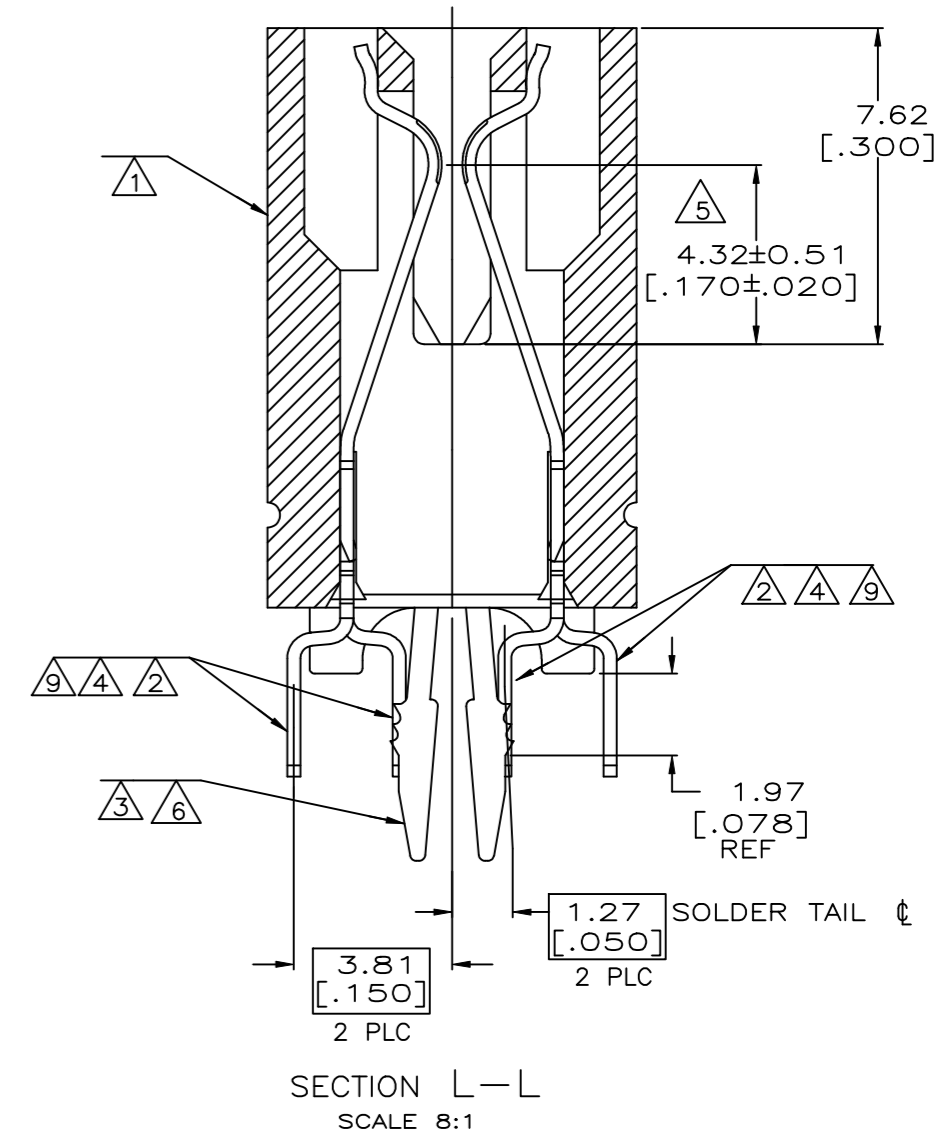
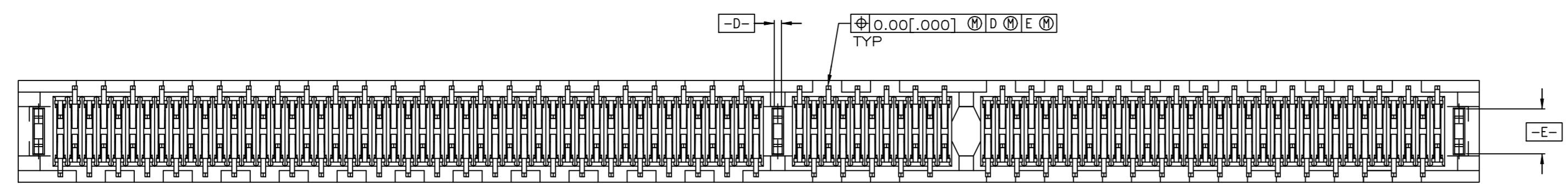
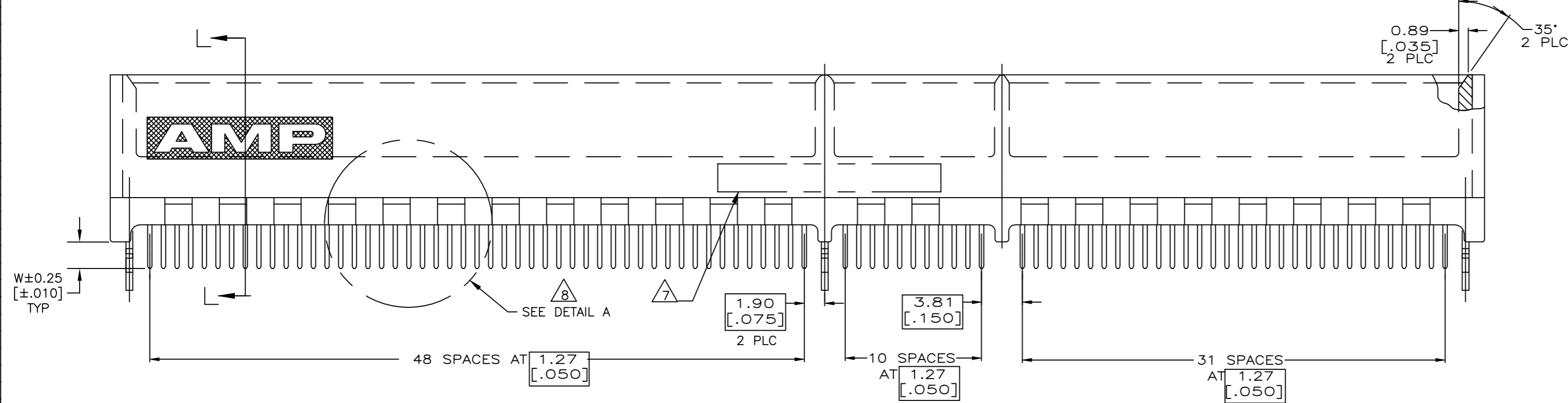
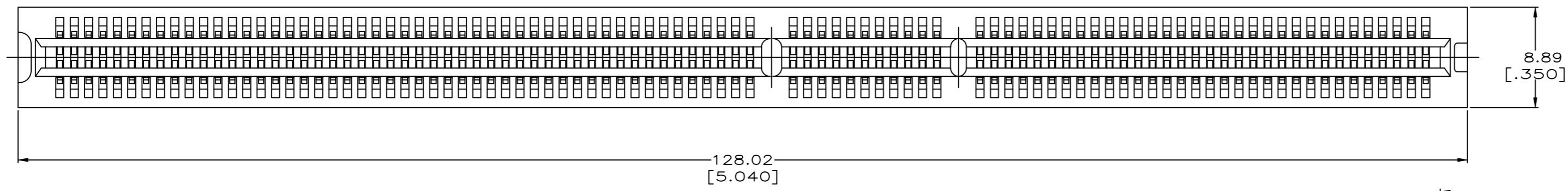


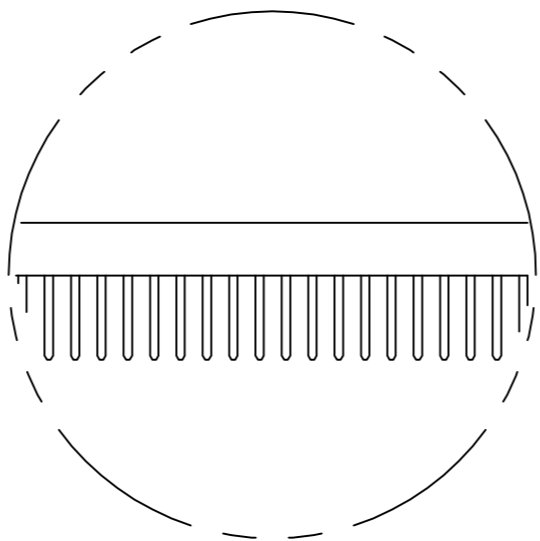
THIS DRAWING IS UNPUBLISHED. RELEASED FOR PUBLICATION
 BY TYCO ELECTRONICS CORPORATION. ALL RIGHTS RESERVED.

| LOC | | DIST | | REVISIONS | | | |
|-----|----|------|-----|---------------|-----------|-----|------|
| GP | 00 | P | LTR | DESCRIPTION | DATE | DWN | APVD |
| | | D | | ECO-18-017215 | 03DEC2018 | FL | HL |



SEE SHEET 2 FOR HOLE PATTERN

- ① HOUSING: HIGH TEMPERATURE THERMOPLASTIC. COLOR - NATURAL
- ② CONTACT: PHOSPHOR BRONZE.
- ③ METAL HOLD DOWN: BRASS
- ④ CONTACT FINISH: .001269[.000050] MIN NICKEL ALL OVER. .000757[.000030] GOLD OVER NICKEL IN CONTACT AREA. .002537[.000100] MIN TIN OVER NICKEL ON SOLDER TAILS.
- ⑤ DISTANCE FROM CONTACT POINT TO BOTTOM OF CARD SLOT.
- ⑥ METAL HOLD DOWN FINISH: .001269[.000050] MIN NICKEL ALL OVER, .003809[.000150] MIN TIN ALL OVER.
- ⑦ AMP PART NUMBER, DATE CODE AND CSA LOGO MARKED IN APPROXIMATE LOCATION SHOWN.
- ⑧ CORED OR SOLID SIDE WALLS ARE AT DISCRETION OF AMP INCORPORATED.
- ⑨ CONTACT FINISH: .001269[.000050] MIN NICKEL ALL OVER. .000757[.000030] GOLD OVER NICKEL IN CONTACT AREA. .0000254[.000001] MIN GOLD FLASH OVER NICKEL ON SOLDER TAILS.



DETAIL A

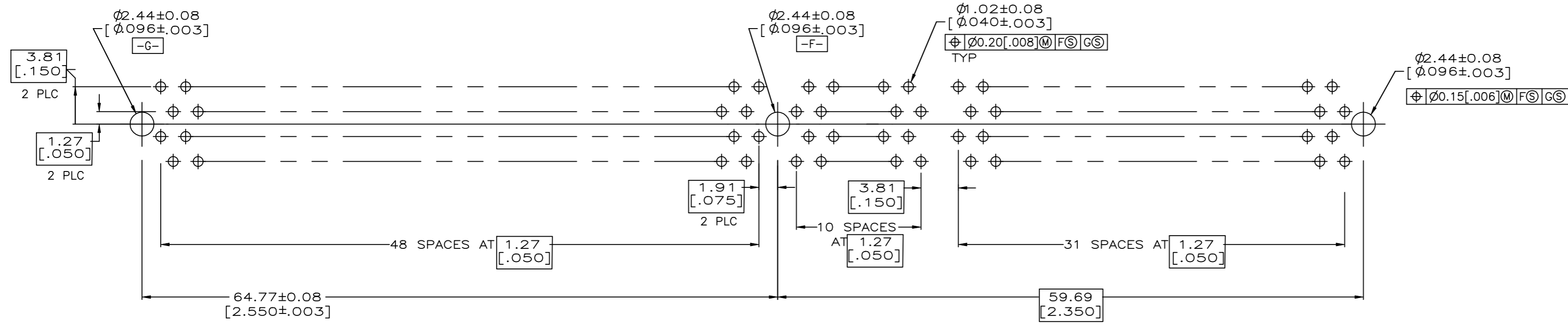
| | | |
|----------------|-------------|-----------|
| ⑨ | 3.18 [.125] | 1658305-2 |
| ④ | 3.18 [.125] | 1658305-1 |
| CONTACT FINISH | | NUMBER |
| | W | |

THIS DRAWING IS A CONTROLLED DOCUMENT.

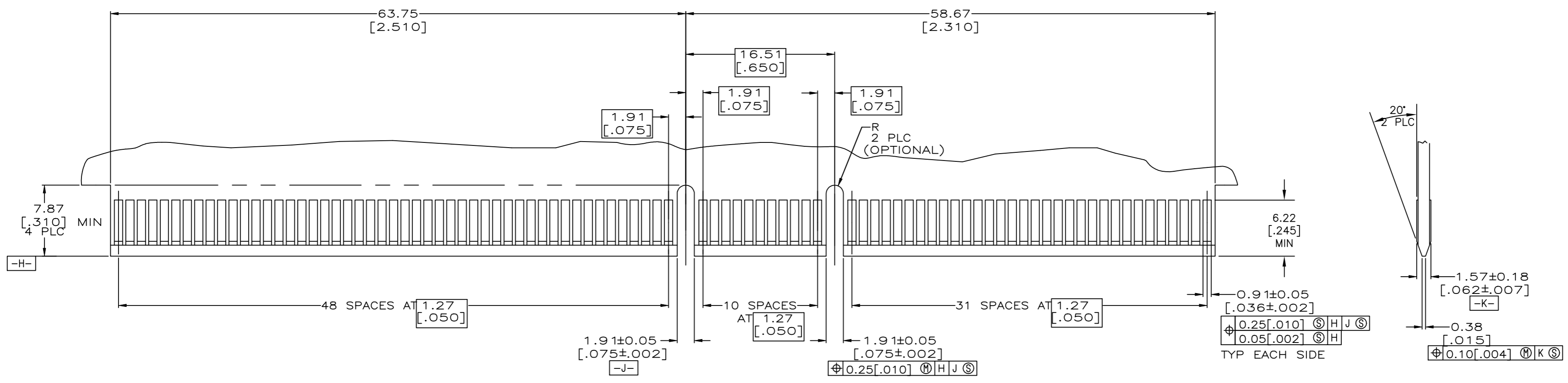
| | | | | | | | |
|--------------------|--|-------------------------|-----------------------------|------------|----------|------------------|--|
| DIMENSIONS: INCHES | TOLERANCES UNLESS OTHERWISE SPECIFIED: | DWN: D. FAROLE 02/03/03 | CRK: S. BURKHOLDER 02/04/03 | APVD: - | NAME: - | TYCO ELECTRONICS | Tyco Electronics Corporation Middletown, PA 17057 |
| 0 PLC ± - | 1 PLC ± - | PRODUCT SPEC: 108-14034 | APPLICATION SPEC: 114-26012 | WEIGHT: - | SIZE: A1 | CAGE CODE: 00779 | DRAWING NO: C=1658305 |
| 2 PLC ± .01 | 3 PLC ± .005 | RESTRICTED TO: - | | SCALE: 4:1 | | SHEET 1 OF 2 | |
| 4 PLC ± - | ANGLES FINISH: - | CUSTOMER DRAWING | | REV: D | | | |

THIS DRAWING IS UNPUBLISHED. RELEASED FOR PUBLICATION
 BY TYCO ELECTRONICS CORPORATION. ALL RIGHTS RESERVED.

| LOC | | DIST | | REVISIONS | | | |
|-----|----|------|-----|-------------|------|-----|------|
| GP | 00 | P | LWR | DESCRIPTION | DATE | OWN | APPD |
| | | - | - | SEE SHEET 1 | | | |



RECOMMENDED CONNECTOR MOUNTING HOLE PATTERN
(CONNECTOR SIDE SHOWN)



RECOMMENDED MATING BOARD EDGE CONFIGURATION

| THIS DRAWING IS A CONTROLLED DOCUMENT. | | OWN D. FAROLE 02/03/03 | Tyco Electronics Corporation Middletown, PA 17057 | CONNECTION ASSEMBLY, 92 DUAL POSITION, .050 SERIES, | | | | | | | | | | | | | | | |
|---|-----------------------|--|--|---|---------------------------|---------------|-------|-------|--------|-------|--------|-------|--------|--------|--------|-------------------------------|------------|--------------------|-----------------------|
| DIMENSIONS: INCHES | | CHK S. BURKHOLDER 02/04/03 | | APVD - | PRODUCT SPEC 108-14034 | RESTRICTED TO | | | | | | | | | | | | | |
| <table border="1"> <tr> <th colspan="2">TOLERANCES UNLESS OTHERWISE SPECIFIED:</th> </tr> <tr> <td>0 PLC</td> <td>± .01</td> </tr> <tr> <td>1 PLC</td> <td>± .01</td> </tr> <tr> <td>2 PLC</td> <td>± .005</td> </tr> <tr> <td>3 PLC</td> <td>± .005</td> </tr> <tr> <td>4 PLC</td> <td>± .005</td> </tr> <tr> <td>ANGLES</td> <td>± .005</td> </tr> </table> | | TOLERANCES UNLESS OTHERWISE SPECIFIED: | | 0 PLC | ± .01 | 1 PLC | ± .01 | 2 PLC | ± .005 | 3 PLC | ± .005 | 4 PLC | ± .005 | ANGLES | ± .005 | APPLICATION SPEC 114-26012 | SIZE A1 | CAGE CODE 00779 | DRAWING NO 1658305 |
| TOLERANCES UNLESS OTHERWISE SPECIFIED: | | | | | | | | | | | | | | | | | | | |
| 0 PLC | ± .01 | | | | | | | | | | | | | | | | | | |
| 1 PLC | ± .01 | | | | | | | | | | | | | | | | | | |
| 2 PLC | ± .005 | | | | | | | | | | | | | | | | | | |
| 3 PLC | ± .005 | | | | | | | | | | | | | | | | | | |
| 4 PLC | ± .005 | | | | | | | | | | | | | | | | | | |
| ANGLES | ± .005 | | | | | | | | | | | | | | | | | | |
| MATERIAL SEE SHEET 1 | FINISH SEE SHEET 1 | WEIGHT - | CUSTOMER DRAWING | SCALE 4:1 | SHEET 2 OF 2 | | | | | | | | | | | | | | |