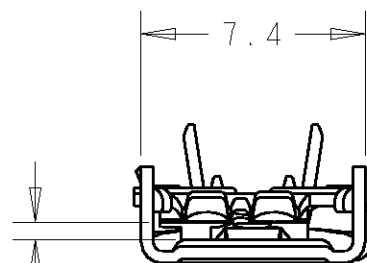
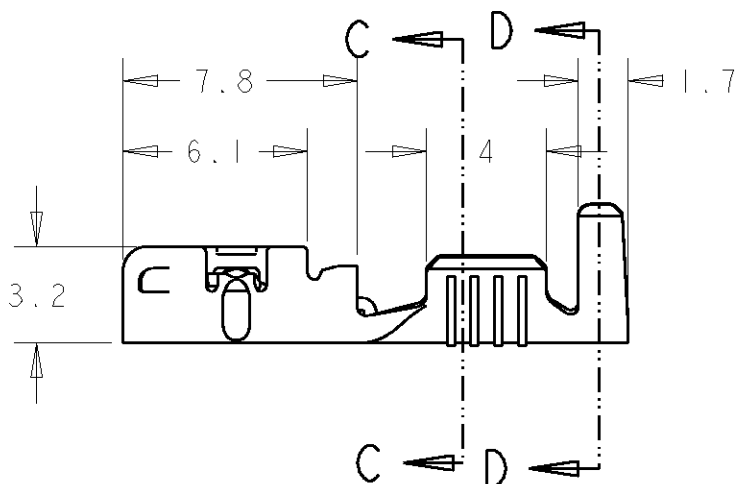
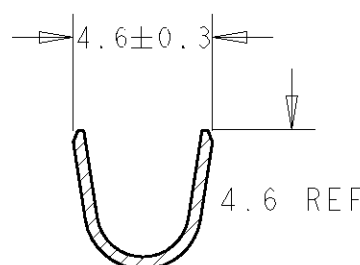
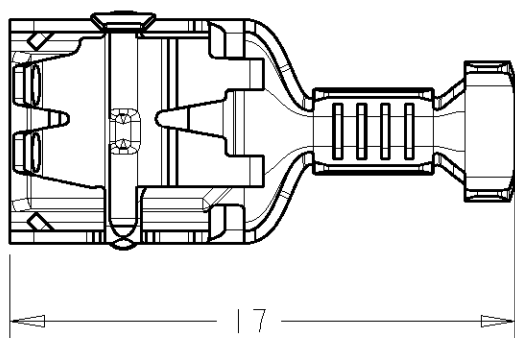


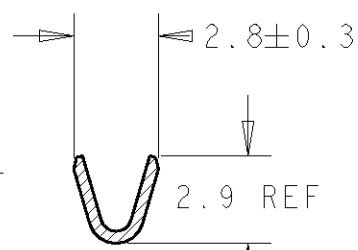
LOC	DIST	REVISIONS				
P	LTR	DESCRIPTION	DATE	DWN	APVD	
AL	2					
	F	See ECR 05-017875	JAN 2006	J.S.	J.L.	
	G	UPDATED TOLERANCE TABLE	FEB 2006	J.L.	J.L.	



Para lengüeta de 0.8 mm
For 0.8mm tab thickness

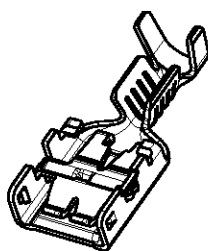


SECTION D-D
SCALE 4:1

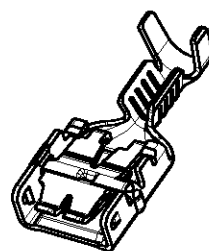


SECTION C-C
SCALE 4:1

Left-sided product



Right-sided product



336074-3	Latón Brass	Preestañado Pre-Tin
336074-1	Latón Brass	-
Guion Dash	Material	Acabado Finish

Rango de hilo de 0,32 a 0,75 mm²
Wire range from 0.32 to 0.75 mm²

Diametro de aislante max 3,0 mm
Max. Insulation Diameter 3.0 mm

DIMENSIONS: mm	DWN J. Saló	22 Dec 04	MATERIAL	Table	FINISH	Table
	CHK J. Lázaro	22 Dec 04	Tyco Electronics AMP España, S.A. Barcelona, Spain.			
TOLERANCES UNLESS OTHERWISE SPECIFIED:	APVD	-				
0 PLC ±0.5	PRODUCT SPEC	108-22128	NAME E-SPRING CONTACT 6,35 Receptaculo 6.35 Receptacle E-SPRING CONTACT			
1 PLC ±0.5	APPLICATION SPEC	114-22017	SIZE	CAGE CODE	DRAWING NO	RESTRICTED TO
2 PLC ±	WEIGHT	-	A4	00779	C=336074	-
3 PLC ±	CUSTOMER DRAWING		SCALE	4:1	SHEET	1 OF 1
4 PLC ±						REV G
ANGLES ±						