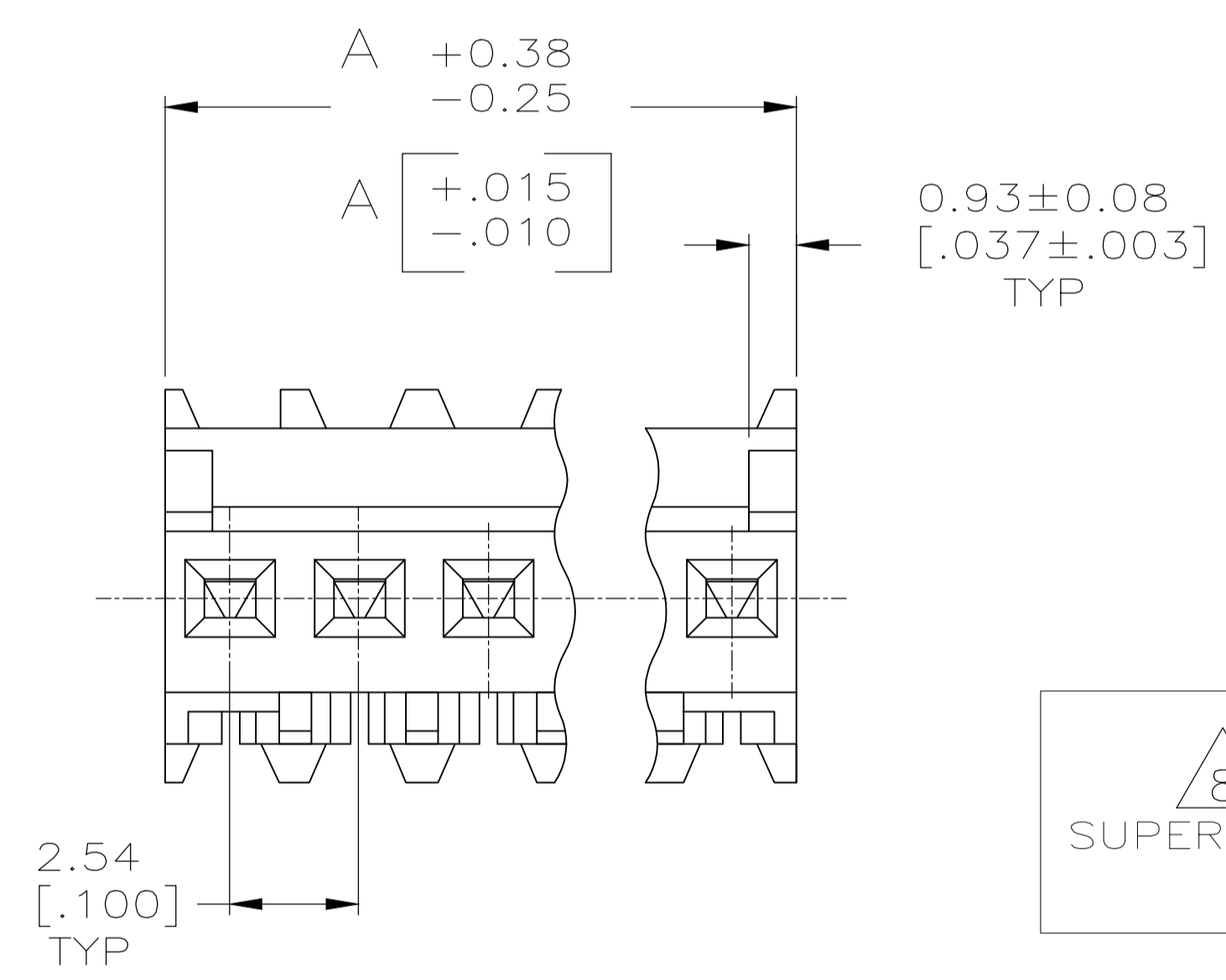
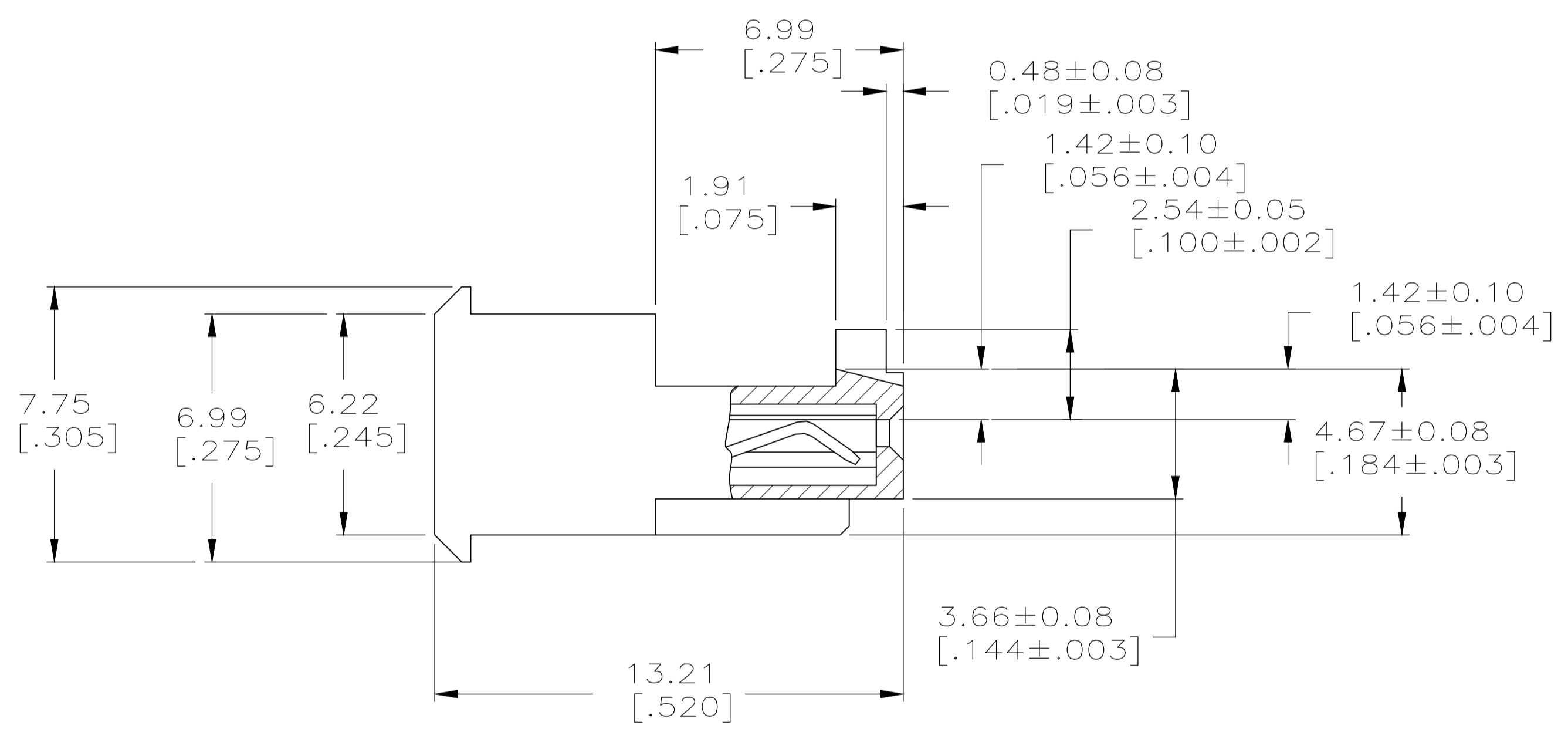
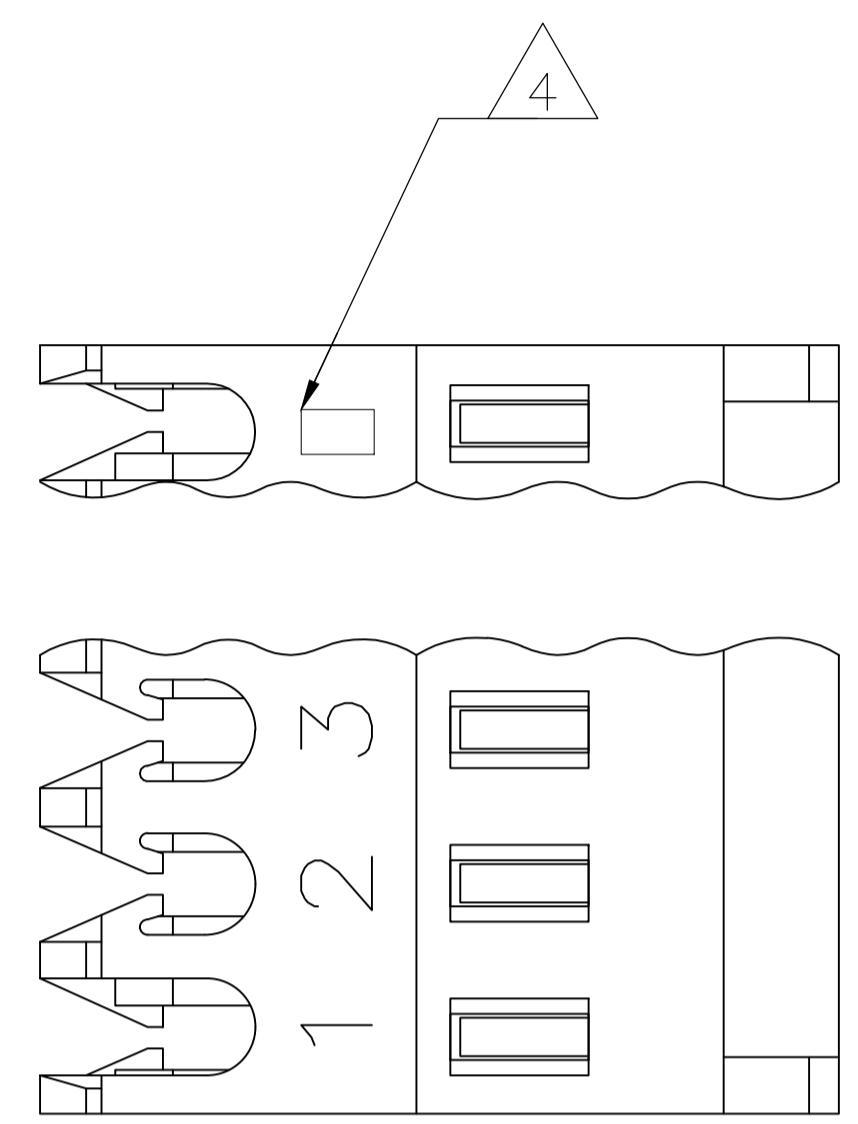


- 1 MATERIAL: CONNECTOR - NYLON UL94V-2 (RED).
 CONTACTS - 0.30[.012] THICK COPPER ALLOY
 0.00076[.000030] GOLD OR 0.00076[.000030]
 TOTAL GOLD FLASH OVER PALLADIUM NICKEL,
 PER TE CONNECTIVITY'S DISCRETION, IN CONTACT AREA
 WITH MATTE TIN SLOT AREA FOR 644702-2
 THRU1-644702-6
 OR MATTE WHISKER MITIGATED TIN FOR 3-644702-2
- 2 THRU 4-644702-6 OVER NICKEL UNDERPLATE.
- 3 CONTACTS ACCEPT 22 AWG WIRE WITH 1.52 [.060] MAX
 INSULATION DIAMETER.
- 4 CONTACTS MUST ACCEPT 0.64±0.03 [.025±.001] SQUARE POST
 AND REMAIN LOCKED IN POSITION.
- 5 IDENTIFICATION NUMBER FOR LAST CIRCUIT MAY NOT APPEAR ON ALL
 ASSEMBLIES.
- 6 DIMENSIONS IN BRACKETS ARE IN INCHES.
- 7 HOUSING FEATURES ARE: FEED THRU WITH LOCKING RAMP AND
 POLARIZING TAB.
- 8 OBSOLETE PARTS: OBSOLETE CIS STREAMLINING PER
 D.RENAUD/D.SINISI



TIN	40.64	[1.600]	16	4-644702-6	
TIN	38.10	[1.500]	15	4-644702-5	
TIN	35.56	[1.400]	14	4-644702-4	
TIN	33.02	[1.300]	13	4-644702-3	
TIN	30.48	[1.200]	12	4-644702-2	
TIN	27.94	[1.100]	11	4-644702-1	
TIN	25.40	[1.000]	10	4-644702-0	
TIN	22.86	[.900]	9	3-644702-9	
TIN	20.32	[.800]	8	3-644702-8	
TIN	17.78	[.700]	7	3-644702-7	
TIN	15.24	[.600]	6	3-644702-6	
TIN	12.70	[.500]	5	3-644702-5	
TIN	10.16	[.400]	4	3-644702-4	
TIN	7.62	[.300]	3	3-644702-3	
TIN	5.08	[.200]	2	3-644702-2	
SUPERSEDED	TIN-LEAD	40.64	[1.600]	16	1-644702-6
SUPERSEDED	TIN-LEAD	38.10	[1.500]	15	1-644702-5
SUPERSEDED	TIN-LEAD	35.56	[1.400]	14	1-644702-4
SUPERSEDED	TIN-LEAD	33.02	[1.300]	13	1-644702-3
SUPERSEDED	TIN-LEAD	30.48	[1.200]	12	1-644702-2
SUPERSEDED	TIN-LEAD	27.94	[1.100]	11	1-644702-1
SUPERSEDED	TIN-LEAD	25.40	[1.000]	10	1-644702-0
SUPERSEDED	TIN-LEAD	22.86	[.900]	9	644702-9
SUPERSEDED	TIN-LEAD	20.32	[.800]	8	644702-8
SUPERSEDED	TIN-LEAD	17.78	[.700]	7	644702-7
SUPERSEDED	TIN-LEAD	15.24	[.600]	6	644702-6
SUPERSEDED	TIN-LEAD	12.70	[.500]	5	644702-5
SUPERSEDED	TIN-LEAD	10.16	[.400]	4	644702-4
SUPERSEDED	TIN-LEAD	7.62	[.300]	3	644702-3
SUPERSEDED	TIN-LEAD	5.08	[.200]	2	644702-2
FINISH	DIM A	NO.OF POSN	ASSEMBLY		

THIS DRAWING IS A CONTROLLED DOCUMENT.		DIN S. HOOVER 28-DEC-2004		TE Connectivity	
DIMENSIONS: mm [INCHES]		TOLERANCES UNLESS OTHERWISE SPECIFIED:			
0 PLC ± 1 PLC ± 2 PLC ± 3 PLC ± 0.13 [.005] 4 PLC ± ANGLES ±		CDR: D. ROSSI 28-DEC-2004 APVD: D. ROSSI 28-DEC-2004 PRODUCT SPEC: 108-1050 APPLICATION SPEC: 114-1019		NAME: MTA .100 CONNECTOR ASSEMBLY, 22 AWG, STANDARD	
MATERIAL		FINISH		SIZE: A1 CAGE CODE: 00779 DRAWING NO: 644702 WEIGHT: CUSTOMER DRAWING	
4805 (3/11)		SCALE: 8:1		SHEET 1 OF 1 REV N	