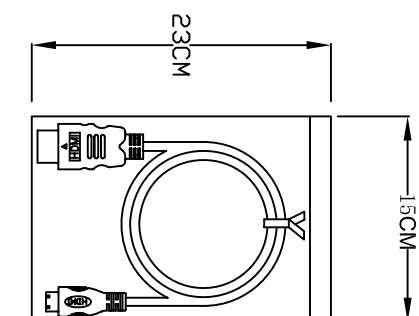
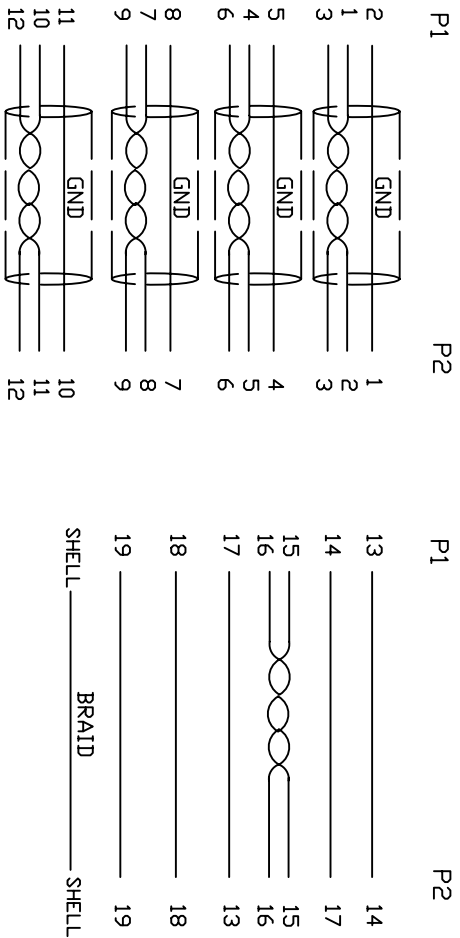


1. Wiring Diagram.



2. Cable test condition :

Open / Short : 100%

Insulation resistance : 5M ohms

Contact resistance : 2 ohm

Hipot : DC 300V / 1 sec

3. Each pcs with PE polybag.

7	COPPER	W25MM*H45MM	1		
6	COPPER	W20MM*H35MM	1		
5	PVC	45P PVC BLACK OVERMOLD	25g		
4	PE	LLDPE 500026 6201 INSIDE MOLDING	16g		
3	CONN	HDMI C TYPE MALE PIN G/F ,SHELL PLATED NICKEL, INSULATION BLACK	1	P2	
2	CONN	HDMI A TYPE MALE PIN G/F ,SHELL PLATED NICKEL, INSULATION BLACK	1	P1	
1	CABLE	UL20276 《30AWG (7/0.1TS) *1P+EA+AL/MY》 *4+30AWG (7/0.1TS) *3C +AEM(16/6/0.12AM) OD6.0 BLACK	1	2000mm	
NO.	PART NO.	DESCRIPTION	QTY	UNIT/REF	

BILL OF MATERIAL

Cnc Tech, LLC

HDMI A/M TO HDMI C/M CABLE

DWN NO. 742-10010-00200

INITIAL RELEASE

DATE 2017/7/26

REVISION#

DESCRIPTION

DRAWN EDWIN LAI

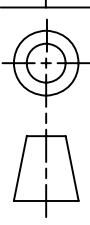
CUSTOMER P/N:

CHECKED Winc

CUSTOMER:

DATE 07/26/17

DATE



SHEET 1 OF 1