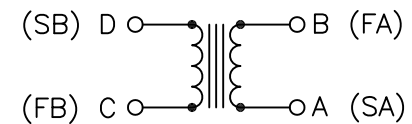
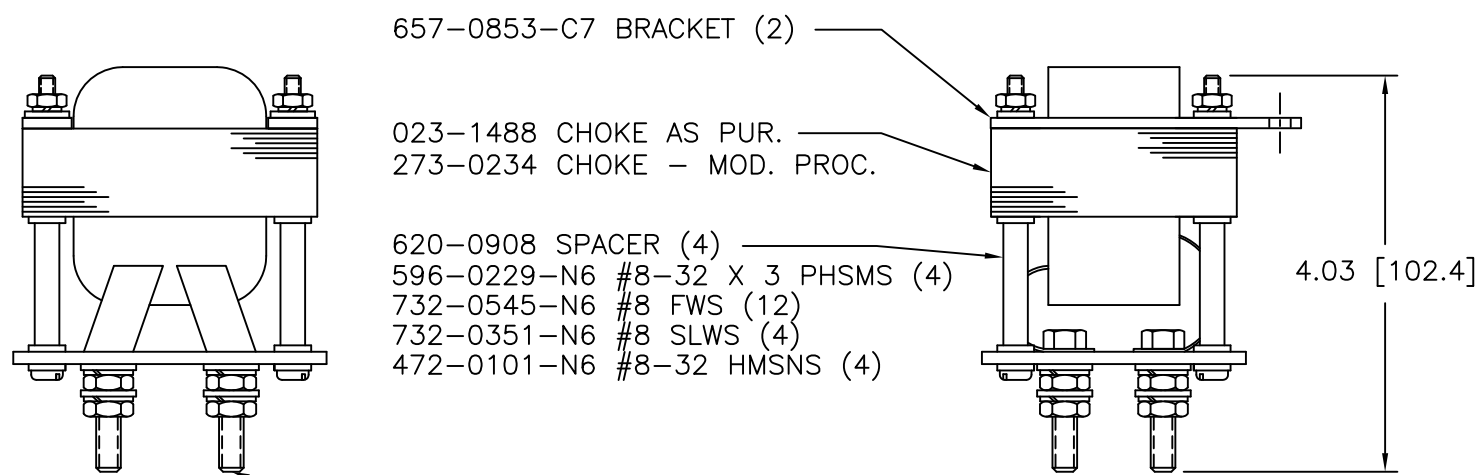
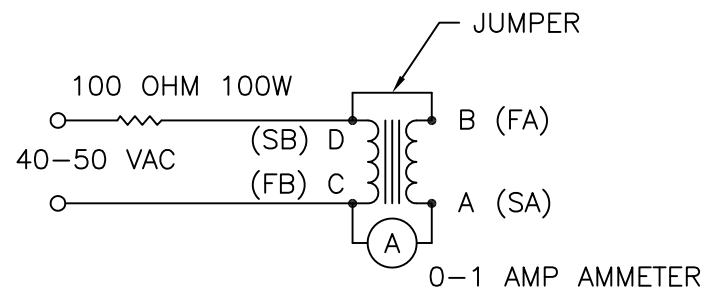
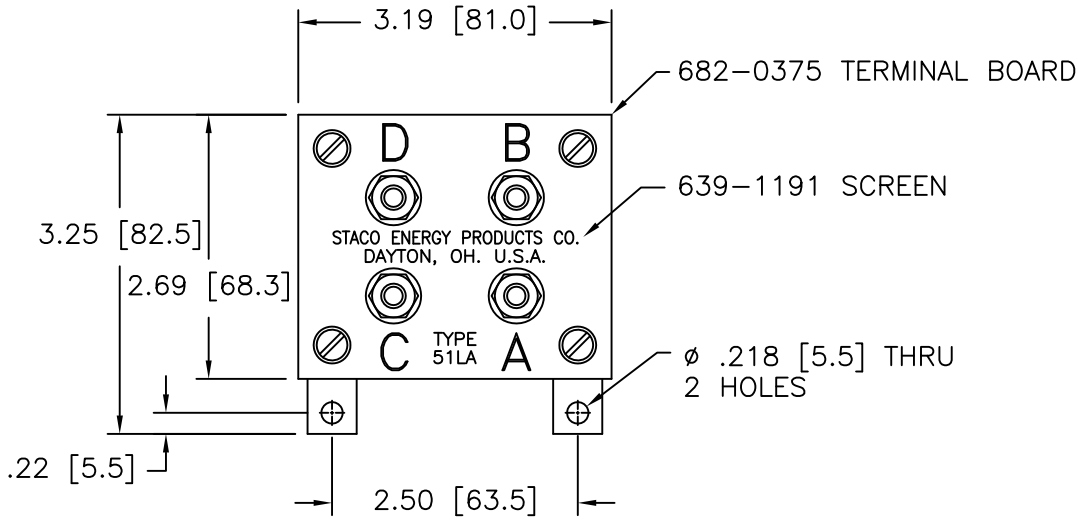


DWG. NO.	850-0178		
DWG. SIZE	C		
REVISIONS			
SYL.	E.C.N.	DATE	APVD.
R	24803	4/10/02	REDRAWN TO CAD
S	24950	9/12/02	REVISED & UPDATED




SCHEMATIC



TEST CIRCUIT

READ APPROX. 0.2 AMPERES BETWEEN "C" AND "A" IF THE START AND FINISH OF EITHER WINDING IS REVERSED THE AMMETER WILL READ ZERO

**NOTE:**  
THE UNIT SHALL WITHSTAND A 1500 V ±5% 60HZ. APPLICATION FROM EACH WINDING TO THE CORE AND BETWEEN WINDINGS WITHOUT EVIDENCE OF FLASHOVER OR BREAKDOWN

UNLESS OTHERWISE SPECIFIED, TOLERANCE IS ±		UNITS		TITLE:				
DECIMALS	HOLES	ANGLES	DRAFT	SPEC. CONTROL DRAWING				
.XX	.0002	1°	1-1/2°	CHOKE		A Components Corporation of America Company 302 Gaddis Boulevard Dayton, Ohio 45402 USA		
.00X .005				TYPE: 51LA				
MATERIAL:				ALL DIMENSIONS APPLY AFTER PLATING	DRAWN BY	DATE	FIRST USED ON	DO NOT SCALE DWG.
The information and design disclosed herein was originated by and is the property of STACO ENERGY PRODUCTS CO., which reserves all patent, proprietary, design, manufacturing, reproduction, use and sole rights thereto, and to any article disclosed therein except to the extent rights are expressly granted to others. The foregoing does not apply to vendor proprietary parts.					TIM RAU	4/10/02		
					CHECKER	DATE	WEIGHT APPROX.	CAGE CODE
								83008
					ENGINEER	DATE	SCALE	DWG. SIZE
							1=1	C
							SHEET 1 OF 1	DWG. NO.
								850-0178