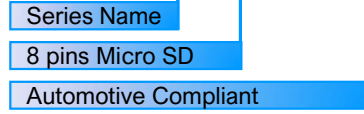


**SPECIFICATIONS:**

Insulation Resistance: 1,000MΩ min. at 500V DC  
 Withstanding Voltage: 500Vrms for 1min  
 Voltage Rating: 5Vrms DC  
 Current Rating: 0.5A  
 Contact Resistance: 100mΩ max. at 20mV max.  
 Operating Temp.: - 25°C ~ +85°C  
 Mating Cycle: 5,000 times

**PART NUMBER:**

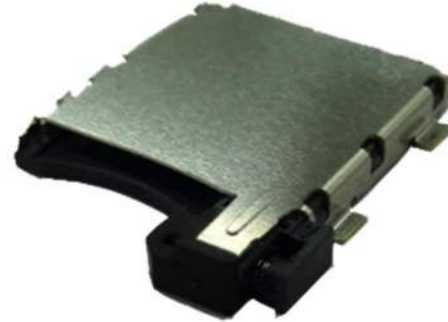
**PJS008-4100-0-VE**



**MATERIALS AND FINISH:**

- Contacts: Ni-Au Alloy
- Metal Shell: Ni-Au Alloy
- Insulator: LCP

**AUTOMOTIVE COMPLIANT**



**FEATURES:**

- Automotive Grade Performance
- High impact and vibration resistance
- One-action Push-Lock latch prevents SIM card ejection during vehicular operation
- RoHS and REACH Compliant

**OUTLINE DIMENSIONS:**

