

TABLE 1 : UNITIZED CONNECTOR WITH HOLD DOWN MODULE

PART NUMBER	NUMBER OF POWER MODULES	*DIM A*	PLATING OPTION	HOLD DOWN MODULE LOCATION
78229-100*	1X	10.90	TIN	LEFT (REFER TO SHEET 2 FOR DETAILS)
78229-10**	2X	18.30		RIGHT (REFER TO SHEET 3 FOR DETAILS)
78229-200*	1X	10.90		
78229-20**	2X	18.30		

PART NUMBER LEGEND: 78229-*0**

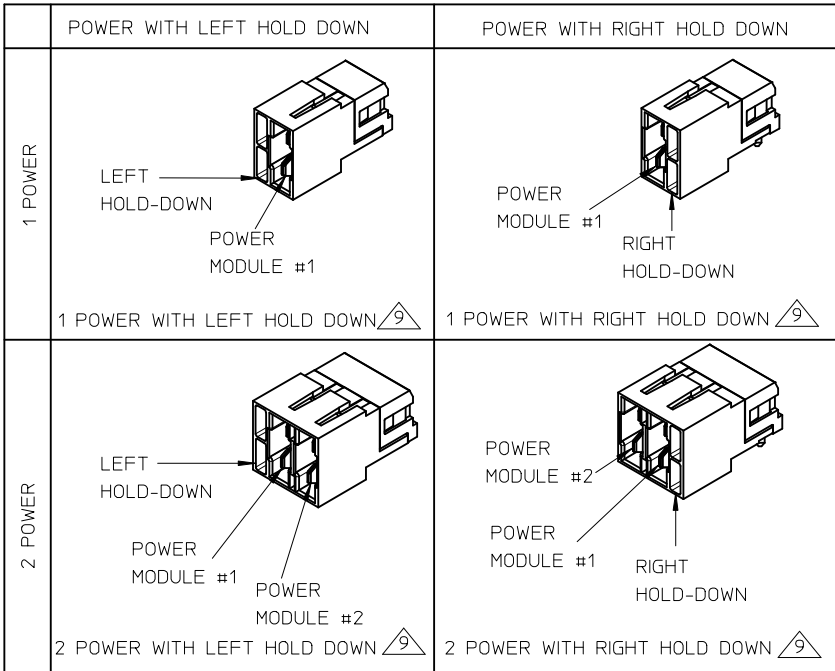
PLATING OPTION	HOLD DOWN MODULE LOCATION	*	POWER MODULE 2		POWER MODULE 1				
			BLADE LENGTH		BLADE LENGTH				
TIN	LEFT	1	P1	P2	1	8.27			
			MODULE NOT PRESENT				2	8.27	9.77
			0	8.27					
RIGHT		2	0	8.27	9.77				
			3	6.77	9.77				

NOTES

- MATERIALS :
HOUSING - HIGH TEMP. THERMOPLASTIC, GLASS FILLED, UL94-V0,COLOR:BLACK.
POWER PIN - COPPER ALLOY
- FINISHES :
POWER CONTACTS
0.76µm MINIMUM GOLD AT CONTACT AREA AND
2.54µm MINIMUM TIN AT SOLDER TAIL AREA OVER
1.27µm MINIMUM NICKEL UNDERPLATE.
- PRODUCT SPECIFICATION: PS-78231-006.
- COMPONENT STAY AWAY ZONE FROM CONNECTOR.
- PCB NOTE FOR PLATED HOLE.

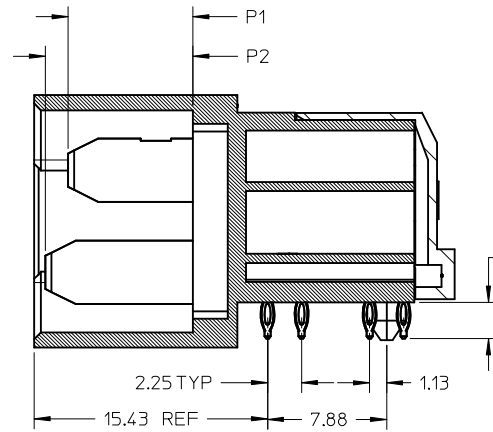
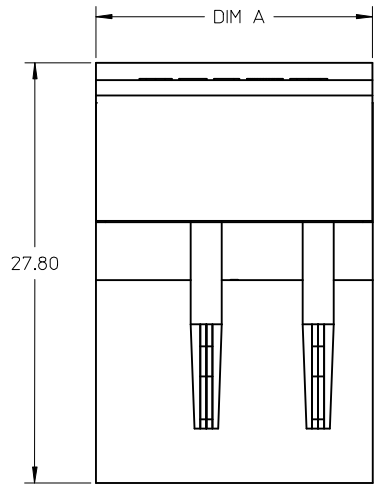
TYPE OF PLATED HOLE	DRILLED HOLE SIZE	PLATING THICKNESS	PLATED HOLE SIZE *ØDIM H*
TIN/TIN-LEAD	0.838	0.007 MIN TIN/TIN-LEAD/SILVER	0.725±0.075
SILVER	0.863	OVER 0.03 TO 0.08 COPPER PLATING	0.750±0.050

- MATES WITH 78227-1*** and 78230-****.
- PART NUMBER AND YEAR-DAY CODE CAN BE ON EITHER SIDE OF WALL.
- ADD 7.40mm FOR EACH ADDITIONAL MODULE.
- THE DETAILS FOR LEFT HOLD DOWN OPTION SHOWN ON SHEET 2 AND RIGHT HOLD DOWN OPTION SHOWN ON SHEET 3.
- CONNECTORS ARE PACKED IN A TRAY.
- MODULE LOCATION IS FROM NEXT TO HOLD DOWN MODULE WITH STARTING MODULE AS *#1*.
- BOTTOM AND TOP CIRCUITS ARE INDICATED AS *CKT A* AND *CKT B*.
- ALL PARTS ARE SHIPPED WITH A 2-32 TYPE AB SELF-TAPPING SCREW PART NUMBER 73726-0005.
- PACKAGING PROCEDURE AS PER PK-78229-001.

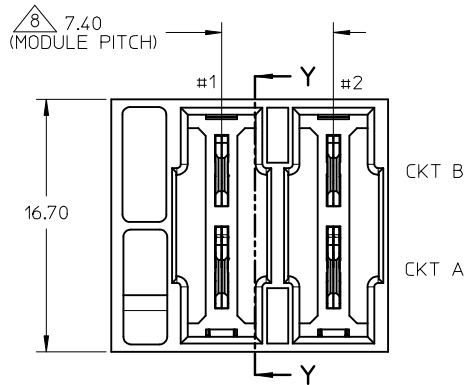
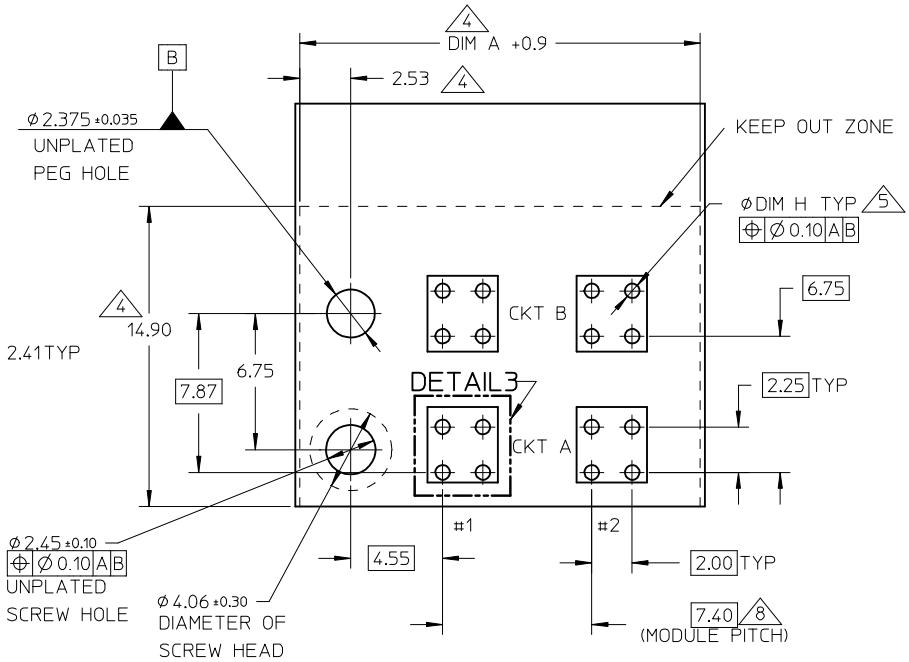


INITIAL RELEASE EC NO: S2012-0455 DRWN: SHONG CHKD: LNG APPR: NAGESHKIN 2011/12/02 2011/12/27 2012/01/17	DESCRIPTION QUALITY SYMBOLS ▽=0 ◻=0	GENERAL TOLERANCES (UNLESS SPECIFIED)		DIMENSION STYLE MM ONLY		SCALE NTS	DESIGN UNITS METRIC	THIRD ANGLE PROJECTION																
		<table border="1"> <thead> <tr> <th></th> <th>mm</th> <th>INCH</th> </tr> </thead> <tbody> <tr> <td>4 PLACES</td> <td>± ---</td> <td>± ---</td> </tr> <tr> <td>3 PLACES</td> <td>± ---</td> <td>± ---</td> </tr> <tr> <td>2 PLACES</td> <td>± 0.25</td> <td>± ---</td> </tr> <tr> <td>1 PLACE</td> <td>± ---</td> <td>± ---</td> </tr> </tbody> </table>			mm	INCH	4 PLACES	± ---	± ---	3 PLACES	± ---	± ---	2 PLACES	± 0.25	± ---	1 PLACE	± ---	± ---	DRAWN BY LKCHEW		DATE 2011/11/04	TITLE I-TRAC POWER ,7 ROW HEADER WITH HOLD DOWN PRESS FIT, R/A		
			mm	INCH																				
		4 PLACES	± ---	± ---																				
3 PLACES	± ---	± ---																						
2 PLACES	± 0.25	± ---																						
1 PLACE	± ---	± ---																						
CHECKED BY LNG		APPROVED BY SHONG		DATE 2011/11/29	MOLEX INCORPORATED																			
MATERIAL NO.		SEE TABLE		DOCUMENT NO. SD-78229-003		SHEET NO. 1 OF 3																		

LEFT HOLD DOWN OPTION

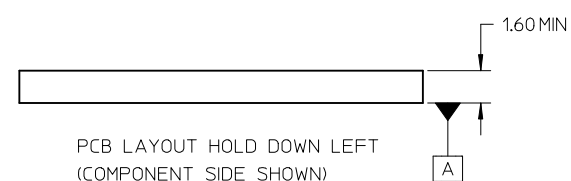
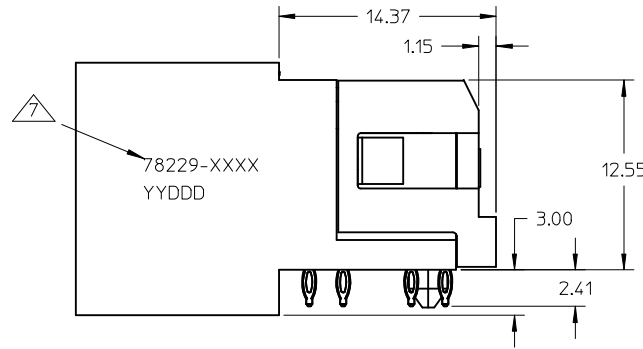


SECTION Y-Y



DETAIL 3

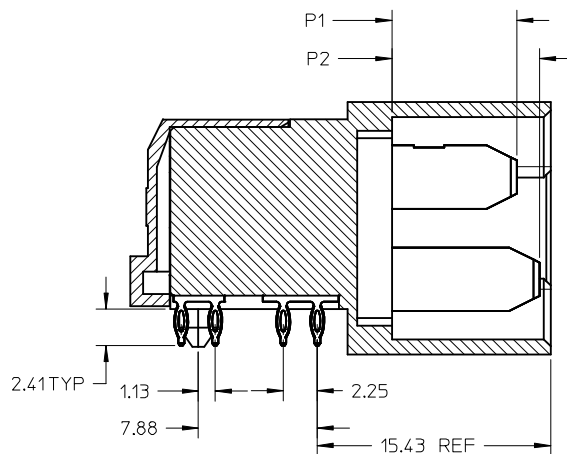
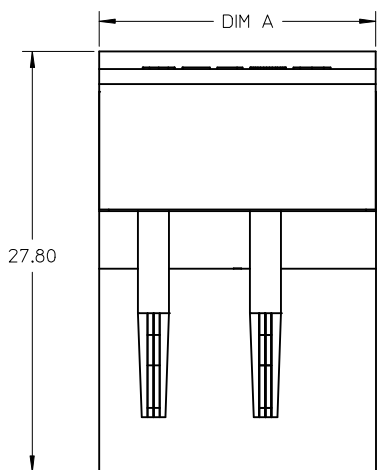
COPPER PAD REFERENCE



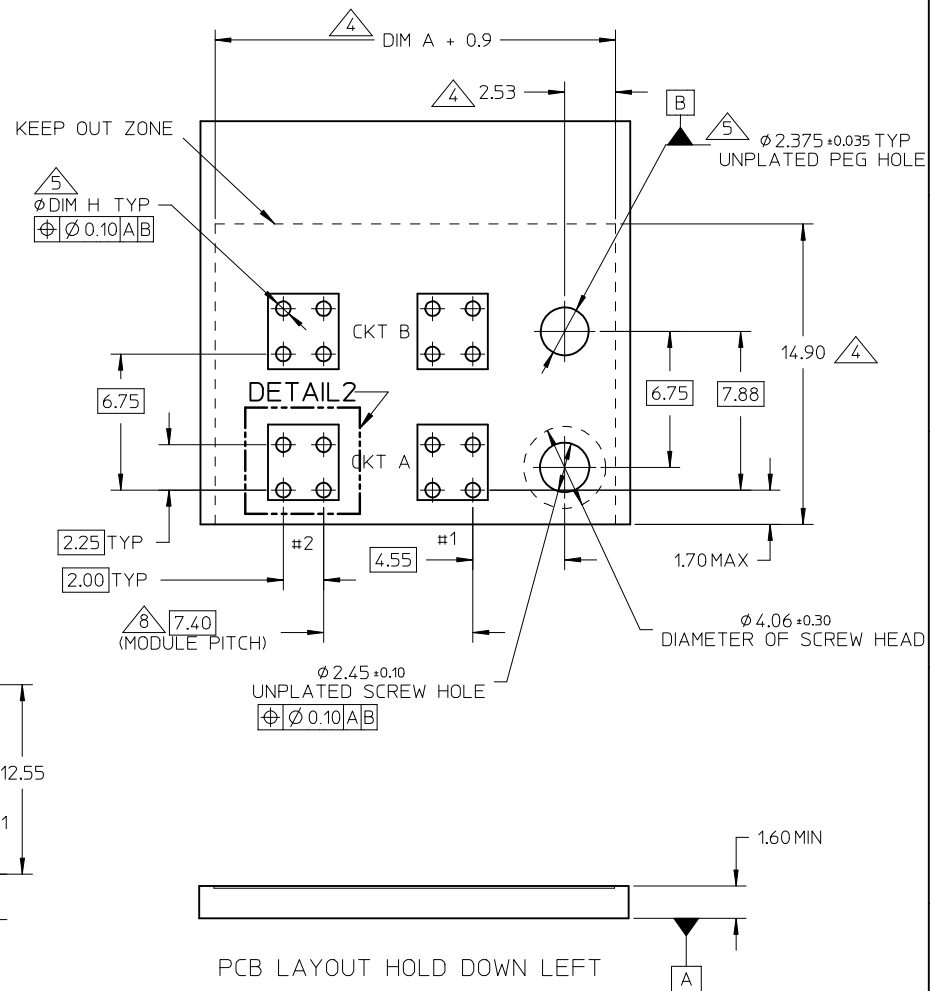
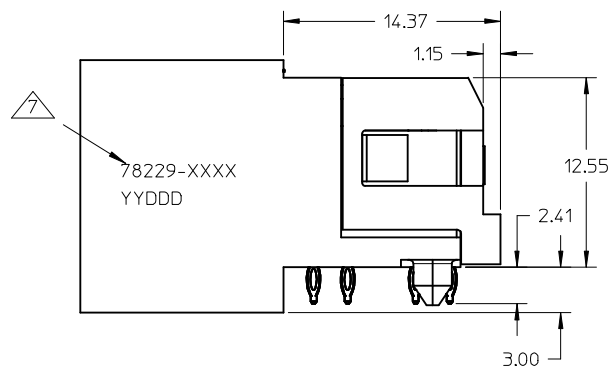
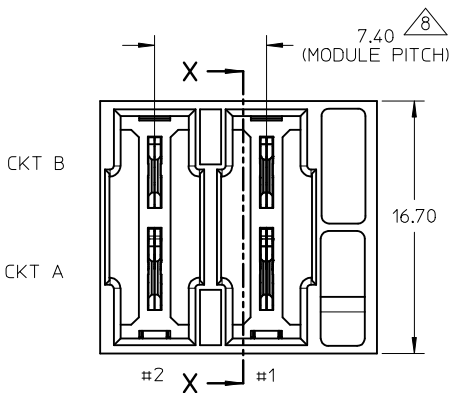
PCB LAYOUT HOLD DOWN LEFT
(COMPONENT SIDE SHOWN)

INITIAL RELEASE EC NO: S2012-0455 DRWN: SHONG CHKD: LNG APPR: NAGESHKN 2011/12/02 2011/12/27 2012/01/17	QUALITY SYMBOLS ▽=0 ◻=0	GENERAL TOLERANCES (UNLESS SPECIFIED)		DIMENSION STYLE MM ONLY	SCALE NTS	DESIGN UNITS METRIC	THIRD ANGLE PROJECTION		
		4 PLACES ± --- ± --- 3 PLACES ± --- ± --- 2 PLACES ± 0.25 ± --- 1 PLACE ± --- ± ---	mm INCH	DRAWN BY LKCHEW	DATE 2011/11/04	TITLE I-TRAC POWER ,7 ROW HEADER WITH HOLD DOWN PRESS FIT, R/A			
		ANGULAR ± 3 °		CHECKED BY LNG	DATE 2011/11/29	MOLEX INCORPORATED			
		DRAFT WHERE APPLICABLE MUST REMAIN WITHIN DIMENSIONS		APPROVED BY SACHIN	DATE 2011/11/29	MATERIAL NO. SEE TABLE	DOCUMENT NO. SD-78229-003	SHEET NO. 2 OF 3	

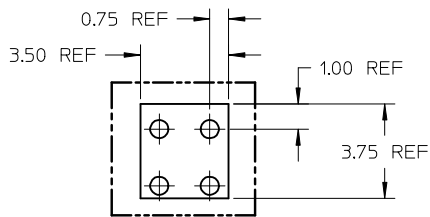
RIGHT HOLD DOWN OPTION



SECTION X-X



PCB LAYOUT HOLD DOWN LEFT
(COMPONENT SIDE SHOWN)



DETAIL2
COPPER PAD REFERENCE

INITIAL RELEASE EC NO: S2012-0455 DRWN: SHONG CHKD: LNG APPR: NAGESHKIN	2011/12/02	DESCRIPTION	QUALITY SYMBOLS
	2011/12/27		▽=0
2012/01/17		◻=0	

GENERAL TOLERANCES (UNLESS SPECIFIED)	mm	INCH	
	4 PLACES	± ---	± ---
	3 PLACES	± ---	± ---
	2 PLACES	± 0.25	± ---
	1 PLACE	± ---	± ---
ANGULAR ± 3 °			
DRAFT WHERE APPLICABLE MUST REMAIN WITHIN DIMENSIONS			

DIMENSION STYLE MM ONLY	
DRAWN BY LKCHEW	DATE 2011/11/04
CHECKED BY LNG	DATE
APPROVED BY NAGESHKIN	DATE 2011/11/29
MATERIAL NO. SEE TABLE	
SIZE A3	THIS DRAWING CONTAINS INFORMATION THAT IS PROPRIETARY TO MOLEX INCORPORATED AND SHOULD NOT BE USED WITHOUT WRITTEN PERMISSION

SCALE NTS	DESIGN UNITS METRIC	THIRD ANGLE PROJECTION
TITLE I-TRAC POWER ,7 ROW HEADER WITH HOLD DOWN PRESS FIT, R/A		
MOLEX INCORPORATED		
DOCUMENT NO. SD-78229-003	SHEET NO. 3 OF 3	