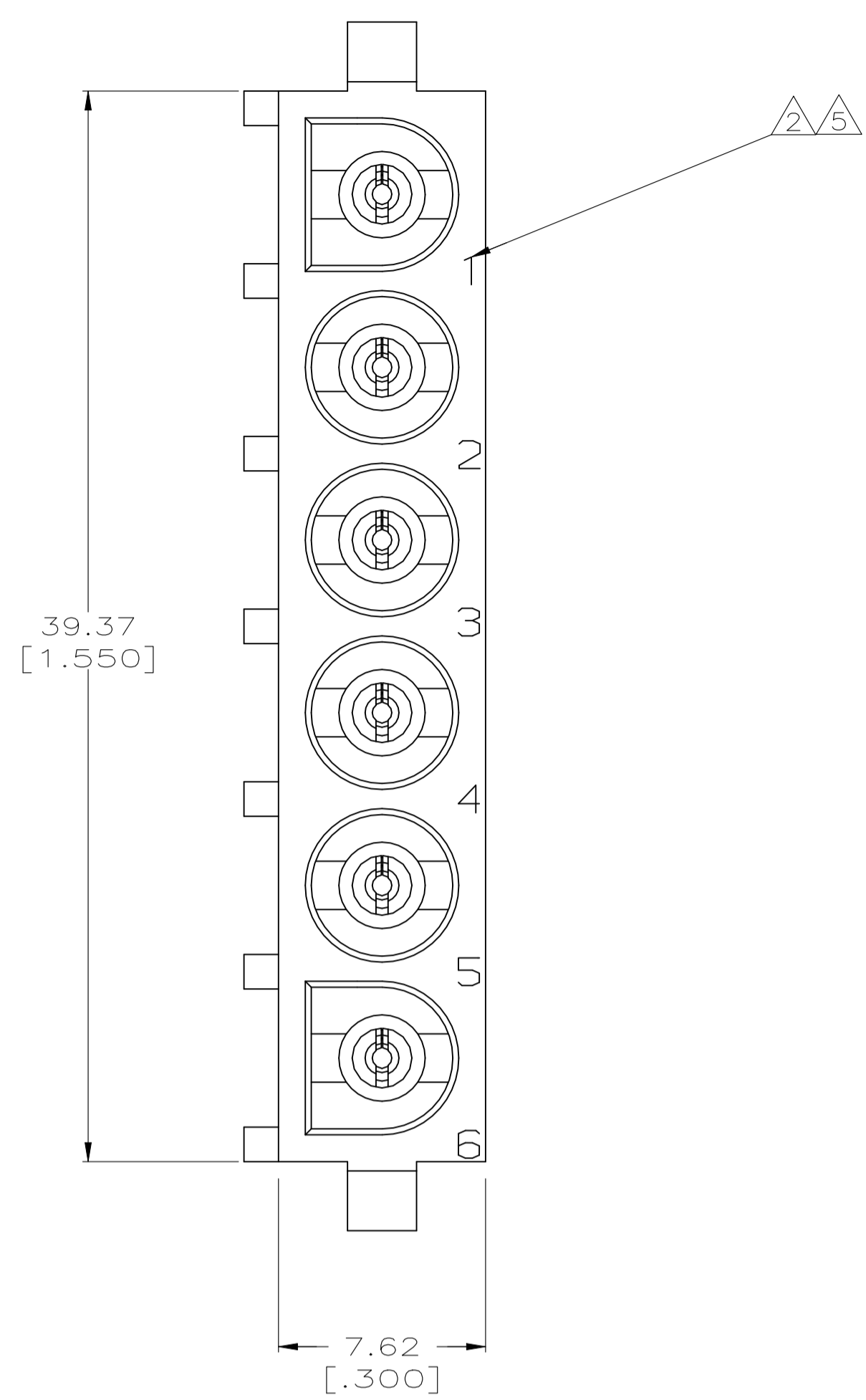
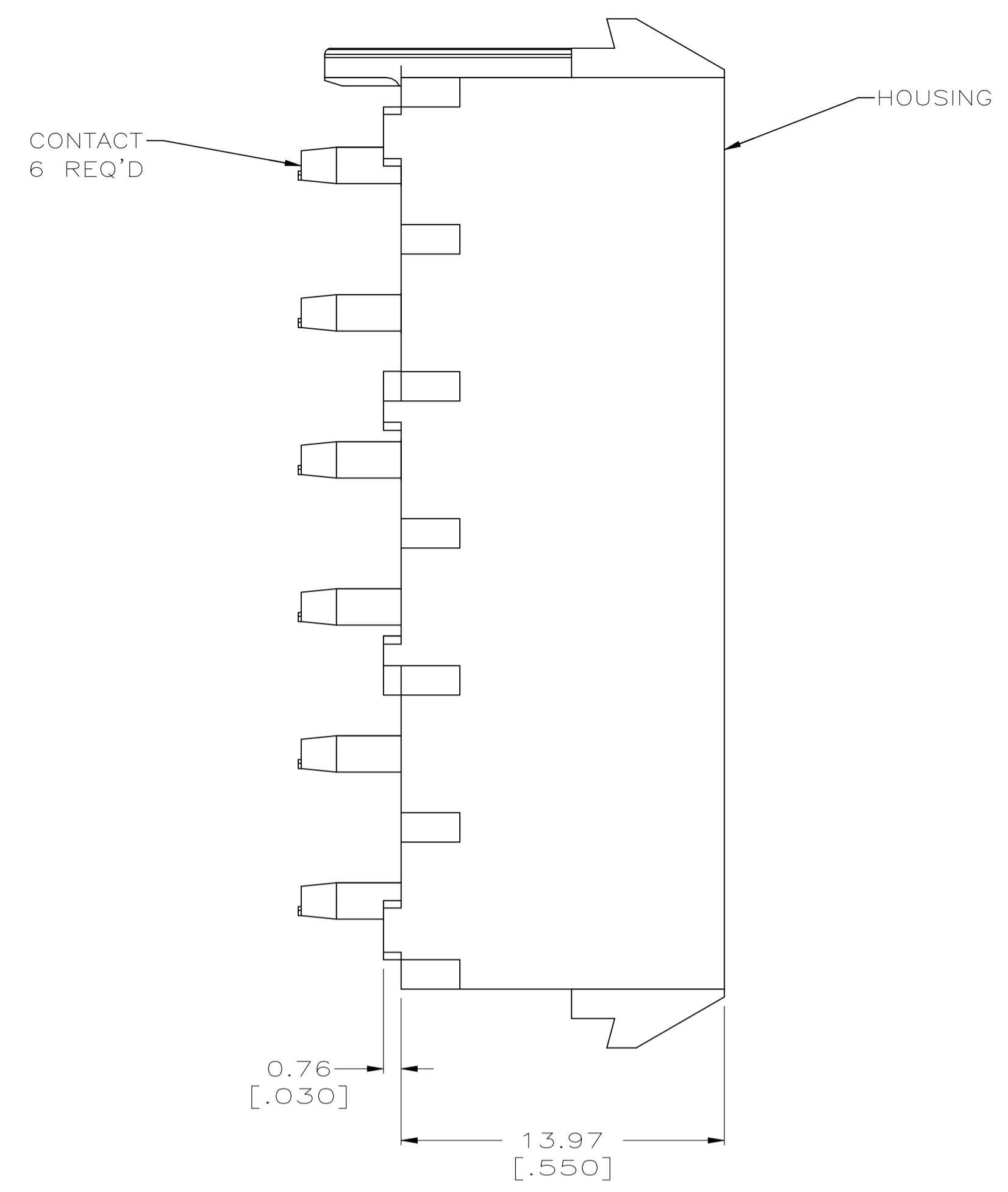
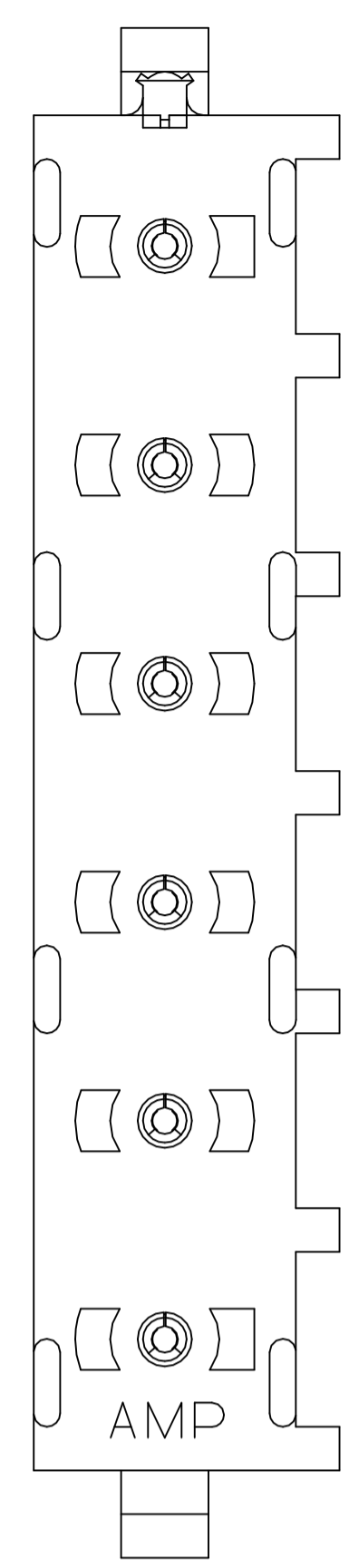
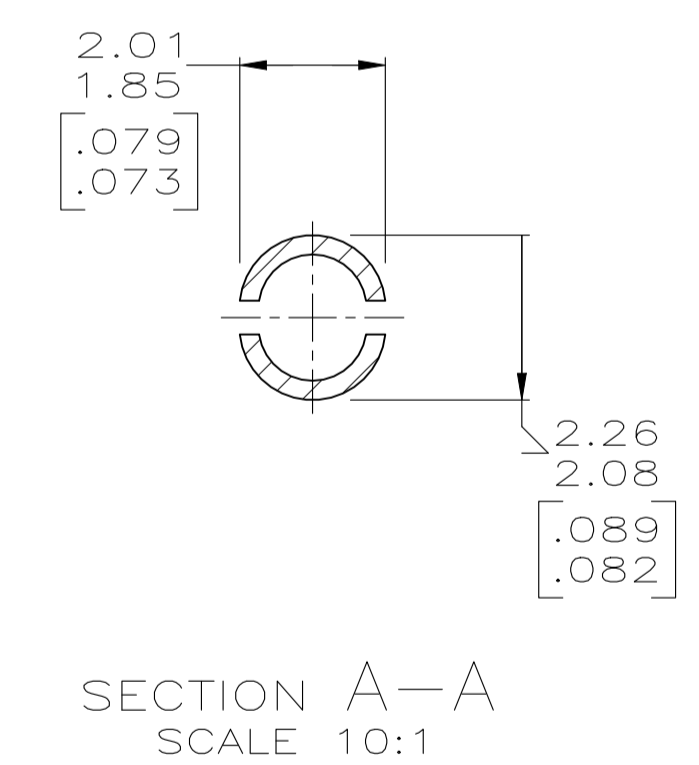
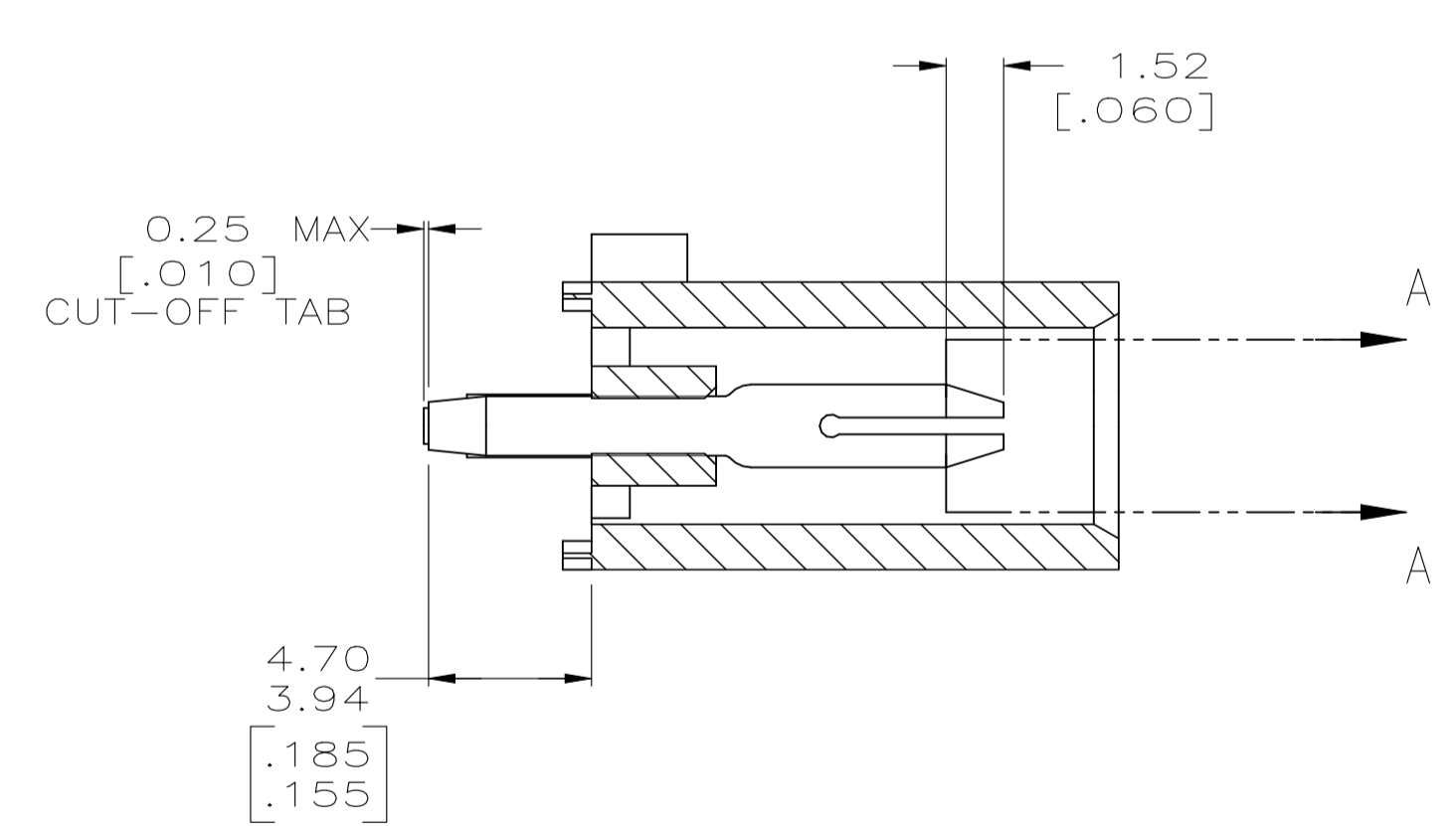


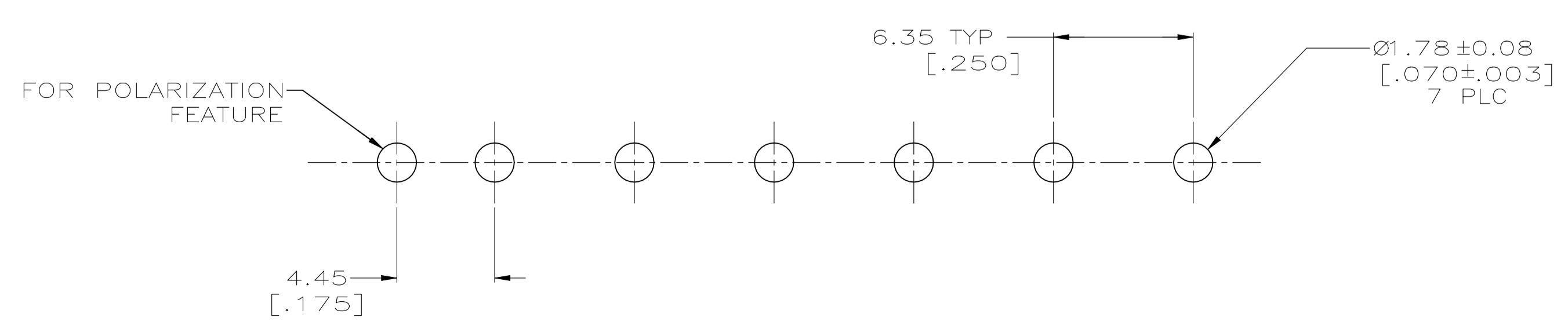
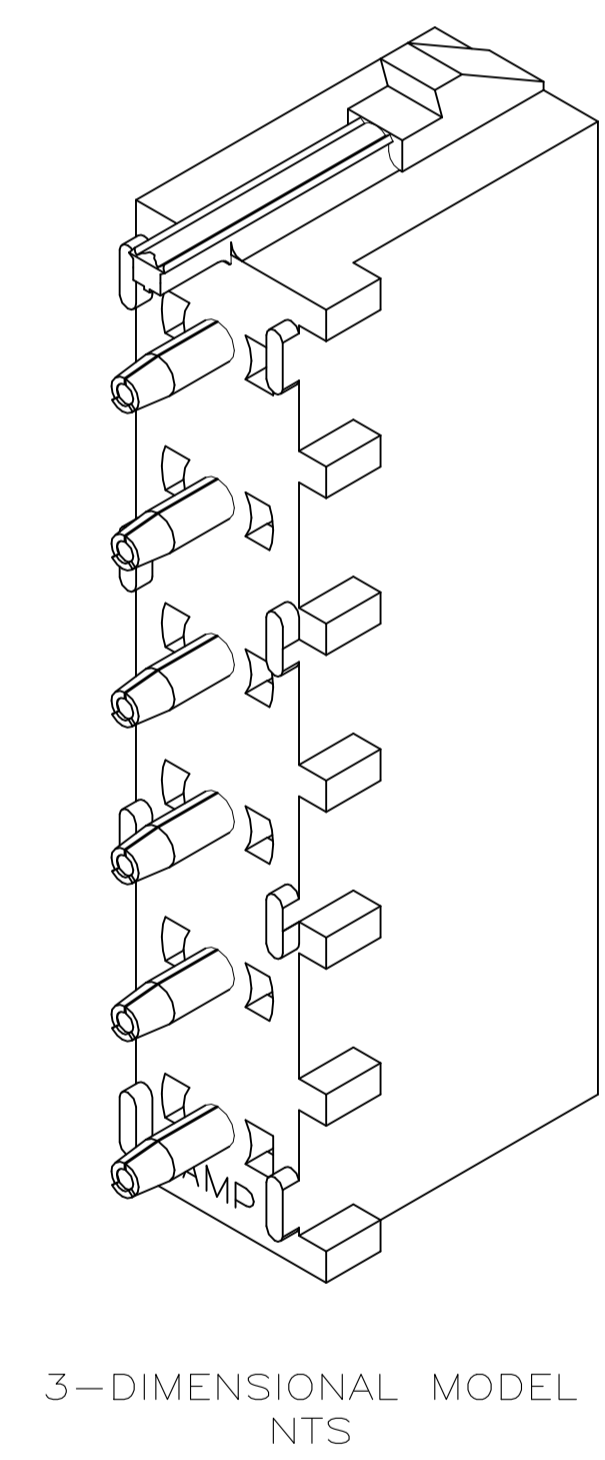
LOC	DIST	REVISIONS					
CM	00	P	LTR	DESCRIPTION	DATE	DWN	APVD
		L1		REVISED PER ECR-21-117154	01AUG2022	PJ	VS



- PARTS COMPLY TO AMP SOLDERABILITY SPECIFICATION 109-11-3.
- CIRCUIT IDENTIFICATION CHARACTERS ARE ADJACENT TO THE INDICATED CAVITIES, BUT LOCATION AND ORIENTATION MAY DIFFER FROM PRINT.
- DIMENSIONS IN BRACKETS ARE IN INCHES.
- IDENTIFICATION WILL APPEAR AT CIRCUIT NO. 1, OTHERS OPTIONAL.
- DIMENSION SHOWN REPRESENT PRODUCT IN DRY CONDITION. ADDITIONAL 2% GROWTH DUE TO END USE LOCATION MOISTURE ABSORPTION MAY OCCUR AND SHOULD BE ACCOUNTED FOR.



SECTION A-A  
SCALE 10:1



RECOMMENDED MOUNTING HOLE PATTERN FOR 1.57 [.062] THICK P.C. BOARD

PHOSPHOR BRONZE, PRE-TIN		NYLON, UL94V-2, NATURAL		643407-1	
PIN CONTACT MATERIAL AND FINISH		HOUSING MATERIAL		PART NO	
THIS DRAWING IS A CONTROLLED DOCUMENT.		DWN L. McEACHIN 07-JAN-2000		AMP Incorporated Harrisburg, PA 17105-3608	
DIMENSIONS: mm (INCHES)		CHK K. COBLE 07-JUN-2000		NAME	
TOLERANCES UNLESS OTHERWISE SPECIFIED:		APVD K. COBLE 07-JUN-2000		PRODUCT SPEC	
0 PLC ±-		NAME		APPLICATION SPEC	
1 PLC ±-		SIZE		WEIGHT	
2 PLC ±0.13 [.005]		CAGE CODE		SCALE	
3 PLC ±-		DRAWING NO		SHEET	
4 PLC ±-		A1 00779		1 OF 1	
ANGLES		CUSTOMER DRAWING		REV	
FINISH		SCALE 5:1		L1	

