
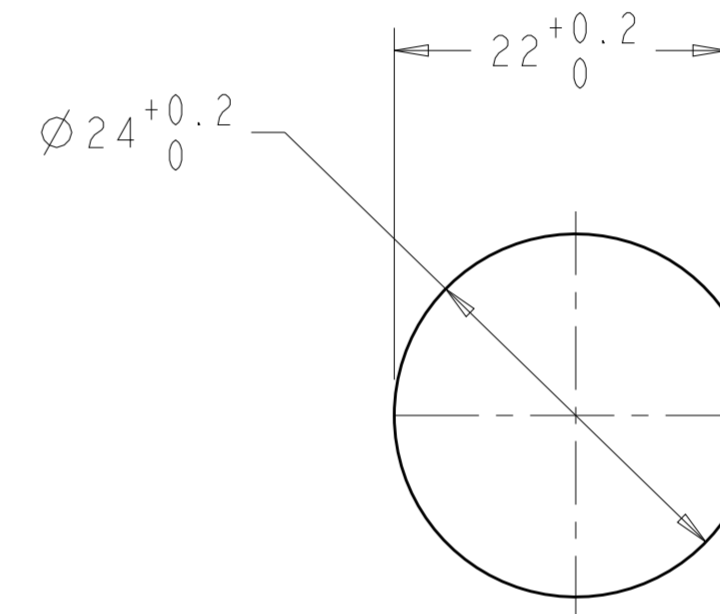
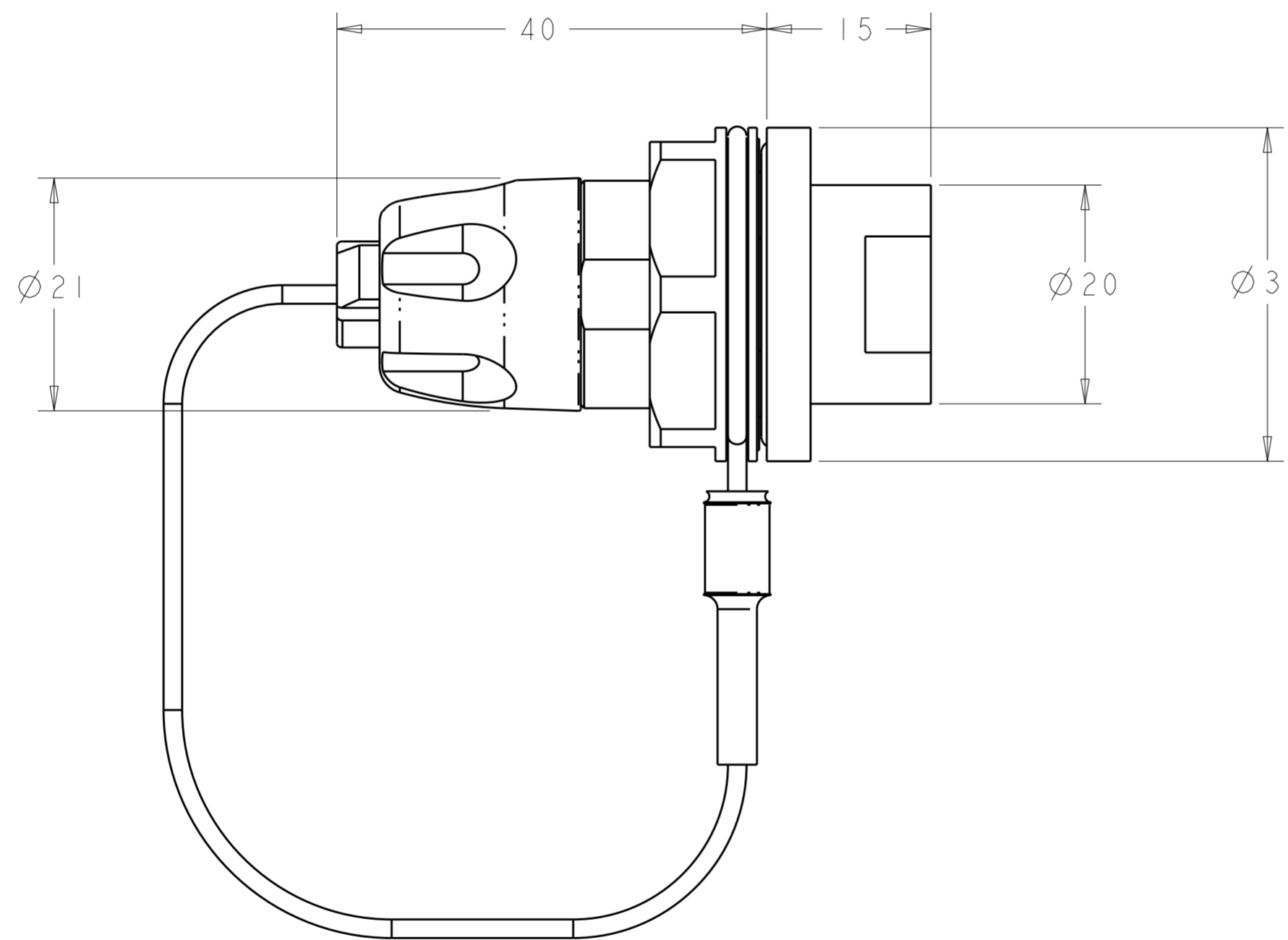


THIS DRAWING IS UNPUBLISHED. RELEASED FOR PUBLICATION 20
 © COPYRIGHT 20 BY - ALL RIGHTS RESERVED.

REVISIONS				
P	LTR	DESCRIPTION	DATE	APVD
	A2	ECR-15-009282	30JUL2015	KG DW


- ASSEMBLY SHOWN FOR REFERENCE ONLY. SHIPPED LOOSE PIECE AS SHOWN ON PAGE 2.
- ALL ASSEMBLY DIMENSION ARE FOR REFERENCE ONLY.
- COMPLETE THE CONNECTOR ASSEMBLY BY ADDING EACH OF THE FOLLOWING PRO BEAM MINI KITS:
 - EXPANDED BEAM INSERT ASSEMBLY KIT
 - FERRULE KIT, ONE PER FIBER
-  PANEL SHOULD BE BETWEEN 1mm AND 6mm THICKNESS.
- THIS PRODUCT HAS NOT COMPLETED VALIDATION TESTING.



 RECOMMENDED PANEL CUT-OUT

SUPERSEDED BY:
1828699-4

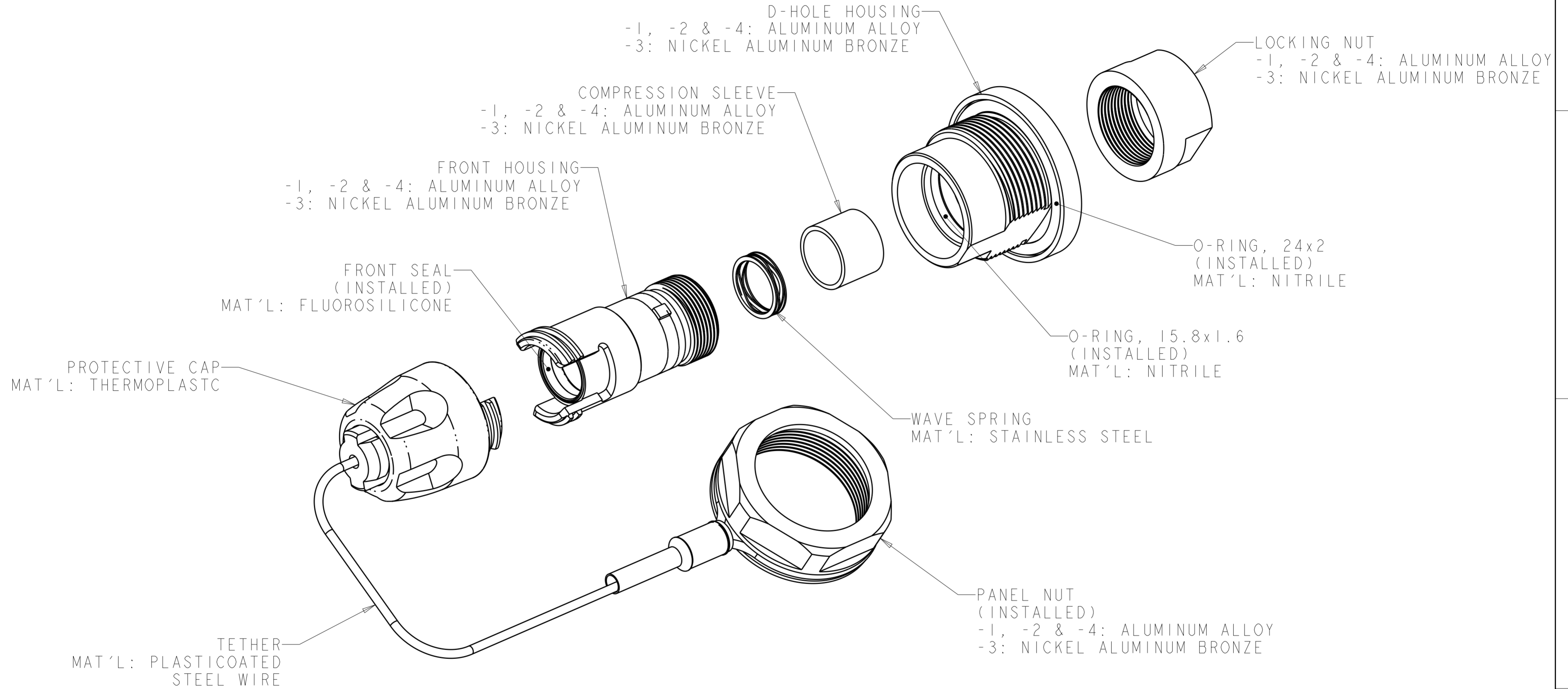
BLACK ZINC-NICKEL	ALUMINUM	1838699-4
NONE	NICKEL ALUMINUM BRONZE	1828699-3
OLIVE DRAB ZINC	ALUMINUM	1828699-2
HARD ANODIZE	ALUMINUM	1828699-1
HOUSING FINISH	HOUSING ALLOY	PART NUMBER

THIS DRAWING IS A CONTROLLED DOCUMENT.		DWN K. GLATFELTER 20 JUN 2005	 TE Connectivity	
DIMENSIONS: mm		CHK D. WERTMAN 24 JUN 2005		
TOLERANCES UNLESS OTHERWISE SPECIFIED:		APVD D. WERTMAN 24 JUN 2005	NAME CONNECTOR SHELL KIT, D-HOLE BULKHEAD, PRO BEAM MINI	
0 PLC ±		PRODUCT SPEC	-	
1 PLC ±		APPLICATION SPEC	-	
2 PLC ±		WEIGHT	-	
3 PLC ±		Customer Drawing	SCALE	2:1
4 PLC ±			SHEET	1 OF 2
ANGLES ±			REV	A2
FINISH				
MATERIAL				
-				
-				

THIS DRAWING IS UNPUBLISHED. RELEASED FOR PUBLICATION 20
 © COPYRIGHT 20 BY - ALL RIGHTS RESERVED.

REVISIONS				
P	LTR	DESCRIPTION	DATE	APVD
-		SEE SHEET 1	-	-

1. SHIPPED LOOSE PIECE AS SHOWN.



THIS DRAWING IS A CONTROLLED DOCUMENT.		DWN K. GLATFELTER 20 JUN 2005	TE Connectivity	
		CHK D. WERTMAN 24 JUN 2005		
		APVD D. WERTMAN 24 JUN 2005	NAME CONNECTOR SHELL KIT, D-HOLE BULKHEAD, PRO BEAM MINI	
DIMENSIONS: mm		PRODUCT SPEC	SIZE	CAGE CODE
TOLERANCES UNLESS OTHERWISE SPECIFIED: 0 PLC ± 1 PLC ± 2 PLC ± 3 PLC ± 4 PLC ± ANGLES ± FINISH		APPLICATION SPEC	A200779	C-1828699
MATERIAL		WEIGHT	RESTRICTED TO	
		Customer Drawing	SCALE 2:1	SHEET 2 OF 2
			REV A2	