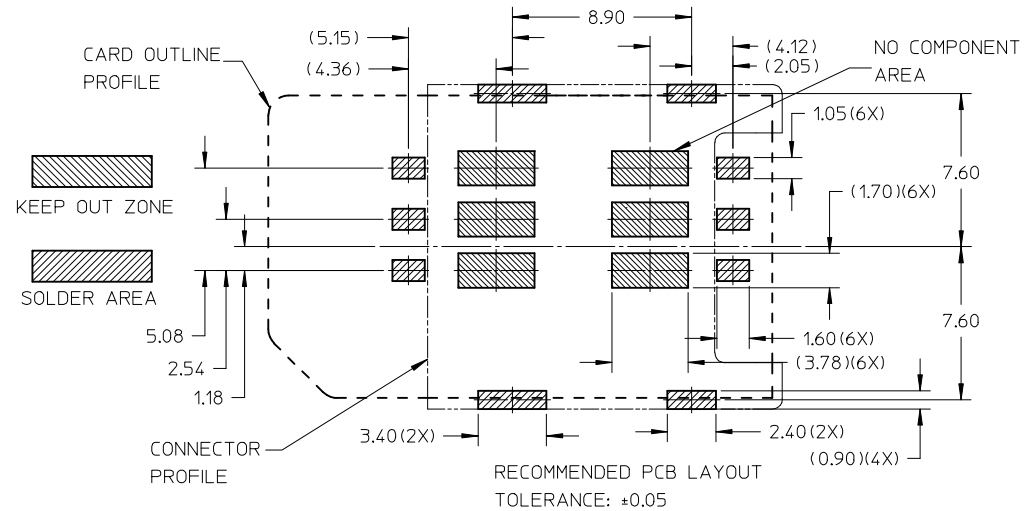


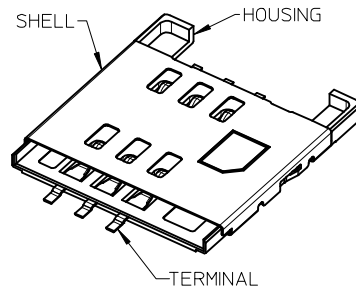
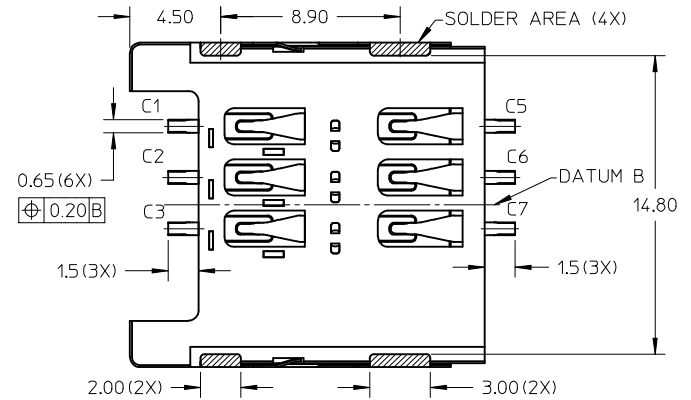
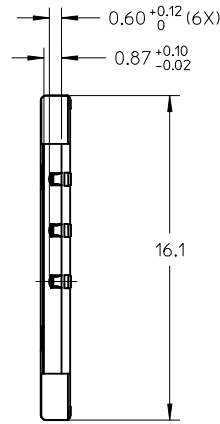
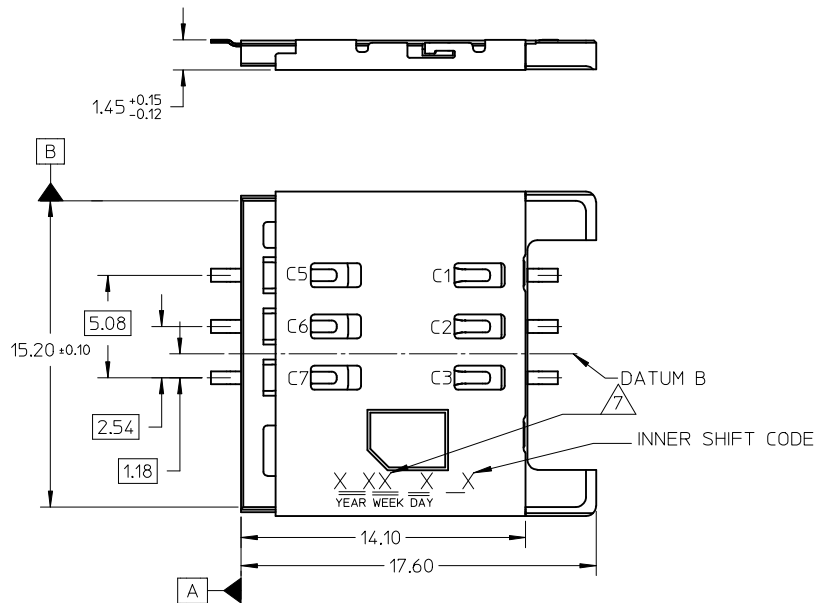
P/N	GOLD PLATING ON CONTACT AREA
1050480011	0.50um (20u") MIN
1050480001	0.375um (15u") MIN

NOTE:

- 1 MATERIAL
- HOUSING : LIQUID CRYSTALLINE POLYMER (LCP), GLASS FILLED UL94V-0, COLOR: BLACK
- TERMINAL : PHOSPHOR BRONZE
- SHELL : STAINLESS STEEL
- 2 FINISHES
- TERMINAL : 0.375um (15u") MIN GOLD ON CONTACT AREA
- 0.0762 - 0.127um (3 - 5u") GOLD FLASH ON SOLDER TAILS
- 1.27um (50u") MIN NICKEL UNDERPLATE OVER ALL
- SHELL : 0.0762um (3u") MIN GOLD FLASH OVER 1.27um (50u") MIN NICKEL UNDERPLATE ON SOLDER AREAS
- 3 PRODUCT SPECIFICATION: PS-105048-001
- 4 PACKAGING SPECIFICATION: PK-105048-001
- 5 ALL SOLDER TAILS COPLANARITY: 0.08mm MAX
- 6 COMPLIANT TO ROHS DIRECTIVE 2002/95/EC & ELV DIRECTIVE 2000/53/EC
- 7 DATE CODE *** (4 DIGITS)



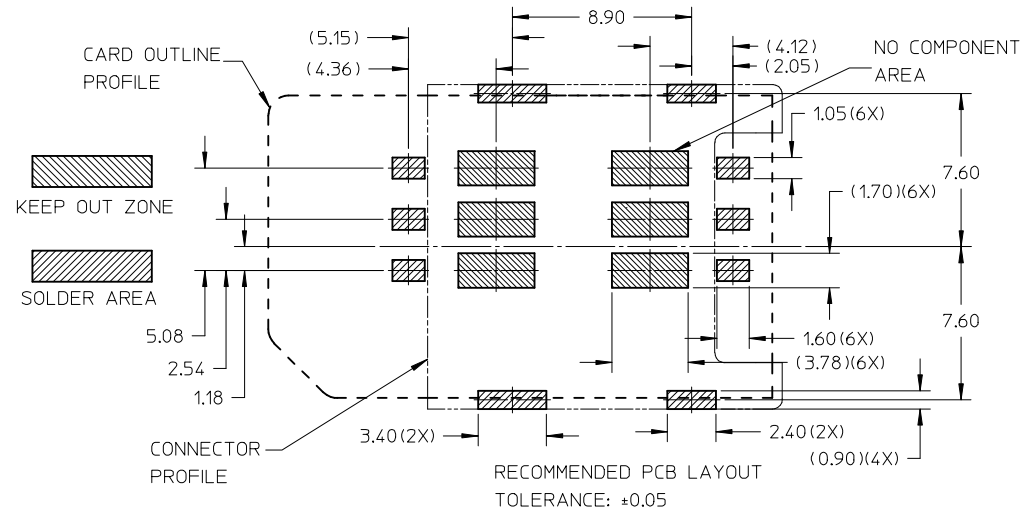
REV	DESCRIPTION	QUALITY SYMBOLS		GENERAL TOLERANCES (UNLESS SPECIFIED)		DIMENSION STYLE		SCALE	DESIGN UNITS	THIRD ANGLE PROJECTION	
		F _A =0	F _C =0	F _P =0	mm	INCH	MM ONLY	NTS	METRIC	⊙	
A2	ADD P/N: 1050480001 EC NO: S2012-0681 DRWN: JZENG CHKD: JTAN02 APPR: KHL IM									SIM CONNECTOR 6PIN WITH GUIDE RAIL 1.45MM HEIGHT	
										MOLEX INCORPORATED	
										SD-105048-011	SHEET NO. 1 OF 1
										THIS DRAWING CONTAINS INFORMATION THAT IS PROPRIETARY TO MOLEX INCORPORATED AND SHOULD NOT BE USED WITHOUT WRITTEN PERMISSION	



P/N	GOLD PLATING ON CONTACT AREA
1050480011	0.50um (20u") MIN
1050480001	0.375um (15u") MIN

NOTE:

- 1 MATERIAL
- HOUSING : LIQUID CRYSTALLINE POLYMER (LCP), GLASS FILLED UL94V-0, COLOR: BLACK
- TERMINAL : PHOSPHOR BRONZE
- SHELL : STAINLESS STEEL
- 2 FINISHES
- TERMINAL : 0.375um (15u") MIN GOLD ON CONTACT AREA
- 0.0762 - 0.127um (3 - 5u") GOLD FLASH ON SOLDER TAILS
- 1.27um (50u") MIN NICKEL UNDERPLATE OVER ALL
- SHELL : 0.0762um (3u") MIN GOLD FLASH OVER 1.27um (50u") MIN NICKEL UNDERPLATE ON SOLDER AREAS
- 3 PRODUCT SPECIFICATION: PS-105048-001
- 4 PACKAGING SPECIFICATION: PK-105048-001
- 5 ALL SOLDER TAILS COPLANARITY: 0.08mm MAX
- 6 COMPLIANT TO ROHS DIRECTIVE 2002/95/EC & ELV DIRECTIVE 2000/53/EC
- 7 DATE CODE *** (4 DIGITS)



REV	DESCRIPTION	QUALITY SYMBOLS		GENERAL TOLERANCES (UNLESS SPECIFIED)		DIMENSION STYLE		SCALE	DESIGN UNITS	THIRD ANGLE PROJECTION	
		F _A =0	F _C =0	F _P =0	mm	INCH	MM ONLY	NTS	METRIC	THIRD ANGLE PROJECTION	
A2	ADD P/N: 1050480001 EC NO: S2012-0681 DRWN: JZENG CHKD: JTAN02 APPR: KHL IM									SIM CONNECTOR 6PIN WITH GUIDE RAIL 1.45MM HEIGHT	
										MOLEX INCORPORATED	
										SD-105048-011	SHEET NO. 1 OF 1
										THIS DRAWING CONTAINS INFORMATION THAT IS PROPRIETARY TO MOLEX INCORPORATED AND SHOULD NOT BE USED WITHOUT WRITTEN PERMISSION	