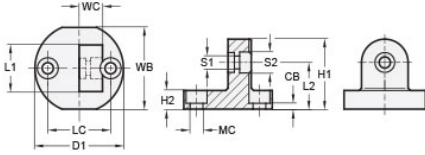




## MT15:16-CBSW-25-A

Ruland Swivel Clamp Connector Base, Ruland Swivel Thru Hole 6.5mm, Clamp Width 25mm, Clamp Screw M6, Aluminum



### Description

Ruland MT15:16-CBSW-25-A is a swivel clamp connector base with a 41mm base width, 45mm base diameter, 25mm clamp width, M6 clamp screw, and 37mm overall length. It is designed to fit with MT15, MT16, and MT15:16 swivel clamp joints, t-swivel clamp joints, and swivel mounts with the same width and height. When combined with a swivel clamp or connector MT15:16-CBSW-25-A is an ideal articulating mounting solution for screens, sensors, reflectors, plexiglass machine guards, and other components that require frequent adjustments. An MT15:16-SWALK-M6-25 adjustable clamping handle can be used to join it to clamps and connectors for rapid repositioning without the use of tools. It is aluminum and screws are 304 stainless steel for use in most industrial applications. MT15:16-CBSW-25-A can be permanently installed on extruded aluminum frames, sheet metal, and other surfaces using M6 hardware or the user can opt for portability by using MAGNET-57-32 magnetic base. It is manufactured by Otto Ganter, inventoried by Ruland, and RoHS3 compliant.

### Product Specifications

<b>Base Width WB</b>	41 mm	<b>Base Height H2</b>	10 mm
<b>Base Diameter D1</b>	45 mm	<b>Clamp Length L1</b>	25 mm
<b>Clamp Width WC</b>	12.5 mm	<b>Overall Height H1</b>	37 mm
<b>Center To Center LC</b>	32 mm	<b>Edge To Center L2</b>	24.5 mm
<b>Mounting Counterbore Diameter MC</b>	M6	<b>Counterbore to Base CB</b>	4 mm
<b>Swivel Counterbore 1 Diameter S1</b>	6.5 mm	<b>Swivel Counterbore 2 Diameter S2</b>	10.5 mm
<b>Material Specification</b>	Aluminum	<b>Manufacturer</b>	JW Winco/ Otto Ganter
<b>Country of Origin</b>	Germany	<b>Weight (lbs)</b>	0.121300
<b>UPC</b>	634529231432	<b>Tariff Code</b>	7609.00.0000
<b>UNSPC</b>	31162908		