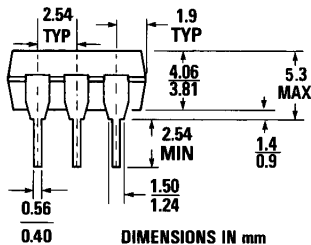
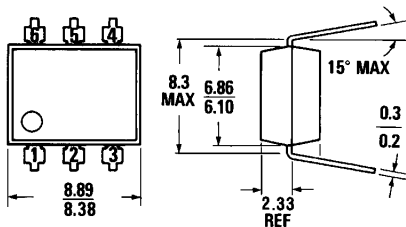
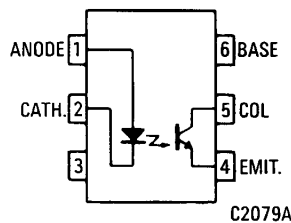


PACKAGE DIMENSIONS



DIMENSIONS IN mm
PACKAGE CODE K

ST1603A



C2079A

Equivalent Circuit

DESCRIPTION

The MOC series consists of a Gallium Arsenide IRED coupled with an NPN phototransistor.

FEATURES

- High isolation voltage
5300 VAC RMS—1 minute
7500 VAC PEAK—1 minute
- High BV_{CEO} minimum 70 volts
- Current transfer ratio in selected groups:
MOC8111: 20% min.
MOC8112: 50% min.
MOC8113: 100% min.
- Maximum switching time in saturation specified
- Underwriters Laboratory (UL) recognized File #E90700

APPLICATIONS

- Power supply regulators
- Digital logic inputs
- Microprocessor inputs
- Appliance sensor systems
- Industrial controls

ABSOLUTE MAXIMUM RATINGS

TOTAL PACKAGE

Storage temperature	−55°C to 150°C
Operating temperature	−55°C to 100°C
Lead temperature (soldering, 10 sec)	260°C
Total package power dissipation @ 25°C (LED plus detector)	260 mW
Derate linearly from 25°C	3.5 mW/°C

INPUT DIODE

Forward DC current	90 mA
Reverse voltage	6 V
Peak forward current (1 μ s pulse, 300 pps)	3.0 A
Power dissipation 25°C ambient	135 mW
Derate linearly from 25°C	1.8 mW/°C

OUTPUT TRANSISTOR

Power dissipation @ 25°C	200 mW
Derate linearly from 25°C	2.67 mW/°C

ELECTRO-OPTICAL CHARACTERISTICS (25°C Temperature Unless Otherwise Specified)

INDIVIDUAL COMPONENT CHARACTERISTICS

CHARACTERISTIC	SYMBOL	MIN.	TYP.	MAX.	UNITS	TEST CONDITIONS
INPUT DIODE						
Forward voltage	V_F		1.3	1.50	V	$I_F=60\text{ mA}$
Forward voltage temp. coefficient	$\frac{\Delta V_F}{\Delta T_A}$		-1.8		mV/°C	
Reverse voltage	V_R	6.0	15		V	$I_R=10\ \mu\text{A}$
Junction capacitance	C_J		50		pF	$V_F=0\text{ V}, f=1\text{ MHz}$
			65		pF	$V_F=1\text{ V}, f=1\text{ MHz}$
Reverse leakage current	I_R		.35	10	μA	$V_R=3.0\text{ V}$
OUTPUT TRANSISTOR						
Breakdown voltage Collector to emitter	BV_{CEO}	70			V	$I_C=1.0\text{ mA}, I_F=0$
Emitter to collector Leakage current	BV_{ECO}	7			V	$I_E=100\ \mu\text{A}, I_F=0$
Collector to emitter	I_{CEO}		5	50	nA	$V_{CE}=10\text{ V}, I_F=0$
Capacitance Collector to emitter			8		pF	$V_{CE}=0, f=1\text{ MHz}$

TRANSFER CHARACTERISTICS

DC CHARACTERISTICS	SYMBOL	MIN.	TYP.	MAX.	UNITS	TEST CONDITIONS
Current Transfer Ratio, collector to emitter	CTR	MOC8111	20		%	$I_F=10\text{ mA}; V_{CE}=5\text{ V}$
		MOC8112	50			
		MOC8113	100			
Saturation voltage	$V_{CE(SAT)}$		0.27	.40	V	$I_F=10\text{ mA}; I_C=2.5\text{ mA}$

TRANSFER CHARACTERISTICS

AC CHARACTERISTICS	SYMBOL	MIN.	TYP.	MAX.	UNITS	TEST CONDITIONS
SWITCHING TIMES						
Non-saturated Turn-on time	t_{on}		6.0	10	μs	$R_L=100\ \Omega; I_C=2\text{ mA}; V_{CC}=10\text{ V}$
Turn-off time	t_{off}		5.5	10	μs	See Fig. 10.

ELECTRO-OPTICAL CHARACTERISTICS
(25°C Temperature Unless Otherwise Specified) (Cont'd)

TRANSFER CHARACTERISTICS (Cont'd)

AC CHARACTERISTICS	SYMBOL	MIN.	TYP.	MAX.	UNITS	TEST CONDITIONS
SATURATED SWITCHING TIMES						
Turn-on time	t_{on}					
MOC8111			3.0	5.5	μ S	$I_F=20$ mA, $V_{CE}=0.4$ V
MOC8112, MOC8113			4.2	8.0	μ S	$I_F=10$ mA, $V_{CE}=0.4$ V
Rise-time	t_r					
MOC8111			2.0	4.0	μ S	$I_F=20$ mA, $V_{CE}=0.4$ V
MOC8112, MOC8113			3.0	6.0	μ S	$I_F=10$ mA, $V_{CE}=0.4$ V
Turn-off time	t_{off}					
MOC8111			18	34	μ S	$I_F=20$ mA, $V_{CE}=0.4$ V
MOC8112, MOC8113			23	39	μ S	$I_F=10$ mA, $V_{CE}=0.4$ V
Fall-time	t_f					
MOC8111			11	20	μ S	$I_F=20$ mA, $V_{CE}=0.4$ V
MOC8112, MOC8113			14	24	μ S	$I_F=10$ mA, $V_{CE}=0.4$ V

ISOLATION CHARACTERISTICS

CHARACTERISTICS	SYMBOL	MIN.	TYP.	MAX.	UNITS	TEST CONDITIONS
Isolation voltage	V_{iso}	5300			V_{AC} RMS	$I_{i0} \leq 1$ μ A, 1 minute
	V_{iso}	7500			V_{AC} PEAK	$I_{i0} \leq 1$ μ A, 1 minute
Isolation resistance	R_{iso}	10^{11}			ohms	$V_{i0}=500$ VDC
Isolation capacitance	C_{iso}		0.5		pF	$f=1$ MHz

ELECTRICAL CHARACTERISTIC CURVES
(25°C Free Air Temperature Unless Otherwise Specified)

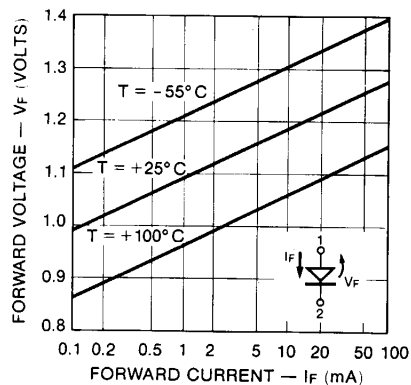


Fig. 1. Forward Voltage vs. Current

C1686

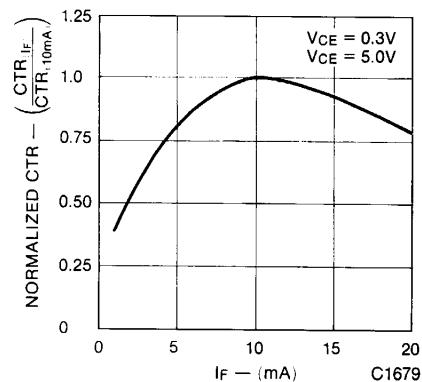


Fig. 2. Normalized CTR vs. Forward Current

C1679

ELECTRO-OPTICAL CHARACTERISTICS
(25°C Temperature Unless Otherwise Specified) (Cont'd)

TRANSFER CHARACTERISTICS (Cont'd)

AC CHARACTERISTICS	SYMBOL	MIN.	TYP.	MAX.	UNITS	TEST CONDITIONS
SATURATED SWITCHING TIMES						
Turn-on time	t_{on}					
MOC8111			3.0	5.5	μ S	$I_F=20$ mA, $V_{CE}=0.4$ V
MOC8112, MOC8113			4.2	8.0	μ S	$I_F=10$ mA, $V_{CE}=0.4$ V
Rise-time	t_r					
MOC8111			2.0	4.0	μ S	$I_F=20$ mA, $V_{CE}=0.4$ V
MOC8112, MOC8113			3.0	6.0	μ S	$I_F=10$ mA, $V_{CE}=0.4$ V
Turn-off time	t_{off}					
MOC8111			18	34	μ S	$I_F=20$ mA, $V_{CE}=0.4$ V
MOC8112, MOC8113			23	39	μ S	$I_F=10$ mA, $V_{CE}=0.4$ V
Fall-time	t_f					
MOC8111			11	20	μ S	$I_F=20$ mA, $V_{CE}=0.4$ V
MOC8112, MOC8113			14	24	μ S	$I_F=10$ mA, $V_{CE}=0.4$ V

ISOLATION CHARACTERISTICS

CHARACTERISTICS	SYMBOL	MIN.	TYP.	MAX.	UNITS	TEST CONDITIONS
Isolation voltage	V_{iso}	5300			V_{AC} RMS	$I_{i0} \leq 1$ μ A, 1 minute
	V_{iso}	7500			V_{AC} PEAK	$I_{i0} \leq 1$ μ A, 1 minute
Isolation resistance	R_{iso}	10^{11}			ohms	$V_{i0}=500$ VDC
Isolation capacitance	C_{iso}		0.5		pF	$f=1$ MHz

ELECTRICAL CHARACTERISTIC CURVES
(25°C Free Air Temperature Unless Otherwise Specified)

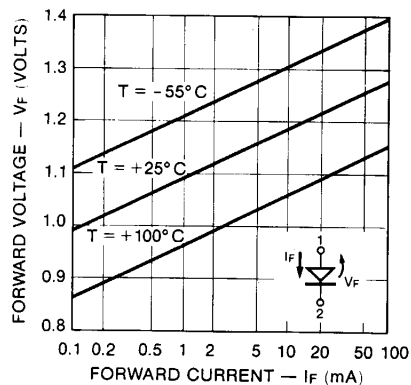


Fig. 1. Forward Voltage vs. Current

C1686

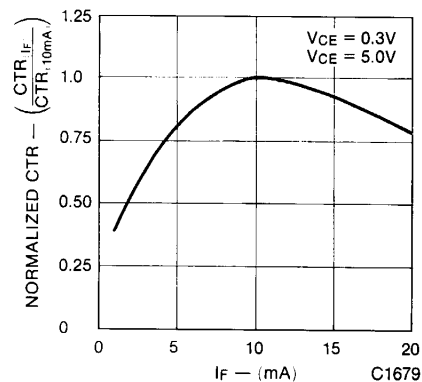


Fig. 2. Normalized CTR vs. Forward Current

C1679

ELECTRICAL CHARACTERISTIC CURVES
(25°C Free Air Temperature Unless Otherwise Specified) (Cont'd)

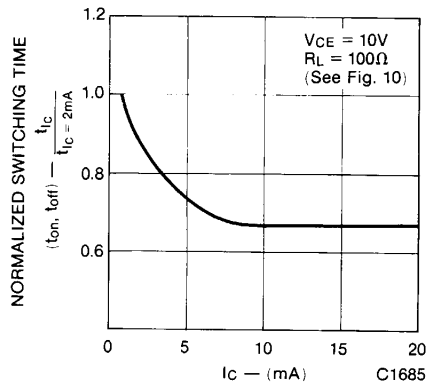


Fig. 5. Switching Time vs. IC

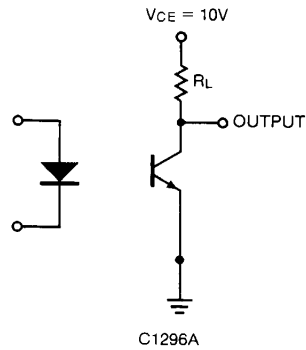


Fig. 6. Switching Time Test Circuit

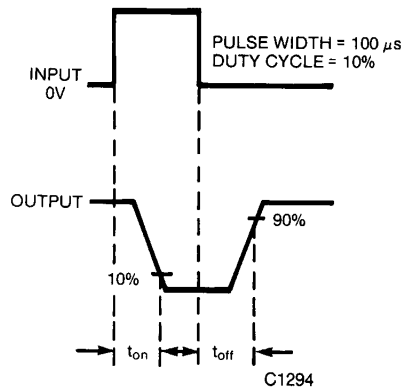


Fig. 7. Switching Time Waveforms



PHOTOTRANSISTOR OPTOCOUPLEDERS

DISCLAIMER

FAIRCHILD SEMICONDUCTOR RESERVES THE RIGHT TO MAKE CHANGES WITHOUT FURTHER NOTICE TO ANY PRODUCTS HEREIN TO IMPROVE RELIABILITY, FUNCTION OR DESIGN. FAIRCHILD DOES NOT ASSUME ANY LIABILITY ARISING OUT OF THE APPLICATION OR USE OF ANY PRODUCT OR CIRCUIT DESCRIBED HEREIN; NEITHER DOES IT CONVEY ANY LICENSE UNDER ITS PATENT RIGHTS, NOR THE RIGHTS OF OTHERS.

LIFE SUPPORT POLICY

FAIRCHILD'S PRODUCTS ARE NOT AUTHORIZED FOR USE AS CRITICAL COMPONENTS IN LIFE SUPPORT DEVICES OR SYSTEMS WITHOUT THE EXPRESS WRITTEN APPROVAL OF THE PRESIDENT OF FAIRCHILD SEMICONDUCTOR CORPORATION. As used herein:

1. Life support devices or systems are devices or systems which, (a) are intended for surgical implant into the body, or (b) support or sustain life, and (c) whose failure to perform when properly used in accordance with instructions for use provided in the labeling, can be reasonably expected to result in a significant injury of the user.
2. A critical component in any component of a life support device or system whose failure to perform can be reasonably expected to cause the failure of the life support device or system, or to affect its safety or effectiveness.