

ITEM	PART#	DESCRIPTION	QTY	UOM
A	510470900	PicoBlade1.25 Plug Hsg 9P	1	PC
B	501338000	PicoBlade1.25 Crimp Plug Term Chain	9	PC
C	--	Blank label 12.7x35.5mm (WHT:12.7mm) HF	1	PC

FROM	TO	DESCRIPTION	COLOR
A1	--	CABLE 28 AWG UL 1061 BLACK	BLACK
A2	--	CABLE 28 AWG UL 1061 BLACK	BLACK
A3	--	CABLE 28 AWG UL 1061 BLACK	BLACK
A4	--	CABLE 28 AWG UL 1061 BLACK	BLACK
A5	--	CABLE 28 AWG UL 1061 BLACK	BLACK
A6	--	CABLE 28 AWG UL 1061 BLACK	BLACK
A7	--	CABLE 28 AWG UL 1061 BLACK	BLACK
A8	--	CABLE 28 AWG UL 1061 BLACK	BLACK
A9	--	CABLE 28 AWG UL 1061 BLACK	BLACK

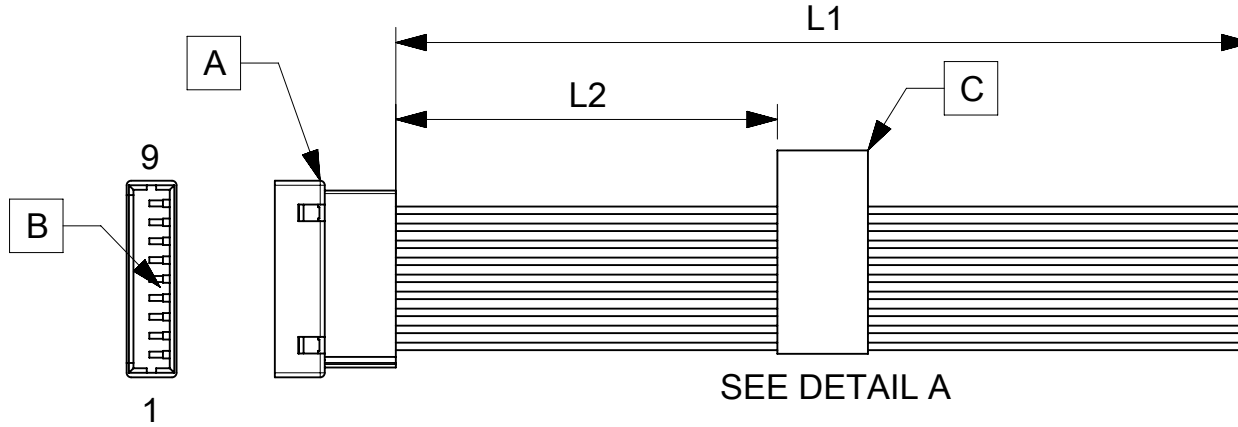
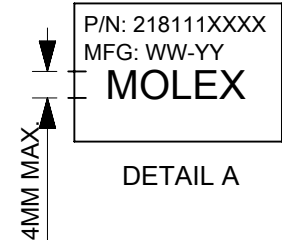


TABLE			
PART NUMBER	L1	L2 (REF)	TITLE
2181110900	75±5	30	9 CIRCUIT PICOBLADE P:BLUNT CABLE 75MM
2181110901	150±6	70	9 CIRCUIT PICOBLADE P:BLUNT CABLE 150MM
2181110902	225±6	105	9 CIRCUIT PICOBLADE P:BLUNT CABLE 225MM
2181110903	300±8	145	9 CIRCUIT PICOBLADE P:BLUNT CABLE 300MM
2181110904	425±8	205	9 CIRCUIT PICOBLADE P:BLUNT CABLE 425MM



- NOTES
1. Connector view shown is from mating side.
 2. Free ends must be blunt cut.
 3. Label text must be 2mm max. in height with Arial font.
 4. Label must be wrapped in flag type on the cables.

FUNCTIONAL SYMBOLS $\frac{F}{A} = 0$ $\frac{F}{E} = 0$ $\frac{F}{P} = 0$ DIVISIONAL SYMBOLS	THIS DRAWING CONTAINS INFORMATION THAT IS PROPRIETARY TO MOLEX ELECTRONIC TECHNOLOGIES, LLC AND SHOULD NOT BE USED WITHOUT WRITTEN PERMISSION		CURRENT REV DESC:					
	DIMENSION UNITS	SCALE	GENERAL TOLERANCES (UNLESS SPECIFIED)					
	mm	NTS	ANGULAR TOL ± °					
	4 PLACES ±		3 PLACES ±					
3 PLACES ±		2 PLACES ±		EC NO: 659320	2021/03/04			
2 PLACES ±		1 PLACE ±		DRWN: ARAJU		2021/03/26		
1 PLACE ±		0 PLACES ±		CHK'D: RDESAI01	2021/03/26			
DRAFT WHERE APPLICABLE MUST REMAIN WITHIN DIMENSIONS		THIRD ANGLE PROJECTION	DRAWING	SERIES	DOCUMENT NUMBER	DOC TYPE	DOC PART	REVISION
			A4-SIZE	218111	2181110900	PSD	000	A
					MATERIAL NUMBER	CUSTOMER		SHEET NUMBER
					SEE TABLE	GENERAL MARKET		1 OF 1

REVISION			
DATE	REV	DESCRIPTION	CHANGER
04/03/2021	A	INITIAL RELEASE	ARAJU

DOCUMENT STATUS	P1	RELEASE DATE	2021/03/26	04:03:42
-----------------	----	--------------	------------	----------