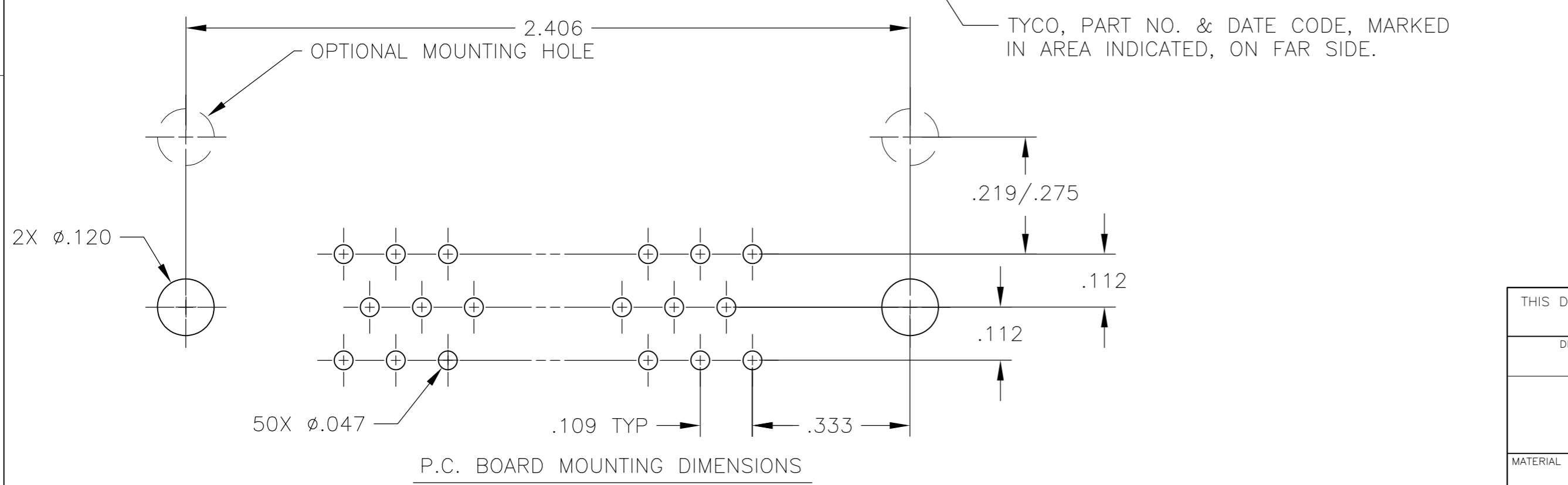
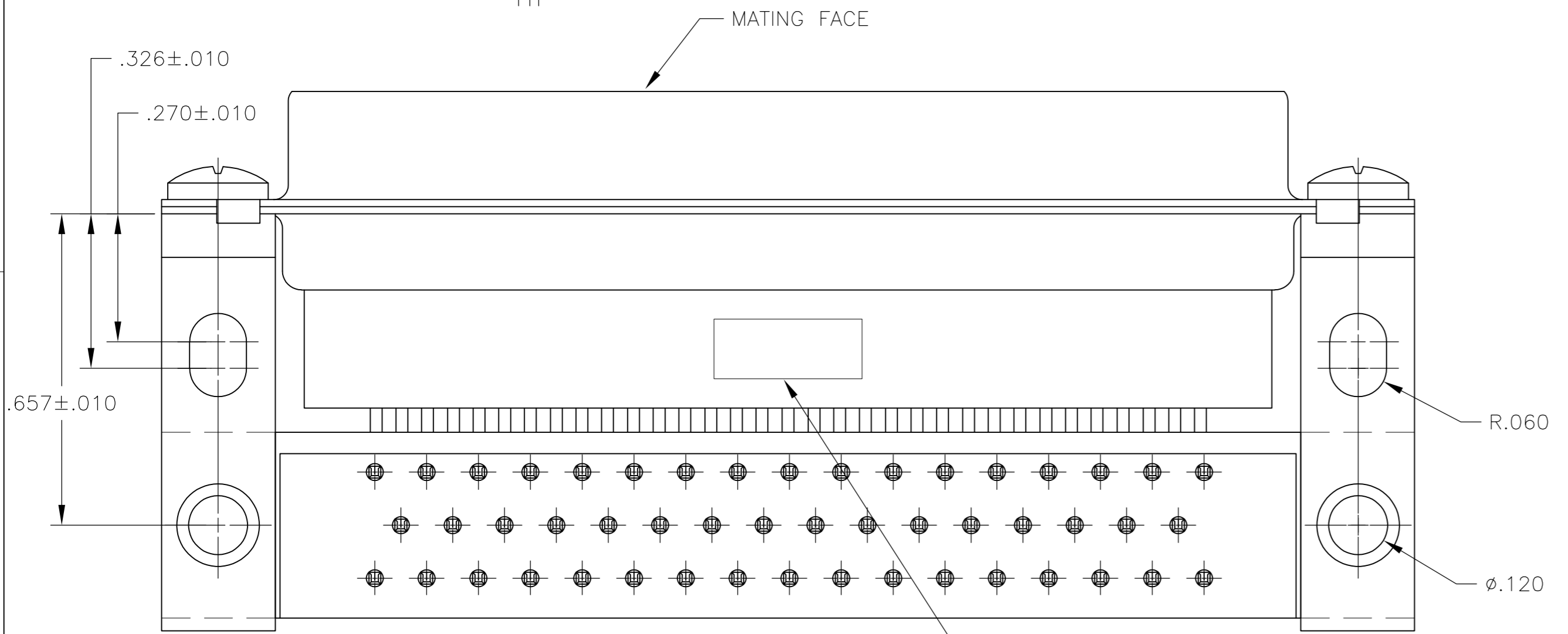
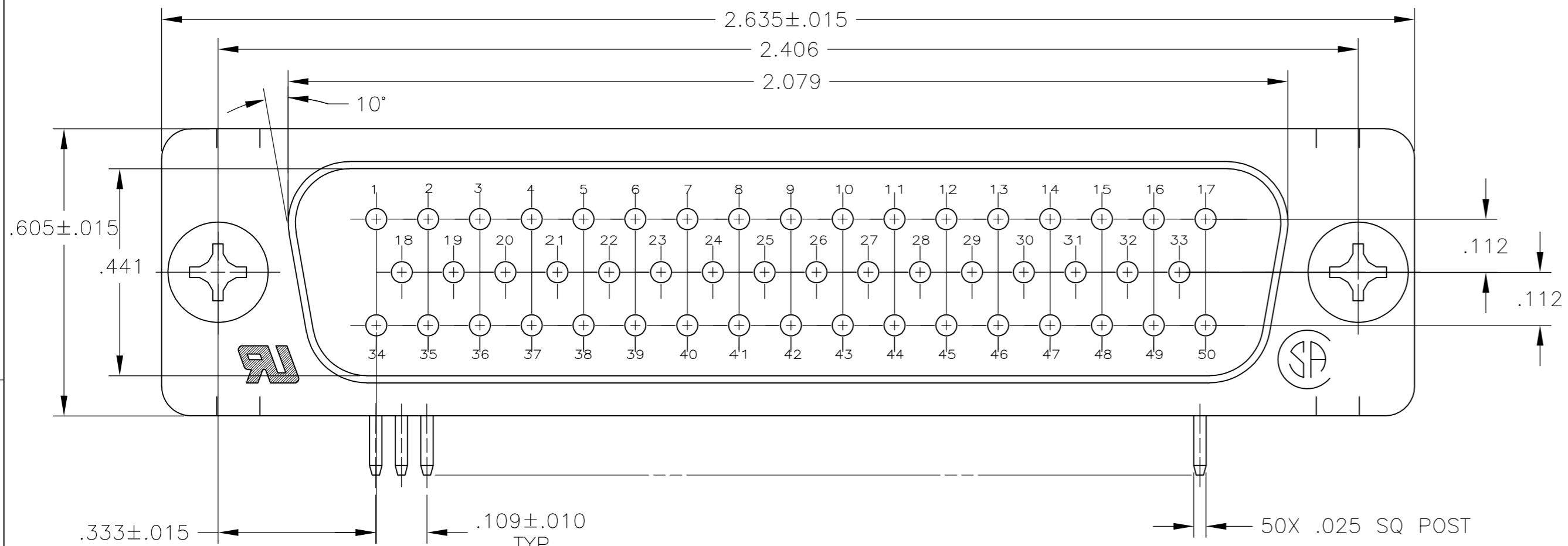
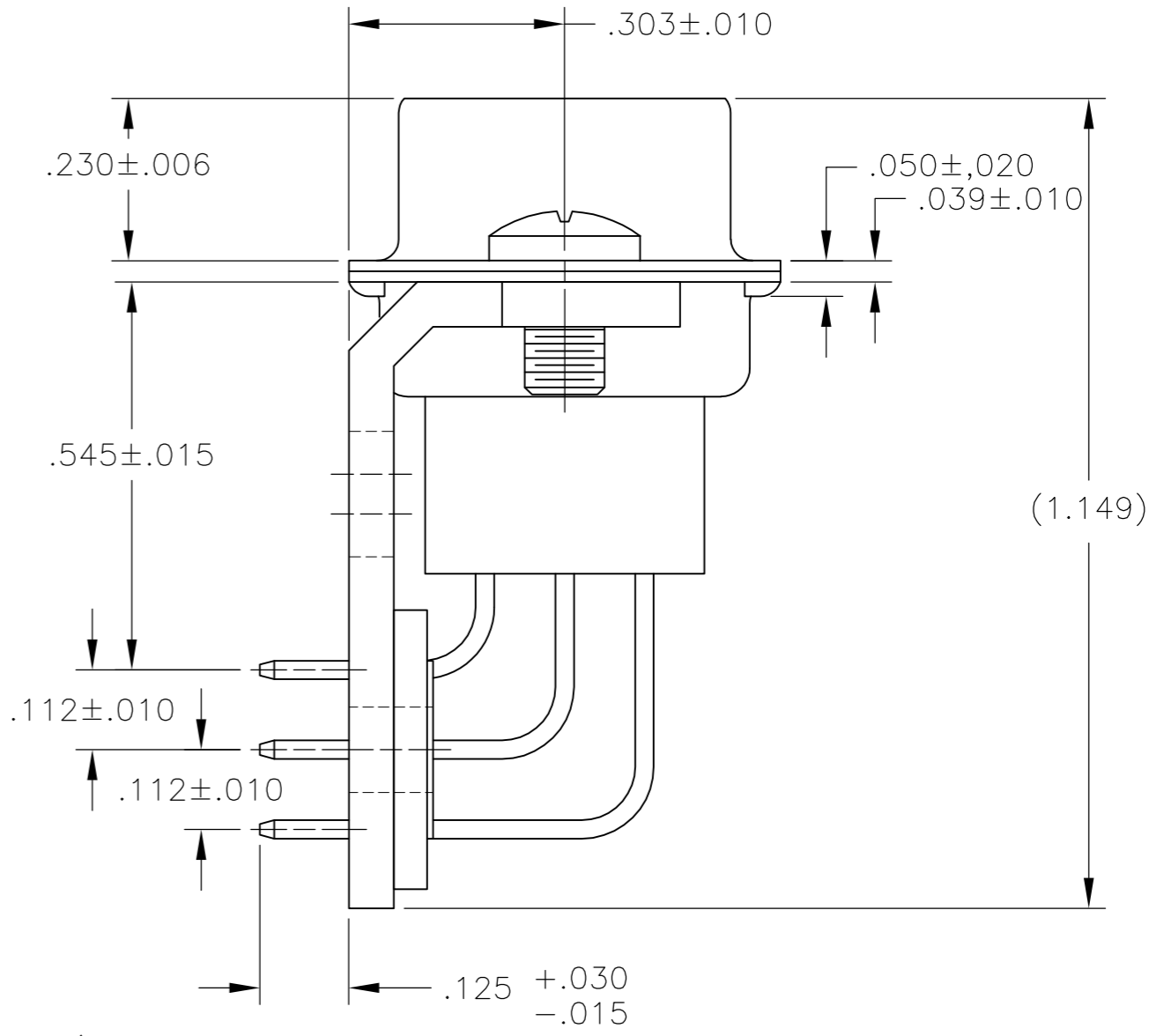


THIS DRAWING IS UNPUBLISHED. RELEASED FOR PUBLICATION  
 © COPYRIGHT 2005 By - ALL RIGHTS RESERVED.

LOC		DIST		REVISIONS			
P	LTR	DESCRIPTION	DATE	DWN	APVD		
GP	00	B	REVISED PER ECO-14-011808	11AUG2014	AP	SB	



- 1 MOLDED PARTS: GLASS-FILLED PBT OR GLASS-FILLED NYLON, UL94V-0 RATED. COLOR: BLACK.  
SHELLS & BRACKETS: CARBON STEEL  
CONTACTS: BRASS
- 2 SHELLS & BRACKETS: .000200 MIN ZINC WITH YELLOW CHROMATE COATING.  
CONTACTS: GOLD PLATED FOR LENGTH OF .150 MIN FROM MATING END, GOLD FLASH IN MATED AREA.  
.000100 MIN TIN ON SOLDER END, BOTH OVER  
.000050 MIN NICKEL.
- 3 SHELLS & BRACKETS: .000200 MIN ZINC WITH YELLOW CHROMATE COATING.  
CONTACTS: GOLD PLATED FOR LENGTH OF .150 MIN FROM MATING END, .000030 MIN GOLD IN MATED AREA,  
.000100 MIN TIN ON SOLDER END, BOTH OVER  
.000050 MIN NICKEL.  
OR  
GOLD FLASH OVER PALLADIUM NICKEL PLATED FOR LENGTH OF .150 MIN FROM MATING END,  
.000030 MIN PALLADIUM NICKEL IN MATED AREA,  
.000100 MIN TIN ON SOLDER END, BOTH OVER  
.000050 MIN NICKEL.



4 OBSOLETE PARTS: OBSOLETE CIS STREAMLINING PER D.RENAUD/D.SINISI

4 OBSOLETE	3	5205869-2
	2	5205869-1
	CONTACT FINISH	PART NUMBER

THIS DRAWING IS A CONTROLLED DOCUMENT.		DWN G.PETERS 17OCT2005	<b>TE</b> TE Connectivity	
DIMENSIONS: INCHES		CHK S.BOLASH 17OCT05		
TOLERANCES UNLESS OTHERWISE SPECIFIED:		APVD M.WALMSLEY 17OCT05	NAME	
0 PLC ± -		PRODUCT SPEC	108-40025	
1 PLC ± -		APPLICATION SPEC	114-40013	
2 PLC ± -		WEIGHT	-	
3 PLC ± ±.005		SIZE	A2	
4 PLC ± ±.010		CAGE CODE	00779	
ANGLES ± ±2°		DRAWING NO	C=5205869	
FINISH		RESTRICTED TO	-	
1		CUSTOMER DRAWING	SCALE	4:1
2 3		SHEET	1 of 1	
		REV	B	