

# Customer Information Sheet

DRAWING No.: M80-782XXXX

IF IN DOUBT - ASK

©

NOT TO SCALE

THIRD ANGLE PROJECTION

ALL DIMENSIONS IN mm

**SPECIFICATIONS:**

**MATERIAL:**  
 MOULDING = GLASS-FILLED PPS UL94V-0, BLACK  
 CONTACTS = PHOSPHOR BRONZE  
 LATCHES = BERYLLIUM COPPER

**FINISH:**

**CONTACTS:**

22 = 0.75µm GOLD ON CONTACT AREA.  
 3.0µm 90/10 TIN/LEAD ON TAILS  
 42 = 0.75µm GOLD ON CONTACT AREA.  
 3.0µm 100% TIN OVER NICKEL ON TAILS  
 45 = 0.75µm GOLD  
 LATCH = 1.25µm NICKEL

**ELECTRICAL:**

CURRENT RATING (25°C) = 3.0A MAX.  
 CURRENT RATING (85°C) = 2.2A MAX.  
 WORKING VOLTAGE = 800V AC/DC  
 VOLTAGE PROOF = 1200V AC/DC  
**CONTACT RESISTANCE:**

INITIAL = 20 mΩ MAX.  
 AFTER CONDITIONING = 25 mΩ MAX.  
**INSULATION RESISTANCE:**  
 INITIAL = 1000 MΩ MIN.  
 AFTER CONDITIONING = 100 MΩ MIN.

**MECHANICAL:**

DURABILITY = 500 OPERATIONS

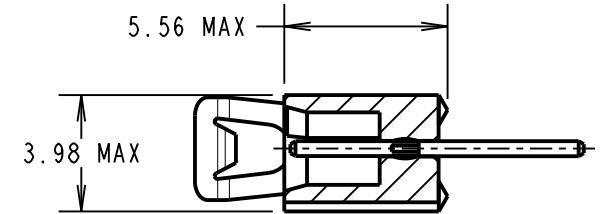
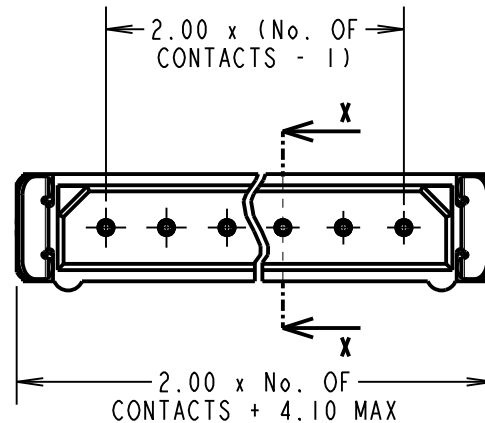
**ENVIRONMENTAL:**

TEMPERATURE RANGE = -55°C TO +125°C

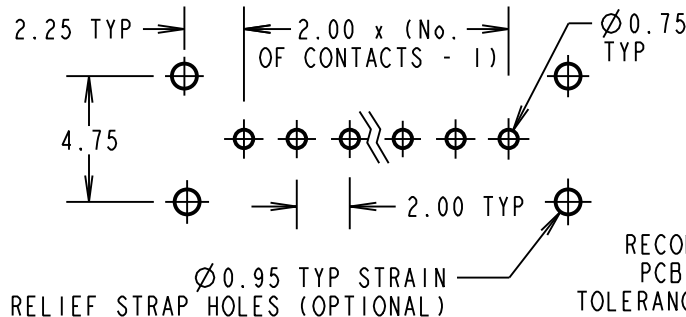
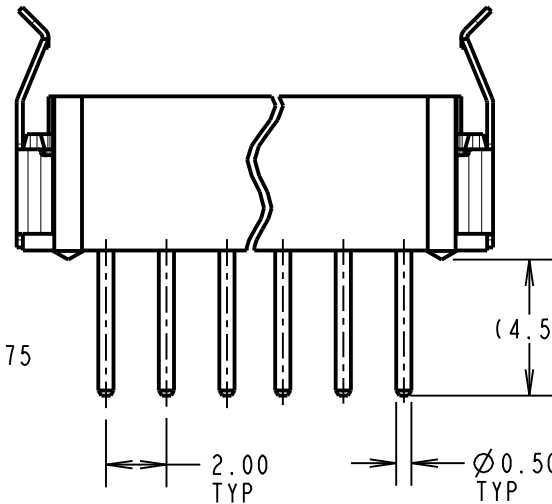
**PACKING:**

TUBE

FOR COMPLETE SPECIFICATION, SEE COMPONENT SPECIFICATION C005XX (LATEST ISSUE)



SECTION X-X



RECOMMENDED PCB LAYOUT TOLERANCE  $\pm 0.05\text{mm}$

**NOTES:**

- 2-OFF STRAIN RELIEF STRAPS M80-0030006 MAY BE USED WITH EACH CONNECTOR.

**OBSOLETE**

Pin counts 17 and 22  
 Last Time Buy 21-Aug-2020

ORDER CODE: **M80-782XXXX**

TOTAL No. OF CONTACTS  
 02-07, ~~17, 22~~

**FINISH:**

- 22 - GOLD ON CONTACT AREA  
TIN/LEAD ON TAILS
- 42 - GOLD ON CONTACT AREA  
100% TIN ON TAILS
- 45 - GOLD

MGP	5	01.12.21	31135
NAME	ISS.	DATE	CN/CO
APPROVED: MGP			
CHECKED: RA			
DRAWN: JM BROOKES			
CUSTOMER REF.:			
ASSEMBLY DRG:			

**HARWIN**

www.harwin.com  
 technical@harwin.com

THIS DRAWING AND ANY INFORMATION OR DESCRIPTIVE MATTER SET OUT HEREON ARE CONFIDENTIAL AND COPYRIGHT PROPERTY OF THE HARWIN GROUP AND MUST NOT BE DISCLOSED, LOANED, COPIED OR USED FOR MANUFACTURING, TENDERING OR FOR ANY OTHER PURPOSE WITHOUT THEIR WRITTEN PERMISSION.

**TOLERANCES**  
 X. =  $\pm 1\text{mm}$   
 X.X =  $\pm 0.50\text{mm}$   
 X.XX =  $\pm 0.20\text{mm}$   
 X.XXX =  $\pm 0.01\text{mm}$   
 ANGLES =  $\pm 5^\circ$   
 UNLESS STATED

**MATERIAL:**  
 SEE ABOVE  
**FINISH:** SEE ABOVE  
**S/AREA:** mm<sup>2</sup>

**TITLE:** DATAMATE SIL VERTICAL MALE PC TAIL ASSEMBLY - LATCHED

**DRAWING NUMBER:** M80-782XXXX

SHT  
 2 OF 2