

Surface Mount Frequency Mixer

ADE-1HW+

Level 17 (LO Power +17 dBm) 5 to 750 MHz

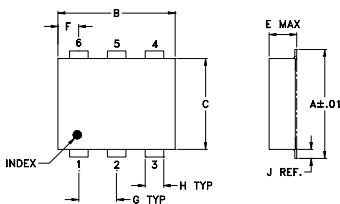
Maximum Ratings

Operating Temperature	-40°C to 85°C
Storage Temperature	-55°C to 100°C
RF Power	200mW
IF Current	40mA
Permanent damage may occur if any of these limits are exceeded.	

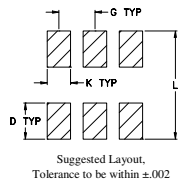
Pin Connections

LO	6
RF	3
IF	2
GROUND	1,4,5

Outline Drawing



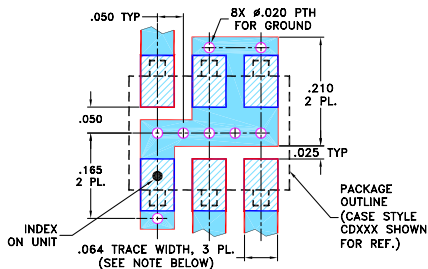
PCB Land Pattern



Outline Dimensions (inch/mm)

A	B	C	D	E	F	G
.272	.310	.220	.100	.112	.055	.100
6.91	7.87	5.59	2.54	2.84	1.40	2.54
H	J	K	L	wt		
.030	.026	.065	.300	grams		
0.76	0.66	1.65	7.62	0.20		

Demo Board MCL P/N: TB-03 Suggested PCB Layout (PL-052)



- NOTES:**
- TRACE WIDTH IS SHOWN FOR ROGERS RO4350B WITH DIELECTRIC THICKNESS .030" ± .002"; COPPER: 1/2 OZ. EACH SIDE. FOR OTHER MATERIALS TRACE WIDTH MAY NEED TO BE MODIFIED.
 - BOTTOM SIDE OF THE PCB IS CONTINUOUS GROUND PLANE.
-

Notes

- Performance and quality attributes and conditions not expressly stated in this specification document are intended to be excluded and do not form a part of this specification document.
- Electrical specifications and performance data contained in this specification document are based on Mini-Circuit's applicable established test performance criteria and measurement instructions.
- The parts covered by this specification document are subject to Mini-Circuits standard limited warranty and terms and conditions (collectively, "Standard Terms"); Purchasers of this part are entitled to the rights and benefits contained therein. For a full statement of the Standard Terms and the exclusive rights and remedies thereunder, please visit Mini-Circuits' website at www.minicircuits.com/MCLStore/terms.jsp

Features

- low conversion loss, 6.0 dB typ.
- excellent L-R isolation, 48 dB typ.
- excellent L-I isolation, 40 dB typ.
- aqueous washable
- protected by US patent 6,133,525

Applications

- VHF/UHF receivers



Generic photo used for illustration purposes only
CASE STYLE: CD542

+RoHS Compliant

The +Suffix identifies RoHS Compliance. See our web site for RoHS Compliance methodologies and qualifications



Available Tape and Reel at no extra cost

Reel Size	Devices/Reel
7"	20, 50, 100, 200
13"	500, 1000

Electrical Specifications

FREQUENCY (MHz)	CONVERSION LOSS (dB)	LO-RF ISOLATION (dB)			LO-IF ISOLATION (dB)			IP3 at center band (dBm)						
		L	M	U	L	M	U							
5-750	DC-750	64	45	48	35	42	28	50	35	40	30	30	18	26

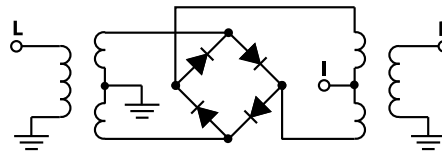
1 dB COMP.: +14 dBm typ.

L = low range [f_L to $10 f_L$] M = mid range [$10 f_L$ to $f_U/2$] U = upper range [$f_U/2$ to f_U]
m = mid band [$2f_L$ to $f_U/2$]

Typical Performance Data

Frequency (MHz)		Conversion Loss (dB)	Isolation L-R (dB)	Isolation L-I (dB)	VSWR RF Port (:1)	VSWR LO Port (:1)
RF	LO	LO +17dBm	LO +17dBm	LO +17dBm	LO +17dBm	LO +17dBm
5.00	35.00	6.34	64.80	52.10	1.35	1.38
10.00	40.00	6.07	64.50	50.90	1.20	1.38
20.00	50.00	6.03	62.90	48.30	1.12	1.38
50.00	80.00	5.86	59.30	44.20	1.06	1.41
65.19	95.19	5.76	56.90	44.10	1.04	1.51
130.18	160.18	5.68	54.80	41.00	1.02	1.58
195.17	225.17	5.82	48.90	41.90	1.00	1.66
250.00	280.00	5.92	47.90	40.80	1.02	1.62
260.16	290.16	5.73	47.80	40.30	1.02	1.64
295.00	325.00	5.93	47.00	38.80	1.04	1.75
300.00	330.00	5.90	46.80	38.90	1.04	1.75
325.15	355.15	5.96	45.70	39.20	1.04	1.68
390.14	420.14	6.02	46.40	34.70	1.08	1.84
455.13	485.13	6.15	45.20	31.60	1.11	1.80
500.00	530.00	6.24	43.40	30.70	1.13	1.87
520.12	550.12	6.25	42.90	30.20	1.14	1.81
585.11	615.11	6.25	41.50	28.10	1.16	2.06
650.10	680.10	6.16	40.30	26.60	1.22	2.23
715.09	745.09	6.52	39.10	26.10	1.29	2.18
750.00	780.00	6.73	38.60	25.60	1.37	2.58

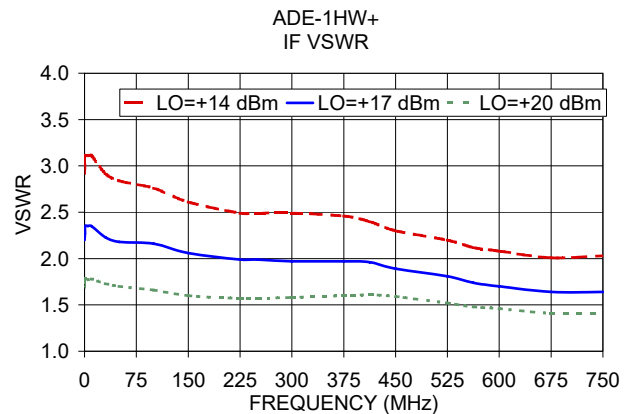
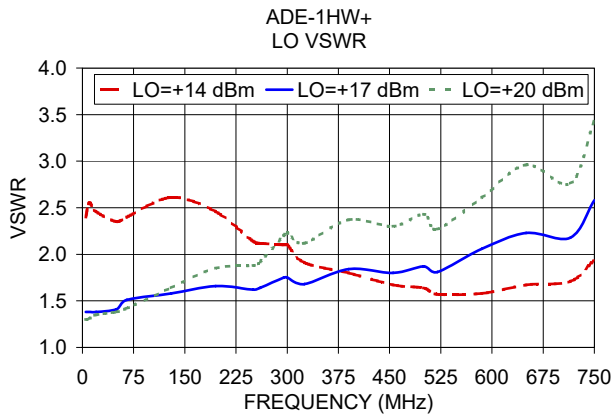
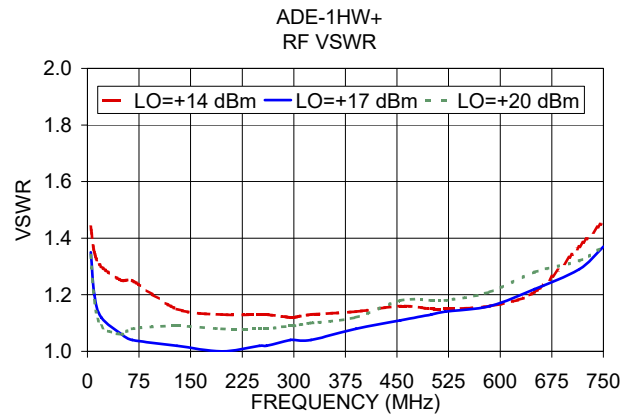
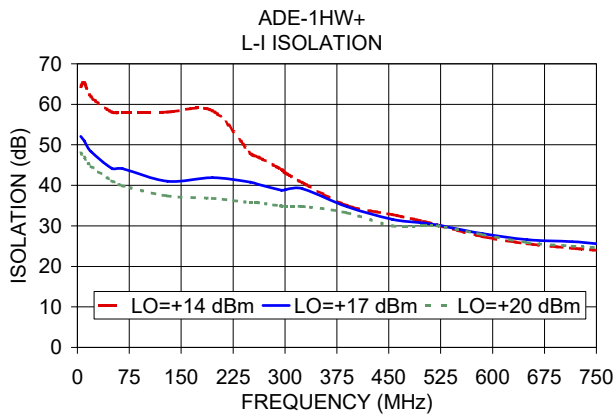
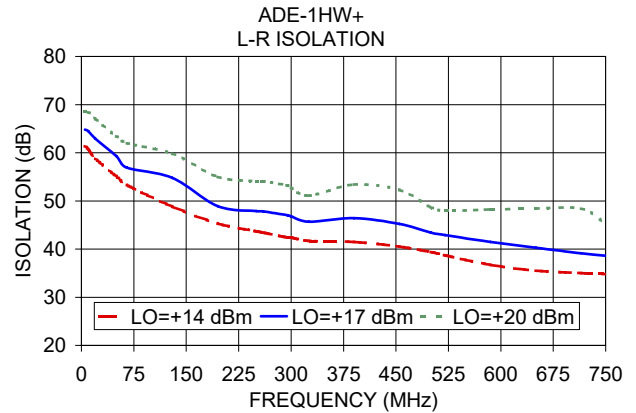
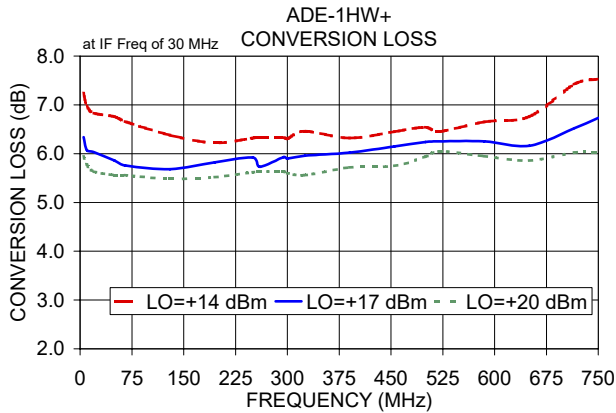
Electrical Schematic



Mini-Circuits

www.minicircuits.com P.O. Box 350166, Brooklyn, NY 11235-0003 (718) 934-4500 sales@minicircuits.com

REV. G
M158496
ADE-1HW
ED-8339/1
DJ/TD/CP/AM
200415
Page 1 of 2



Notes

- A. Performance and quality attributes and conditions not expressly stated in this specification document are intended to be excluded and do not form a part of this specification document.
- B. Electrical specifications and performance data contained in this specification document are based on Mini-Circuits' applicable established test performance criteria and measurement instructions.
- C. The parts covered by this specification document are subject to Mini-Circuits standard limited warranty and terms and conditions (collectively, "Standard Terms"); Purchasers of this part are entitled to the rights and benefits contained therein. For a full statement of the Standard Terms and the exclusive rights and remedies thereunder, please visit Mini-Circuits' website at www.minicircuits.com/MCLStore/terms.jsp

