

10 9 8 7 6 5 4 3 2 1

F

E

D

C

B

A

F

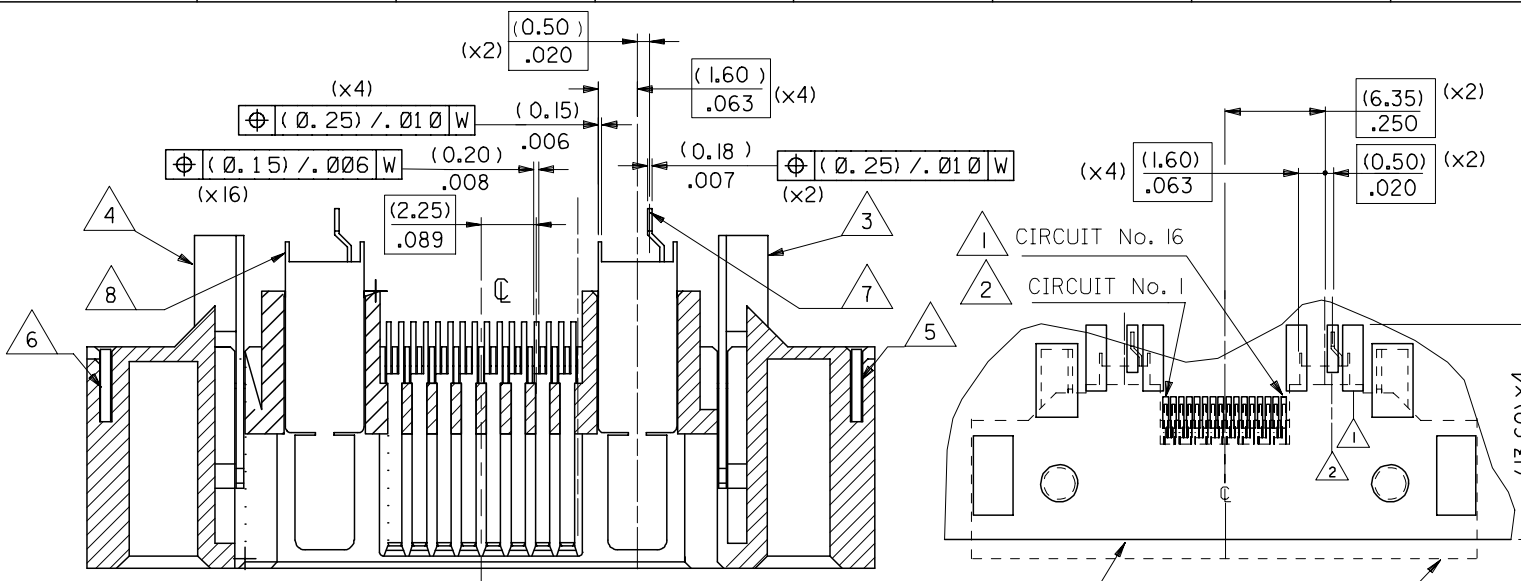
E

D

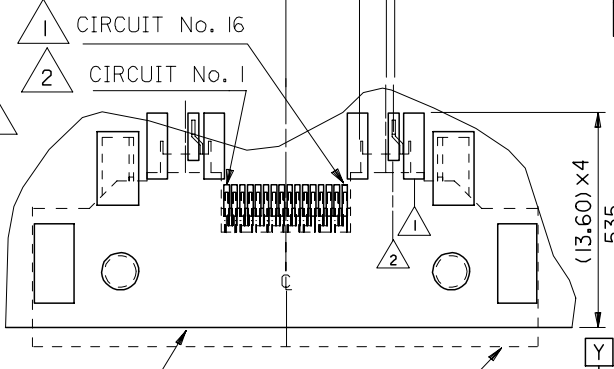
C

B

A



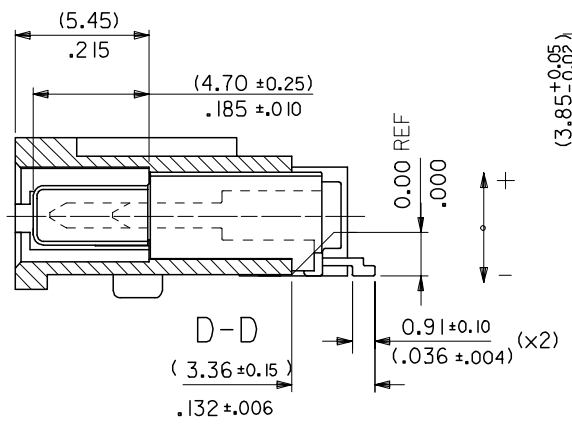
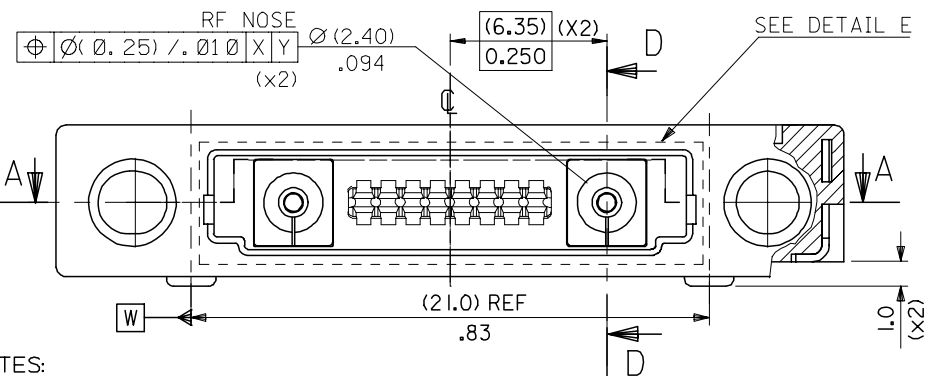
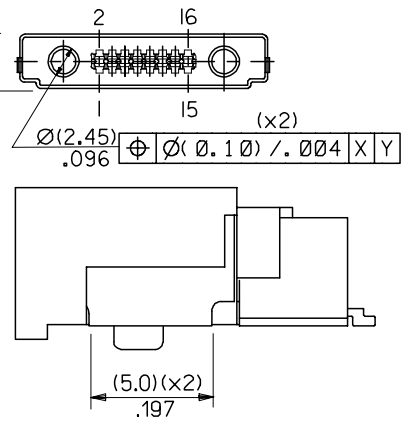
ITEM No	TAIL COPLANARITY	SEE NOTE
1 & 2	-0.075 +0.00 -0.10	3
3 & 4	0.00 +0.00 -0.125	3
5 & 6	0.00 +0.05 -0.10	3 & 4
7 (BEAM)	0.00 +0.00 -0.15	3
8 (SHIELD)	0.00 +0.00 -0.125	3



A-A

FRONT OF PCB CONNECTOR OUTLINE

DETAIL E



- NOTES:
- FOR MISSING DIMENSIONS AND NOTES SEE DRAWING SDA-90811-2121
 - COMPONENT PACKAGING :TO BE PACKED IN EMBOSSED TAPE SEE SDA-90811-9001 SH3
 - ALL SMT TAILS TO LIE WITHIN A COPLANARITY BAND OF (0.0)/.0 - (0.13)/.005 FROM EACH OTHER. ALL TAILS, EXCEPT RETENTION PADS ARE BELOW THE HOUSING.
 - RETENTION PAD COPLANARITY BAND IS (0.05)/.002 ABOVE THE HOUSING - (0.10)/.004 BELOW THE HOUSING.

COMPONENT	PCB PAD DIMENSION	QTY
OUTER CO-AX CONDUCTOR	(1.30)/.051 x (4.2)/.167 ⊕ (0.10) / .004 R	(x4)
CENTRE CO-AX CONDUCTOR	(0.70)/.028 x (3.0)/.118 ⊕ (0.10) / .004 R	(x2)

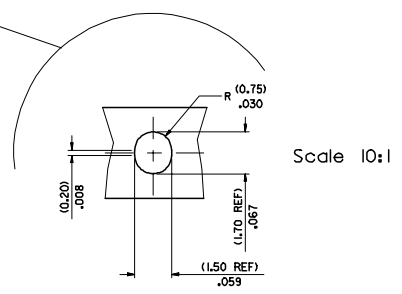
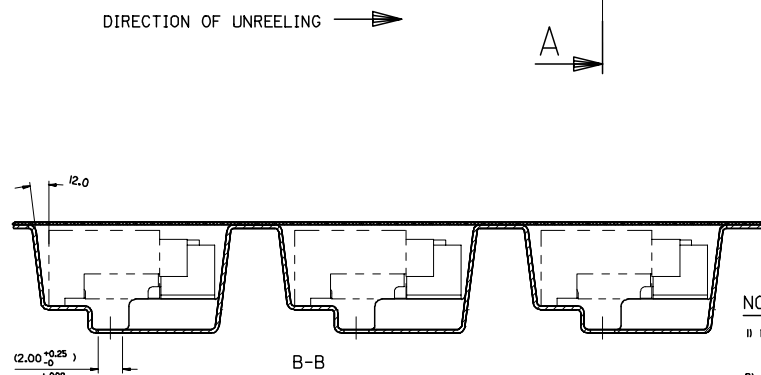
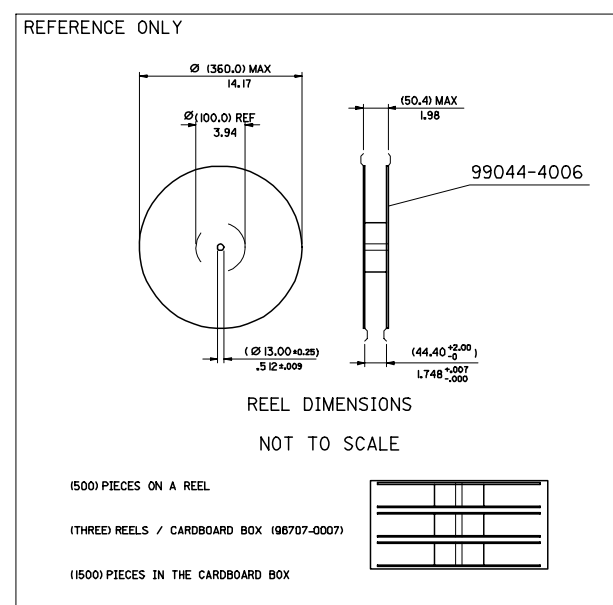
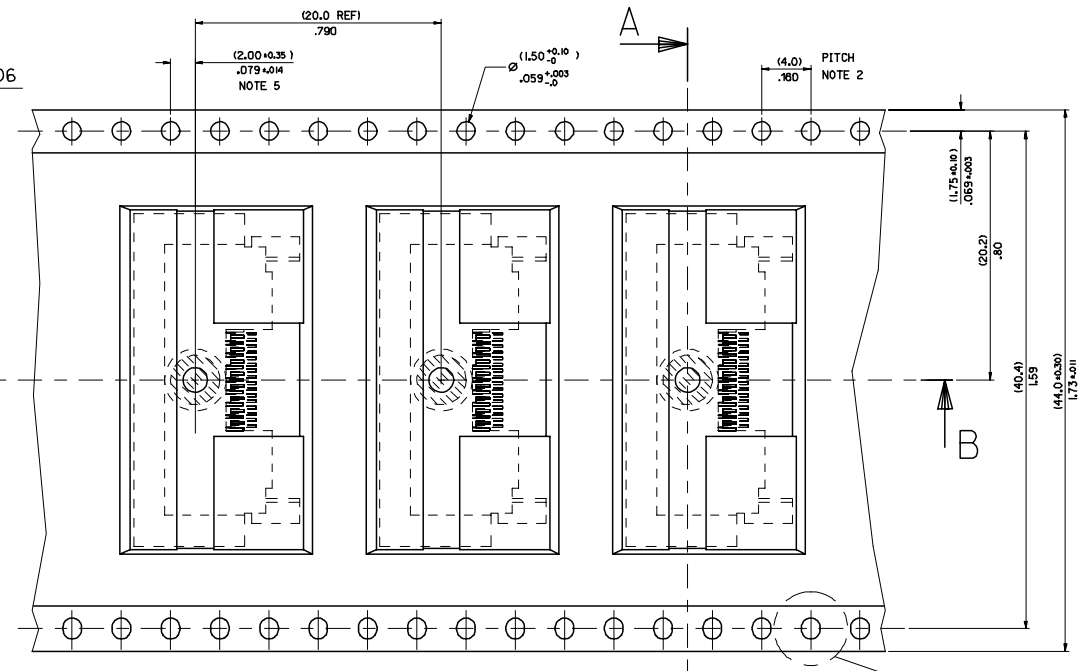
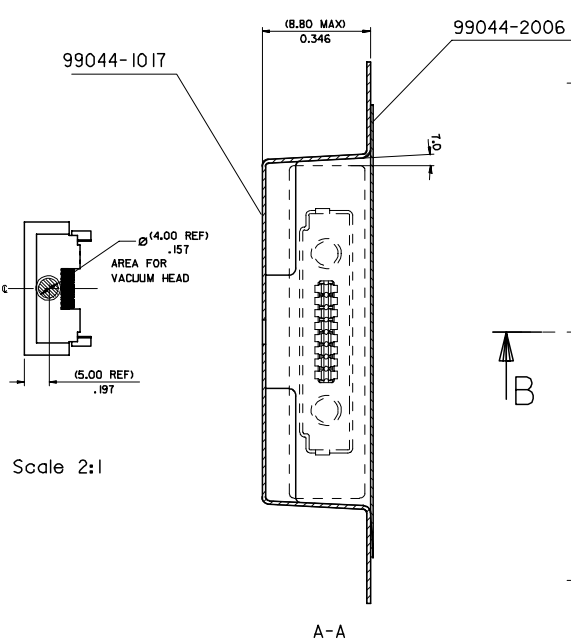
MODIFIED DIM 11	2006/02/03	QUALITY SYMBOLS
EC NO: E2005-1192	2006/02/06	▽=0
DRWN:FUGGAN	2006/02/15	∇=0
CHKD:		
APPR:EFULAN		
REV	DESCRIPTION	

GENERAL TOLERANCES (UNLESS SPECIFIED)	
mm	INCH
4 PLACES ± ---	± ---
3 PLACES ± ---	± ---
2 PLACES ± 0.05	± ---
1 PLACE ± 0.1	± ---
ANGULAR ± 2 °	

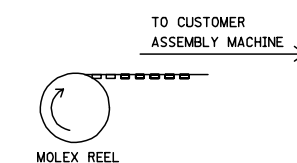
DIMENSION STYLE	
MM ONLY	
DRAWN BY	DATE
JDW	2002/06/26
CHECKED BY	DATE
JDW	2002/06/26
APPROVED BY	DATE
MW	2002/06/26
MATERIAL NO.	90811-2130

SCALE	DESIGN UNITS	THIRD ANGLE PROJECTION
5:1	METRIC	☉
TITLE		
1MM PITCH I/O RCPT 16CKT W/UNSWITCHED RF		
MOLEX MOLEX INCORPORATED		
DOCUMENT NO.	SDA-90811-2130	SHEET NO.
		1 OF 1
DRAFT WHERE APPLICABLE MUST REMAIN WITHIN DIMENSIONS		
THIS DRAWING CONTAINS INFORMATION THAT IS PROPRIETARY TO MOLEX INCORPORATED AND SHOULD NOT BE USED WITHOUT WRITTEN PERMISSION		

9 8 7 6 5 4 3 2 1



- NOTES:**
- MATERIAL :
CARRIER TAPE : VOLUME CONDUCTIVE POLYCARBONATE , (0.37) .014 REF THICK , BLACK
COVER TAPE : COLD SEAL POLYESTER , (0.06) .002 REF THICK , TRANSPARENT
 - PITCH TOLERANCE OVER ANY 10 PITCHES ±(0.2) .008
 - PEEL FORCE OF THE COVER TAPE IS 0.1N TO 1.0N
AT A MAXIMUM PEEL SPEED OF (300) 1.81mm/mIn ±10%
 - REFERENCE TO IEC 286-3 EXCEPT WHERE SPECIFIED



COMPONENT	DESCRIPTION
90811-2001	MOBILE PHONE I/O CONNECTOR

REV	DESCRIPTION	QUALITY SYMBOLS	GENERAL TOLERANCES (UNLESS SPECIFIED)		DIMENSION STYLE		SCALE	DESIGN UNITS	THIRD ANGLE PROJECTION
			MM	INCH	MM/IN	MM/IN			
1	UPDATED SHEET 3 ECC NG E2007-0458 2007/05/10 DRIVING DUGGAN 2007/05/10 CHKD APPROVED LUN 2007/05/10	▽=0 ▽=0	4 PLACES ±	±	MM/IN	MM/IN	S:1	METRIC	THIRD ANGLE PROJECTION
			3 PLACES ±	±					
			2 PLACES ±	±0.10					
			1 PLACE ±	±0.2					
			ANGULAR ± 5°						
			DRAFT WHERE APPLICABLE MUST REMAIN WITHIN DIMENSIONS						
			SIZE 1						
			THIS DRAWING CONTAINS INFORMATION THAT IS PROPRIETARY TO MOLEX INCORPORATED AND SHOULD NOT BE USED WITHOUT WRITTEN PERMISSION						

3	C
2	B
1	C

BLISTER PACKAGING FOR MOBILE PHONE HANDSET

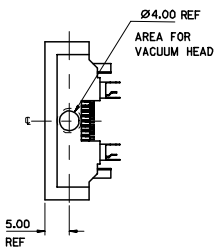
MOLEX INCORPORATED

SDA-90811-9001

SHEET NO. 1 OF 3

20 19 18 17 16 15 14 13 12 11 10 9 8 7 6 5 4 3 2 1

COMPONENT DETAIL
(W/UNSWITCHED RF)

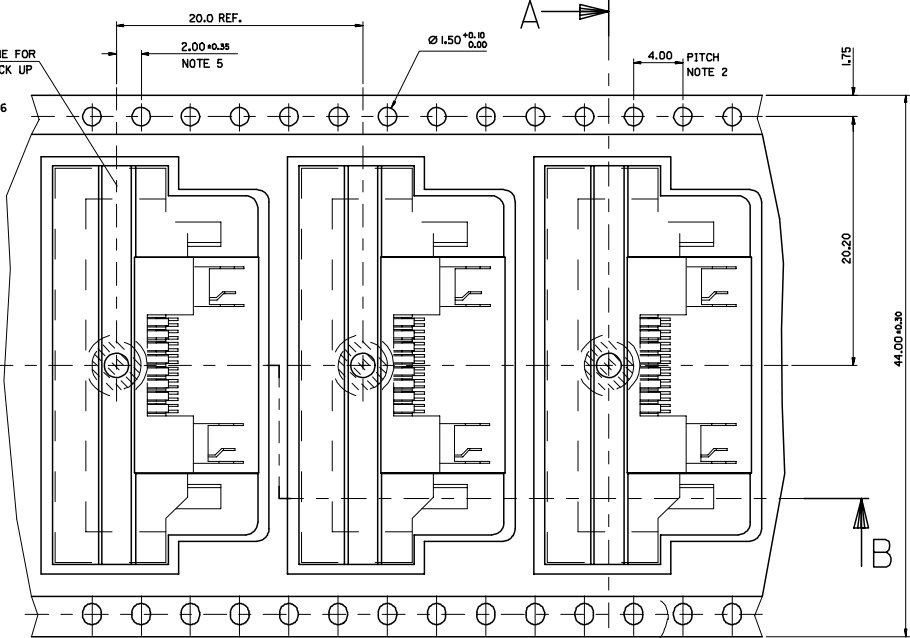


SCALE 2:1

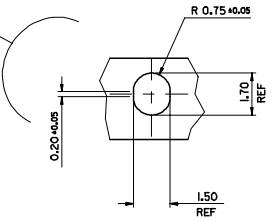
99044-1066

CENTRE LINE FOR VACUUM PICK UP

99044-5006

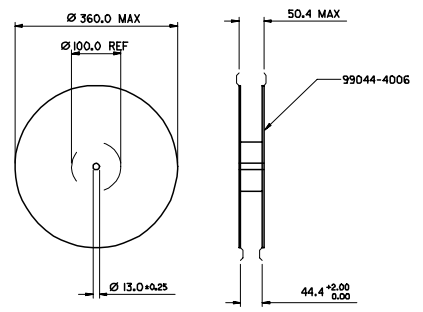


DIRECTION OF UNREELING



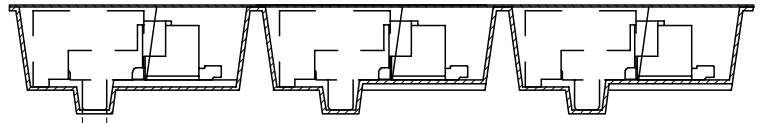
SCALE 10:1

REFERENCE ONLY

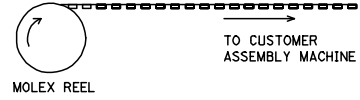


REEL DIMENSIONS
DO NOT SCALE

(400) PIECES / REEL (SUBJECT TO CHANGE)
(THREE) REELS / CARDBOARD BOX (96707-0007)
(1200) PIECES / CARDBOARD BOX (SUBJECT TO CHANGE)



B - B



MOLEX REEL

NOTES:

- MATERIAL :
CARRIER TAPE : VOLUME CONDUCTIVE POLYSTYRENE , 0.4 REF THICK , BLACK
COVER TAPE : COLD SEAL POLYESTER , 0.06 REF THICK, TRANSPARENT
- PITCH TOLERANCE OVER ANY 10 PITCHES ±0.2
- PEEL FORCE OF THE COVER TAPE IS 0.1N TO 1.0N
AT A MAXIMUM PEEL SPEED OF 300mm/min ±10%.
- REFERENCE TO IEC 286-3 EXCEPT WHERE NOTED

COMPONENT	DESCRIPTION
90811-2129	MOBILE PHONE I/O CONNECTOR
90811-2130	1mm Pitch I/O Rpt 16Ckt W/RF
90811-2131	1mm Pitch I/O Rpt 16Ckt W/O RF

ADDED PART NO ECHANGE 2007-0458 2007/05/08 DRIVING DUGGAN 2007/05/15 CHECKED APPRE-EFOLIAN 2007/05/16 REV	QUALITY SYMBOLS ▽=0 ▽=0	GENERAL TOLERANCES (UNLESS SPECIFIED) <table border="1"> <thead> <tr> <th></th> <th>mm</th> <th>INCH</th> </tr> </thead> <tbody> <tr> <td>4 PLACES ±</td> <td>---</td> <td>---</td> </tr> <tr> <td>3 PLACES ±</td> <td>---</td> <td>---</td> </tr> <tr> <td>2 PLACES ±</td> <td>0.10</td> <td>---</td> </tr> <tr> <td>1 PLACE ±</td> <td>0.2</td> <td>---</td> </tr> </tbody> </table> ANGULAR ± 5°		mm	INCH	4 PLACES ±	---	---	3 PLACES ±	---	---	2 PLACES ±	0.10	---	1 PLACE ±	0.2	---	DIMENSION STYLE MM ONLY	SCALE S:1	DESIGN UNITS METRIC	THIRD ANGLE PROJECTION
		mm	INCH																		
4 PLACES ±	---	---																			
3 PLACES ±	---	---																			
2 PLACES ±	0.10	---																			
1 PLACE ±	0.2	---																			
DRAWN BY T. MAHON 1998/06/16 CHECKED BY DBRENNAN 1998/06/16 APPROVED BY MILWHITE 1998/06/16	DATE 1998/06/16 DATE 1998/06/16 DATE 1998/06/16	TITLE BLISTER PACKAGING FOR MOBILE PHONE HANDSET	MATERIAL NO. SDA-90811-9001	DOCUMENT NO. SDA-90811-9001	SHEET NO. 3 OF 3																

DRAFT WHERE APPLICABLE MUST REMAIN WITHIN DIMENSIONS
 THIS DRAWING CONTAINS INFORMATION THAT IS PROPRIETARY TO MOLEX INCORPORATED AND SHOULD NOT BE USED WITHOUT WRITTEN PERMISSION

19 18 17 16 15 14 13 12 11 10 9 8 7 6 5 4 3 2 1