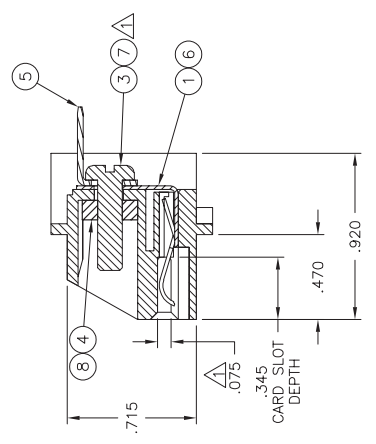
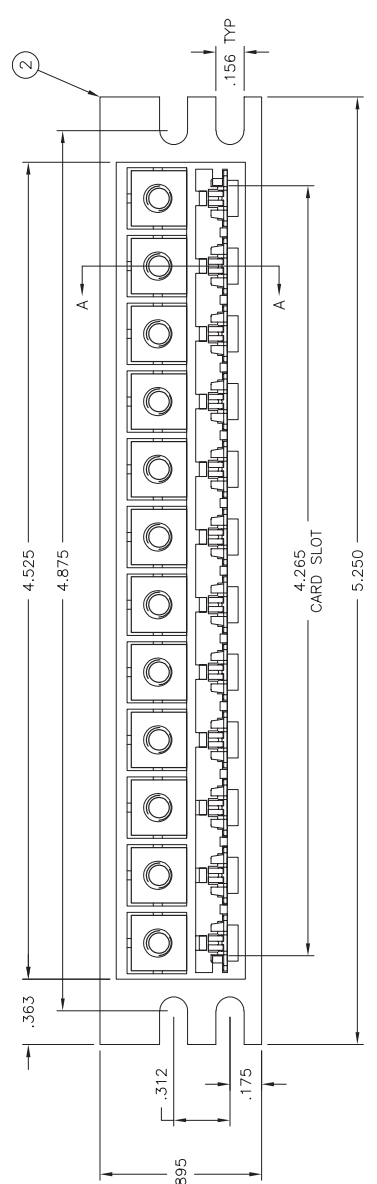
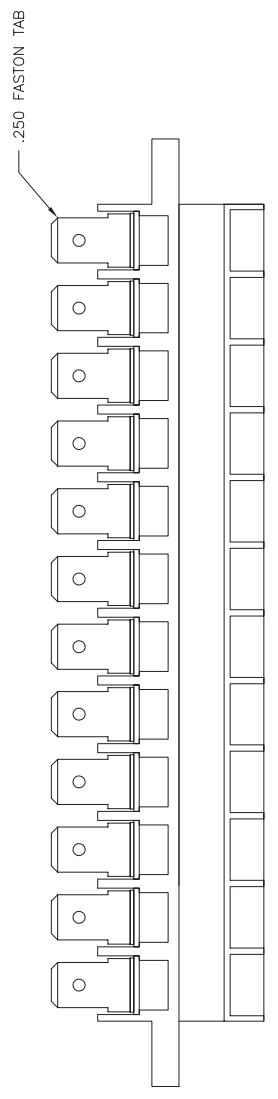
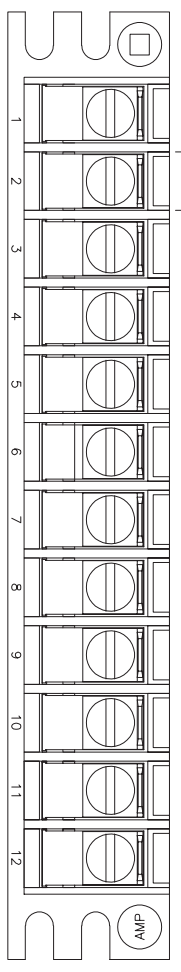


THIS DRAWING IS UNPUBLISHED.  
 © COPYRIGHT BY TYCO ELECTRONICS CORPORATION.  
 RELEASED FOR PUBLICATION  
 ALL RIGHTS RESERVED.

LOC	DIST	REV	DATE	UNL	APPD
FT	O	E	3/30/06	SS	DC
REVISIONS		DESCRIPTION			
E		REVISED PER ECO-08-0023			

ACCEPTS .062±.007 THK PCB.  
 2. MAX ALLOWABLE BOW TO BE .003 PER INCH OF HOUSING.



ITEM NO.	DESCRIPTION	MATERIAL & FINISH
8	STEEL, ZINC W/ NON-HEXAVALENT CHROMATE	
7	STEEL, ZINC W/ NON-HEXAVALENT CHROMATE	
6	.020 PHOS BRZ, TIN PLATED	
5	.020 PHOS BRZ, TIN PLATED	
4	STEEL, ZINC W/ HEXAVALENT CHROMATE	
3	STEEL, ZINC W/ HEXAVALENT CHROMATE	
2	POLYCARBONATE, COLOR: GRAY	
1	.020 PHOS BRZ, TIN-LEAD PLATED	

THIS DRAWING IS A CONTROLLED DOCUMENT.		UNL	SCHLEGE	28MWR206
DIMENSIONS: INCHES		CHK		
TOLERANCES UNLESS SPECIFIED:		APPD		
Ø	PLC	PRODUCT SPEC		
±	.02	APPLICATION SPEC		
±	.005	WEIGHT		
±	.0025/30°	CUSTOMER DRAWING		
MATERIAL		SIZE	QAGE CODE	DRAWING NO
		FINISH	A2	00779
		RESTRICTED TO	©=350883	
		SCALE	2:1	SHEET 1 of 1

Tyco Electronics Corporation Harrisburg, PA 17105-3608	
12 CIRCUIT MULTIPLE TAP EDGE CONNECTOR ASSY	
ITEM NO.	8