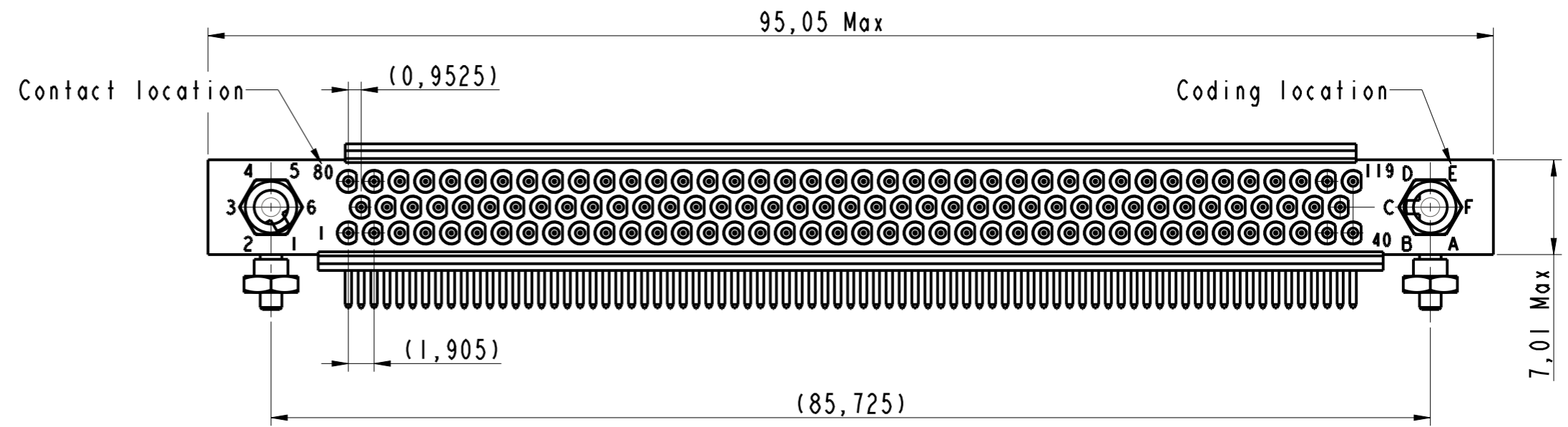
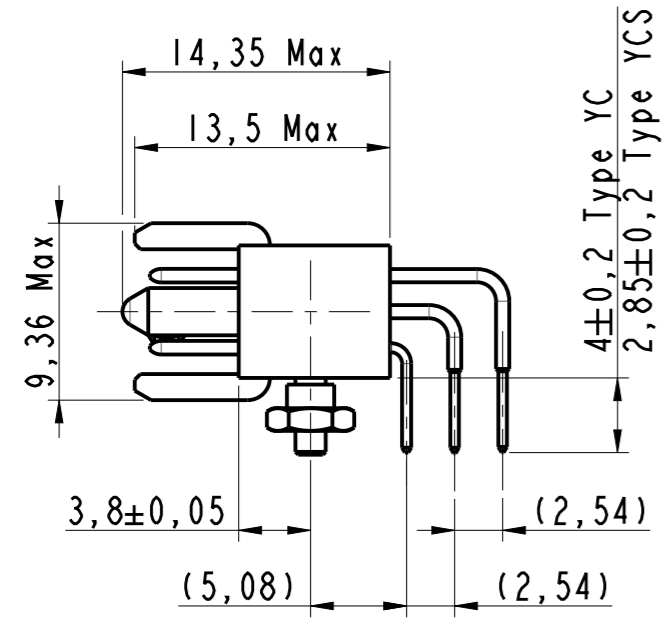
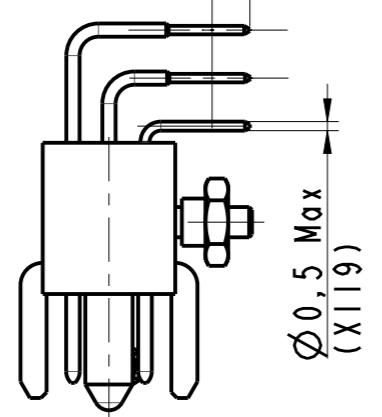
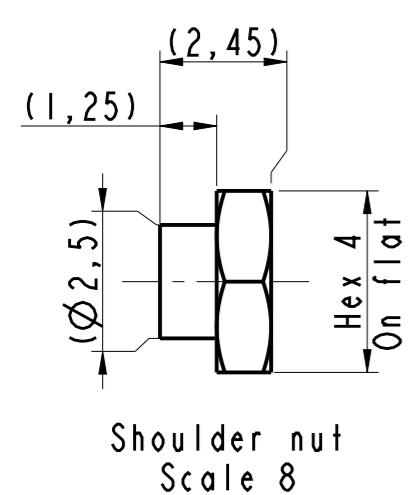


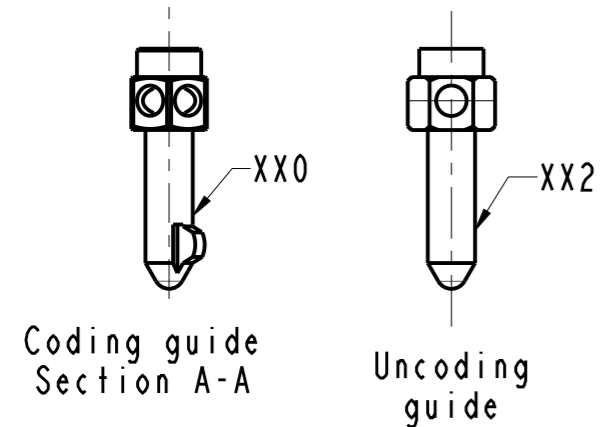
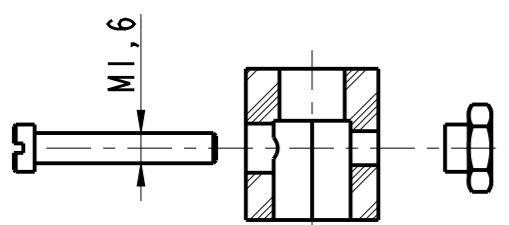
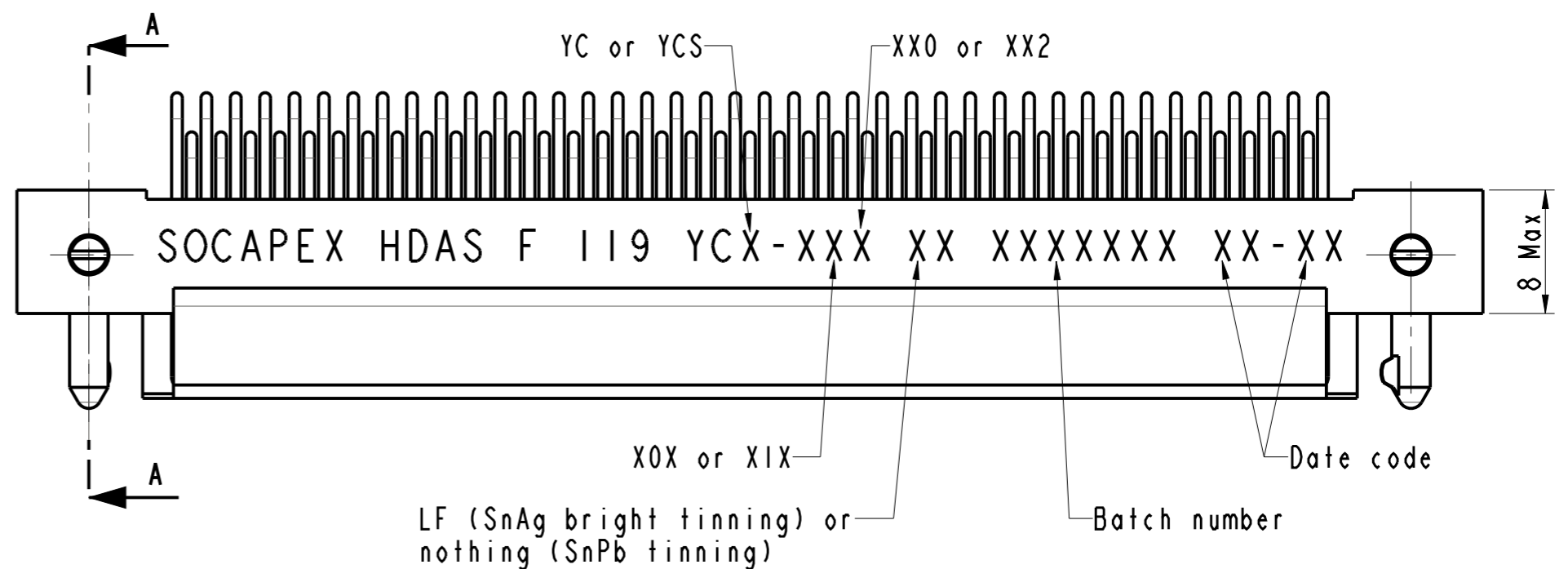
IN THE CONSTANT PURPOSE OF IMPROVING ITS PRODUCTS, Amphenol Socapex RESERVES THE RIGHT TO MODIFY ANY DIMENSION OR CHARACTERISTICS. FM.NPD.0036.THYZE.PUNE rev C



Tinning: deviation XIX
 2 Min for YCS
 3 Min for YC



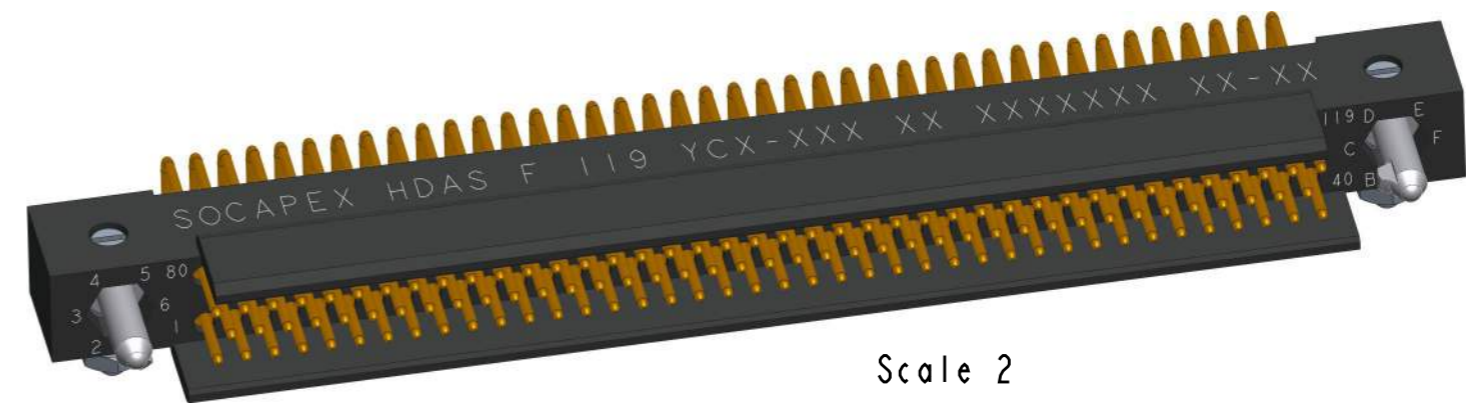
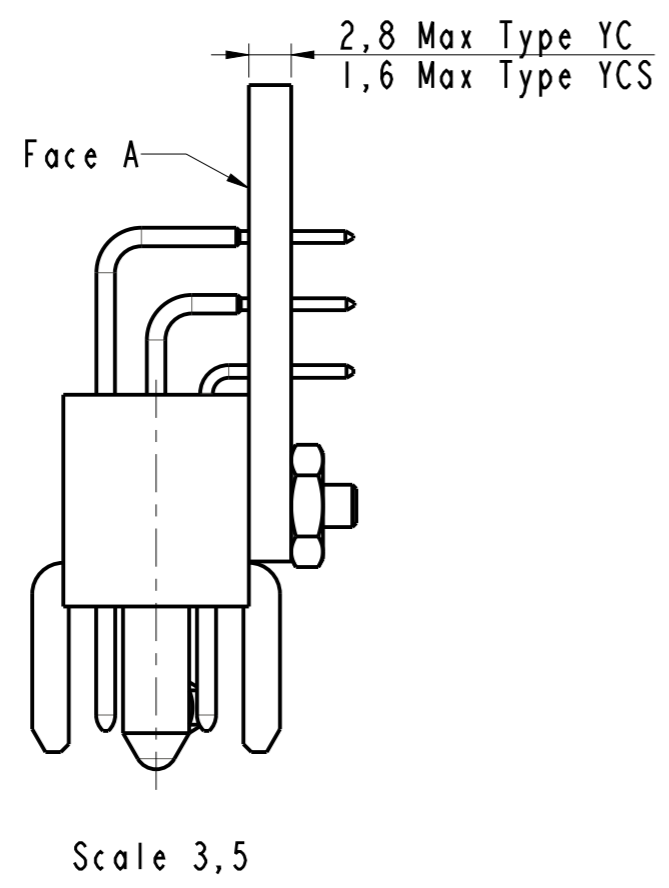
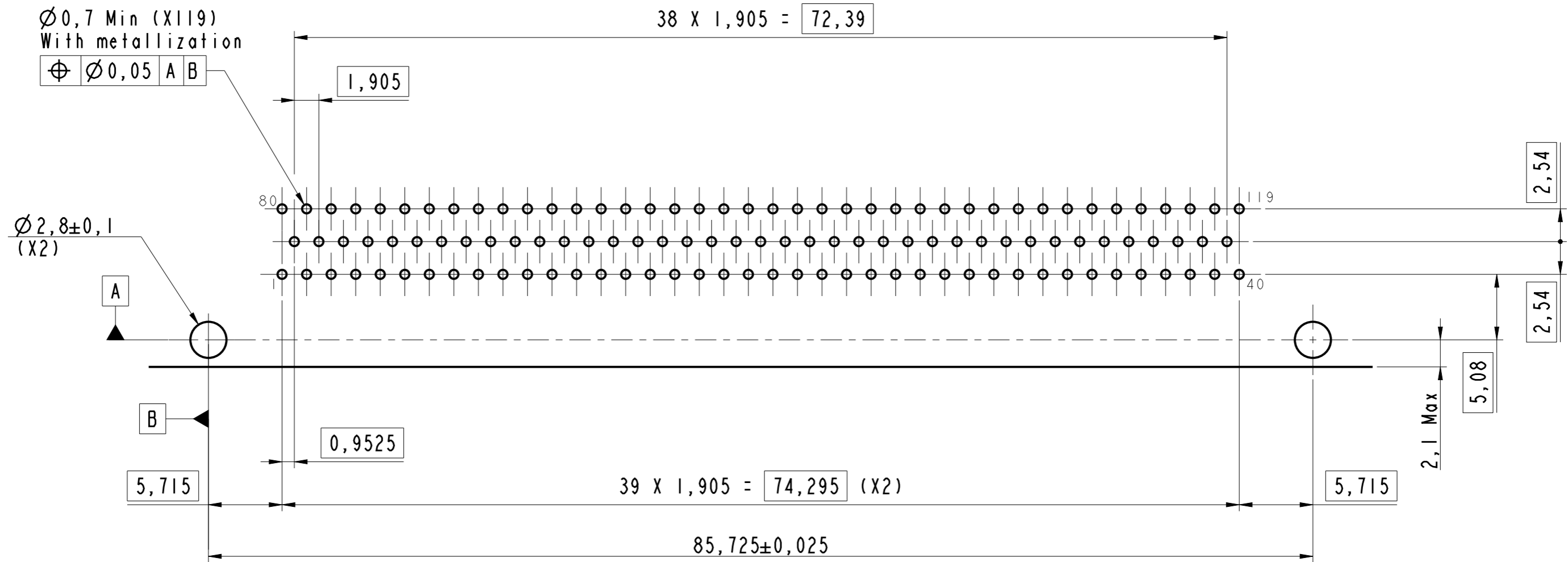
Rows
c
b
a



- Notes:
- Part: HDAS F 119 YCX-XXX XX
 - External dimensions for a male plug with 119 signal contacts type YCX
 - Connector delivered with fittings not assembled, coupling torque : 0,15 Nm
 - Standard OXX : Nickel plated over brass fittings.
Deviation IXX : Passivated stainless steel fittings.
 - Standard XOX : Contacts gold plated (RoHS)
Deviation XIX : Contacts tail Hot dip tinned SnPb (non RoHS) or SnAg (RoHS)

<h1>HDAS F 119 YCX-XXX XX</h1>			
DRAWN BY : S Satpute	UPDATED BY: S Satpute	LAST APPROVED BY: T Carrier	
ALL DIMENSIONS ARE IN MM	AMPHENOL SOCAPEX	ORIGINAL DRAWING DATE : 03/09/2019	CONFIGURATION DATA ARE AVAILABLE IN PDM
SCALE : 2,5		REV : D	PAGE : 1/2
B.P. 29 74311 THYZE CEDEX		169-PLC-1325-00	

PCB layout Face A



HDAS F 119 YCX-XXX XX

DRAWN BY : S Satpute		UPDATED BY : S Satpute		LAST APPROVED BY : T Carrier	
ALL DIMENSIONS ARE IN MM	AMPHENOL SOCAPEX			ORIGINAL DRAWING DATE : 03/09/2019	CONFIGURATION DATA ARE AVAILABLE IN PDM
				REV : D	PAGE : 2/2
SCALE : 3	B.P. 29 74311 THYEZ CEDEX			169-PLC-1325-00	

IN THE CONSTANT PURPOSE OF IMPROVING ITS PRODUCTS, Amphenol Socapex RESERVES THE RIGHT TO MODIFY ANY DIMENSION OR CHARACTERISTICS.
 FM.NPD.0036.THYEZ.PUNE rev C