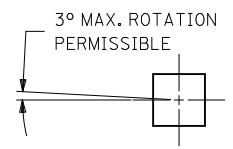
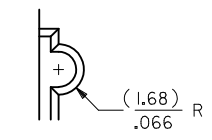


| CKT. SIZE | PART NUMBER | ENG. NUMBER SDA-70204- | DIM. "A" |       | DIM. "B" |       | DIM. "C" |       |
|-----------|-------------|------------------------|----------|-------|----------|-------|----------|-------|
|           |             |                        | MM       | IN.   | MM       | IN.   | MM       | IN.   |
| 08        | 25-02-2008  | 0387                   | 7,62     | .300  | 17,78    | .700  | 20,32    | .800  |
| 10        | 25-02-2010  | 0388                   | 10,16    | .400  | 20,32    | .800  | 22,86    | .900  |
| 12        | 25-02-2012  | 0389                   | 12,70    | .500  | 22,86    | .900  | 25,40    | 1.000 |
| 14        | 25-02-2014  | 0390                   | 15,24    | .600  | 25,40    | 1.000 | 27,94    | 1.100 |
| 16        | 25-02-2016  | 0391                   | 17,78    | .700  | 27,94    | 1.100 | 30,48    | 1.200 |
| 18        | 25-02-2018  | 0392                   | 20,32    | .800  | 30,48    | 1.200 | 33,02    | 1.300 |
| 20        | 25-02-2020  | 0393                   | 22,86    | .900  | 33,02    | 1.300 | 35,56    | 1.400 |
| 22        | 25-02-2022  | 0394                   | 25,40    | 1.000 | 35,56    | 1.400 | 38,10    | 1.500 |
| 24        | 25-02-2024  | 0395                   | 27,94    | 1.100 | 38,10    | 1.500 | 40,64    | 1.600 |
| 26        | 25-02-2026  | 0396                   | 30,48    | 1.200 | 40,64    | 1.600 | 43,10    | 1.700 |
| 28        | 25-02-2028  | 0397                   | 33,02    | 1.300 | 43,10    | 1.700 | 45,72    | 1.800 |
| 30        | 25-02-2030  | 0398                   | 35,56    | 1.400 | 45,72    | 1.800 | 48,26    | 1.900 |
| 32        | 25-02-2032  | 0399                   | 38,10    | 1.500 | 48,26    | 1.900 | 50,80    | 2.000 |
| 34        | 25-02-2034  | 0400                   | 40,64    | 1.600 | 50,80    | 2.000 | 53,34    | 2.100 |
| 36        | 25-02-2036  | 0401                   | 43,10    | 1.700 | 53,34    | 2.100 | 55,88    | 2.200 |
| 38        | 25-02-2038  | 0402                   | 45,72    | 1.800 | 55,88    | 2.200 | 58,42    | 2.300 |
| 40        | 25-02-2040  | 0403                   | 48,26    | 1.900 | 58,42    | 2.300 | 60,96    | 2.400 |

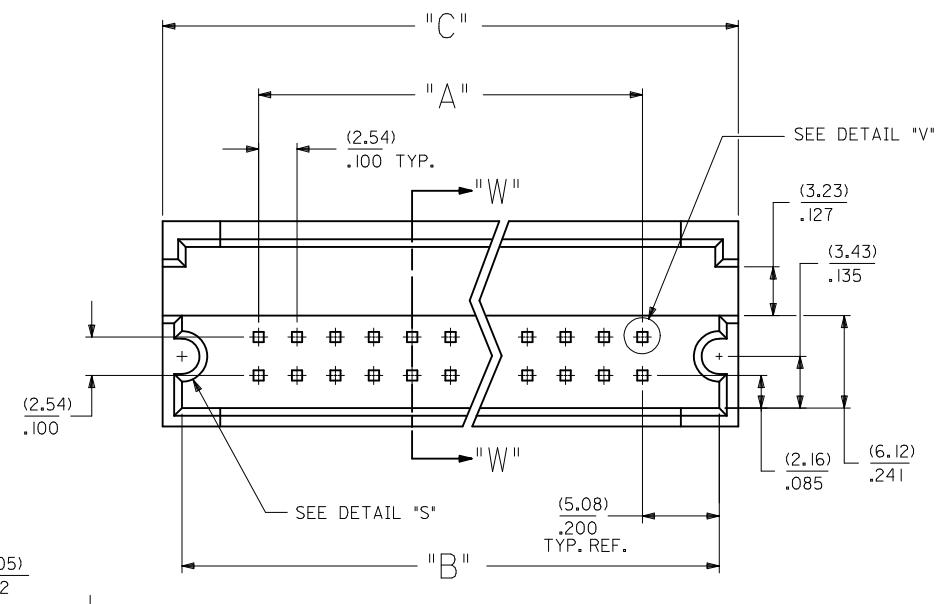
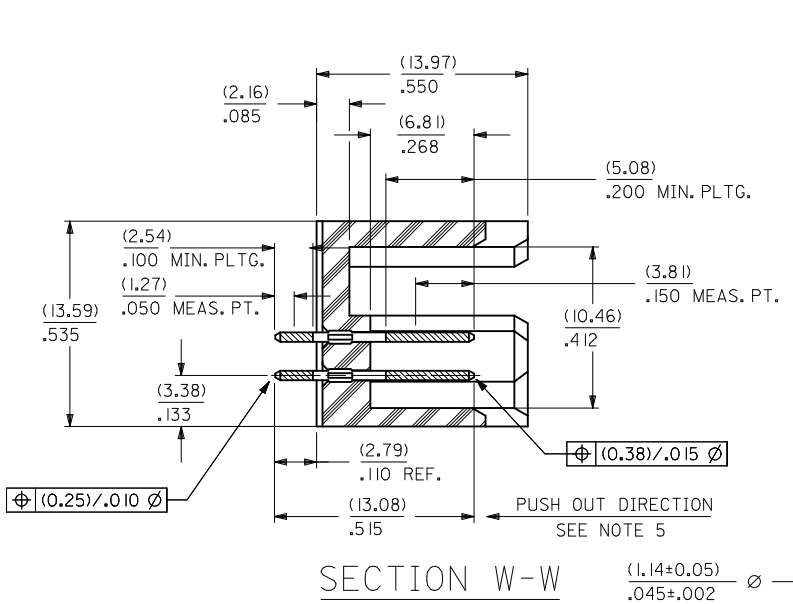
| CKT. SIZE | PART NUMBER | ENG. NUMBER SDA-70204- | DIM. "A" |       | DIM. "B" |       | DIM. "C" |       |
|-----------|-------------|------------------------|----------|-------|----------|-------|----------|-------|
|           |             |                        | MM       | IN.   | MM       | IN.   | MM       | IN.   |
| 42        | 25-02-2042  | 0404                   | 50,80    | 2.000 | 60,96    | 2.400 | 63,50    | 2.500 |
| 44        | 25-02-2044  | 0405                   | 53,34    | 2.100 | 63,50    | 2.500 | 66,04    | 2.600 |
| 46        | 25-02-2046  | 0406                   | 55,88    | 2.200 | 66,04    | 2.600 | 68,58    | 2.700 |
| 48        | 25-02-2048  | 0407                   | 58,42    | 2.300 | 68,58    | 2.700 | 71,12    | 2.800 |
| 50        | 25-02-2050  | 0408                   | 60,96    | 2.400 | 71,12    | 2.800 | 73,66    | 2.900 |
| 52        | 25-02-2052  | 0409                   | 63,50    | 2.500 | 73,66    | 2.900 | 76,20    | 3.000 |
| 54        | 25-02-2054  | 0410                   | 66,04    | 2.600 | 76,20    | 3.000 | 78,74    | 3.100 |
| 56        | 25-02-2056  | 0411                   | 68,58    | 2.700 | 78,74    | 3.100 | 81,28    | 3.200 |
| 58        | 25-02-2058  | 0412                   | 71,12    | 2.800 | 81,28    | 3.200 | 83,82    | 3.300 |
| 60        | 25-02-2060  | 0413                   | 73,66    | 2.900 | 83,82    | 3.300 | 86,36    | 3.400 |
| 62        | 25-02-2062  | 0414                   | 76,20    | 3.000 | 86,36    | 3.400 | 88,90    | 3.500 |
| 64        | 25-02-2064  | 0415                   | 78,74    | 3.100 | 88,90    | 3.500 | 91,44    | 3.600 |
| 66        | 25-02-2066  | 0416                   | 81,28    | 3.200 | 91,44    | 3.600 | 93,98    | 3.700 |
| 68        | 25-02-2068  | 0417                   | 83,82    | 3.300 | 93,98    | 3.700 | 96,52    | 3.800 |
| 70        | 25-02-2070  | 0418                   | 86,36    | 3.400 | 96,52    | 3.800 | 99,06    | 3.900 |
| 72        | 25-02-2072  | 0419                   | 88,90    | 3.500 | 99,06    | 3.900 | 101,60   | 4.000 |



**DETAIL "V"**  
SCALE = 20:1



**DETAIL "S"**



RECOMMENDED P.C. BOARD HOLE LAYOUT

- NOTES:  
 1. WAFER MATERIAL: GLASS FILLED NYLON; COLOR: BLACK  
 2. PIN MATERIAL: COPPER ALLOY  
 3. PIN PLATING:  
 OVERALL: 150 MICRONS MINIMUM TIN  
 OVER NICKEL UNDERPLATE  
 4. PINS MUST MEET SOLDERABILITY SPEC. NO. 152  
 5. PIN PUSH-OUT FORCE (1.81 KG)/4 LBS MINIMUM  
 6. REFER TO P.S. NO. 70204  
 7. STANDARD PACKAGING PER: PK-70873-0070

| REV | DESCRIPTION    | DATE       | APPROVED |
|-----|----------------|------------|----------|
| 1   | DRINKINS BARRA | 2011/06/27 |          |
|     | CHKD: MORGAN   |            |          |
|     | APPR: MILLER   | 2011/07/07 |          |

| QUALITY SYMBOLS | GENERAL TOLERANCES (UNLESS SPECIFIED) |
|-----------------|---------------------------------------|
| ▽=0             | mm INCH                               |
| ▽=0             | 4 PLACES ± --- ± ---                  |
| ▽=0             | 3 PLACES ± --- ± .010                 |
|                 | 2 PLACES ± 0.25 ± ---                 |
|                 | 1 PLACE ± --- ± ---                   |
|                 | ANGULAR ±1/2°                         |

| DIMENSION STYLE |            | SCALE  | DESIGN UNITS | THIRD ANGLE PROJECTION |
|-----------------|------------|--|--------------|------------------------|
| MM/IN           |            | 4:1  | INCH         |                        |
| DRAWN BY        | DATE       | TITLE  |              |                        |
| JAS             | 1986/05/20 | SHROUDED HEADER DUAL ROW W/PCB SLOTS & GUIDE EARS .100 GRID, .025 SQ PIN |              |                        |
| CHECKED BY      | DATE       | MOLEX MOLEX INCORPORATED   |              |                        |
| EIK             | 1986/05/20 |  |              |                        |
| APPROVED BY     | DATE       | DOCUMENT NO.   |              |                        |
| WAZ             | 1986/05/20 | SDA-70204-0385-0448  |              |                        |
| MATERIAL NO.    | SIZE       | SHEET NO.  |              |                        |
| SEE TABLE       | C          | 1 OF 1   |              |                        |

THIS DRAWING CONTAINS INFORMATION THAT IS PROPRIETARY TO MOLEX INCORPORATED AND SHOULD NOT BE USED WITHOUT WRITTEN PERMISSION