

ITEM	PART#	DESCRIPTION	QTY	UOM
A	510210200	PicoBlade1.25 Rec Hsg 2P	1	PC
B	500588000	PicoBlade1.25 Crimp Rec Term Chain Tin	2	PC
C	--	Blank label 12.7x35.5mm (WHT:12.7mm) HF	1	PC
D	510470200	PicoBlade1.25 Plug Hsg 2P	1	PC
E	501338000	PicoBlade1.25 Crimp Plug Term Chain	2	PC

FROM	TO	DESCRIPTION	COLOR
A1	D2	CABLE 28 AWG UL 1061 BLACK	BLACK
A2	D1	CABLE 28 AWG UL 1061 BLACK	BLACK

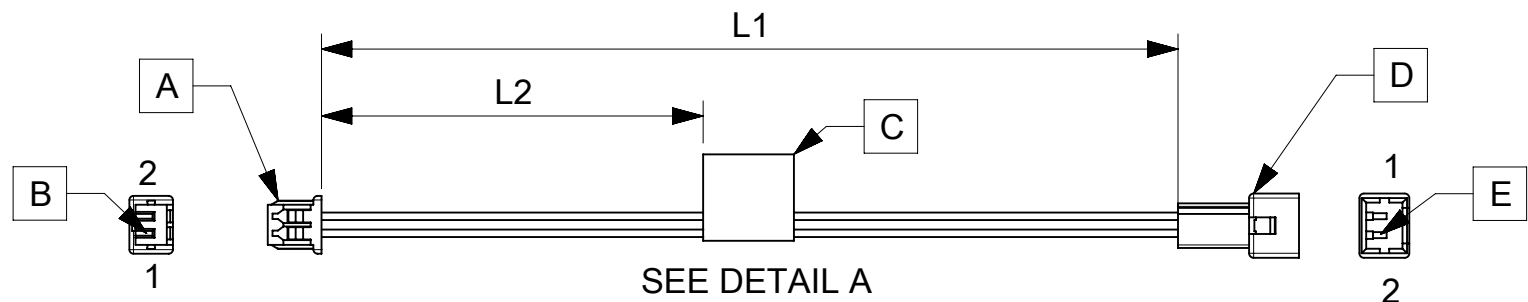
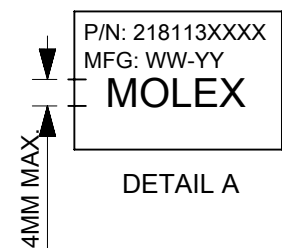


TABLE			
PART NUMBER	L1	L2 (REF)	TITLE
2181130200	75±5	30	2 CIRCUIT PICOBLADE R:P CABLE 75MM
2181130201	150±6	70	2 CIRCUIT PICOBLADE R:P CABLE 150MM
2181130202	225±6	105	2 CIRCUIT PICOBLADE R:P CABLE 225MM
2181130203	300±8	145	2 CIRCUIT PICOBLADE R:P CABLE 300MM
2181130204	425±8	205	2 CIRCUIT PICOBLADE R:P CABLE 425MM



- NOTES
1. Cable assembly to be tested 100% for continuity and polarity.
 2. Connector view shown is from mating side.
 3. Label text must be 2mm max. in height with Arial font.
 4. Label must be wrapped in flag type on the cables.

REVISION			
DATE	REV	DESCRIPTION	CHANGER
04/03/2021	A	INITIAL RELEASE	ARAJU

DOCUMENT STATUS	P1	RELEASE DATE	2021/03/26	04:03:46
-----------------	----	--------------	------------	----------

FUNCTIONAL SYMBOLS $\nabla_A = 0$ $\nabla_E = 0$ $\nabla_P = 0$	THIS DRAWING CONTAINS INFORMATION THAT IS PROPRIETARY TO MOLEX ELECTRONIC TECHNOLOGIES, LLC AND SHOULD NOT BE USED WITHOUT WRITTEN PERMISSION		SCALE mm NTS		CURRENT REV DESC:	
	GENERAL TOLERANCES (UNLESS SPECIFIED)		EC NO: 659320 DRWN: ARAJU CHK'D: RDESAI01 APPR: RDESAI01		2021/03/04 2021/03/26 2021/03/26	
	ANGULAR TOL ± °		INITIAL REVISION:		DOCUMENT NUMBER 2181130200	
	4 PLACES ±		DRWN: ARAJU APPR: RDESAI01		DOC TYPE PSD DOC PART 000 REVISION A	
DIVISIONAL SYMBOLS		3 PLACES ±		2021/03/04		
2 PLACES ±		1 PLACE ±		2021/03/26		
1 PLACE ±		0 PLACES ±		MATERIAL NUMBER SEE TABLE		
DRAFT WHERE APPLICABLE MUST REMAIN WITHIN DIMENSIONS		THIRD ANGLE PROJECTION		CUSTOMER GENERAL MARKET		
4 PLACES ±		DRAWING A4-SIZE		SHEET NUMBER 1 OF 1		
3 PLACES ±		SERIES 218113				