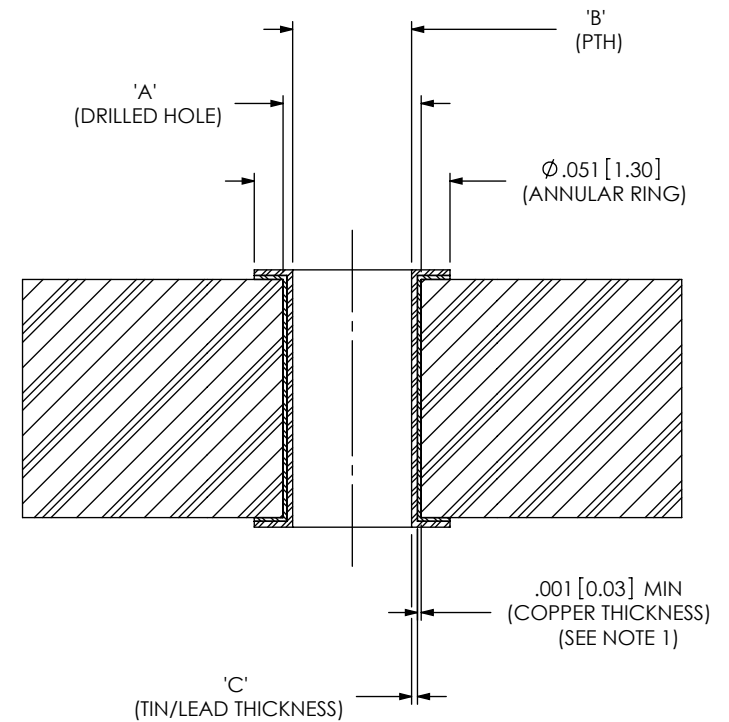
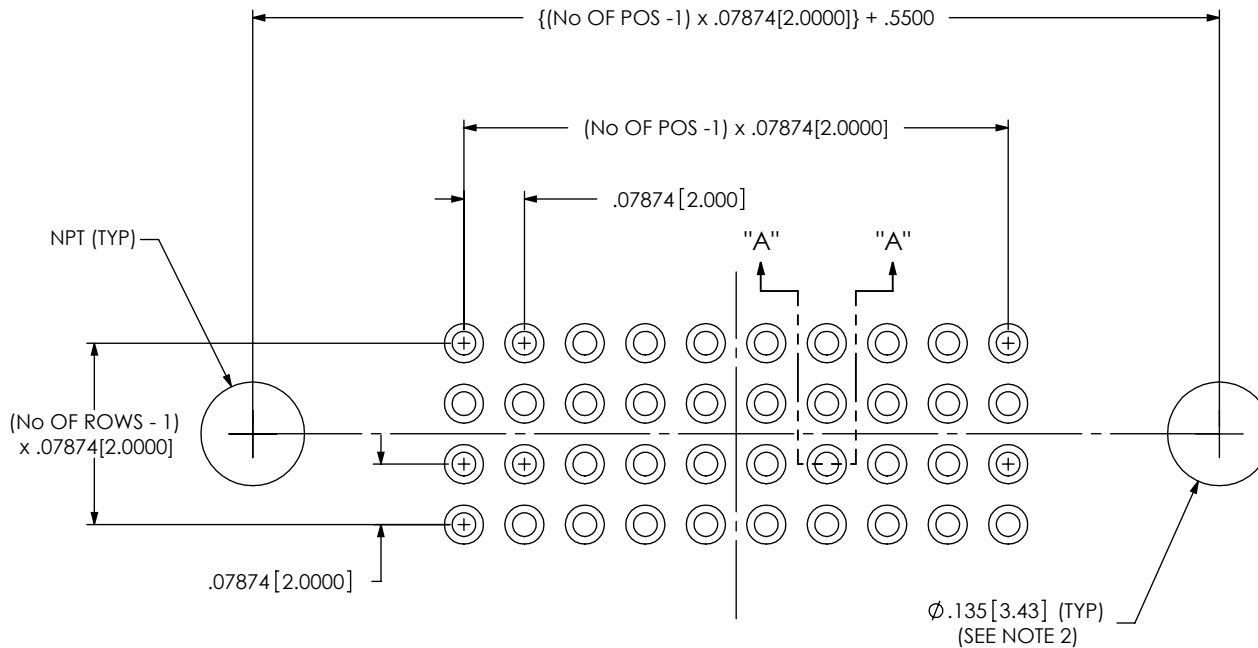


G	SS	D DECKER
10/17/2007	ECN-81843	



- NOTE:
1. MAX HARDNESS OF COPPER LAYER: 150 KNOOP.
 2. ALL DIMENSIONS ARE SYMMETRICAL ABOUT CENTERLINE WITHIN .002 UNLESS OTHERWISE STATED.
 3. CONTACT SAMTEC FOR INSERTION TOOLING: P/N S-11297-XX.

SECTION "A"- "A"
SCALE 20 : 1

G

TABLE 1

	A	B	C
G HASL	0.035	.030±.002	0.005 MAX
GOLD	0.035	.032±.002	N/A
SILVER	0.035	.032±.002	N/A
G TIN	0.035	.032±.002	N/A

PROPRIETARY NOTE
THIS DOCUMENT CONTAINS INFORMATION CONFIDENTIAL AND PROPRIETARY TO SAMTEC, INC. AND SHALL NOT BE REPRODUCED OR TRANSFERRED TO OTHER DOCUMENTS OR DISCLOSED TO OTHERS OR USED FOR ANY PURPOSE OTHER THAN THAT WHICH IT WAS OBTAINED WITHOUT THE EXPRESSED WRITTEN CONSENT OF SAMTEC, INC.

samtec
520 PARK EAST BLVD, NEW ALBANY, IN 47150
PHONE: 812-944-6733 FAX: 812-948-5047
e-Mail: info@SAMTEC.com code: 55322