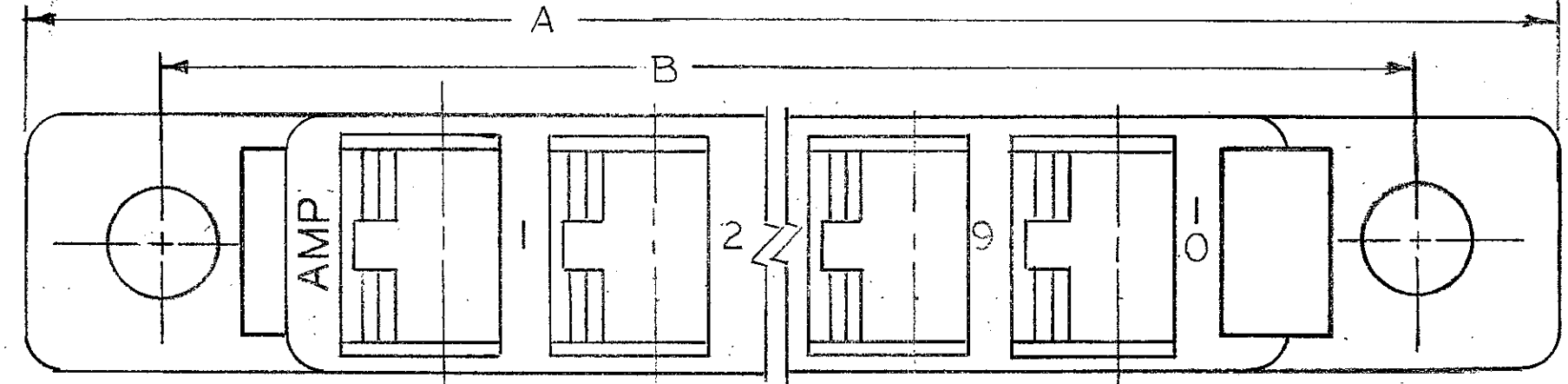
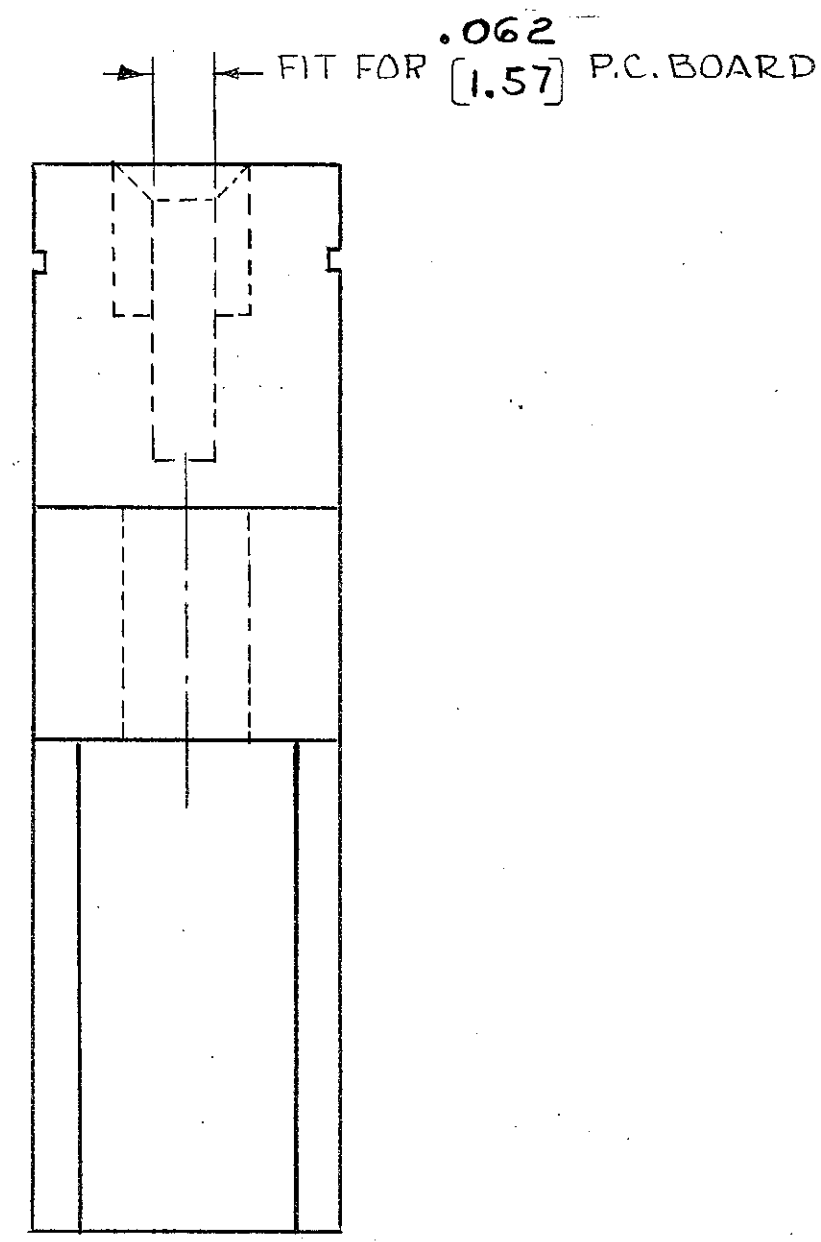
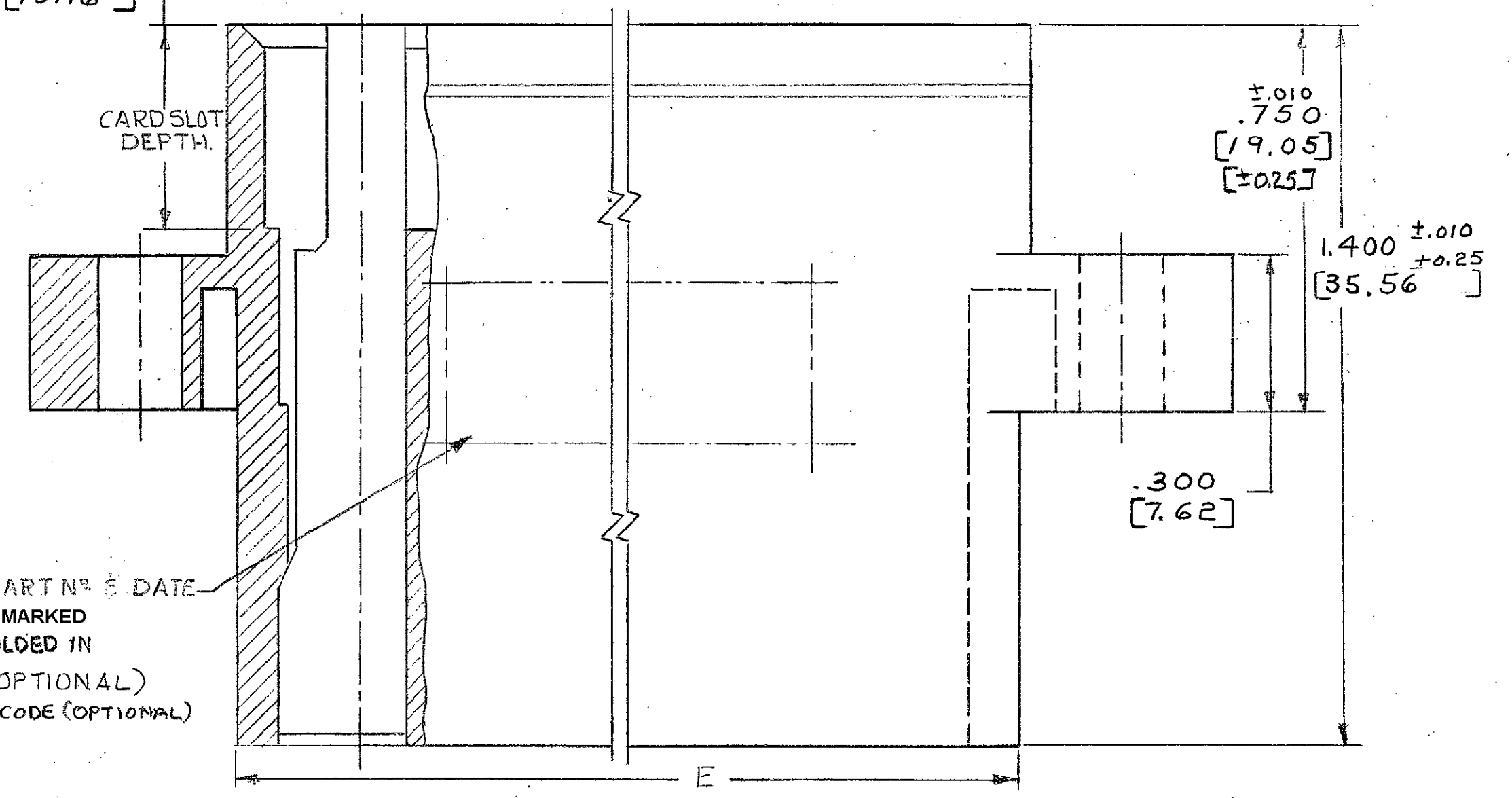
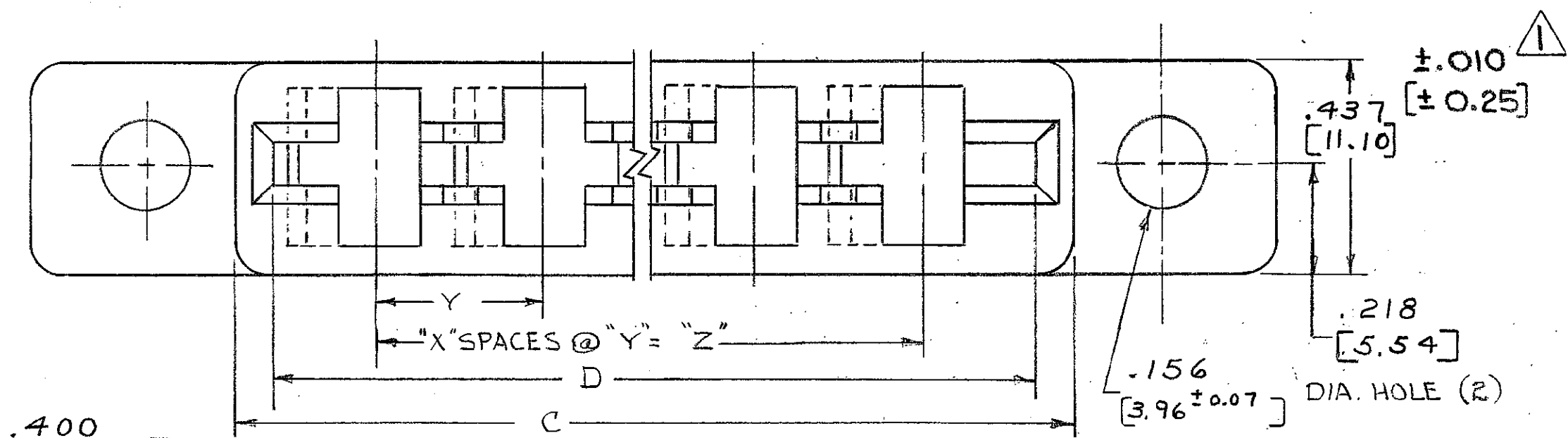



© COPYRIGHT 1975 BY AMP INCORPORATED, HARRISBURG, PA. ALL INTERNATIONAL RIGHTS RESERVED. AMP INCORPORATED PRODUCTS COVERED BY U. S. AND FOREIGN PATENTS AND/OR PATENTS PENDING.

REVISIONS						
P	F	ZONE	LTR	DESCRIPTION	DATE	APPROVED
✓			A	REVISED <i>m.s. 4570</i>	10-75	DR
✓			B	REVISED <i>AS 5336</i>	5-78	M.S.
✓			B1	REVISED <i>6098 m.s.</i>	6-79	
✓			C	REVISED PER ECN 8454 <i>ZPL</i>	5-83	
✓			D	REVISED PER ECN ADO188 <i>102</i>	5/11/89	R.f.
✓			D1	REV PER AD1111	AL 2/18/86	
✓			D2	REVISED PER AD1276	4/18/86	CP
✓			E	085-8 PER ECN 0655-93	6-93	RAC
✓			F	REV. PER 0010-1154-95	11-95	PG.
			G	REV PER 0652-0070-99	4JUN99	MM
			H	REV PER EC 0G3C-233-01	08OCT01	MM
			H1	REVISED PER ECO-10-000445	09JAN10	AEG



UNLESS OTHERWISE SPECIFIED DIMENSIONS ARE IN M. M. TOLERANCES ON: DECIMALS \pm 0.127 ANGLES \pm [0.05]	CONTRACT NO	 AMP INCORPORATED Harrisburg, Pa.
	MATERIAL GLASS FILLED POLYESTER COLOR- NATURAL (WHITE)	
FINISH <i>---</i>	NAME HOUSING, HIGH-CURRENT CONNECTOR.	SIZE CODE IDENT NO DRAWING NO C 00779 530521
	OTHER APPD	SCALE 4:1 SHEET 1 OF 2


530521

© COPYRIGHT 1975 BY AMP INCORPORATED, HARRISBURG, PA.
 ALL INTERNATIONAL RIGHTS RESERVED. AMP INCORPORATED PRODUCTS
 COVERED BY U.S. AND FOREIGN PATENTS AND/OR PATENTS PENDING.

REVISIONS					
NO	ZONE	LTR	DESCRIPTION	DATE	APPROVED
SEE SHEET 1 of 2					

PART NO	NO POS.	± 0.015	± 0.007	C	D	± 0.010	X	Y	Z	INCH M M TYP.	OBSOLETE
		± 0.381 A	± 0.177 B			± 0.254 E					
530521-1	2	1.660 [42.16]	1.226 [31.14]	.852 [21.64]	.712 [18.08]	.802 [20.37]	1	.312 [7.92]	.312 [7.92]		
530521-2	3	1.972 [50.09]	1.538 [39.06]	1.164 [29.56]	1.024 [26.00]	1.114 [28.29]	2		.624 [15.84]		OBSOLETE
530521-3	4	2.284 [58.01]	1.850 [46.99]	1.476 [37.49]	1.336 [33.93]	1.426 [36.22]	3		.936 [23.77]		
530521-4	5	2.596 [65.94]	2.162 [54.91]	1.788 [45.41]	1.648 [41.85]	1.738 [44.14]	4		1.248 [31.69]		OBSOLETE
530521-5	6	2.908 [73.86]	2.474 [62.54]	2.100 [53.34]	1.960 [49.74]	2.050 [52.07]	5		1.560 [39.62]		OBSOLETE ³
530521-6	8	3.532 [89.71]	3.098 [78.69]	2.724 [69.18]	2.584 [65.63]	2.674 [67.92]	7		2.184 [55.47]		
530521-7	9	3.844 [97.63]	3.410 [86.61]	3.036 [77.11]	2.896 [73.55]	2.986 [75.84]	8		2.496 [63.39]		
530521-8	10	4.156 [105.56]	3.722 [94.54]	3.348 [85.04]	3.208 [81.48]	3.298 [83.77]	9		2.808 [71.32]		OBSOLETE
530521-9	12	4.780 [121.41]	4.346 [110.39]	3.972 [100.89]	3.832 [97.33]	3.922 [99.62]	11	.312 [7.92]	3.432 [87.17]		

- ¹ MEASURE ACROSS MOUNTING EARS. MAY GO TO .020 [0.51] OVER NOMINAL AT TOP OF HOUSING.
- 2. VOID CORING OPTIONAL.
- ³ OBSOLETE PARTS: OBSOLETE CIS STREAMLINING PER D.RENAUD/D.SINISI

UNLESS OTHERWISE SPECIFIED DIMENSIONS ARE IN INCHES. TOLERANCES ON: DECIMALS \pm ANGLES \pm		CONTRACT NO	PART NO	
MATERIAL	DR <i>Drumke</i> 5-14-75 CHK <i>Drumke</i> 5-14-75 APPD	 AMP INCORPORATED Harrisburg, Pa.		
FINISH	APPD <i>R. Shorman</i> 5/14/75	NAME HOUSING, HIGH CURRENT CONNECTOR		
	DSGN APPD	SIZE	CODE IDENT NO	DRAWING NO.
	OTHER APPD	C	00779	530521
		SCALE	SHEET 2 OF 2	