

## MS-217-5







## MS-217-5

Mains switching Reed Sensor

| Electrical Characteristics      |        | @ 25 °C          |
|---------------------------------|--------|------------------|
| Contact form                    |        | A                |
| Contact rating max.             | W / VA | 10               |
| Switching voltage max.          | VDC    | 200              |
|                                 | VAC    | 260              |
| Switching current max.          | A      | 0.3              |
| Carry current max.              | A      | 1.4              |
| Breakdown voltage min.          | VDC    | 400              |
| Total resistance max. (initial) | mΩ     | 200              |
| Insulation resistance min.      | Ω      | 10 <sup>10</sup> |

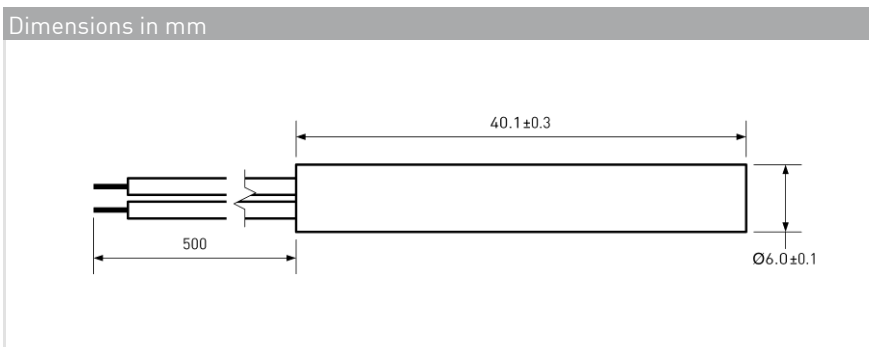
| Features                               |
|--|
| ➤ Mains switch inside                  |
| ➤ Replaces various competitors types   |
| ➤ Various sensitivity ranges available |
| ➤ Customized types available           |

| Magnetical Characteristics (of unmodified Reed Switch) |      | @ 25 °C |
|--|------|---------|
| Pull in range available                                | AT   | 15 - 30 |
| Drop out min.  | AT   | 4       |
| Test coil  | TC   | 200     |
| Test equipment tolerance                               | ± AT | 2       |

| Approvals   |
|---|
|  |
|  |
|  |
|  |

| Operating Characteristics (of unmodified Reed Switch) |    | @ 25 °C |
|---|----|---------|
| Switching frequency max.                              | Hz | 400     |
| Resonant frequency typ.                               | Hz | 4000    |
| Operate time max. (incl. bounce)                      | ms | 0.6     |
| Release time max.                                     | ms | 0.2     |

| Environmental Characteristics |    |            |
|-------------------------------|----|------------|
| Operating temperature         | °C | -20 to +85 |
| Vibration (50-2000 Hz)        | g  | 30         |
| Shock (1/2 sin 11 ms)         | g  | 100        |



| Ordering Information                            |                 |
|---|-----------------|
| Packing Unit                                    | 50 pcs          |
| Weight per piece                                | 5.4 g           |
| Weight per package                              | 280 g           |
| Standard AT Ranges                              |                 |
|   | 2 = 15 to 20 AT |
|   | 3 = 20 to 25 AT |
|   | 4 = 25 to 30 AT |
| Ordering Example                                |                 |
| MS-217-5-2 describes MS-217-5 with 15 to 20 AT. |                 |

MS-217-5



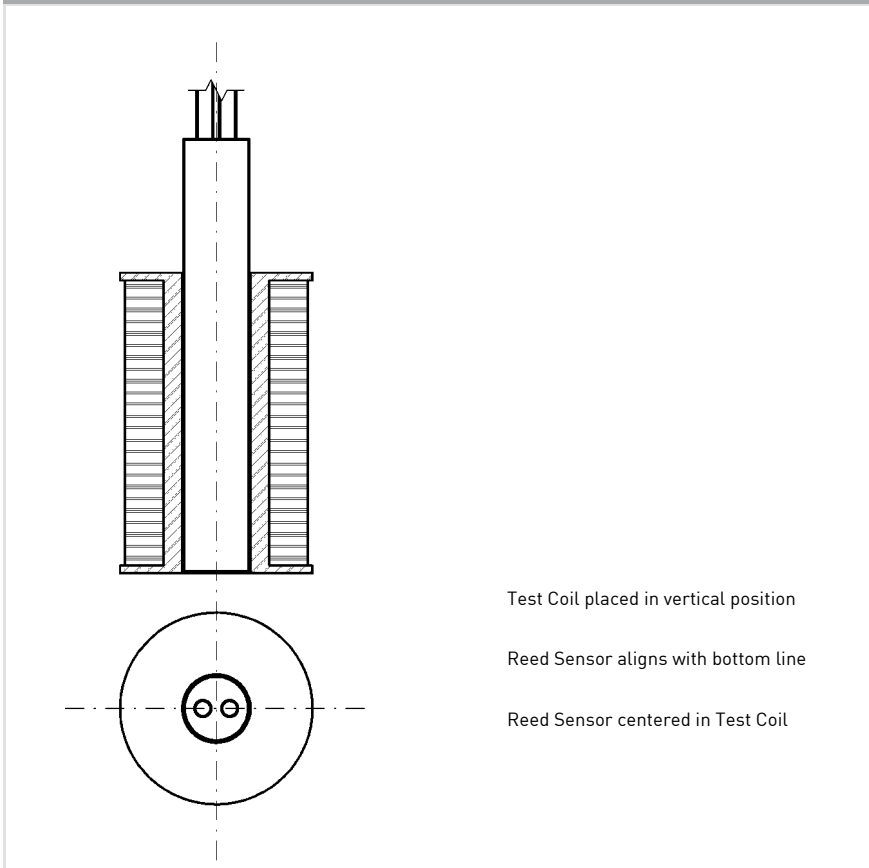
**MS-217-5**

Mains switching Reed Sensor

Material Information

|                  | Material                                       | Colour |
|------------------|--|--------|
| Housing          | ABS  | black  |
| Cable            | UL 1007/1569, AWG 24, 4 mm stripped and tinned | black  |
| Potting compound | Epoxy  | black  |

Test Procedure of final Reed Sensor



Test Coil placed in vertical position

Reed Sensor aligns with bottom line

Reed Sensor centered in Test Coil

Test Parameters

|               |              |
|---------------|--------------|
| Test coil     | TC-093       |
| Test programs |              |
| AT range      | Test program |
| 2 =           | MS-217-5-2   |
| 3 =           | MS-217-5-3   |
| 4 =           | MS-217-5-4   |

Remarks

When mounted onto ferromagnetic parts switching distance of MS-217-5 may reduce.  
Electromagnetical influences and magnetic fields may change the switching behaviour of the sensor.