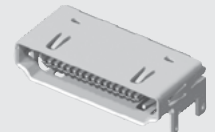


HDMR-19-01-S-SM-PF



HDMR-19-02-S-SM



HDMR-29-01-S-SM

**HDMR SERIES**

# HIGH-SPEED I/O RECEPTACLES

## SPECIFICATIONS

For complete specifications and recommended PCB layouts see [www.samtec.com?HDMR](http://www.samtec.com?HDMR)

**Insulator Material:**

High Temperature Thermoplastic

**Contact Material:**

Copper Alloy

**Shell Material:**

Steel

**Operating Temp Range:**

-25 °C to +85 °C

**Plating:**

Gold on Contacts, Nickel on Shell and Tin on Tails

**Current Rating:**

1.3 A per pin  
(6 adjacent pins powered)

**Voltage Rating:**

40 VAC

**Contact Resistance:**

30 mΩ

**Minimum Cycles:**

100

**Lead-Free Solderable:**

Yes

**RoHS Compliant:**

Yes

Meets Digital Display Working Group Single Monitor Interface Specifications

Optional Panel Flange (19 position only)

Hot Pluggable

Selectively Plated

19 or 29 Positions

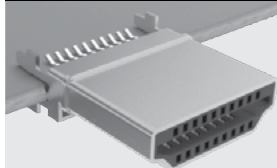
Surface Mount or Through-hole Signal Leads

Through-hole or Surface Mount (19 only) Ground tails

**RUGGEDIZED**  
BY SAMTEC

- Panel flange option
- Locking option

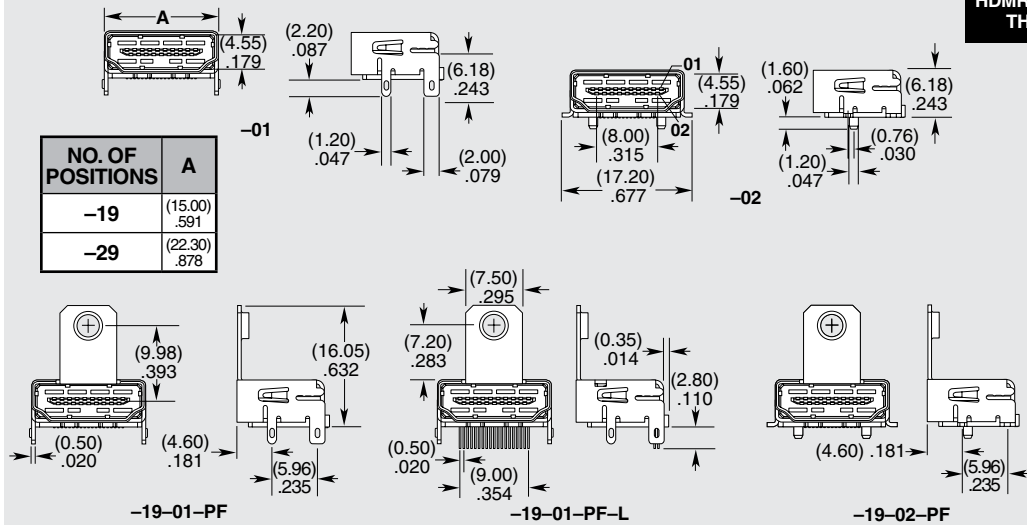
## OTHER SOLUTIONS



HDMP is an Edge Mount plug that mates to HDMR receptacles.

Call Samtec for HDMP Series specifications.

HDMR	NO. OF POSITIONS	LEAD STYLE	PLATING	TAIL OPTION	OPTIONS
	<p><b>-19</b> = 19 Positions / Mates with HPXXX 5 Pairs</p> <p><b>-29</b> = 29 Positions / Mates with HPXXX 8 Pairs</p>	<p><b>-01</b> = Through-hole Ground Tails</p> <p><b>-02</b> = Surface Mount Ground Tails (-19 only)</p>	<p><b>-S</b> = 30 μm (0.76 μm) Gold on Mating Area, Tin on Tails</p>	<p><b>-SM</b> = Surface Mount (Signal Leads)</p> <p><b>-TH</b> = Through-hole (Only available on HDMR-19-01-X-TH-PF-L)</p>	<p>(Leave Blank for no Panel Flange)</p> <p><b>-PF</b> = Panel Flange</p> <p><b>-L</b> = Locking Option (Only available on HDMR-19-01-X-TH-PF-L)</p>



**Note:** Some lengths, styles and options are non-standard, non-returnable.