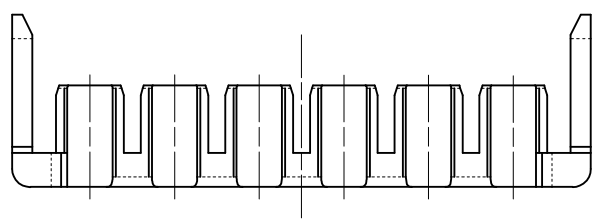
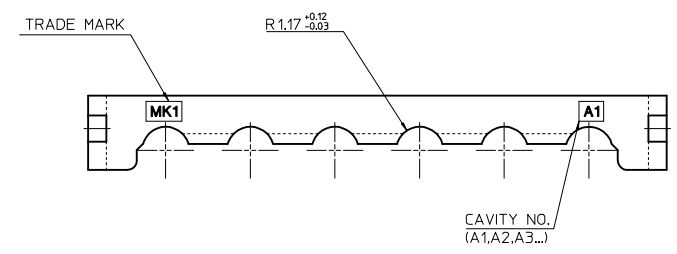
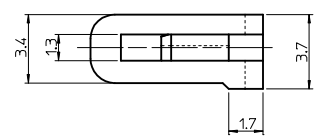
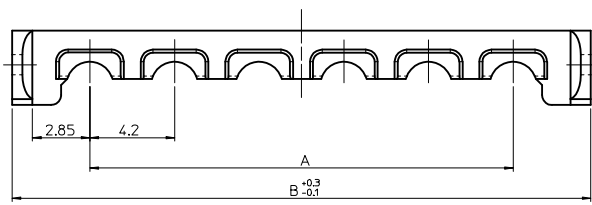
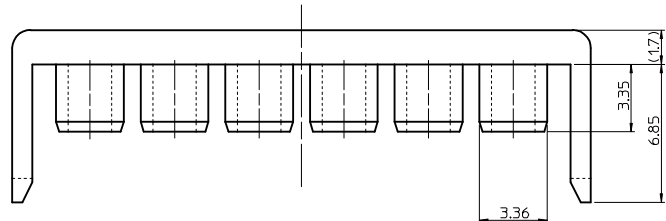
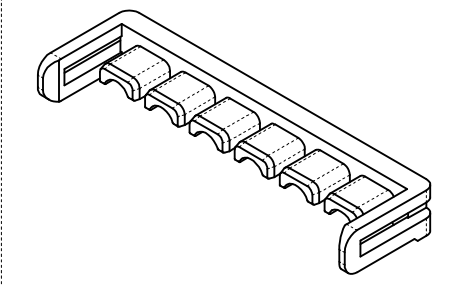


10 9 8 7 6 5 4 3 2 1



49627-1182	496271182	42	49.5	11
49627-1082	496271082	37.8	45.3	10
49627-0982	496270982	33.6	41.1	9
49627-0682	496270682	21.0	28.5	6
ENG NO.	MATREIAL NO.	A	B	CIRCUIT

NOTES

- ①. MATERIAL : POLYAMIDE(PA66), GLASS FILLED, UL94V-HB
COLOR : BLUE
- 2. APPLICABLE TERMINAL : 5556 T2A SERIES, 5556 T SERIES
- 3. MATED WITH HOUSING : 49624-**9* SERIES
- 4. PRODUCT SPECIFICATION : PS-49623-001

CIRCUIT SIZE : _____

12/18/20/22

REVISED
EC NO: KOR2016-0042
DRWNS:CHONG03 2015/11/02
CHKD:
APPR:YSK1M02 2016/10/31

DESCRIPTION
QUALITY SYMBOLS
=0
=0

GENERAL TOLERANCES (UNLESS SPECIFIED)	
	mm
4 PLACES	± ---
3 PLACES	± ---
2 PLACES	± 0.3
1 PLACE	± 0.3
0 PLACE	± ---
ANGULAR ± 1 °	
DRAFT WHERE APPLICABLE MUST REMAIN WITHIN DIMENSIONS	

DIMENSION STYLE	
MM ONLY	
DRAWN BY	DATE
SK.HAN	2008/01/28
CHECKED BY	DATE
WY.YANG	2008/01/28
APPROVED BY	DATE
EH. JUNG	2008/01/28
MATERIAL NO.	
SEE TABLE	

SCALE	DESIGN UNITS	THIRD ANGLE PROJECTION
4:1	METRIC	☉ □
TITLE		
4.2MM W/W TPA CONN. TPA FOR FEMALE HOUSING		
DOCUMENT NO.		SHEET NO.
SD-49627-001		1 OF 1
THIS DRAWING CONTAINS INFORMATION THAT IS PROPRIETARY TO MOLEX INCORPORATED AND SHOULD NOT BE USED WITHOUT WRITTEN PERMISSION		



9 8 7 6 5 4 3 2 1