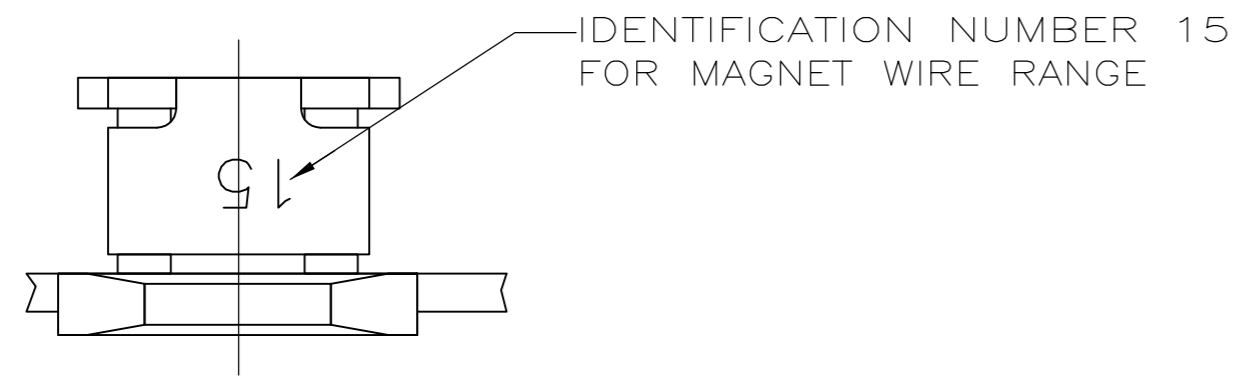
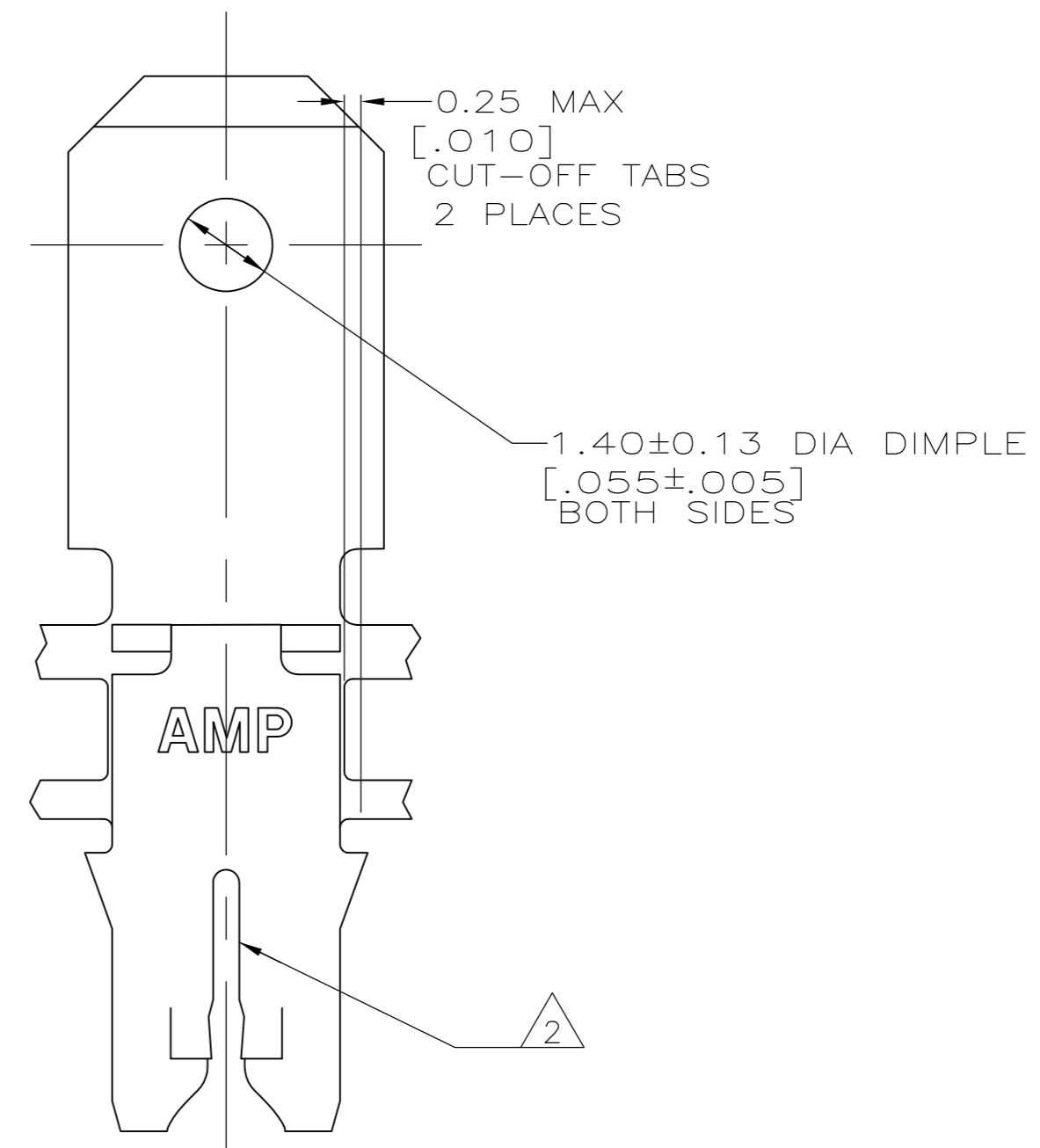
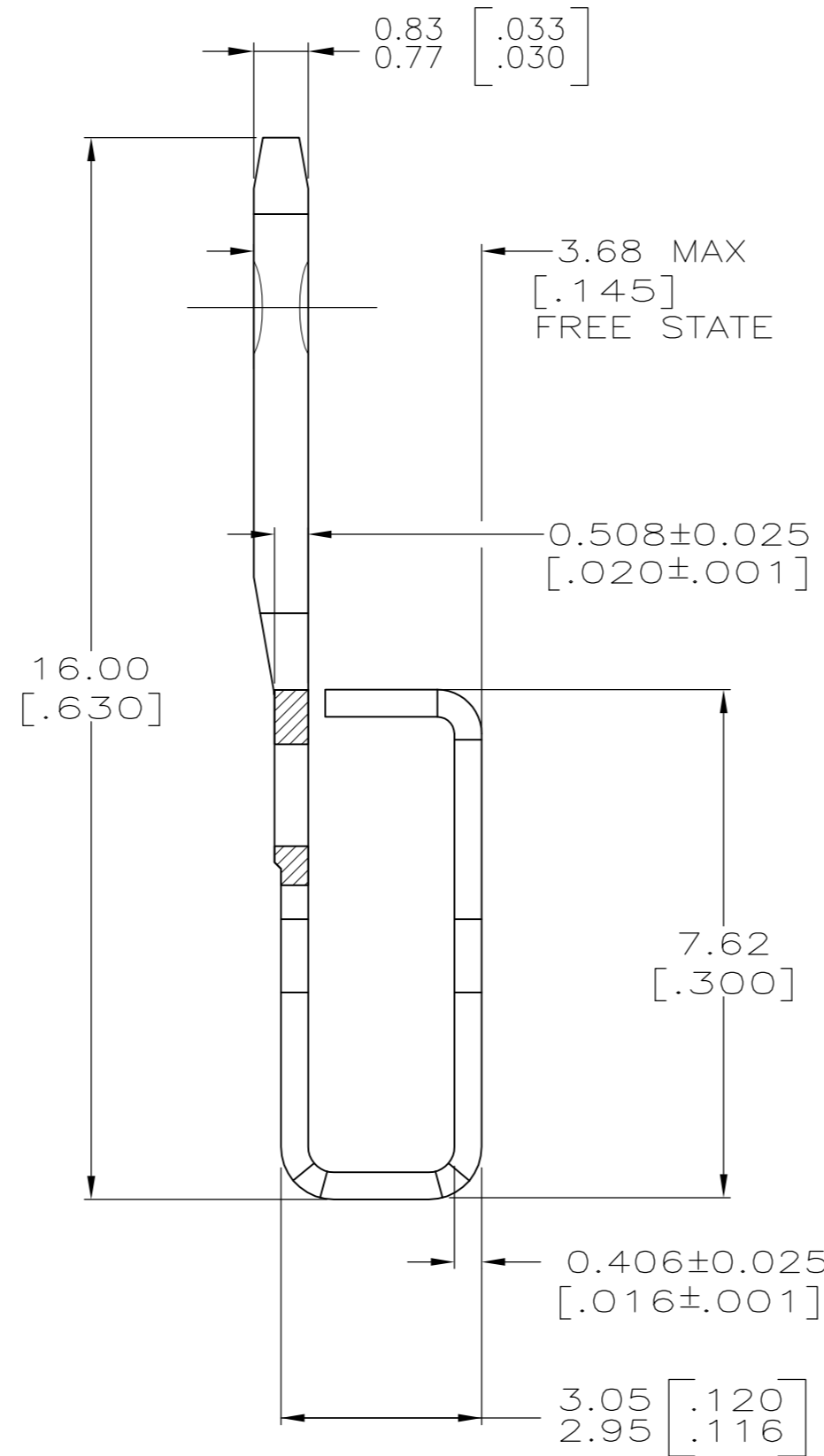
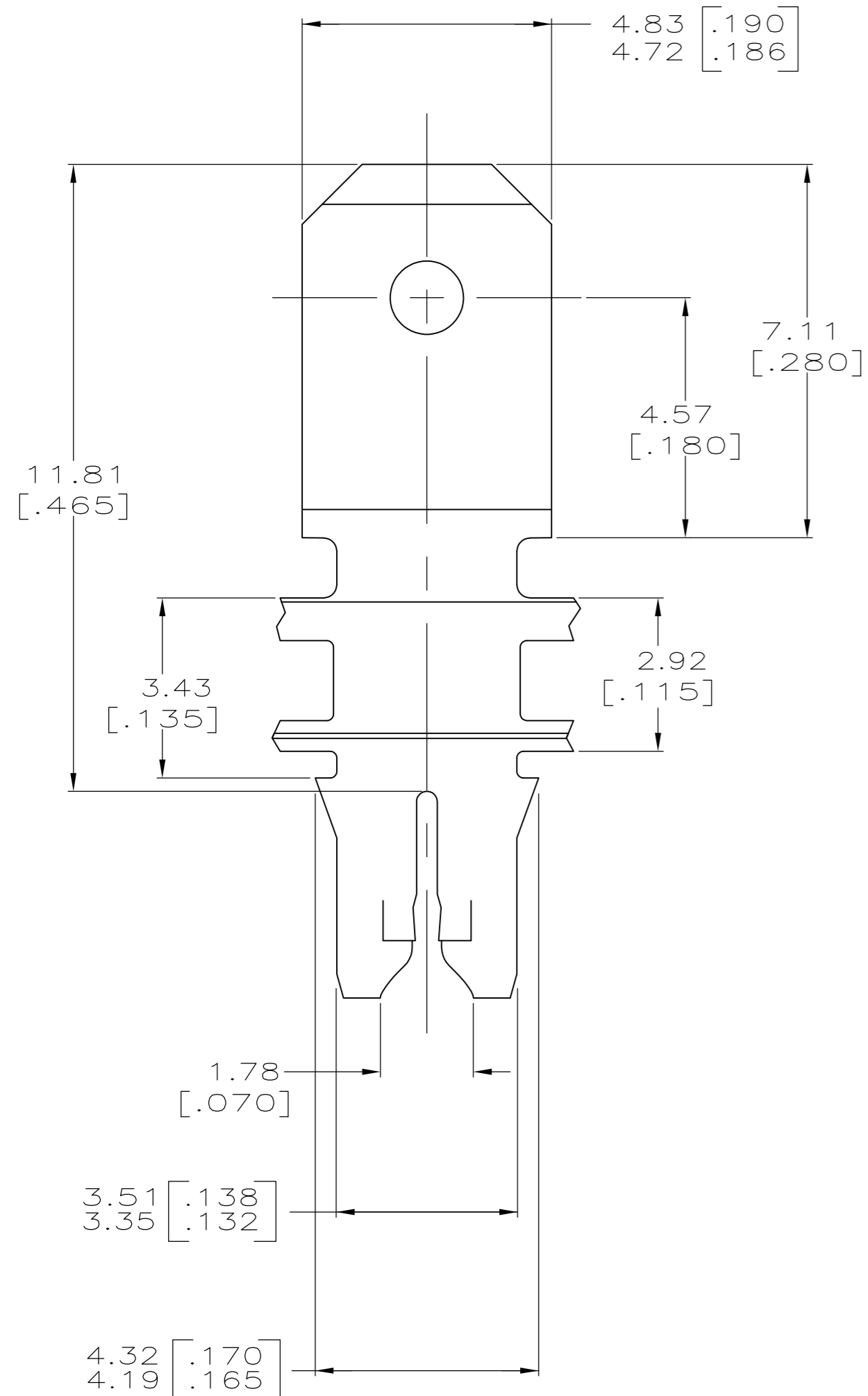


THIS DRAWING IS UNPUBLISHED. RELEASED FOR PUBLICATION  
 © COPYRIGHT - By - ALL RIGHTS RESERVED.

LOC		DIST		REVISIONS			
P	LTR	DESCRIPTION		DATE	DWN	APVD	
AF	50	D2	ECR-15-005665	10AUG2015	BDA	PKS	



- CONTINUOUS STRIP ON REELS WITH TERMINALS LOCATED ON  $5.59 \pm 0.08$  [ $.220 \pm .003$ ] CENTERS.
- SLOT ACCEPTS A SINGLE WIRE MAX OF  $0.64 - 0.81$ mm [#22-#20] AWG COPPER MAGNET WIRE.  
SLOT ACCEPTS A SINGLE WIRE MAX OF  $0.72 - 0.91$ mm [#21-#19] AWG ALUMINUM MAGNET WIRE  
ALUMINUM WIRE RANGE APPLIES FOR POST-TIN PLATED VERSIONS ONLY.
- AFTER INSERTION INTO PLASTIC HOLDER TAB PORTION MUST BE BENT OVER  $45^\circ$  TO  $90^\circ$  OR POTTED-IN TO PREVENT PULL-OUT WHEN MATING RECEPTACLE IS DISCONNECTED.



1217065-1  
PART NUMBER

THIS DRAWING IS A CONTROLLED DOCUMENT.		DWN	26FEB98		TE Connectivity		
DIMENSIONS: mm [INCHES]		CHK	26FEB98		NAME		
TOLERANCES UNLESS OTHERWISE SPECIFIED:		APVD	26FEB98		PRODUCT SPEC		
0 PLC ± - 1 PLC ± - 2 PLC ± 0.25[.010] 3 PLC ± - 4 PLC ± - ANGLES ± -		M.S.FEHER N.E.NEFF			108-2012 APPLICATION SPEC		
MATERIAL	FINISH	WEIGHT		SIZE	CAGE CODE	DRAWING NO	RESTRICTED TO
BRASS	TIN PLATE	-		A2	00779	C=1217065	-
CUSTOMER DRAWING				SCALE	10:1	SHEET	1 OF 1
				REV	D2		