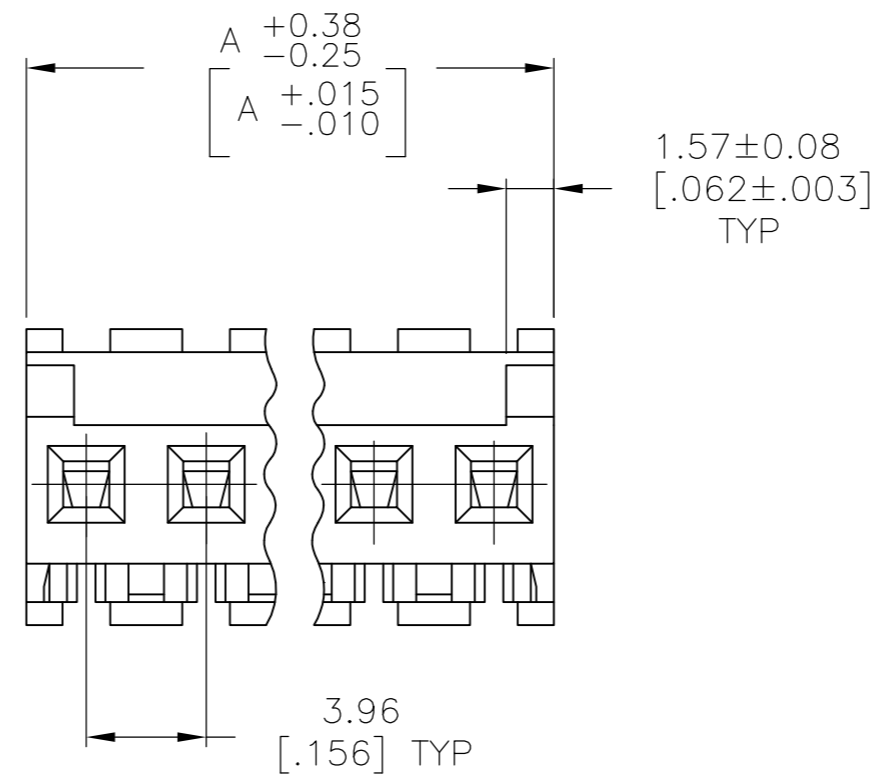
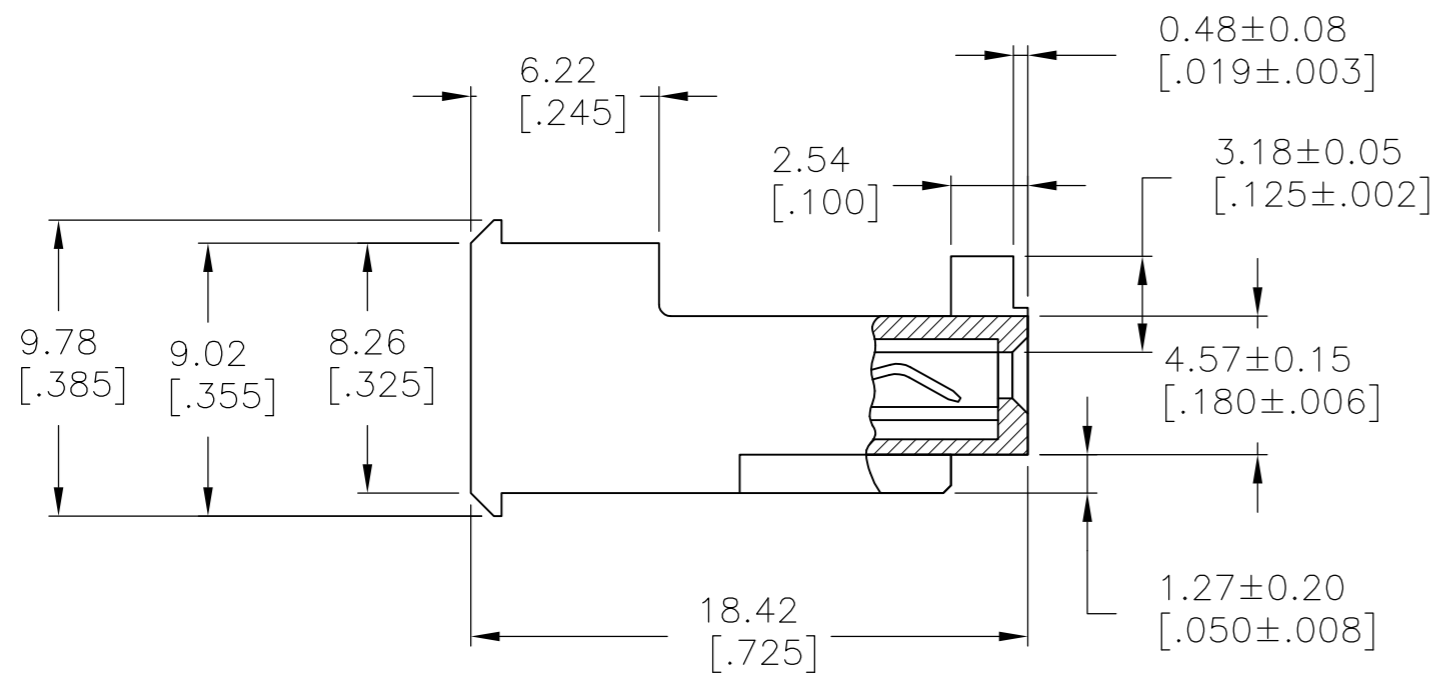
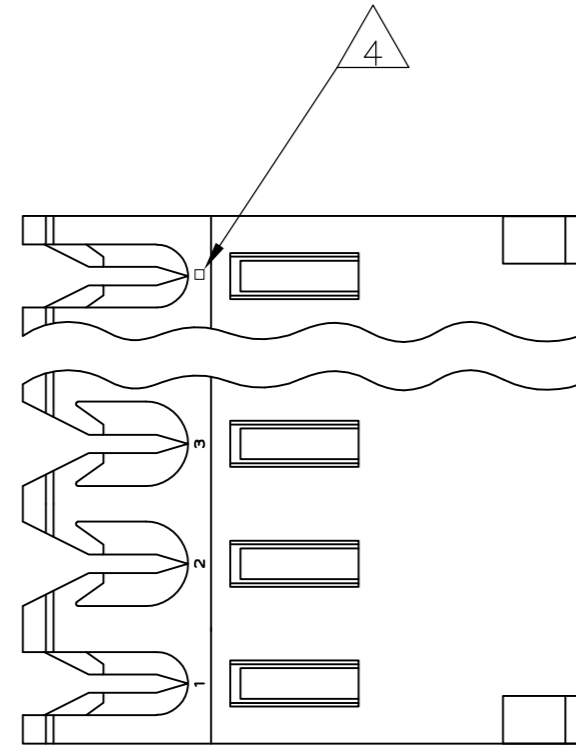


THIS DRAWING IS UNPUBLISHED. RELEASED FOR PUBLICATION  
 © COPYRIGHT - By - ALL RIGHTS RESERVED.

LOC	DIST	REVISIONS					
CM	54	P	LTR	DESCRIPTION	DATE	DWN	APVD
		B2		REVISED PER ECO-11-014117	18JUL11	HMR	SM



1 MATERIAL: CONNECTOR - NYLON UL94V-0 (BLACK).  
 CONTACTS - 0.30[.012] THICK COPPER ALLOY  
 BRIGHT TIN-LEAD 0.00203[.000080] MIN THICK FOR CONTACTS  
 644570-2 THRU 1-644570-4  
 MATTE WHISKER MITIGATED TIN 0.00203[.000080] MIN THICK FOR  
 3-644570-2 THRU 4-644570-4

- 2. CONTACTS ACCEPT 18 AWG WIRE WITH 2.41[.095] MAX INSULATION DIAMETER.
- 3. CONTACTS MUST ACCEPT 1.14±0.03 [.045±.001] SQUARE POST AND REMAIN LOCKED IN POSITION.
- 4 IDENTIFICATION NUMBER FOR LAST CIRCUIT MAY NOT APPEAR ON ALL ASSEMBLIES.
- 5. DIMENSIONS IN BRACKETS ARE IN INCHES.

6. HOUSING FEATURES ARE: FEED-THRU WITHOUT LOCKING RAMP AND WITH POLARIZING TAB.

7 OBSOLETE PARTS: OBSOLETE CIS STREAMLINING PER D.RENAUD/D.SINISI

47.55 [1.872]	12	4-644570-2	
43.59 [1.716]	11	4-644570-1	
39.62 [1.560]	10	4-644570-0	
35.66 [1.404]	9	3-644570-9	
31.70 [1.248]	8	3-644570-8	
27.74 [1.092]	7	3-644570-7	
23.77 [.936]	6	3-644570-6	
19.81 [.780]	5	3-644570-5	
15.85 [.624]	4	3-644570-4	
11.89 [.468]	3	3-644570-3	
7.92 [.312]	2	3-644570-2	
47.55 [1.872]	12	<del>1-644570-2</del>	
43.59 [1.716]	11	<del>1-644570-1</del>	
39.62 [1.560]	10	<del>1-644570-0</del>	
35.66 [1.404]	9	<del>644570-9</del>	
31.70 [1.248]	8	<del>644570-8</del>	
27.74 [1.092]	7	<del>644570-7</del>	
23.77 [.936]	6	<del>644570-6</del>	
19.81 [.780]	5	<del>644570-5</del>	
15.85 [.624]	4	<del>644570-4</del>	
11.89 [.468]	3	<del>644570-3</del>	
7.92 [.312]	2	<del>644570-2</del>	
DIM A		NO OF CIRCUITS	PART NO

7 SUPERSEDED  
 7 OBSOLETE  
 7 SUPERSEDED  
 7 SUPERSEDED

METRIC

THIS DRAWING IS A CONTROLLED DOCUMENT.		DWN	-	<b>STE</b> TE Connectivity	
DIMENSIONS: mm [INCHES]		CHK	-		
TOLERANCES UNLESS OTHERWISE SPECIFIED:		APVD	-	NAME	
0 PLC	± -	PRODUCT SPEC		MTA-156 CONNECTOR ASSEMBLY, 18 AWG, UL94V-0, SPECIAL	
1 PLC	± -	APPLICATION SPEC		SIZE	A2
2 PLC	± -	WEIGHT		CAGE CODE	00779
3 PLC	± 0.13 [.005]	CUSTOMER DRAWING		DRAWING NO	C-644570
4 PLC	± -	SCALE		1 OF 1	REV B2
ANGLES	± -	SHEET		4:1	
FINISH	1	RESTRICTED TO			