



**ANATECH ELECTRONICS INC**  
RF & Microwave Filters & Products

## 25 MHz LC Bandpass Filter

**Part Number: AE25B5358**



### Electrical Specifications

**Center Frequency:** 25 MHz  
**3dB Passband:** 24.4 MHz to 25.6 MHz  
**Insertion Loss:** <3.0 dB  
**Rejection:**  $\geq 45$ dB @ 0-12.5 MHz  
**Rejection2:**  $\geq 50$ dB @ 50 MHz  
**Impedance:** 50 Ohms

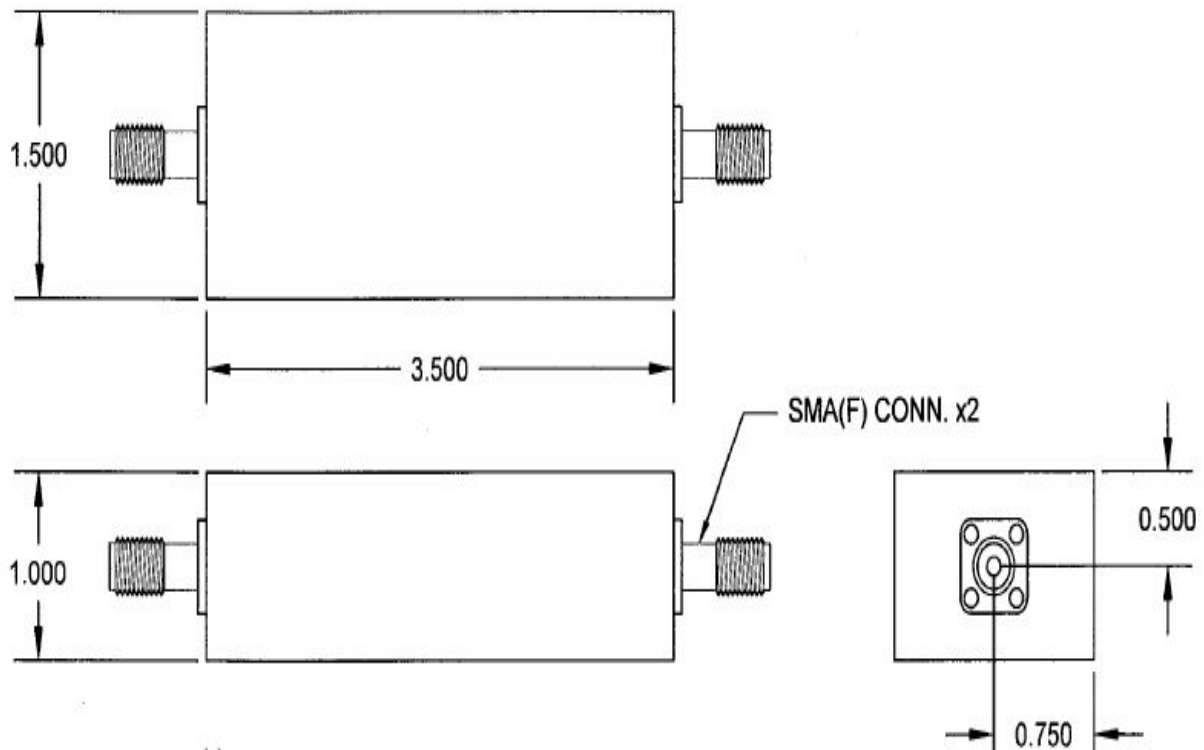
### Mechanical

**Connector Type:** SMA(F)  
**Dimensions:** 3.5" x 1.5" x 1.0" in.

### Environmental

**Operating Temperature:** -25°C to +70°C  
**Storage Temperature:** -40°C to +90°C  
**Shock:** 10 G. 11ms  
**Vibration:** 10 G. 5 to 200Hz

### Outline Drawing:



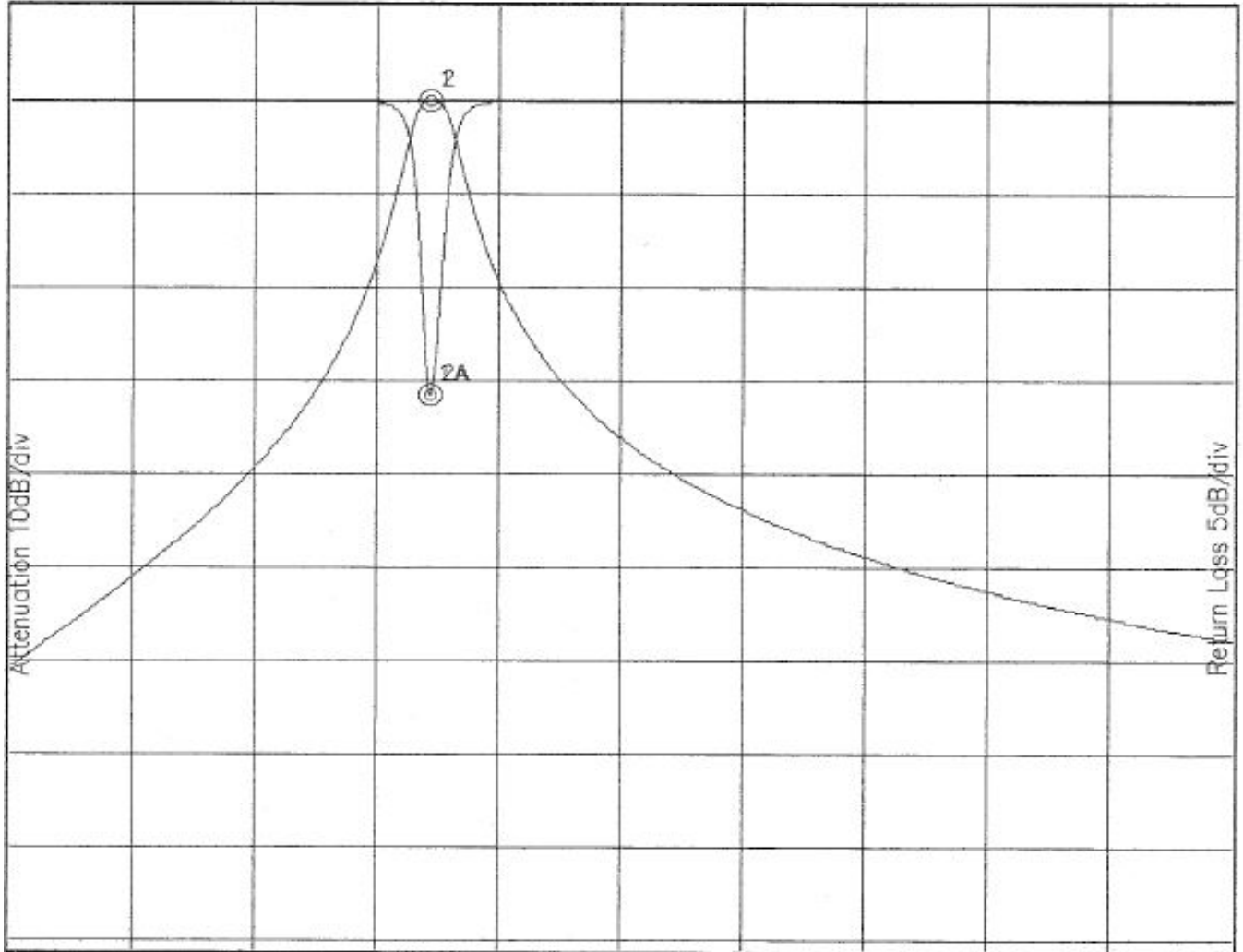


### Response Plot:

B5358.lad

DEC 8, 1999

Attenuation/Return Loss



Attenuation Start: 12.0MHz Stop: 50.0MHz

Return Loss Start: 12.0MHz Stop: 50.0MHz

Offset -0.6521dB

Marker 1 Freq 25.015MHz Atten 0.009dB

Marker 1A Freq 25.015MHz Ret Loss -15.702dB

Marker 2 Freq 25.015MHz Atten 0.009dB

Marker 2A Freq 25.015MHz Ret Loss -15.702dB