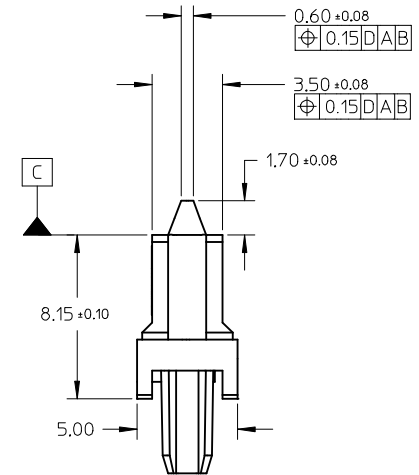


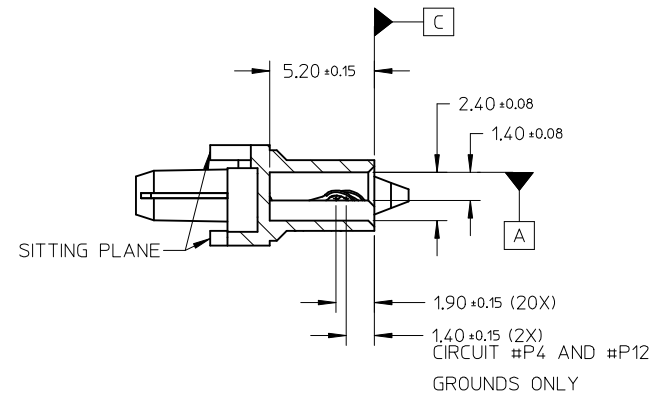
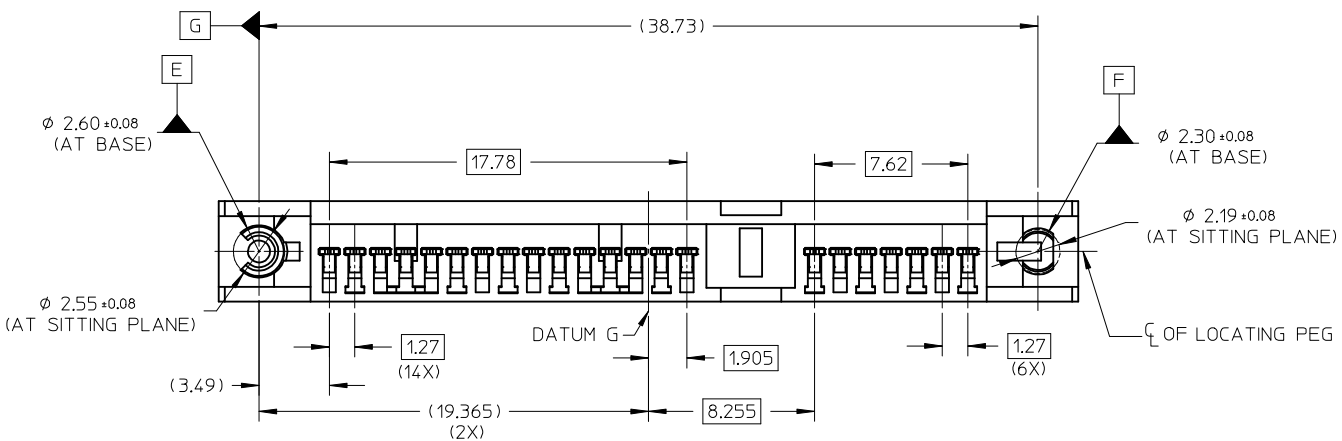
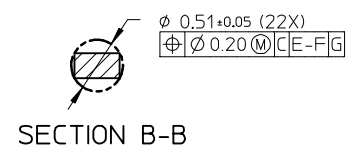
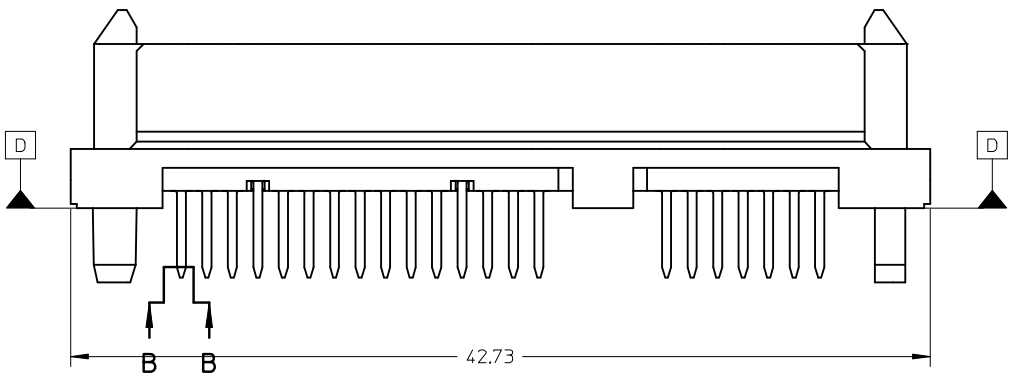
NOTES:

- MATERIAL: LIQUID CRYSTALLINE POLYMER (LCP), GLASS FILLED UL 94V-0, COLOR: BLACK
TERMINAL: COPPER ALLOY
- PLATING:
CONTACT: 0.76µm MIN. SELECTIVE GOLD OVER 1.27µm MIN. NICKEL UNDERPLATE
SOLDERTAIL: 2.54µm MIN. TIN OVER 1.27µm MIN. NICKEL UNDERPLATE
- MOLEX LOGO LOCATED APPROXIMATELY AS SHOWN
- MAXIMUM WARPAGE OF 0.13 mm OVER THE LENGTH OF THE CONNECTOR IN ANY DIRECTION BEFORE AND AFTER EXPOSURE TO MAX. 260°C FOR 10 SECONDS
- PRODUCT SPECIFICATION: PS-87779-011 APPLIES
- PACKAGING: 30 CONNECTORS PER TRAY
- MATES WITH SATA PLUG SERIES: 87679, 87703, 87799.



OBS TIN/LEAD P/N EC NO: S2006-0984 DRWN:MLONG 2006/04/04 CHKD:CGTAN 2006/04/04 APPR:KCLING 2006/04/04	QUALITY SYMBOLS	GENERAL TOLERANCES (UNLESS SPECIFIED)		DIMENSION STYLE MM ONLY		SCALE NTS	DESIGN UNITS METRIC	THIRD ANGLE PROJECTION
	▽=0 ◻=0	mm	INCH	DRAWN BY DKOH	DATE 2003/11/24	TITLE SERIAL ATA, BACKPLANE STD HEIGHT, RECEPT., T/H		
		4 PLACES ± --- ± ---	3 PLACES ± --- ± ---	CHECKED BY KCLING	DATE 2003/12/03	MOLEX MOLEX INCORPORATED		
		2 PLACES ± 0.20 ± ---	1 PLACE ± --- ± ---	APPROVED BY SKTOH	DATE 2003/12/03	DOCUMENT NO. SD-87779-020	SHEET NO. 1 OF 4	
		ANGULAR ± 3 °		MATERIAL NO. 87779-1001		THIS DRAWING CONTAINS INFORMATION THAT IS PROPRIETARY TO MOLEX INCORPORATED AND SHOULD NOT BE USED WITHOUT WRITTEN PERMISSION		
		DRAFT WHERE APPLICABLE MUST REMAIN WITHIN DIMENSIONS		SIZE A3				

10 9 8 7 6 5 4 3 2 1

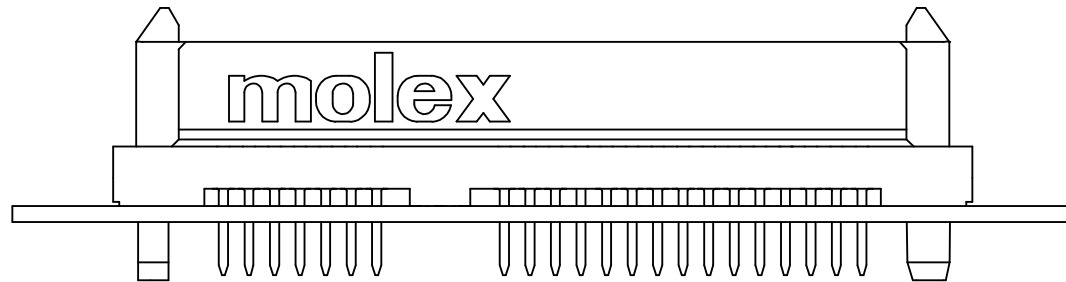
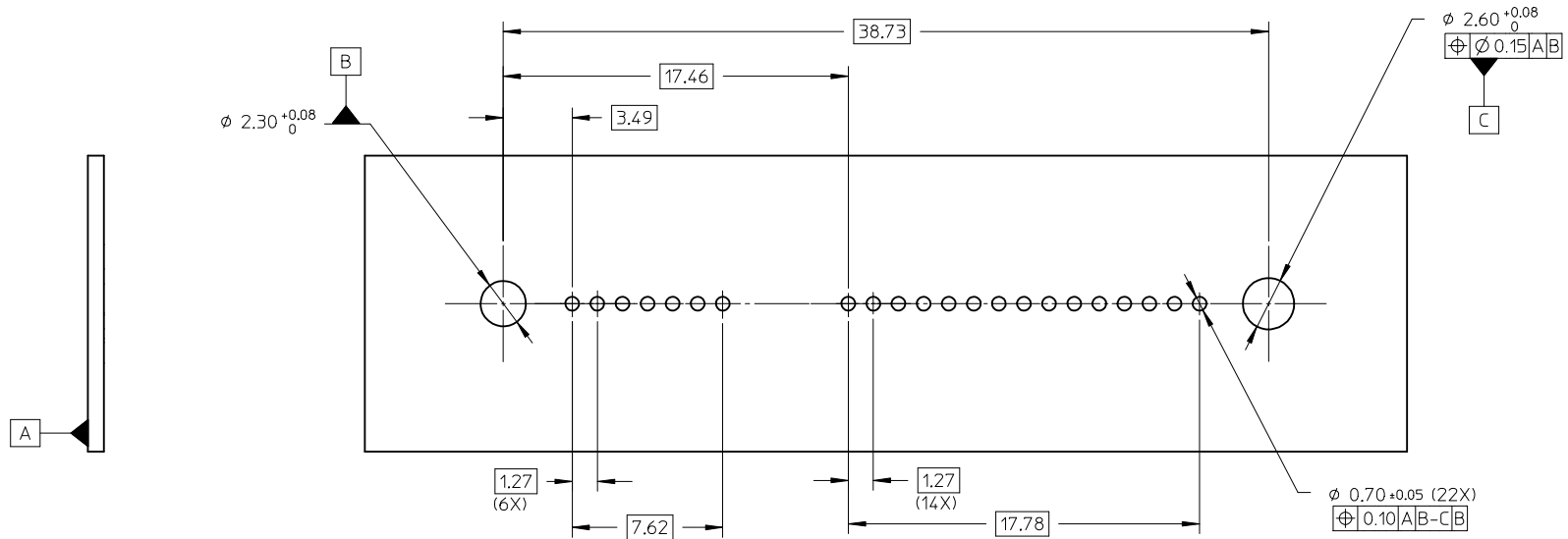


9 8 7 6 5 4 3 2 1

OBS TIN/LEAD P/N EC NO: S2006-0984 DRWN:MLONG 2006/04/04 CHKD:CGTAN 2006/04/04 APPR:KCLING 2006/04/04	DESCRIPTION REV	QUALITY SYMBOLS	GENERAL TOLERANCES (UNLESS SPECIFIED)		DIMENSION STYLE MM ONLY		SCALE NTS	DESIGN UNITS METRIC	THIRD ANGLE PROJECTION	
		$\nabla = 0$ $\text{C} = 0$	mm INCH 4 PLACES ± --- ± --- 3 PLACES ± --- ± --- 2 PLACES ± 0.20 ± --- 1 PLACE ± --- ± --- ANGULAR ± 3 °	DRAWN BY DKOH	DATE 2003/11/24	TITLE SERIAL ATA, BACKPLANE STD HEIGHT, RECEPT., T/H				
			DRAFT WHERE APPLICABLE MUST REMAIN WITHIN DIMENSIONS	CHECKED BY KCLING	DATE 2003/12/03	APPROVED BY SKTOH		DATE 2003/12/03	MOLEX INCORPORATED	
				MATERIAL NO. 87779-1001	DOCUMENT NO. SD-87779-020	SHEET NO. 2 OF 4				

THIS DRAWING CONTAINS INFORMATION THAT IS PROPRIETARY TO MOLEX INCORPORATED AND SHOULD NOT BE USED WITHOUT WRITTEN PERMISSION

10 9 8 7 6 5 4 3 2 1

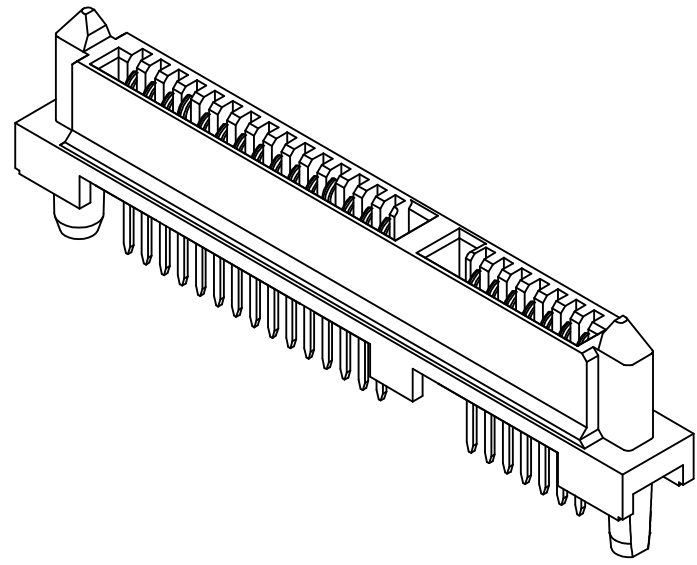
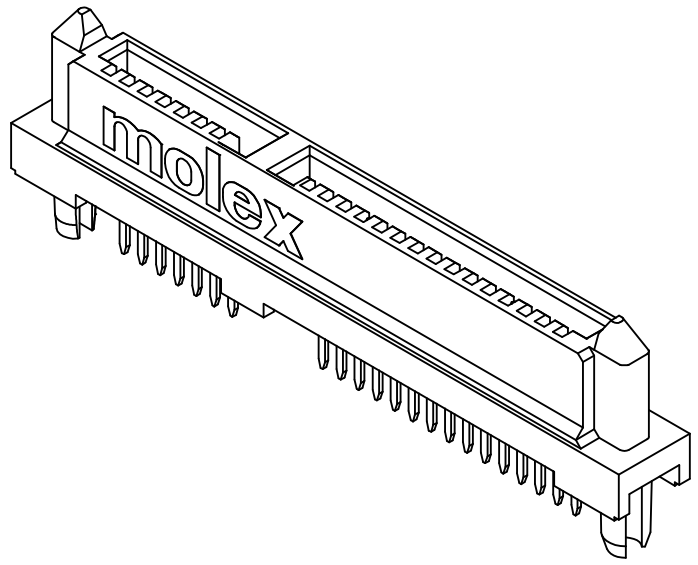


PCB THICKNESS: 0.80 TO 2.54mm
RECOMMENDED PCB LAYOUT

OBS TIN/LEAD P/N EC NO: S2006-0984 DRW:WJL/ONG CHKD:CGTAN APPR:KCLING	2006/04/04 2006/04/04 2006/04/04	DESCRIPTION REV	QUALITY SYMBOLS	GENERAL TOLERANCES (UNLESS SPECIFIED) mm INCH 4 PLACES ± --- ± --- 3 PLACES ± --- ± --- 2 PLACES ± 0.20 ± --- 1 PLACE ± --- ± --- ANGULAR ± 3 °	DIMENSION STYLE	SCALE	DESIGN UNITS	THIRD ANGLE PROJECTION	
					MM ONLY	NTS	METRIC		
					DRAWN BY	DATE	TITLE		
					CHECKED BY	DATE			
					APPROVED BY	DATE	SERIAL ATA, BACKPLANE STD HEIGHT, RECEPT., T/H		
					SKTOH	2003/12/03	MOLEX INCORPORATED		
					MATERIAL NO.	87779-1001	DOCUMENT NO.	SHEET NO.	
							SD-87779-020	3 OF 4	
					DRAFT WHERE APPLICABLE MUST REMAIN WITHIN DIMENSIONS				
					SIZE	THIS DRAWING CONTAINS INFORMATION THAT IS PROPRIETARY TO MOLEX INCORPORATED AND SHOULD NOT BE USED WITHOUT WRITTEN PERMISSION			
					A3				

9 8 7 6 5 4 3 2 1

10 9 8 7 6 5 4 3 2 1



OBS: TIN/LEAD P/N EC NO: S2006-0984 DRWN:MLONG 2006/04/04 CHKD:CGTAN 2006/04/04 APPR:KCLING 2006/04/04	QUALITY SYMBOLS ▽=0 Ⓢ=0	GENERAL TOLERANCES (UNLESS SPECIFIED)		DIMENSION STYLE MM ONLY		SCALE NTS	DESIGN UNITS METRIC	THIRD ANGLE PROJECTION		
			mm	INCH	DRAWN BY DKOH	DATE 2003/11/24	TITLE SERIAL ATA, BACKPLANE STD HEIGHT, RECEPT., T/H			
		4 PLACES	± ---	± ---	CHECKED BY KCLING	DATE 2003/12/03	MOLEX INCORPORATED DOCUMENT NO. SD-87779-020 SHEET NO. 4 OF 4			
		3 PLACES	± ---	± ---	APPROVED BY SKTOH	DATE 2003/12/03				
2 PLACES	± 0.20	± ---	MATERIAL NO. 87779-1001		THIS DRAWING CONTAINS INFORMATION THAT IS PROPRIETARY TO MOLEX INCORPORATED AND SHOULD NOT BE USED WITHOUT WRITTEN PERMISSION					
1 PLACE	± ---	± ---	ANGULAR ± 3 °							
DRAFT WHERE APPLICABLE MUST REMAIN WITHIN DIMENSIONS										

9 8 7 6 5 4 3 2 1