

GPI4TIC15DFV GaN Power IC in DFN8x8 Package

Preliminary Datasheet version: 2.0

Features

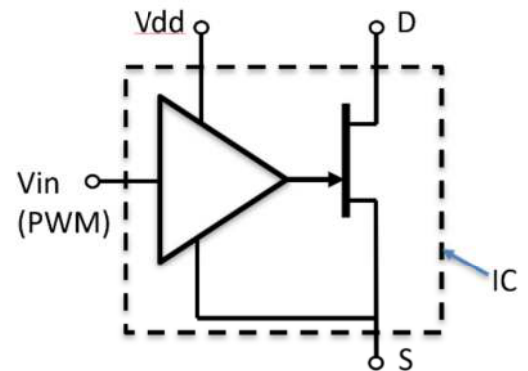
BV _{dss}	R _{dson}	DC bus
900 V	85 mΩ	400-600 V

- Ultra-low R_{DS(on)}
- Ultra-low quiescent leakage current extending batter life
- High dv/dt capability
- Fast switching
- Low Profile
- Suitable for DC bus voltage of 400-600 V
- Smart driving with lower dynamic R_{ds} than discrete GaN FET



Applications

- Switching Power Applications
- Power adapters and power delivery chargers
- Start up procedure: Please set V_{dd}=6V and V_{in}=0 before applying high bus voltage on V_d. V_{dd} is the power supply for the internal gate driver in our GaN Power IC. It needs to be set to a normal operation voltage (e.g., 6.5V) before turning on the high voltage power supply or apply high voltage to the drain.



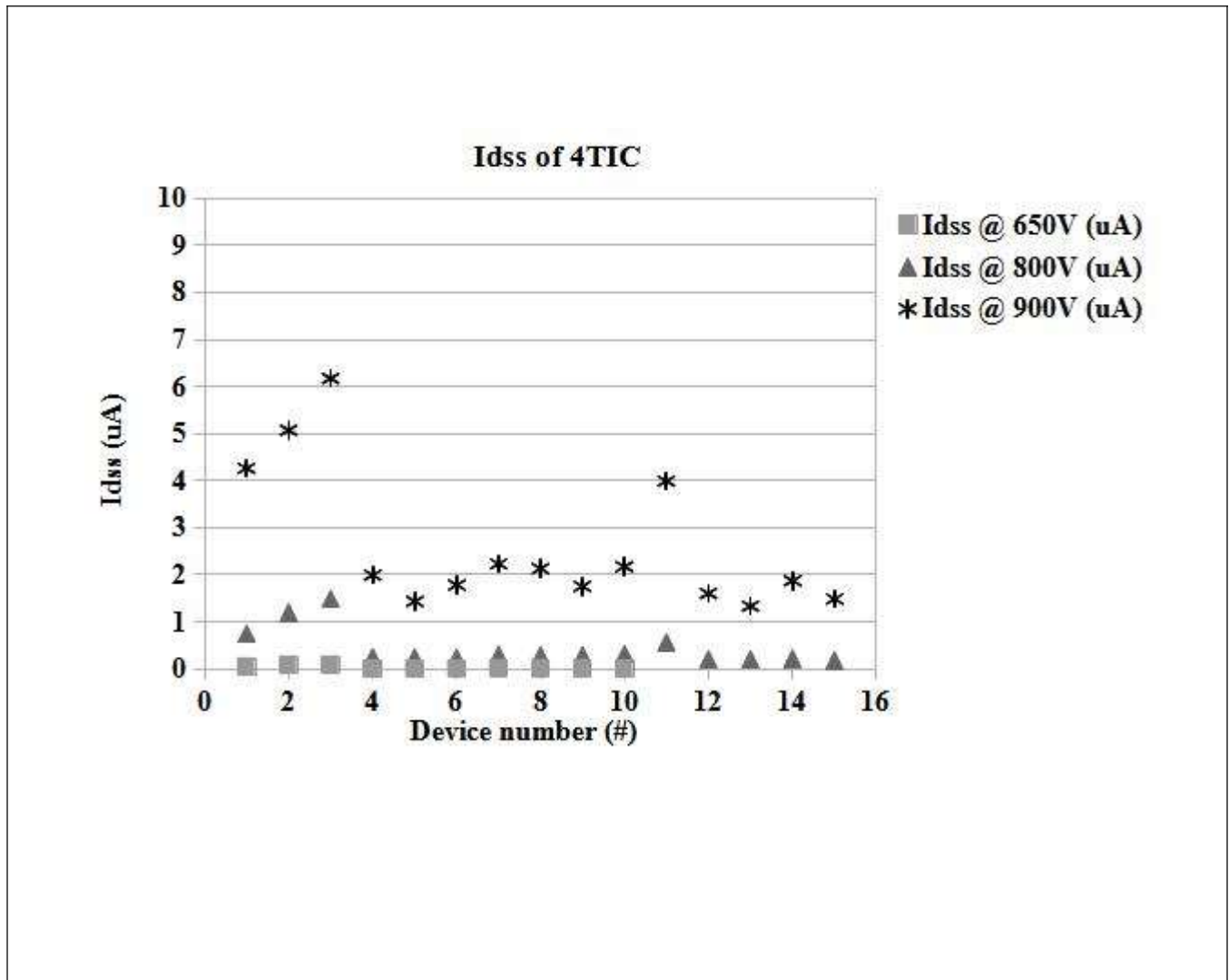
Description

These devices are power IC based on Power GaN HEMTs using proprietary E-mode GaN on silicon technology. The gate driver is integrated with the main power transistor resulting in fast switching, high system power density and low cost.

Device Characteristics

Basic Parameters				Test data			
	Parameters		Conditions	Min	Typical	Max	Unit
1	BV_{dss}	Drain-Source breakdown voltage	$V_{gs}=0V$ $I_d=10\mu A$	900			V
2	R_{dson}	Static drain-source on resistance, $T_C = 25^\circ C$	$V_{in}=6V,$ $V_{dd}=6.5V,$ $I_d=2.5A,$		85	105	$m\Omega$
3	R_{dson}	Static drain-source on resistance, $T_C = 125^\circ C$	$V_{in}=6V,$ $V_{dd}=6.5V,$ $I_d=2.5A,$		170		$m\Omega$
4	V_{dd}	Drive supply voltage		5	6.5	8	
5	V_{in}	PWM input pin voltage		3	5	8	
6	I_{ddq}	Drive supply (V_{dd}) quiescent leakage current	$V_{dd}=6.5V$		0.1		mA
Switching Performance				Test data			
	Parameters		Conditions	Min	Typical	Max	Unit
1	$t_{d(on)}$	Turn-on delay time	$V_{bus}=600V,$ $I_d=2A,$ $V_{in}=6.5V$ $V_{dd}=6.5V$		70		ns
2	t_r	Rise time			70		ns
3	$t_{d(off)}$	Turn-off delay time			30		ns
4	t_f	Fall time			70		ns

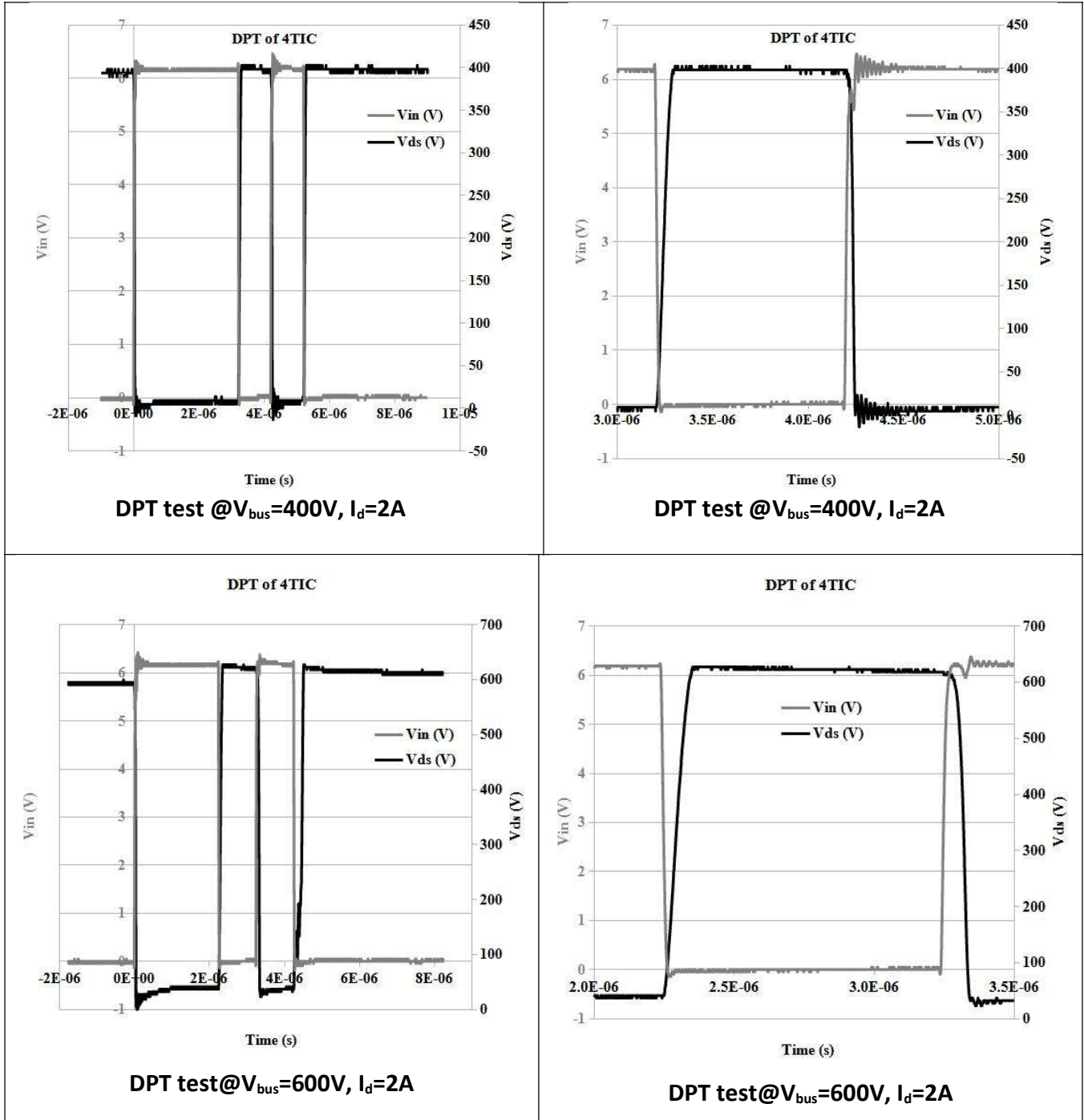
Electrical Performance

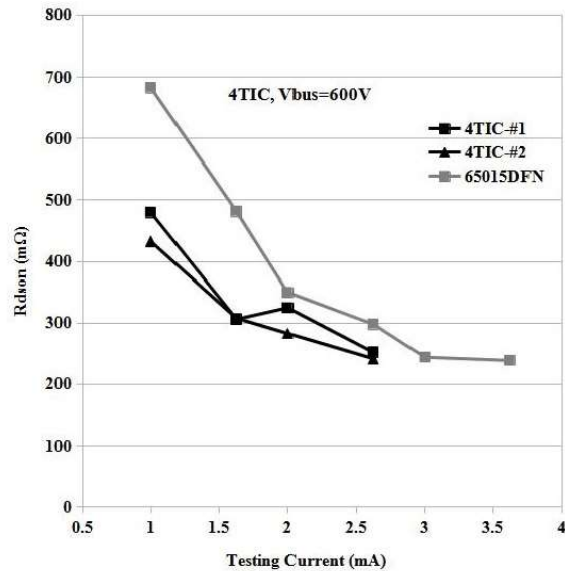
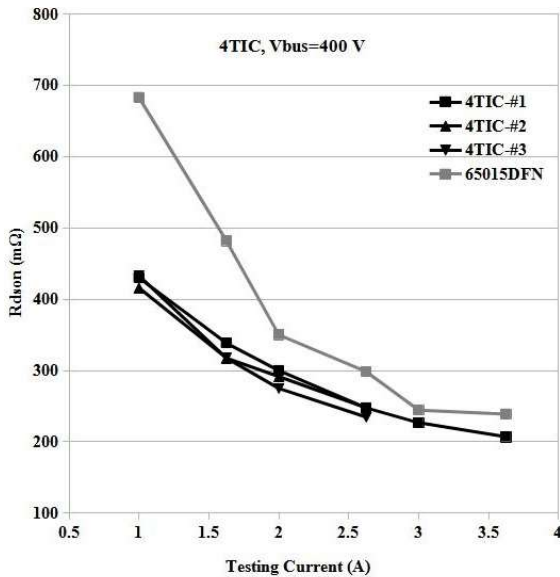
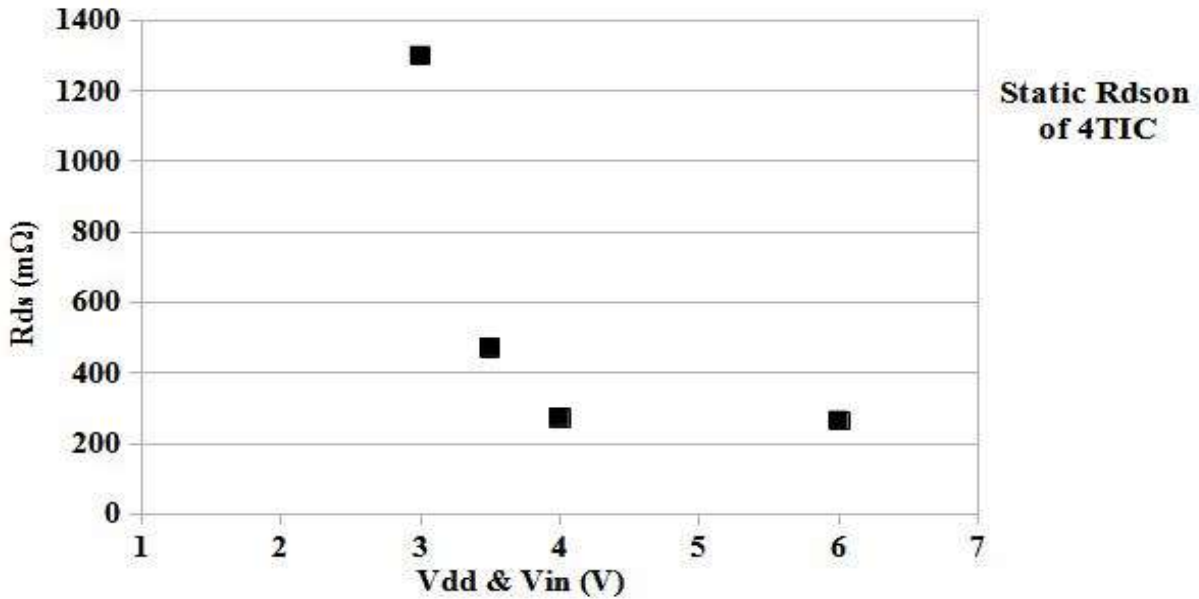




GaNPower International Inc.

WWW.IGANPOWER.COM
230 -3410 LOUGHEED HWY
VANCOUVER, BC, V5M 2A4 CANADA

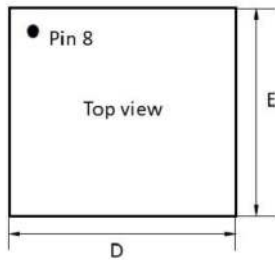




Dynamic Ron vs Testing Current @Vbus=400V, 600V

Note: Dynamic R_{dson} data were captured the moment just before the GaN Power ICs were turned off, in order to exclude any influence of ringing and overshooting. Normally the dynamic R_{dson} is measured at 1 μ s after IC turn-on.

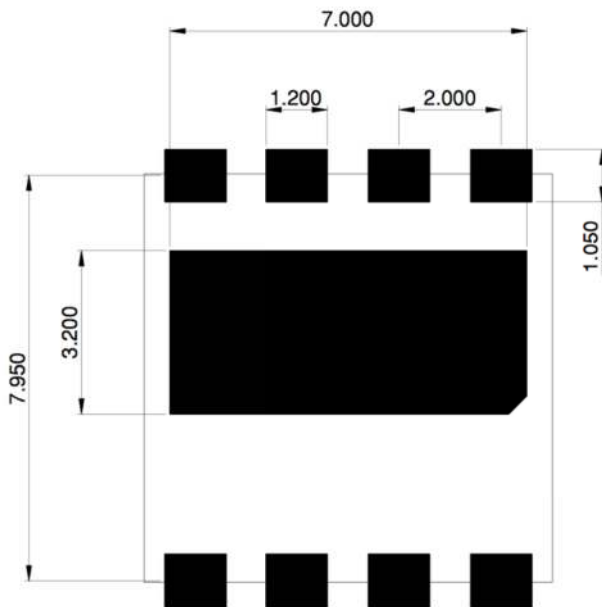
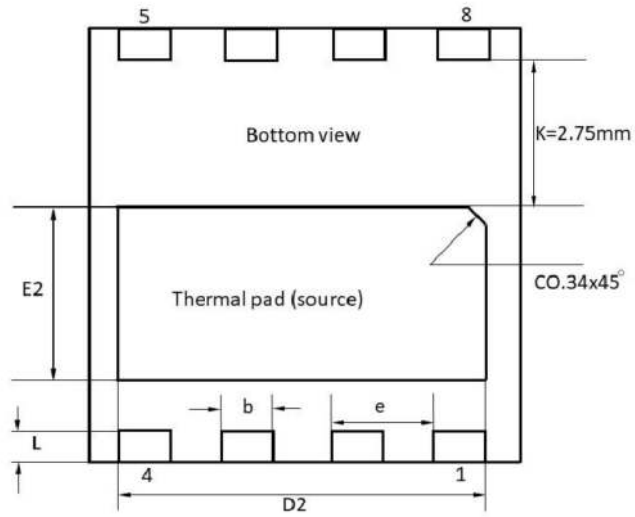
Package Information



D=8; E=8; e=1.95; b=0.97;
 L=0.57; D2=6.82; E2=3.19

8LEAD DFN (8x8x0.75mm,
 Pitch 1.95mm)

IMPORTANT: Please connect
 the bottom thermal pad to
 the source electrode on PCB



Land Pattern View

GaN HEMT Frequently Asked Questions

1	<p>Q: Can we do pin to pin switch for silicon MOSFET or IGBT?</p> <p>A: The short answer is no. GaN HEMT power devices are far superior than the best silicon devices such as super junction MOSFETs. However, due to different requirements of gate driving voltage and extremely high dv/dt slew rate, special drivers and optimized PCB layouts are recommended to minimize the impact from circuit parasitics.</p>
2	<p>Q: How do GaN power devices compare with SiC?</p> <p>A: Currently GaN power HEMT devices are most suitable for low to medium voltage ($\leq 1200V$) and power (<20KW) applications. GaN is the ideal choice for high frequency applications. SiC devices are better choice for high voltage and high-power applications (>20KW).</p>
3	<p>Q: Do we need to parallel an FRD for applications such as inverters?</p> <p>A: GaN devices are different from silicon MOSFET or IGBT in that they have no inherent PN junction diodes that cause reverse recovery issue. User do not need to parallel an FRD for the purpose of suppressing the body diode reverse recovery effect, since GaN HEMT can operate in both first and third quadrants. However, care should be taken for the dead time power loss since the Vsd voltage of GaN HEMT is usually close to 2V. This is especially true when a negative gate voltage is applied.</p>
4	<p>Q: Can we parallel GaN HEMT devices?</p> <p>A: Yes, GaN HEMT is ideal for paralleling, due to the positive temperature coefficient of $R_{ds,on}$. Hence, paralleling GaN HEMT devices are encouraged.</p>