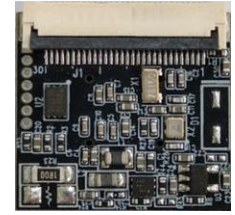
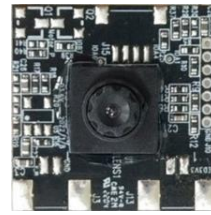
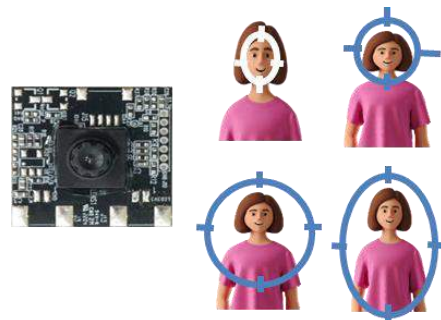


The module incorporate four different body part features, detecting and tracking of human face 、 head 、 head-and-shoulder and upper body. For example, in order to follow human behavior, this module is applied to the smart gimbal to track human continually.



- Detect and track human face 、 head 、 head-and-shoulder and upper body
- Real-time edge decision-making without network connection



### Application

---

- Smart gimbal
- Automatic tracking online meeting camera
- Distance learning

### Ratings / Specifications

---

#### Ratings

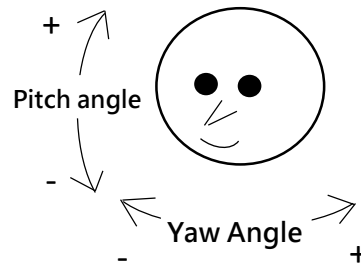
Item	Rated values
Supply voltage	3.3 VDC 5.0 VDC (Option)
Consumption current	<0.21 A
Operating temperature	0 to +50°C
Storage temperature	-30 to +70 °C

## Specifications

	Angle
Horizontal detection range (angle of view)	50°
Vertical detection range (angle of view)	50°



Angle Range	Pitch angle (up-down)	Yaw angle (left-right)
Face detection	±40°	±40°
Head detection	±30°	±90°
Head and shoulder detection	±30°	±30°
Upper body detection	±30°	±70°

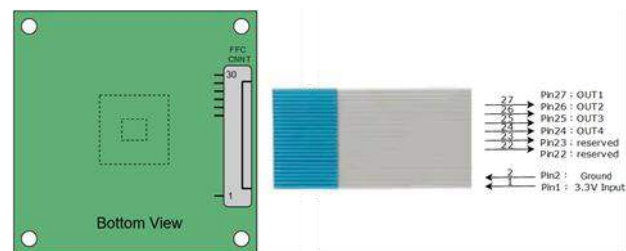


Host Communication Specifications	Specifications
Standard	GPIO

Detection Distance	Distance
Face detection	35-60 CM
Head detection	50-130 CM
Head and shoulder detection	80-200 CM
Upper body detection	80-250 CM

## Connector Pin Assignment

Pin No.	Pin Name	Human Tracking
Pin1	3.3V	Power Supply
Pin2	Ground	Ground
Pin22	Reserved	-
Pin23	Reserved	Head detection
Pin24	Out4	Face detection
Pin25	Out3	
Pin26	Out2	Head and shoulder
Pin27	Out1	Upper body



**Note.** Output level High (3.3V) active.

## Alternative Power Supply Input (Option)

Pin No.	Pin Name	Human Tracking
Pin1	5V	Power Supply
Pin4	Ground	Ground

