

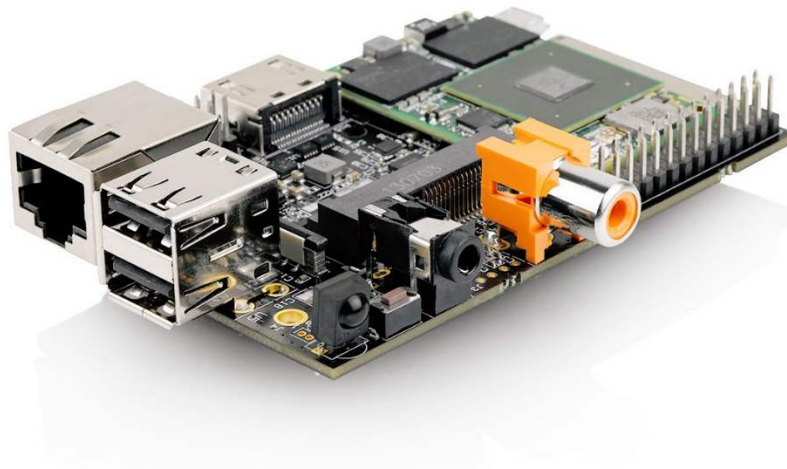


NXP-Freescale i.MX6

# HummingBoard Pro

Carrier Board for iMX6 SOM (System-On-Module)

Rev 3.5



Simple. Robust. Computing Solutions

**SolidRun Ltd.**

7 Hamada st.,

Yokne'am Illit, 2495900, Israel

[www.solid-run.com](http://www.solid-run.com)

## Overview

The Pro version of the HummingBoard carrier offers a valuable development platform with advanced capabilities (including multiple storage methods) in an embedded device. As opposed to the HummingBoard Base model, the HummingBoard pro focuses on larger file storage via mSATA, LVDS display integration, as well as extensibility through additional board access.

## HummingBoard Pro Highlighted Features

- ✿ Based on NXP's iMX6 Single to Quad Core
- ✿ Up to 2GB DDR3
- ✿ Small footprint
- ✿ Robust design

## System Specifications

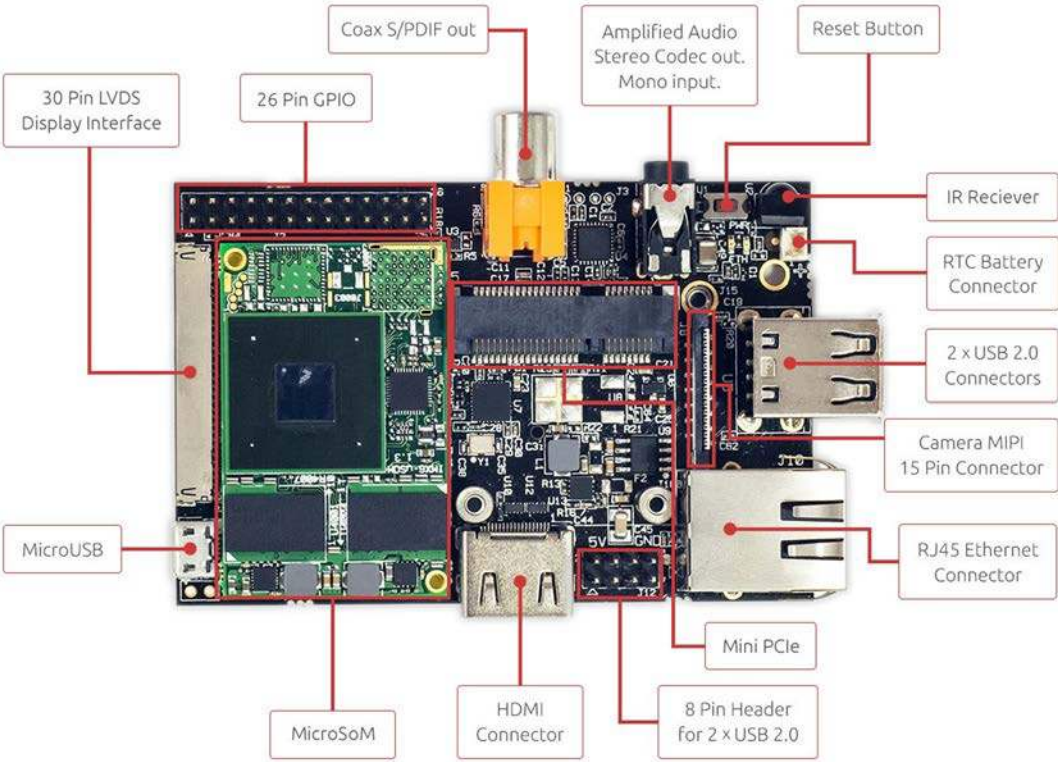
HummingBoard Pro	
<b>SOM Model</b>	i.MX6 based Solo to Quad Core SOM
<b>Memory and Storage</b>	Up to 2GB DDR3 uSD mSATA*
<b>Connectivity</b>	1×RJ-45** 2×Host USB 2.0
<b>Media</b>	HDMI-Out SPDIF MIPI-CSI-2 Camera
<b>I/O</b>	Reset Button, 26 pins GPIO Header
<b>Power</b>	5V, uUSB
<b>Software</b>	Android, Linux
<b>Dimensions (W×L)</b>	85mm×56mm

(\*) Supported with SOM i2eX and above.

(\*\*) Note that due to internal i.MX6 buses the 1000Mbps interface speed is limited to 470Mbps.

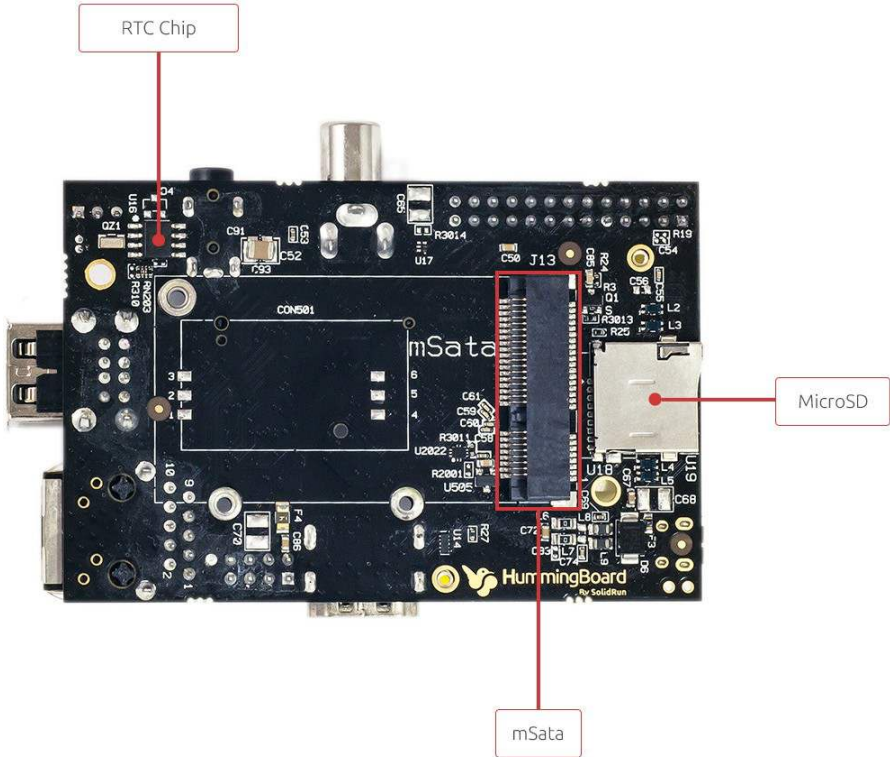
# Interfaces

## Top View



# Interfaces

## Bottom View



## Available SKUs for HummingBoard Pro

SKU	Description
SRHBCPE000CV35	HummingBoard Pro   Com. Temp   R3.5

## Safety Notice

- a. This device is to be used with Certified Power adaptor with output rated 5VDC, 3A. Power adapter must meet Limited power source (LPS) requirements.
- b. Power adapter must meet local safety standards and requirements based on product intended use.
- c. Power adapter must meet Operating environment conditions as specified above.

## Disposal

Follow local regulations regarding disposal of the product. Dispose of your product in accordance with local regulations. In some areas, the disposal of these items in household or business trash may be prohibited.

Help us protect the environment- recycle!

## IMPORTANT NOTICE – Please Read Carefully

No warranty of accuracy is given concerning the contents of the information contained in this document. To the extent permitted by law no liability (including liability to any person by reason of negligence) will be accepted by SolidRun Ltd. Or its employees for any direct or indirect loss or damage caused by omissions from or inaccuracies in this document.

SolidRun Ltd. Reserves the right to change details in this publication without notice

Product and company names herein may be the trademarks of their respective owners.

Information in this document supersedes and replaces information previously supplied in any prior versions of this document.

## Support

For technical support please visit:

Our Wiki – <http://wiki.solid-run.com/>

Our Forums - <http://forum.solid-run.com/>

For direct support please contact us at: [support@solid-run.com](mailto:support@solid-run.com)

## Documentation

Additional documentation available at:

<http://wiki.solid-run.com/doku.php?id=products:imx6:documents>