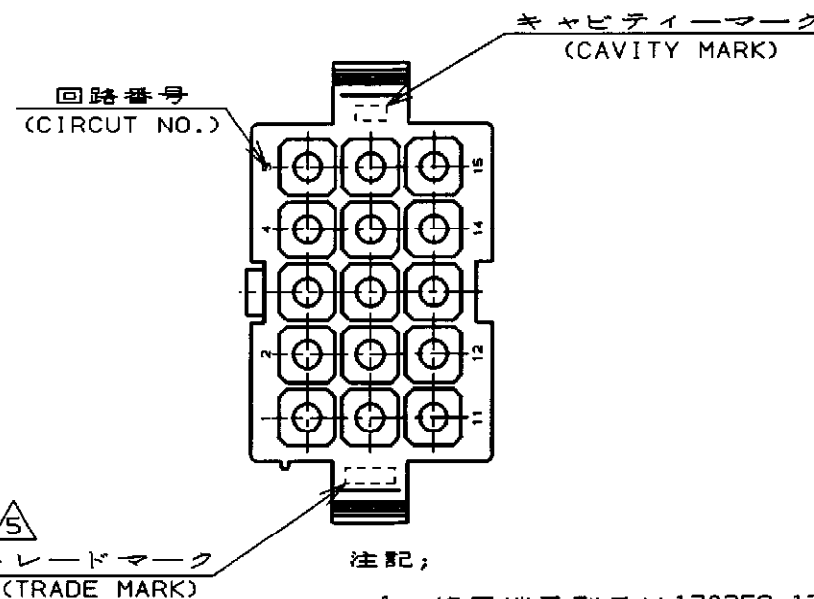
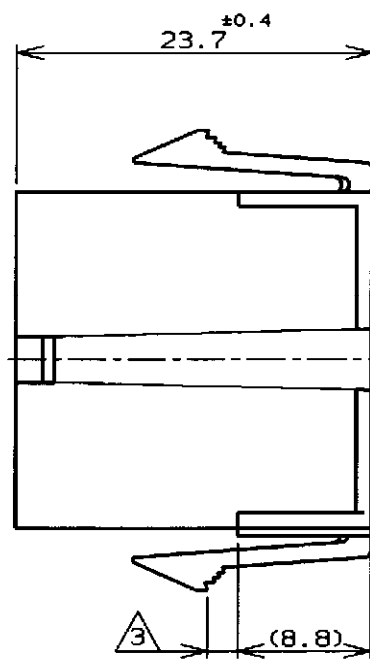
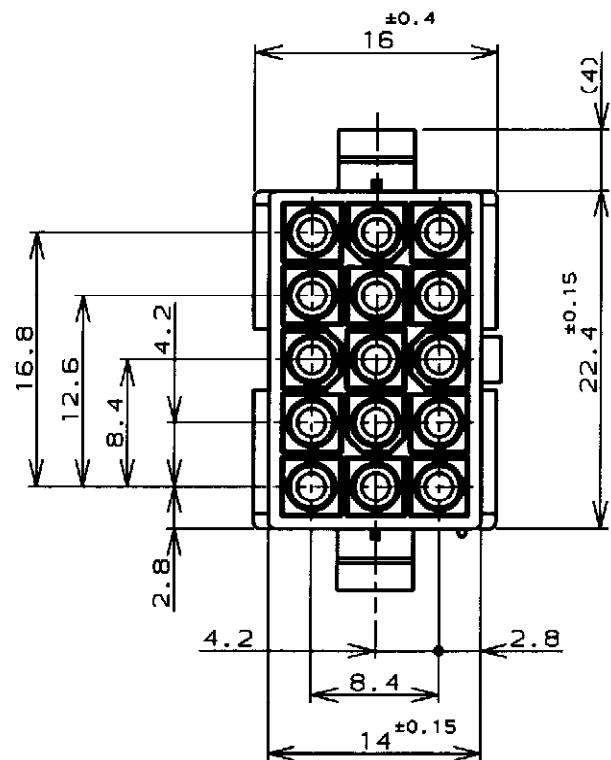
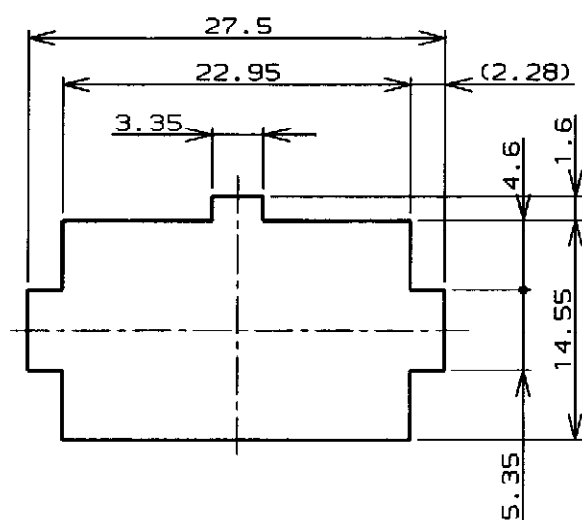


P	LTR	DESCRIPTION	DATE	DWN	APVD
C3		REVISED PER ECR-16-010553	05AUG2017	BW	SG



注記;

- 1. 使用端子型番は170359,170360,170361,170362
- 2. 嵌合相手ハウジング型番は172171
- ③ 適用パネル厚 0.8~2.0mm
- 4. 取付穴打抜方向とハウジングの挿入方向は同じとする。
- ⑤ 表1参照
- 1. APPLICABLE CONT P/N:170359,170360,170361,170362
- 2. MATING HSG P/N:172171
- ③ APPLICABLE PANEL THICKNESS:0.8~2.0mm
- 4. HOUSING INSERTION INTO THE PANEL CUT-OUT MUSTBE DONE IT THE SAME DIRECTION WITH PUNCH KNOCKING.
- ⑤ SEE TABLE1
- ⑥ OBSOLETE PARTS: OBSOLETE CIS STREAMLINING PER D.RENAUD/D.SINISI



寸法公差は±0.20 (TOLERANCE: ±0.20)

パネル取付穴 (RECOMENDED PANEL OPENING DIMENSION)

表1 (TABLE 1)

トレードマーク (TRADE MARK)	生産場所 (MANUFACTURING PLACES)
-AMP OR AMP	日本 (JAPAN)
-+AMP OR AMP	中国 (CHINA)(PRC)

⑥ OBSOLETE

黒 (BLACK)	1-172163-9
青 (BLUE)	1- - -6
緑 (GREEN)	1- - -5
赤 (RED)	1- - -2
自然色 (NATURAL)	172163-1
色 (COLOR)	型番 (P/N)
WIRE RANGE 包含電線断面積	INSULATION DIA 被覆外径

DIMENSIONS: 単位: 概 mm 	TOLERANCES UNLESS OTHERWISE SPECIFIED 一般公差 (GENERAL TOLERANCE) ±0.3	DWN M. Yamashita 8 Jun 98 CHK M. Shida 15 Jun 98 APVD M. Shida 15 Jun 98	TE Connectivity	
		MATERIAL 材料 66ナイロン UL94V-0 (66NYLON UL94V-0)		
CUSTOMER DRAWING		SCALE 2-1	SHEET 1 OF 1	REV C3