

SECTION X-X
SCALE 4:1

- NOTES:
- CARD SLOT ACCEPTS 1.27±0.10 MM MODULE THICKNESS. (MEASURED OVER P.C. PADS).
 - REFER TO PRODUCT SPEC. PS-87736-003 FOR PERFORMANCE SPECIFICATIONS.
 - RECOMMENDED MODULE LAYOUT SHALL BE PER MO-206.
 - RECOMMENDED PLATING ON MODULE PADS: 0.76 μM MIN HARD GOLD (Au) OVER 2.0 μM MIN NICKEL (Ni).
 - PRODUCT WILL HAVE DATE CODE STAMPED ON SIDE OF HOUSING.

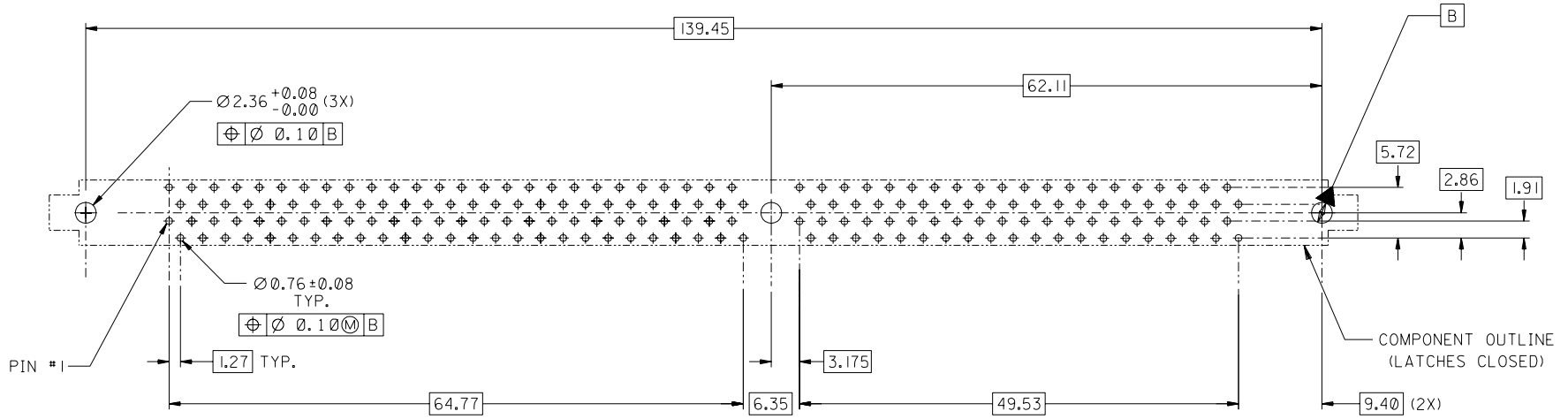
MATERIALS:
 HOUSING - HIGH TEMP THERMOPLASTIC
 TERMINAL- PHOSPHOR BRONZE
 LATCHES - HIGH TEMP THERMOPLASTIC

PLATING:
 CONTACT AREA: SEE TABLE IN SHEET 2.
 SOLDER TAILS: TIN-LEAD (Sn-Pb); THICKNESS=1.91 μM/(75 μIN) MIN.
 UNDERPLATE: 1.27 μM/(50 μIN) MIN NICKEL (Ni).

3	B2
2	B2
1	B2
SHT	REV

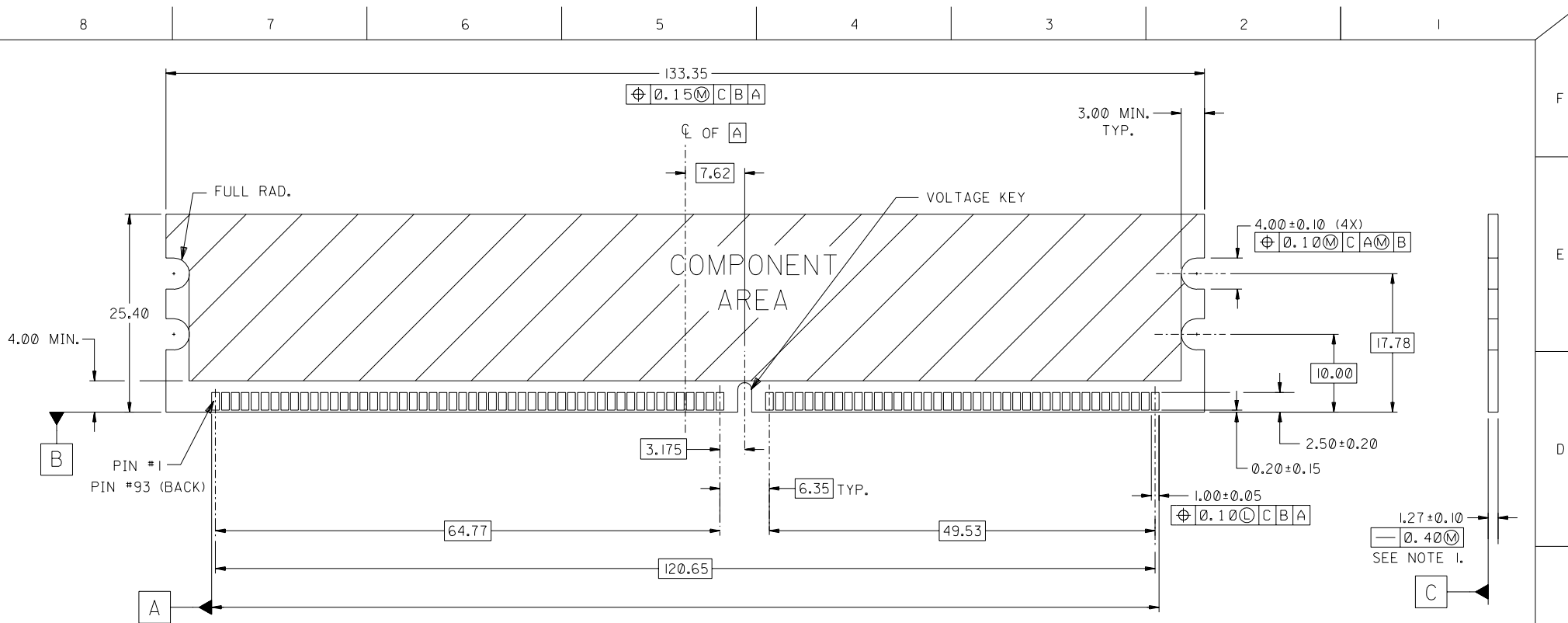
EC NO. S2003-0322 DRWN: COLYNN 050113 CHK: PT LIM 030115 APPR: KC LING 030115	QUALITY SYMBOLS MAJOR $\blacktriangledown = 0$ CRITICAL $\blacktriangledown = 0$	GENERAL TOLERANCES: (UNLESS SPECIFIED)		SCALE NTS	DESIGN UNITS <input checked="" type="checkbox"/> mm <input type="checkbox"/> INCH	THIRD ANGLE PROJECTION <input type="checkbox"/> mm INCH <input type="checkbox"/> INCH mm <input checked="" type="checkbox"/> mm ONLY	DIMENSIONS:		TITLE: 1.27 MM PITCH DDR DIMM 184 CKT SINGLE KEY SALES DRAWING
		4 PLACES $\pm 0. - \pm.$	mm INCH	DRAWN BY & DATE MEI LIN 10/05/00	REVISION ON CAD ONLY				
		3 PLACES $\pm 0. - \pm.$	mm INCH	CHECKED BY & DATE STEVEN Q 11/05/00	MOLEX INCORPORATED				
		2 PLACES $\pm 0. 15 \pm.$	mm INCH	APPROVED BY & DATE SK TOH 12/05/00	CAD FILENAME SD-87636-001.S01		MATERIAL NO. SEE TABLE	DRAWING NO. SD-87636-001	
1 PLACE $\pm 0. - \pm.$	mm INCH	ANGULAR: $\pm - \circ$	THIS DRAWING CONTAINS INFORMATION THAT IS PROPRIETARY TO MOLEX INCORPORATED AND SHOULD NOT BE USED WITHOUT WRITTEN PERMISSION.		SIZE A3				

PART NUMBER	DATUM VOLTAGE KEY	PACKAGING TYPE	DIM *T*	RECOMMENDED PCB THICKNESS	LATCH COLOR	CONTACT AREA PLATING
87636-0001	CENTER (1.8V)	TRAY	3.23	2.36	BEIGE	0.38uM/15uIN MIN. GOLD
87636-0002	LEFT (2.5V)					
87636-0011	CENTER (1.8V)		2.67	1.57		
87636-0012	LEFT (2.5V)					
87636-1001	CENTER (1.8V)		3.23	2.36	BLACK	0.76uM/30uIN MIN. GOLD
87636-1002	LEFT (2.5V)					
87636-1011	CENTER (1.8V)		3.23	2.36		
87636-1012	LEFT (2.5V)					
87636-0102	LEFT (2.5V)					



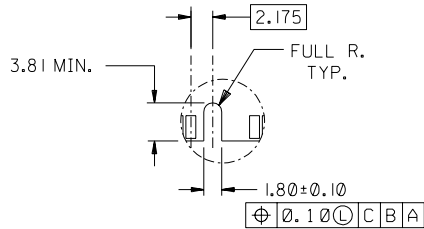
RECOMMENDED P.C. BOARD HOLE PATTERN
(CONNECTOR SIDE)

EC NO. S2003-0322 DRWN: COLYNN 030113 CHK: PT LIM 030115 APPR: KC LING 030115	QUALITY SYMBOLS MAJOR $\blacktriangledown = 0$ CRITICAL $\blacktriangledown = 0$	GENERAL TOLERANCES: (UNLESS SPECIFIED) <table border="1"> <thead> <tr> <th></th> <th>mm</th> <th>INCH</th> </tr> </thead> <tbody> <tr> <td>4 PLACES</td> <td>$\pm 0. -$</td> <td>$\pm .$</td> </tr> <tr> <td>3 PLACES</td> <td>$\pm 0. -$</td> <td>$\pm .$</td> </tr> <tr> <td>2 PLACES</td> <td>± 0.15</td> <td>$\pm .$</td> </tr> <tr> <td>1 PLACE</td> <td>$\pm 0. -$</td> <td>$\pm .$</td> </tr> </tbody> </table>		mm	INCH	4 PLACES	$\pm 0. -$	$\pm .$	3 PLACES	$\pm 0. -$	$\pm .$	2 PLACES	± 0.15	$\pm .$	1 PLACE	$\pm 0. -$	$\pm .$	SCALE NTS <input checked="" type="checkbox"/> mm <input type="checkbox"/> INCH	DESIGN UNITS <input checked="" type="checkbox"/> mm <input type="checkbox"/> INCH	THIRD ANGLE PROJECTION <input type="checkbox"/> mm <input type="checkbox"/> INCH <input checked="" type="checkbox"/> mm ONLY	SHT REV
				mm	INCH																
4 PLACES	$\pm 0. -$	$\pm .$																			
3 PLACES	$\pm 0. -$	$\pm .$																			
2 PLACES	± 0.15	$\pm .$																			
1 PLACE	$\pm 0. -$	$\pm .$																			
DESCRIPTION REV	DRAWN BY & DATE MEI LIN 10/05/00	CHECKED BY & DATE STEVEN Q 11/05/00	APPROVED BY & DATE SK TOH 12/05/00	TITLE: 1.27 MM PITCH DDR DIMM 184 CKT SINGLE KEY SALES DRAWING	MOLEX INCORPORATED	CAD FILENAME SD-87636-001.S02	MATERIAL NO. SEE TABLE	DRAWING NO. SD-87636-001	SHEET NO. 2 OF 3												
THIS DRAWING CONTAINS INFORMATION THAT IS PROPRIETARY TO MOLEX INCORPORATED AND SHOULD NOT BE USED WITHOUT WRITTEN PERMISSION.									SIZE A3												

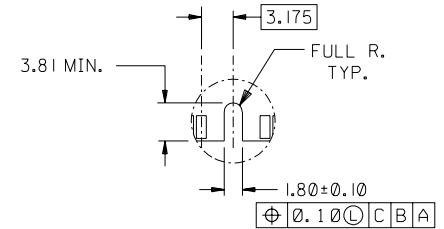


(OUTSIDE EDGE OF END PADS)

RECOMMENDED MODULE LAYOUT
184 CKT 1.8V SHOWN



OFFSET LEFT KEY



CENTERED KEY

NOTES:

- STRAIGHTNESS OF MODULE APPLIES TO THE AREA FROM THE BOTTOM OF THE CARD UP 4.00 MM.
- IF TIE BARS ARE ATTACHED TO PADS, THE TIE BAR SHOULD BE ON AN INTERNAL LAYER, SO THAT THE REMNANT CANNOT CAUSE DAMAGE TO THE CONTACTS.

EC NO. S2003-0322 DRWN: COL YNN 030113 CHK: PT LIM 030115 APPR: KC LING 030115	QUALITY SYMBOLS MAJOR ▽ = 0 CRITICAL ▽ = 0	GENERAL TOLERANCES: (UNLESS SPECIFIED)		SCALE NTS	DESIGN UNITS <input checked="" type="checkbox"/> mm <input type="checkbox"/> INCH	<input checked="" type="checkbox"/> THIRD ANGLE PROJECTION	DIMENSIONS: <input type="checkbox"/> mm <input type="checkbox"/> INCH <input checked="" type="checkbox"/> mm ONLY	SHT	REV	
		4 PLACES ±0. - ±.	3 PLACES ±0. - ±.	2 PLACES ±0.15 ±.	1 PLACE ±0. - ±.	ANGULAR: ± - °	DRAWN BY & DATE MEI LIN 10/05/00	TITLE: 1.27 MM PITCH DDR DIMM 184 CKT SINGLE KEY SALES DRAWING		
		APPROVED BY & DATE SK TOH 12/05/00			MATERIAL NO. SEE TABLE			DRAWING NO. SD-87636-001		
B2	REV	THIS DRAWING CONTAINS INFORMATION THAT IS PROPRIETARY TO MOLEX INCORPORATED AND SHOULD NOT BE USED WITHOUT WRITTEN PERMISSION.			SHEET NO. 3 OF 3			SIZE A3		