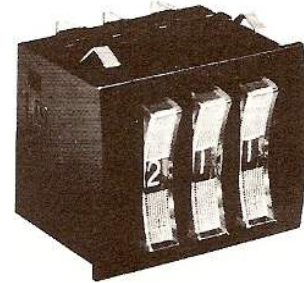




# Digital Rocker Switches

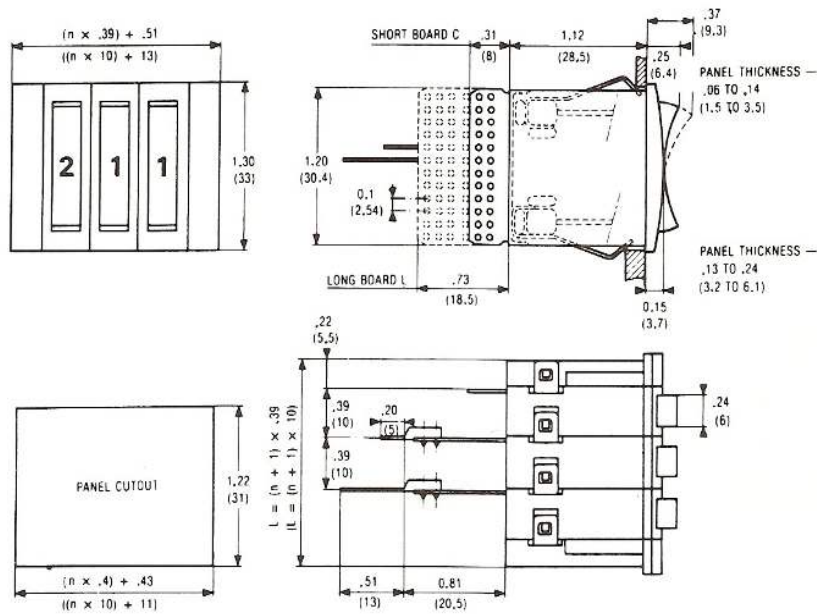


## Series 84 211

- Fast switching in both directions
- Large numerals – .18 in. (4.5 mm) high
- All modules easily assembled without hardware
- Good looking – easy to read

Mechanical & Electrical Specifications		Materials
<b>Operating Voltage:</b> .1 to 250 V AC .1 to 50 V DC <b>Nominal Electrical Load (Resistive Load):</b> .1 mA to 100 mA <b>Maximum Non-Switching Load:</b> 1 A <b>Contact Resistance:</b> 70 mΩ max. <b>Life at 50 V DC, .1 A, Resistive Load:</b> 1 million operations <b>Note:</b> For voltages and currents less than the above values, please contact us.	<b>Dielectric Strength:</b> 600 V <b>Operating Temperature:</b> -13° F. to 158° F. ( 25° C. to 70° C.) <b>Storage Temperature:</b> -40° F. to 185° F. (-40° C. to 85° C.) <b>Dial Character Dimensions:</b> .18 in. x .11 in. (4.5 mm x 2.8 mm) <b>Operating Force at End of Rocker:</b> 17 oz. (500 g)	<b>Case:</b> Noryl <b>Wheel:</b> Delrin <b>Rocker Actuator:</b> Makrolon* (Polycarbonate) <b>Contacts and Tracks:</b> Copper-Nickel-Gold <b>Brush:</b> Beryllium bronze <b>Printed Circuit Board:</b> Glass-filled epoxy (P.C. 75) *Special elements not used in other manufacturers products.

### Dimensions in inches (mm)



n = Number of modules

3



**Series 84 211**  
**Rocker Switch - standard - panel mount**

<b>Reference</b>	<b>84 211 0</b>	<b>1</b>
10 Digits Standard Module		
<b>Standard Codes (See Truth Tables)</b>		<b>2</b>
Decimal	01	/
BCD	02	
BCD & Complement	03	
2 Positions Repeating (+/-)	04	
2 Positions Repeating (5/0)	05	
BCD Complement	07	
BCD Excess 6 & Complement	08	
<b>Circuits</b>		<b>3</b>
Short	C	
Long	L	
<b>Case</b>		<b>4</b>
Black	N	
<b>Wheels</b>		<b>5</b>
Black	N	
<b>Connections</b>		<b>6</b>
Direct Soldering	1	:
Pins for Wire Wrapping	2	
Pins for PC Board Soldering	3	
<b>Dial Stops</b>		<b>7</b>
State the first and last digits. For Example 4/6 Digits locked out 0-1-2-3-7-8-9; usable 4-5-6		
<b>Mounting Accessories</b>		<b>8</b>
Pair of End Caps	79 211 847	
Spacer	79 211 836	
Separators (w/clips)	79 211 848	
<b>Connectors:</b>		
Wire Wrap Terminals without Lugs - X2	25 625 492	
Solder Terminals - W2	25 625 493	
Wire Wrap Terminals with Lugs - X2	25 625 494	
PC Board Solder Terminals - X3	25 625 495	
<b>To Order Specify: 1-2/3-4-5-6:7-8</b>		
For Example: 84 211 003/LNN1:4/6 with 79 211 847 84 211 0 switch with BCD & compliment code #3/long board with direct soldering #1 connections: Lock-out all numbers except 4, 5 & 6 and with a pair of end caps.		

**3**