

NPN Power Silicon Transistor

2N3715 & 2N3716



Features

- Available in JAN, JANTX, and JANTXV per MIL-PRF-19500/408
- TO-3 (TO-204AA) Package



Maximum Ratings

Ratings	Symbol	2N3715	2N3716	Units
Collector - Emitter Voltage	V_{CEO}	60	80	Vdc
Collector - Base Voltage	V_{CBO}	80	100	Vdc
Emitter - Base Voltage	V_{EBO}	7.0		Vdc
Base Current	I_B	4.0		Adc
Collector Current	I_C	10		Adc
Total Power Dissipation @ $T_A = 25\text{ }^\circ\text{C}$ ⁽¹⁾ @ $T_C = 25\text{ }^\circ\text{C}$	P_T	5.0		W
		117.0		W
Operating & Storage Junction Temperature Range	T_J, T_{stg}	-65 to +200		$^\circ\text{C}$

1) Derate linearly @ 28.57 mW / $^\circ\text{C}$ for $T_A > 25\text{ }^\circ\text{C}$

Thermal Characteristics

Characteristics	Symbol	Maximum	Units
Thermal Resistance, Junction-to-Case	$R_{\theta JC}$	1.5	$^\circ\text{C/W}$

Electrical Characteristics

OFF Characteristics		Symbol	Minimum	Maximum	Units
Collector - Emitter Breakdown Voltage $I_C = 10\text{ mAdc}$	2N3715	$V_{(BR)CEO}$	60	---	Vdc
	2N3716		80		
Collector - Base Cutoff Current $V_{CB} = 80\text{ Vdc}$ $V_{CB} = 100\text{ Vdc}$	2N3715	I_{CBO}	---	10	μAdc
	2N3716		10		
Emitter - Base Cutoff Current $V_{EB} = 7.0\text{ Vdc}$		I_{EBO}	---	1.0	mAdc
Collector - Emitter Cutoff Current $V_{BE} = -1.5\text{ Vdc}, V_{CE} = 60\text{ Vdc}$ $V_{BE} = -1.5\text{ Vdc}, V_{CE} = 80\text{ Vdc}$	2N3715	I_{CEX}	---	10	μAdc
	2N3716		10		
Collector - Emitter Cutoff Current $V_{CB} = 60\text{ Vdc}$ $V_{CB} = 80\text{ Vdc}$	2N3715	I_{CES}	---	10	μAdc
	2N3716		10		

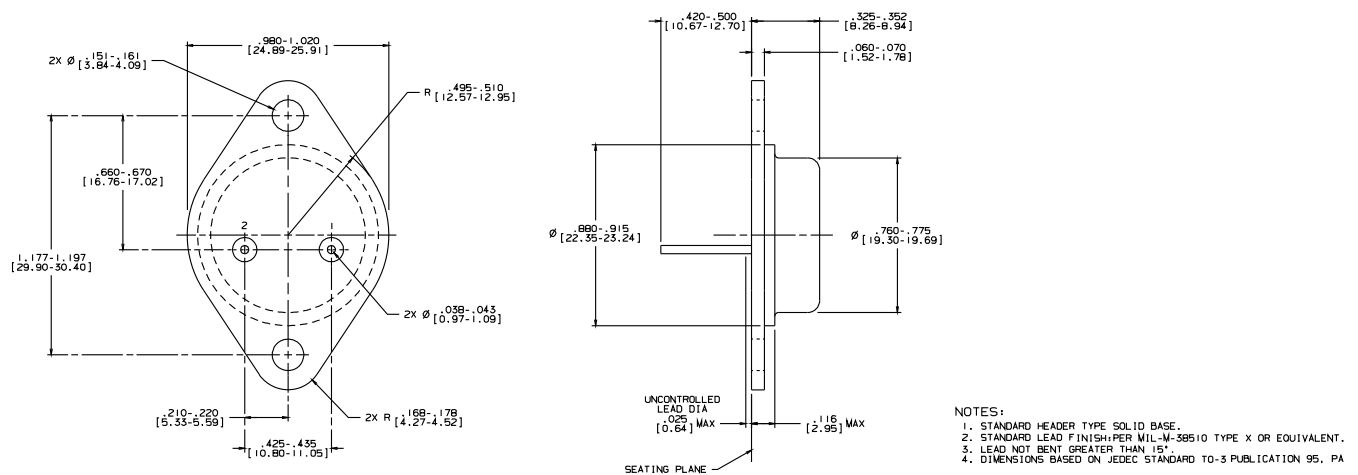


Electrical Characteristics -con't

ON Characteristics ⁽³⁾	Symbol	Mimumum	Maximum	Units
Forward Current Transfer Ratio $I_C = 1.0 \text{ Adc}, V_{CE} = 2.0 \text{ Vdc}$ $I_C = 3.0 \text{ Adc}, V_{CE} = 2.0 \text{ Vdc}$ $I_C = 5.0 \text{ Adc}, V_{CE} = 2.0 \text{ Vdc}$ $I_C = 10.0 \text{ Adc}, V_{CE} = 2.0 \text{ Vdc}$	H_{FE}	50 30 10 5	150 120 --- ---	
Collector - Emitter Saturation Voltage $I_C = 5.0 \text{ Adc}, I_B = 0.5 \text{ Adc}$ $I_C = 10.0 \text{ Adc}, I_B = 2.0 \text{ Adc}$	$V_{CE(sat)}$	--- ---	1.0 2.5	Vdc
Base - Emitter Saturation Voltage $I_C = 5.0 \text{ Adc}, I_B = 0.5 \text{ Adc}$ $I_C = 10.0 \text{ Adc}, I_B = 2.0 \text{ Adc}$	$V_{BE(sat)}$	--- ---	1.5 3.0	Vdc
DYNAMIC Characteristics				
Magnitude of Common Emitter Small-Signal Short-Circuit Forward Current Transfer Ratio $I_C = 0.5 \text{ Adc}, V_{CE} = 10.0 \text{ Vdc}, f = 1.0 \text{ kHz}$	$ h_{fe} $	4.0	20.0	
Forward Current Transfer Ratio $I_C = 0.5 \text{ Adc}, V_{CE} = 10.0 \text{ Vdc}, f = 1.0 \text{ MHz}$	h_{fe}	30	300	
Output Capacitance $V_{CB} = 10 \text{ Vdc}, I_E = 0, f = 1.0 \text{ MHz}$	C_{obo}	---	500	pF
SAFE OPERATING AREA				
DC Tests: $T_C = +25 \text{ }^\circ\text{C}, 1 \text{ Cycle}, t = 1.0 \text{ s}$ Test 1: $V_{CE} = 15.0 \text{ Vdc}, I_C = 10 \text{ Adc}$ Test 2: $V_{CE} = 40.0 \text{ Vdc}, I_C = 3.75 \text{ Adc}$ Test 3: $V_{CE} = 55.0 \text{ Vdc}, I_C = 0.9 \text{ Adc}$ 2N3715 $V_{CE} = 65.0 \text{ Vdc}, I_C = 0.9 \text{ Adc}$ 2N3716				

(3) Pulse Test: Pulse Width = 300 μs , Duty Cycle ~ 2.0 %.

Outline Drawing



Aeroflex / Metelics, Inc.

975 Stewart Drive,
Sunnyvale, CA 94085
Tel: (408) 737-8181
Fax: (408) 733-7645

Sales: 888-641-SEMI (7364)

Hi-Rel Components

9 Hampshire Street,
Lawrence, MA 01840
Tel: (603) 641-3800
Fax: (978) 683-3264

www.aeroflex.com/metelics-hirelcomponents

www.aeroflex.com/metelics metelics-sales@aeroflex.com

Aeroflex / Metelics, Inc. reserves the right to make changes to any products and services herein at any time without notice. Consult Aeroflex or an authorized sales representative to verify that the information in this data sheet is current before using this product. Aeroflex does not assume any responsibility or liability arising out of the application or use of any product or service described herein, except as expressly agreed to in writing by Aeroflex; nor does the purchase, lease, or use of a product or service from Aeroflex convey a license under any patent rights, copyrights, trademark rights, or any other of the intellectual rights of Aeroflex or of third parties.

Copyright 2012 Aeroflex / Metelics. All rights reserved.

ISO 9001: 2008 certified companies



Our passion for performance is defined by three attributes represented by these three icons: solution-minded, performance-driven and customer-focused.