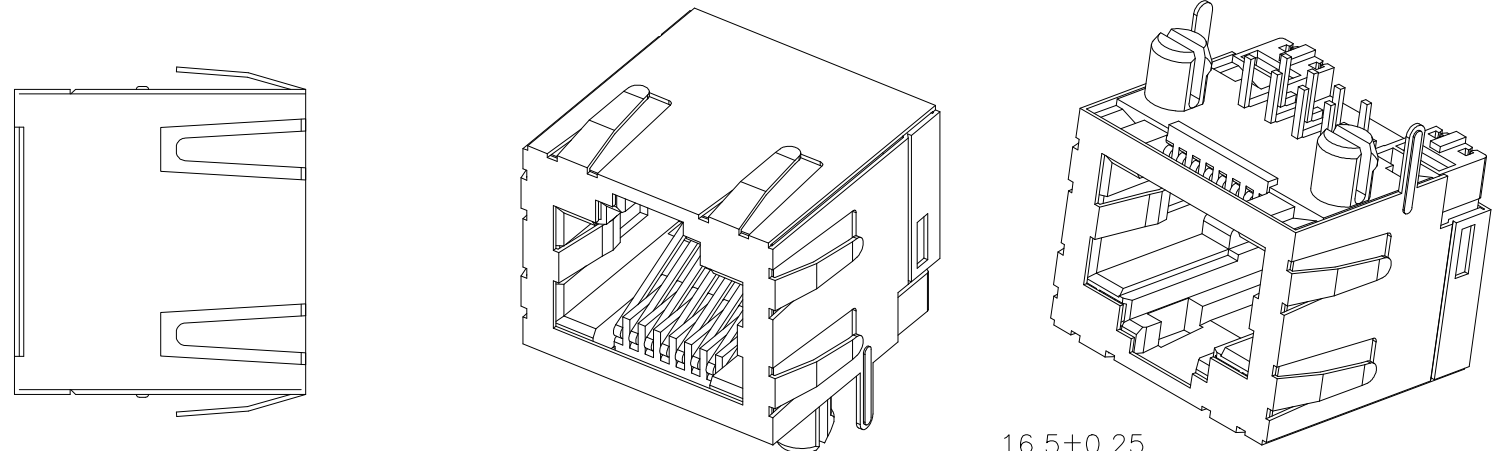
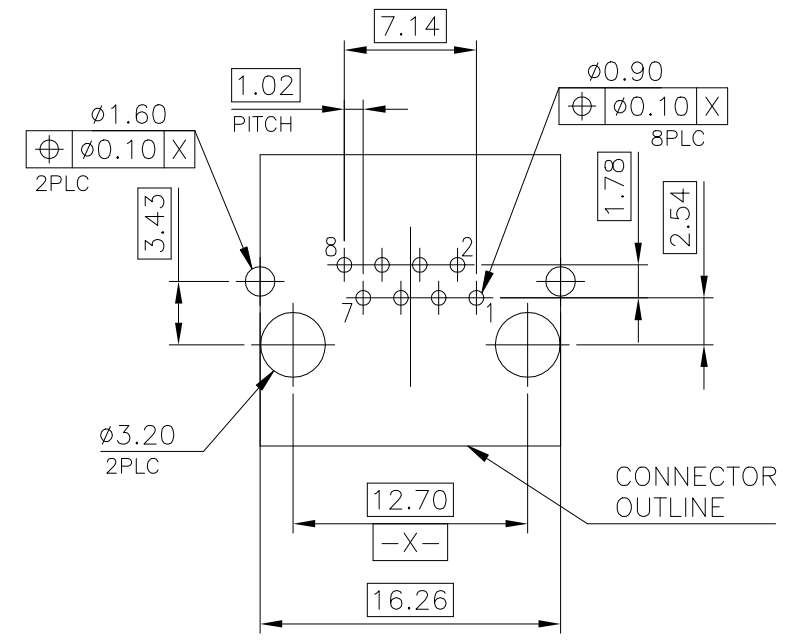
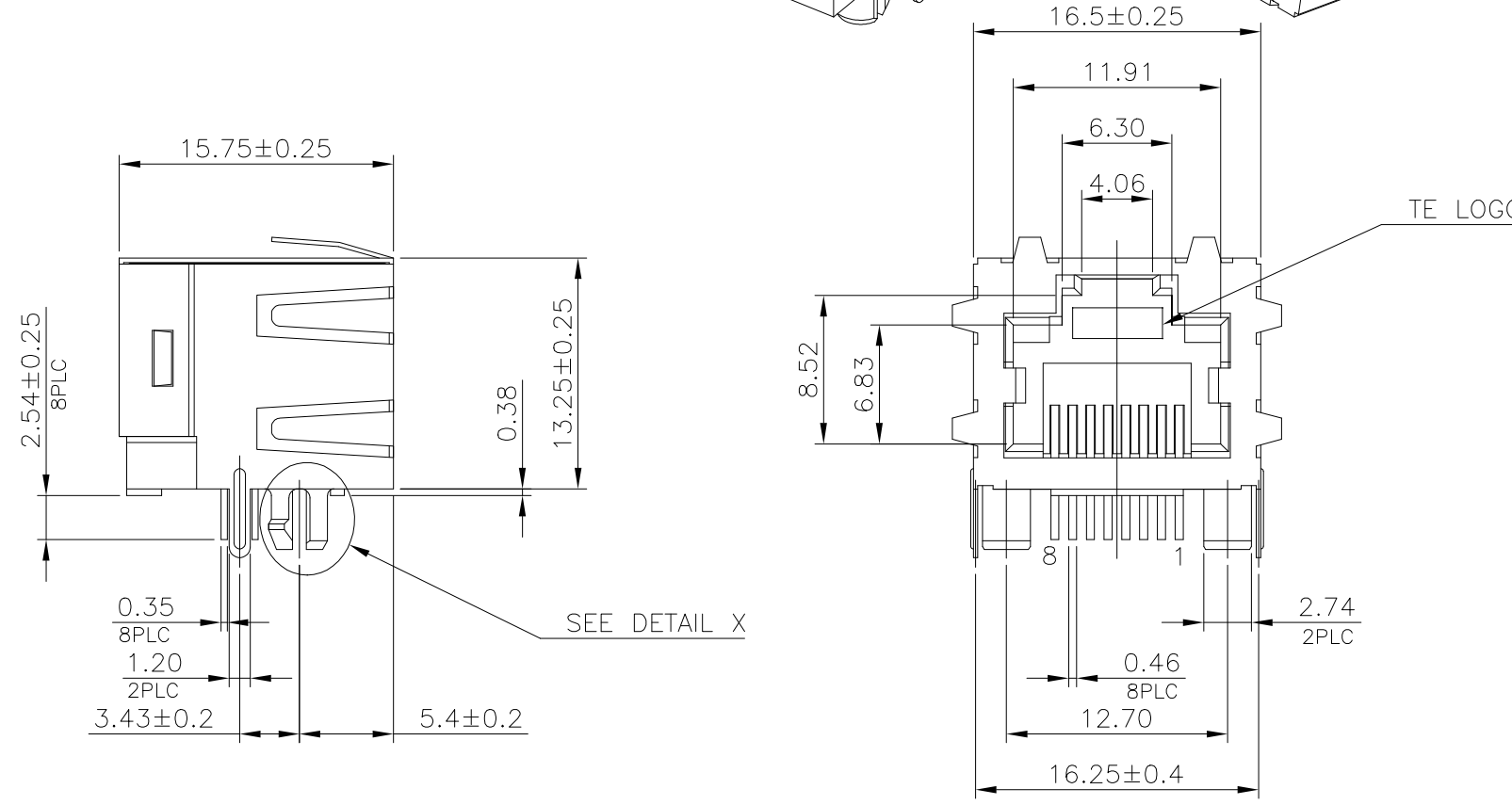


THIS DRAWING IS UNPUBLISHED. RELEASED FOR PUBLICATION
 © COPYRIGHT - By - ALL RIGHTS RESERVED.

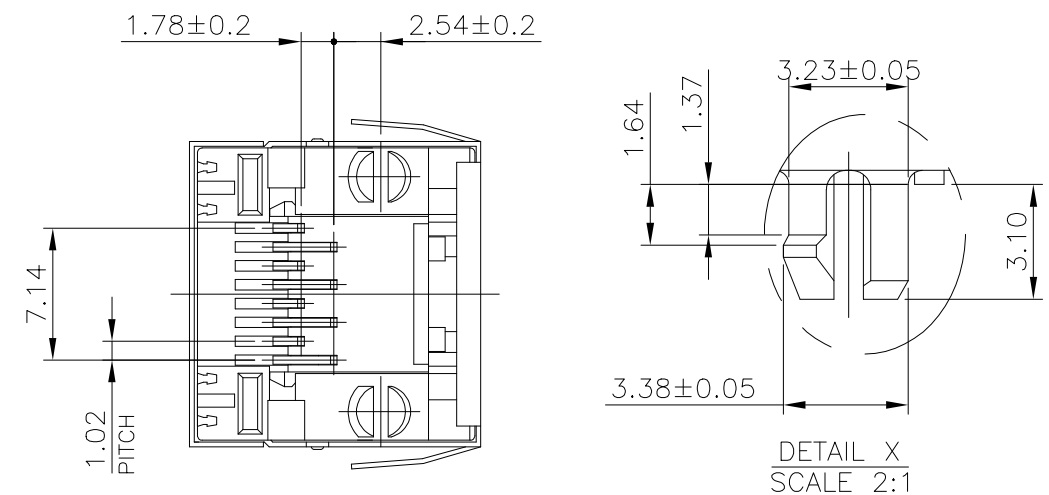
REVISIONS				
P	LTR	DESCRIPTION	DATE	APVD
B		ECO-16-018435	22DEC2016	SH



NOTE:
 1. MATERIAL:
 1.1 HOUSING: PA46, WITH 30% GF, UL94 V-0, BLACK COLOR.
 1.2 CONTACTS: PHOSPHOR BRONZE.
 1.3 SHELL: BRASS.
 2. FINISH:
 2.1 CONTACTS: (SEE TABLE) GOLD PLATED ON CONTACT AREA, GOLD FLASH ON SOLDER TAIL, 1.27um [50u"] MIN. NICKEL UNDERPLATED OVERALL.
 2.2 SHELL: 0.508um [20u"] MIN. NICKEL PLATED.
 3. WAVE SOLDER CAPABLE TO 265°C PER TEC-109-202, CONDITION B.
 ⚠️ OBSOLETE PARTS: OBSOLETE CIS STREAMLINING PER D.RENAUD/D.SINISI



RECOMMENDED PCB LAYOUT
 RECOMMENDED PCB THICKNESS: 1.6mm
 TOLERANCE: ±0.05 (TOP VIEW)



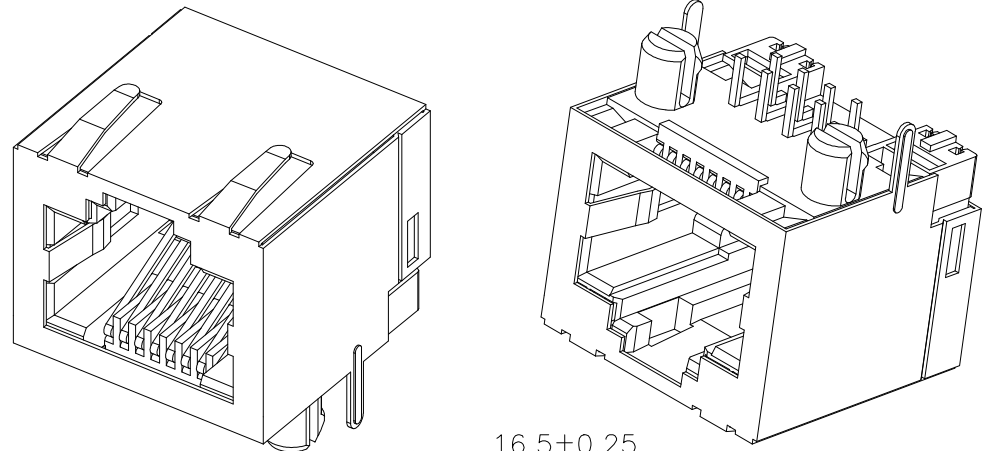
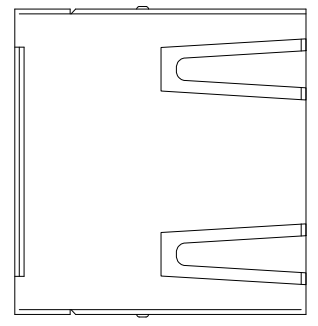
DETAIL X
 SCALE 2:1

OBSOLETE ⚠️	1.27um[50u"]	1775134-4
	0.76um[30u"]	4775134-3
	0.38um[15u"]	4775134-2
	0.15um[6u"]	1775134-1
	MIN. GOLD THICKNESS	PART NUMBER

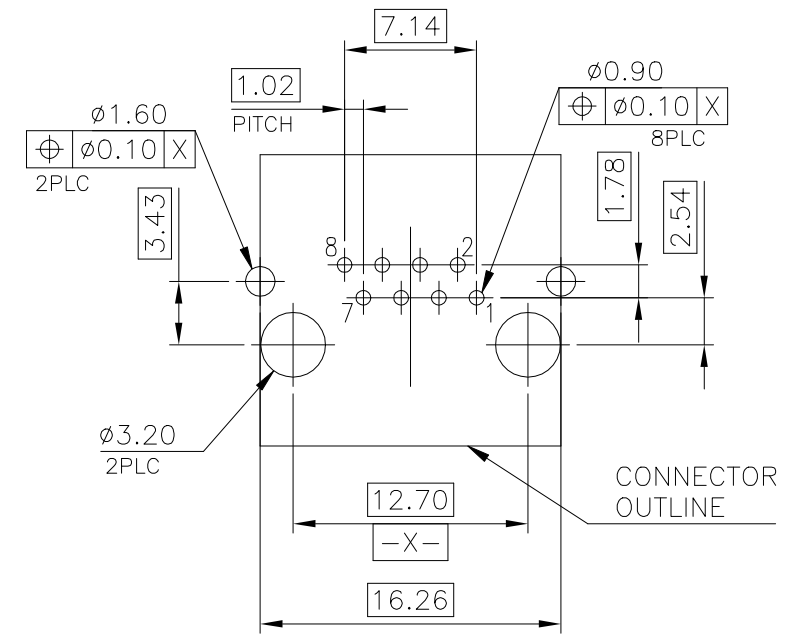
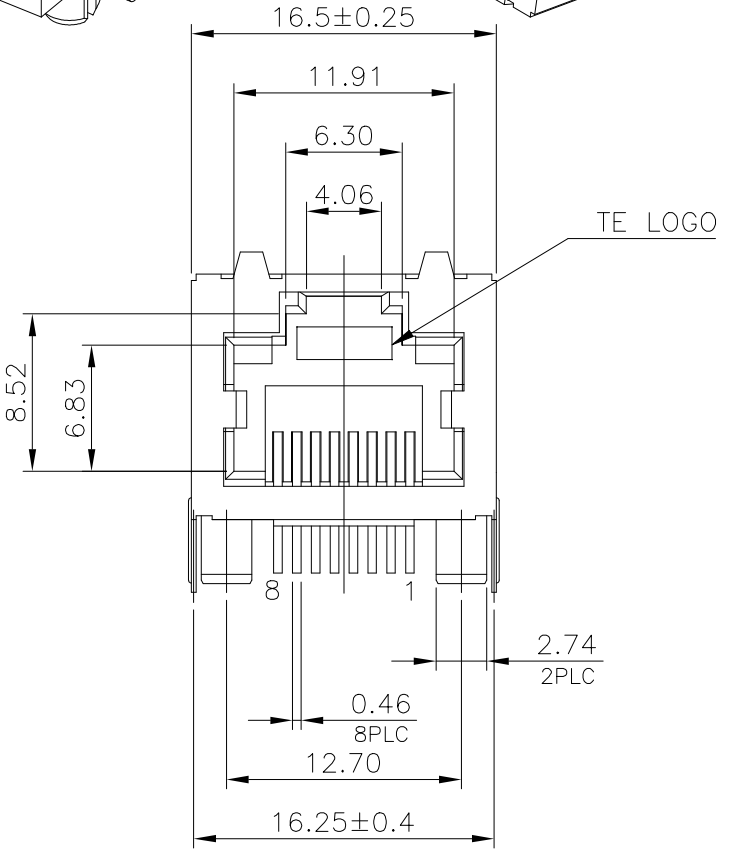
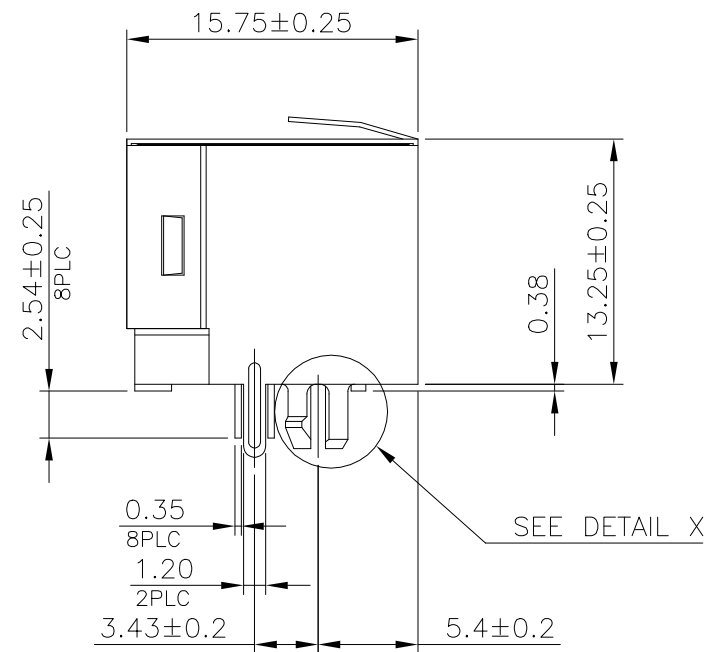
THIS DRAWING IS A CONTROLLED DOCUMENT.		DWN	O. HU	22OCT2007	TE Connectivity NAME MODULAR JACK, RJ45, SINGLE
DIMENSIONS: mm		CHK	S. HOU	22OCT2007	
TOLERANCES UNLESS OTHERWISE SPECIFIED:		APVD	W.J. KE	22OCT2007	
0 PLC ± - 1 PLC ± 0.3 2 PLC ± 0.2 3 PLC ± 0.15 4 PLC ± - ANGLES ± 3°		PRODUCT SPEC	108-57535		
MATERIAL SEE NOTE		FINISH	SEE NOTE		APPLICATION SPEC
		WEIGHT	-		SIZE
		CUSTOMER DRAWING			A3
					CAGE CODE
					00779
					DRAWING NO
					1775134
					RESTRICTED TO
					-
					SCALE
					1:1
					SHEET
					1 OF 4
					REV
					B

THIS DRAWING IS UNPUBLISHED. RELEASED FOR PUBLICATION
 © COPYRIGHT - By - ALL RIGHTS RESERVED.

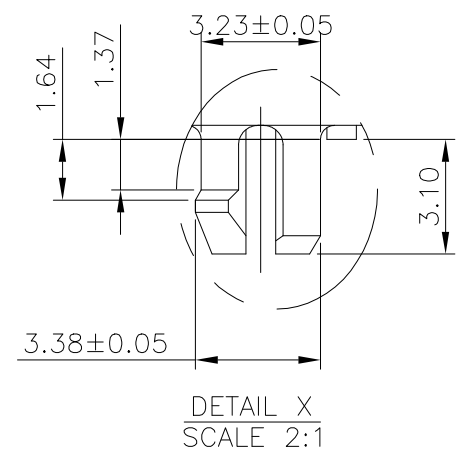
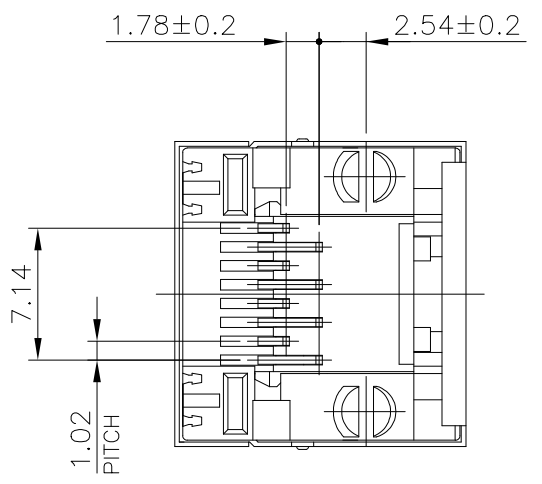
REVISIONS				
P	LTR	DESCRIPTION	DATE	APVD
-	-	SEE SHEET 1	-	-



NOTE:
 1. MATERIAL:
 1.1 HOUSING: PA46, WITH 30% GF, UL94V-0, BLACK COLOR.
 1.2 CONTACTS: PHOSPHOR BRONZE.
 1.3 SHELL: BRASS.
 2. FINISH:
 2.1 CONTACTS: (SEE TABLE) GOLD PLATED ON CONTACT AREA, GOLD FLASH ON SOLDER TAIL, 1.27um [50u"] MIN. NICKEL UNDERPLATED OVERALL.
 2.2 SHELL: 0.508um [20u"] MIN. NICKEL PLATED.
 3. WAVE SOLDER CAPABLE TO 265°C PER TE SPEC 109-202, CONDITION B.



RECOMMENDED PCB LAYOUT
 RECOMMENDED PCB THICKNESS: 1.6mm
 TOLERANCE: ±0.05 (TOP VIEW)



OBSOLETE A	1.27um[50u"]	1-1775134-4
	0.76um[30u"]	1-1775134-3
	0.38um[15u"]	1-1775134-2
	0.15um[6u"]	1-1775134-1
	MIN. GOLD THICKNESS	PART NUMBER

THIS DRAWING IS A CONTROLLED DOCUMENT.		DWN	O. HU	220CT2007	TE Connectivity NAME MODULAR JACK, RJ45, SINGLE
DIMENSIONS: mm		CHK	S. HOU	220CT2007	
TOLERANCES UNLESS OTHERWISE SPECIFIED:		APVD	W.J. KE	220CT2007	
0 PLC ± - 1 PLC ± 0.3 2 PLC ± 0.2 3 PLC ± 0.15 4 PLC ± - ANGLES ± 3°		PRODUCT SPEC		108-57535	
MATERIAL SEE NOTE		FINISH SEE NOTE		APPLICATION SPEC	SIZE
		WEIGHT		-	CAGE CODE
		CUSTOMER DRAWING		-	DRAWING NO
				-	RESTRICTED TO
				-	SCALE
				-	SHEET
				-	REV
				-	1:1
				-	2 of 4
				-	B

THIS DRAWING IS UNPUBLISHED.

RELEASED FOR PUBLICATION

ALL RIGHTS RESERVED.

© COPYRIGHT - By -

REVISIONS

P	LTR	DESCRIPTION	DATE	DWN	APVD
-	-	SEE SHEET 1	-	-	-

NOTE:

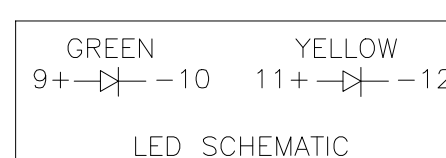
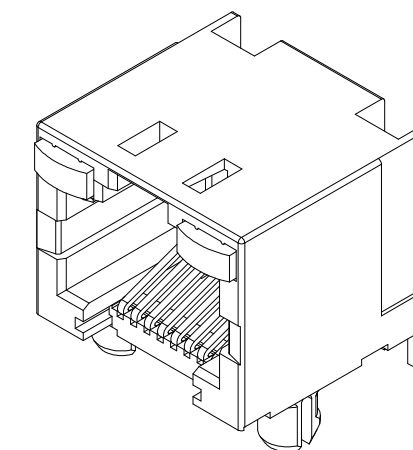
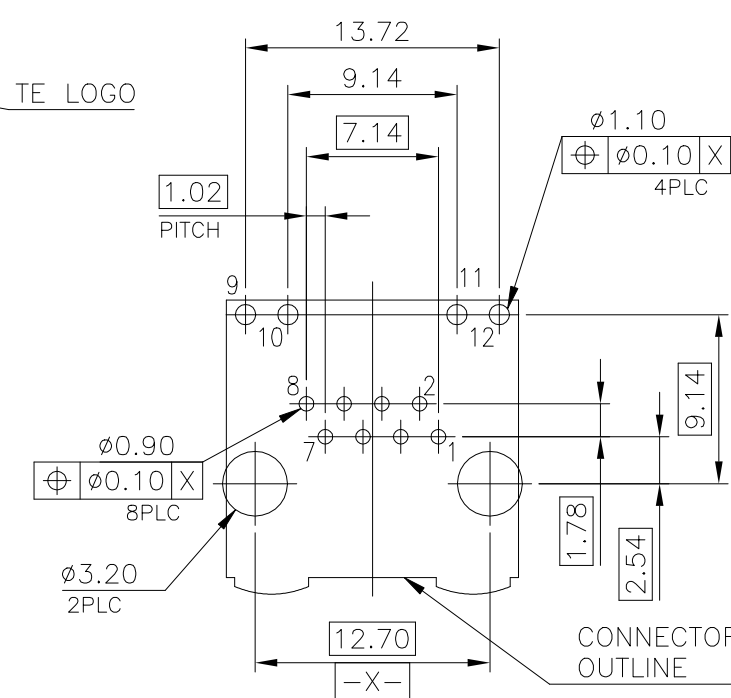
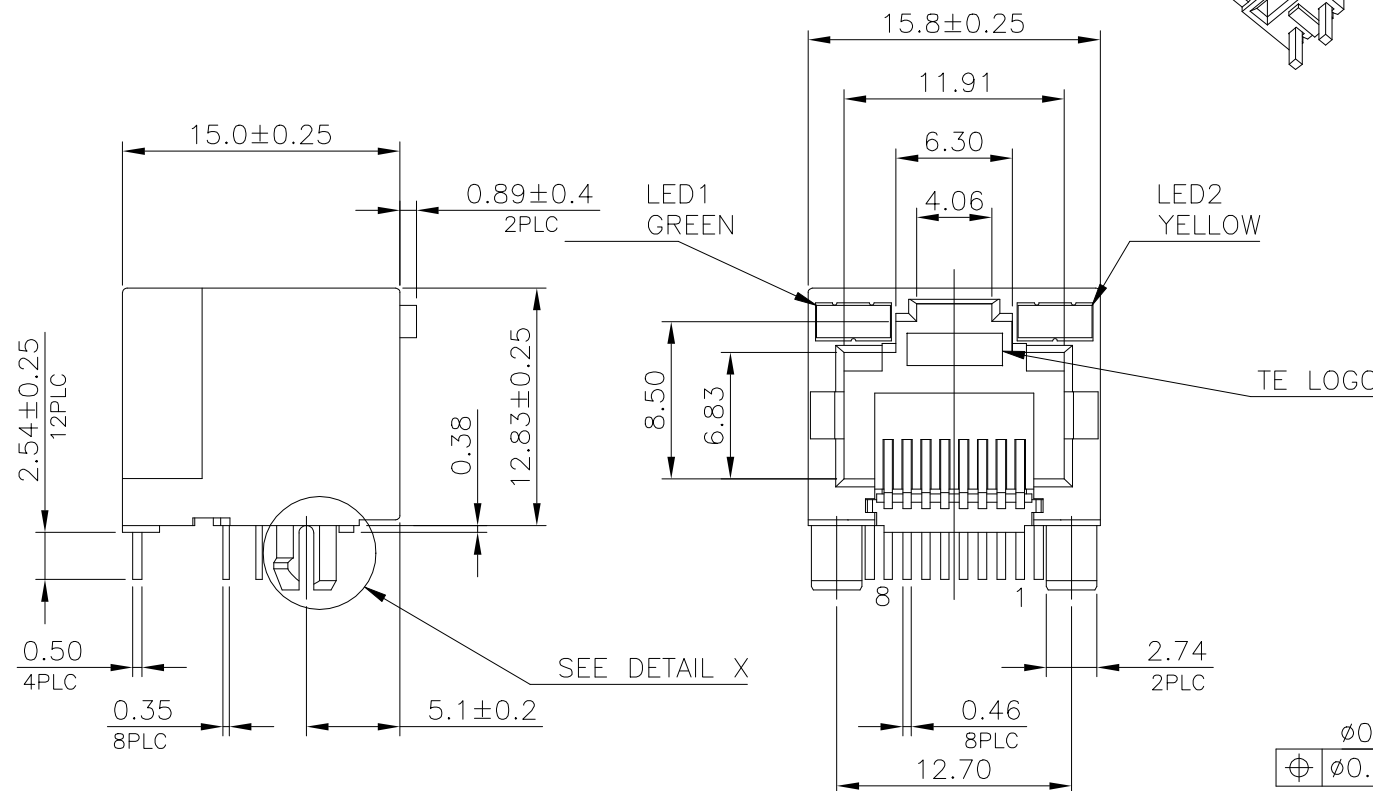
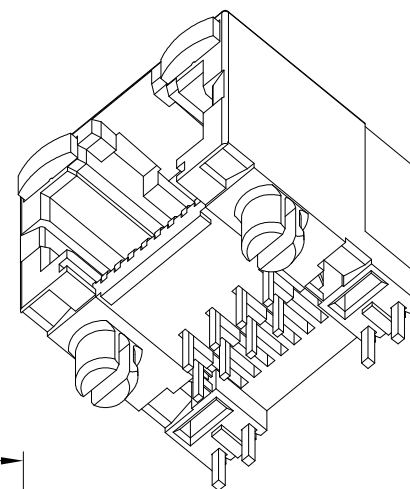
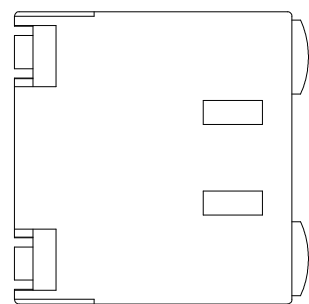
1. MATERIAL:

- 1.1 HOUSING: PA46, WITH 30% GF, UL94V-0, BLACK COLOR.
- 1.2 CONTACTS: PHOSPHOR BRONZE.
- 1.3 LED SOLDER TAIL: EPOXY, STEEL.

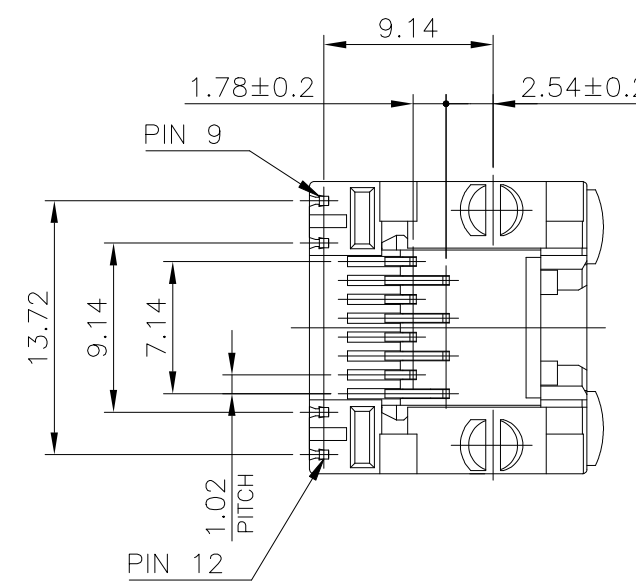
2. FINISH:

- 2.1 CONTACTS: (SEE TABLE) GOLD PLATED ON CONTACT AREA, GOLD FLASH ON SOLDER TAIL, 1.27um [50u"] MIN. NICKEL UNDERPLATED OVERALL.
- 2.2 LED: 1.016um [40u"] COPPER UNDERPLATED OVERALL. 1.27um [50u"] NICKEL OVERALL. 1.27um [50u"] SILVER ON BONDING AREA. 2.032um [80u"] BRIGHT-TIN ON SOLDER AREA.

3. WAVE SOLDER CAPABLE TO 265°C PER TE SPEC 109-202, CONDITION B.



MIN. GOLD THICKNESS	PART NUMBER
1.27um[50u"]	2-1775134-4
0.76um[30u"]	2-1775134-3
0.38um[15u"]	2-1775134-2
0.15um[6u"]	2-1775134-1



THIS DRAWING IS A CONTROLLED DOCUMENT.		DWN	O. HU	22OCT2007	 TE Connectivity	NAME	MODULAR JACK, RJ45, SINGLE									
DIMENSIONS: mm		CHK	S. HOU	22OCT2007			PRODUCT SPEC 108-57535	SIZE	CAGE CODE	DRAWING NO	RESTRICTED TO					
TOLERANCES UNLESS OTHERWISE SPECIFIED:		APVD	W.J. KE	22OCT2007								APPLICATION SPEC	-	-	-	-
MATERIAL		FINISH	SEE NOTE	SEE NOTE												
SEE NOTE		SEE NOTE		CUSTOMER DRAWING		SCALE	1:1	SHEET	3 of 4	REV	B					

THIS DRAWING IS UNPUBLISHED.

RELEASED FOR PUBLICATION

ALL RIGHTS RESERVED.

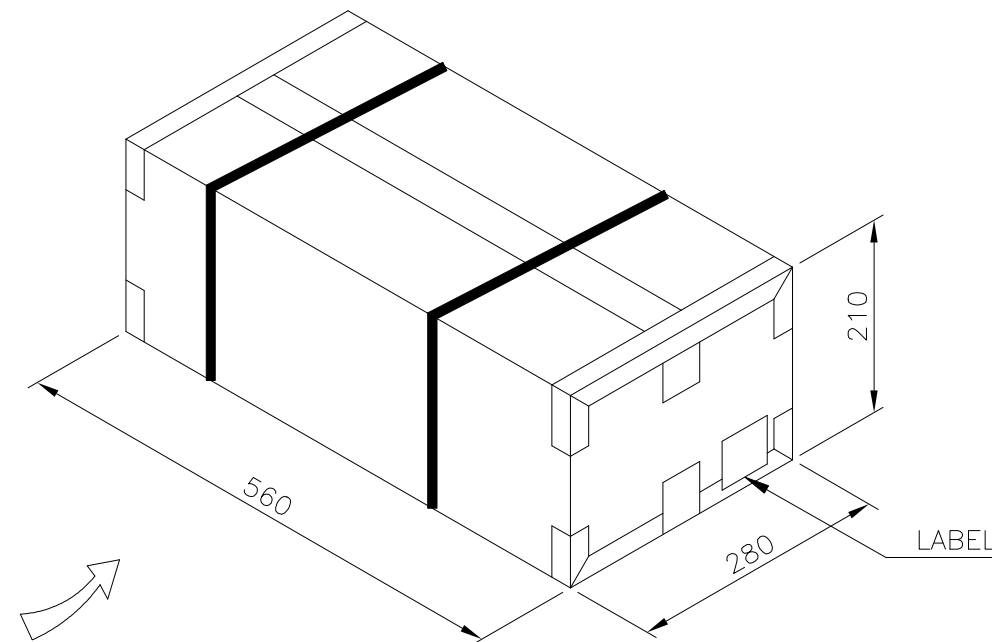
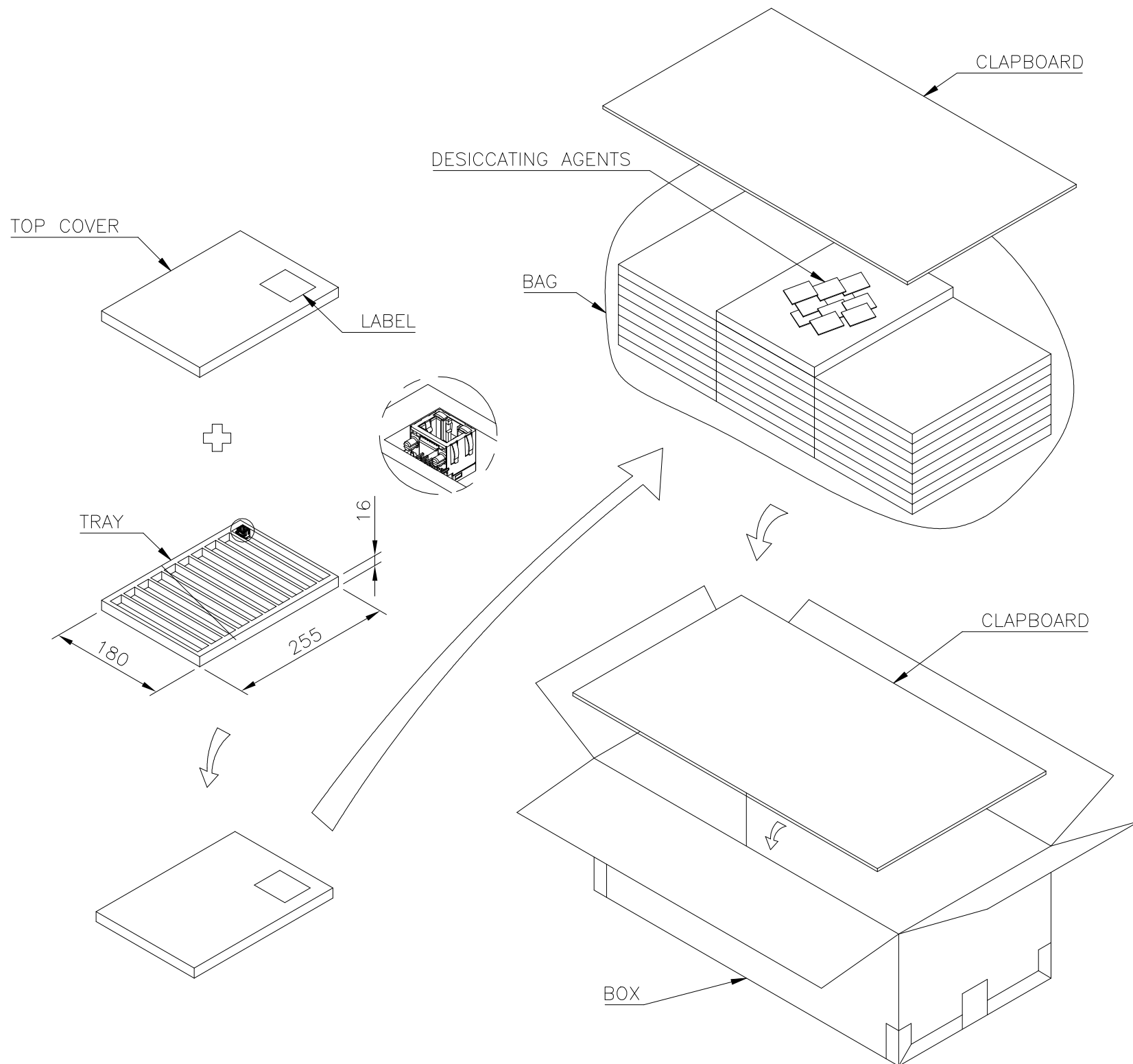
© COPYRIGHT - By -

REVISIONS

P	LTR	DESCRIPTION	DATE	DWN	APVD
-	-	SEE SHEET 1	-	-	-

NOTES:

- MATERIAL:
TRAY: PVC.
CARTON: CORRUGATED FIBER.
BOX: CORRUGATED FIBER.
- DIMENSION: SEE DRAWING
- QUANTITY: SEE TABLE
- WEIGHT: SEE TABLE



8.26 KG	7.26 KG	100	25	2500	2-1775134-X
14.15 KG	12.15 KG	90		2250	1-1775134-X
12.7 KG	10.7 KG				1775134-X
GROSS WEIGHT	NET WEIGHT	PCS/TRAY	TRAY/BOX	PCS/BOX	PART NUMBER

THIS DRAWING IS A CONTROLLED DOCUMENT.		DWN	O. HU	22OCT2007	TE TE Connectivity											
DIMENSIONS: mm		CHK	S. HOU	22OCT2007												
TOLERANCES UNLESS OTHERWISE SPECIFIED:		APVD	W.J. KE	22OCT2007												
<table border="0"> <tr><td>0 PLC</td><td>± -</td></tr> <tr><td>1 PLC</td><td>± 0.3</td></tr> <tr><td>2 PLC</td><td>± 0.2</td></tr> <tr><td>3 PLC</td><td>± 0.15</td></tr> <tr><td>4 PLC</td><td>± -</td></tr> <tr><td>ANGLES</td><td>± 3'</td></tr> </table>		0 PLC	± -	1 PLC		± 0.3	2 PLC	± 0.2	3 PLC	± 0.15	4 PLC	± -	ANGLES	± 3'	NAME	
0 PLC	± -															
1 PLC	± 0.3															
2 PLC	± 0.2															
3 PLC	± 0.15															
4 PLC	± -															
ANGLES	± 3'															
MATERIAL: SEE NOTE		FINISH: SEE NOTE		PRODUCT SPEC: 108-57535	APPLICATION SPEC: -											
		WEIGHT	0	SIZE: A3	CAGE CODE: 00779											
		CUSTOMER DRAWING		DRAWING NO: 1775134	RESTRICTED TO: -											
		SCALE	1:1	SHEET	4 OF 4											
				REV	B											