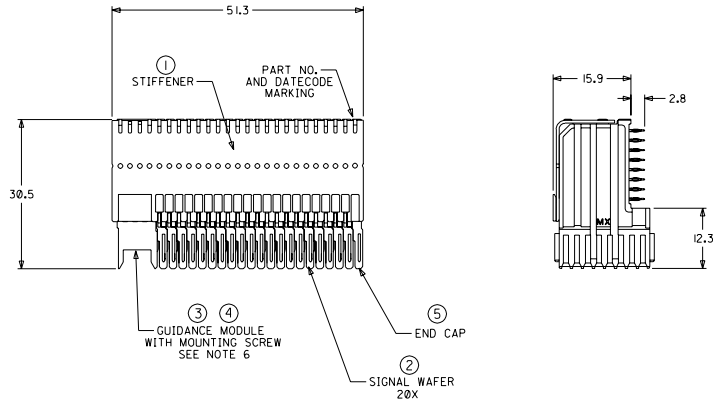
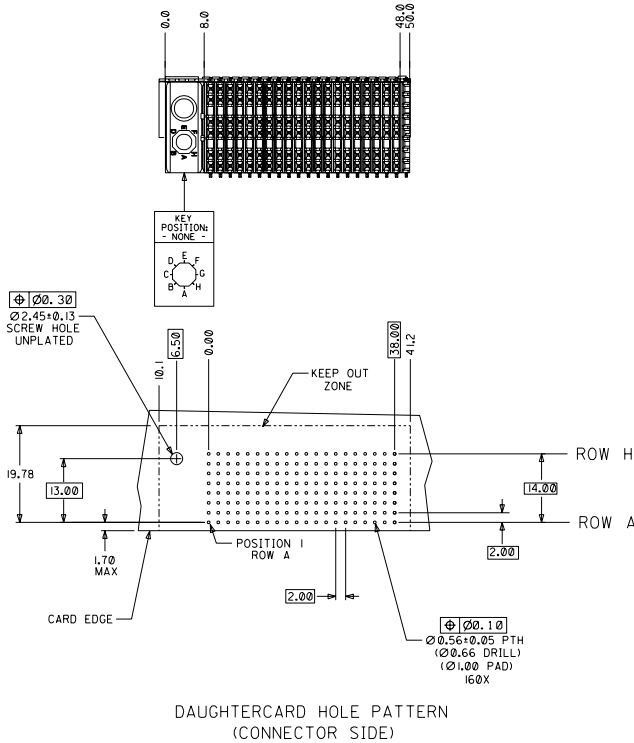


CUSTOMER: STARENT



- NOTES: (UNLESS OTHERWISE SPECIFIED)
1. MATERIALS: HOUSING - LIQUID CRYSTAL POLYMER (LCP), GLASS-FILLED, UL94V-0, BLACK.
TERMINALS - HIGH PERFORMANCE COPPER ALLOY, STIFFENER - STAINLESS STEEL.
 2. FINISH: SELECTIVE GOLD (Au) IN CONTACT AREA, 0.00076mm MINIMUM THICKNESS; SELECTIVE TIN/LEAD (Sn/Pb) ON PCB TAILS, NICKEL (Ni) OVERALL.
 3. REFER TO MOLEX PRODUCT SPECIFICATION PS-74031-999 FOR PERFORMANCE SPECIFICATIONS.
 4. REFER TO MOLEX DOCUMENT SD-74681-002 FOR ADDITIONAL DETAIL ON THE HSD SIGNAL WAFER.
 5. REFER TO MOLEX DOCUMENT SD-74037-006 FOR ADDITIONAL DETAIL ON THE GUIDANCE MODULE.
 6. MOUNTING SCREWS WILL BE BAGGED WITH EACH CONNECTOR.
 7. PARTS ARE PACKAGED IN TUBES PER PK-70873-5041.



ITEM	PART NUMBER	DESCRIPTION	QTY
1	74046-0051	STIFFENER	1
2	74681-0001	HSD8 WAFER	20
3	74037-0008	POLARIZING/GUIDE MODULE	1
4	73726-0000	GUIDE MODULE MNTG SCREW	1
5	74038-1001	END CAP	1

STARENT PART NO.: 121-00-0022

CHANGED PART NO. EC NO. UDT2002-1338 CHKD: ATP 02/05/06 CHKD: LAURX 02/05/06 APPR: BIXLER 02/05/06	QUALITY SYMBOLS MAJOR CRITICAL	GENERAL TOLERANCES: (UNLESS SPECIFIED)		SCALE 2 : 1	DESIGN UNITS mm <input checked="" type="checkbox"/> INCH <input type="checkbox"/>	DIMENSIONS: mm <input type="checkbox"/> INCH <input type="checkbox"/>	SHT	REV					
		4 PLACES ±0. -- ±. --	3 PLACES ±0. -- ±. --	2 PLACES ±0. -- ±. --	1 PLACE ±0. -- ±. --	ANGULAR: ± 2°	DRAWN BY & DATE ATP 01/07/05		TITLE: 8 ROW HSD DAUGHTERCARD ASSEMBLY SALES DRAWING				
REV B	DESCRIPTION	DRAWN BY & DATE LAURX 01/07/05		CHECKED BY & DATE LAURX 01/07/05		APPROVED BY & DATE BIXLER 01/07/05		MATERIAL NO. SD-74680-046		DRAWING NO. SD-74680-046		SHEET NO. 1 OF 1	
		DRAFT WHERE APPLICABLE MUST REMAIN WITHIN DIMENSIONS		THIS DRAWING CONTAINS INFORMATION THAT IS PROPRIETARY TO MOLEX INCORPORATED AND SHOULD NOT BE USED WITHOUT WRITTEN PERMISSION.		MOLEX MOLEX INCORPORATED		SIZE D					