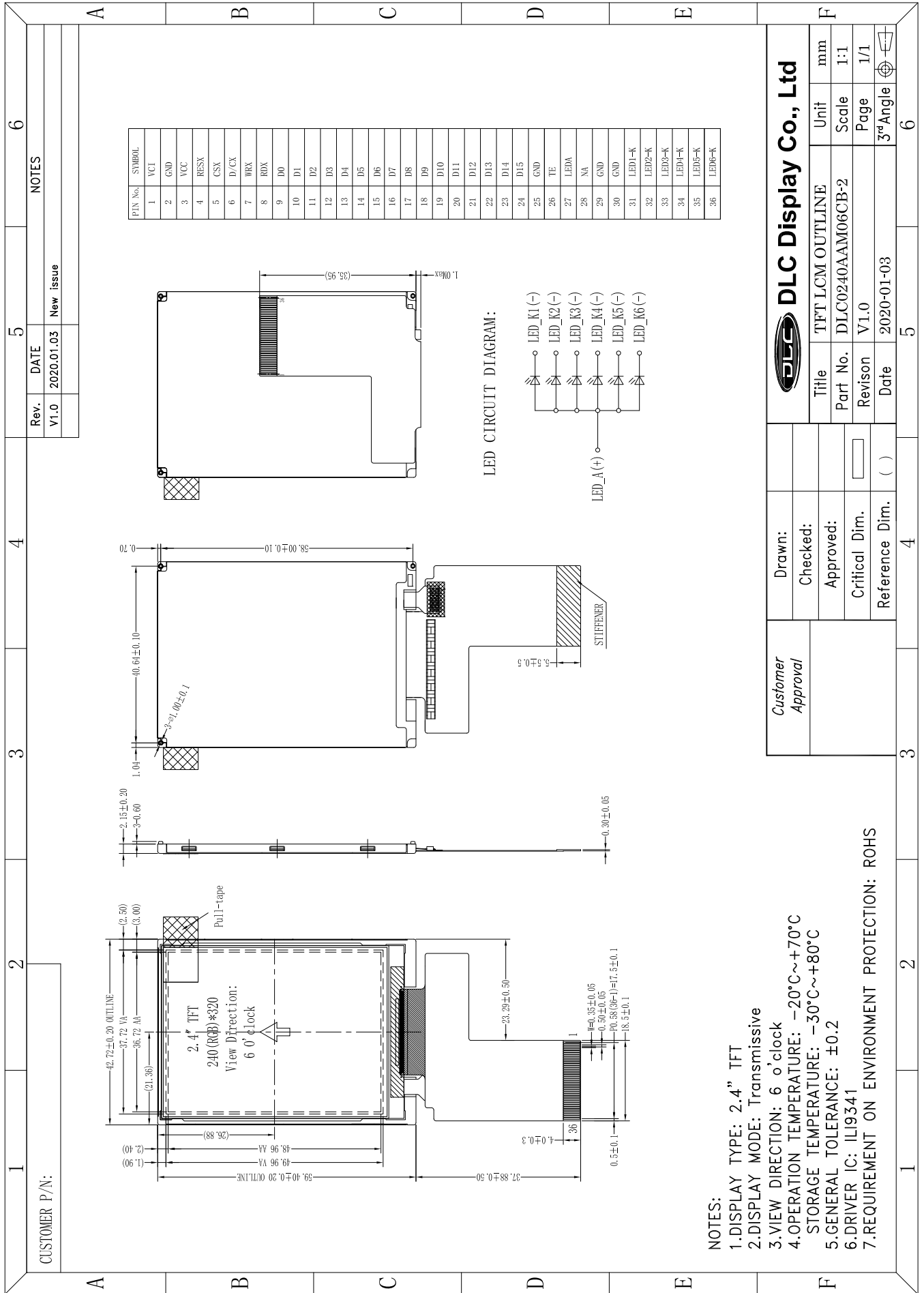


Outline Drawing



NOTES:

1. DISPLAY TYPE: 2.4" TFT
2. DISPLAY MODE: Transmissive
3. VIEW DIRECTION: 6 o'clock
4. OPERATION TEMPERATURE: -20°C~+70°C
5. STORAGE TEMPERATURE: -30°C~+80°C
6. GENERAL TOLERANCE: ±0.2
7. DRIVER IC: ILI9341
7. REQUIREMENT ON ENVIRONMENT PROTECTION: ROHS

**DLC Display Co., Ltd**

Customer Approval	Drawn:	Checked:	Approved:	Critical Dim.	Reference Dim.
Title		TFT LCM OUTLINE		Unit	mm
Part No.		DLC0240AAM06CB-2		Scale	1:1
Revision		V1.0		Page	1/1
Date		2020-01-03		3rd Angle	