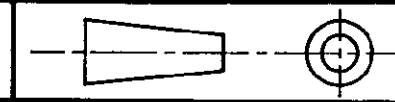
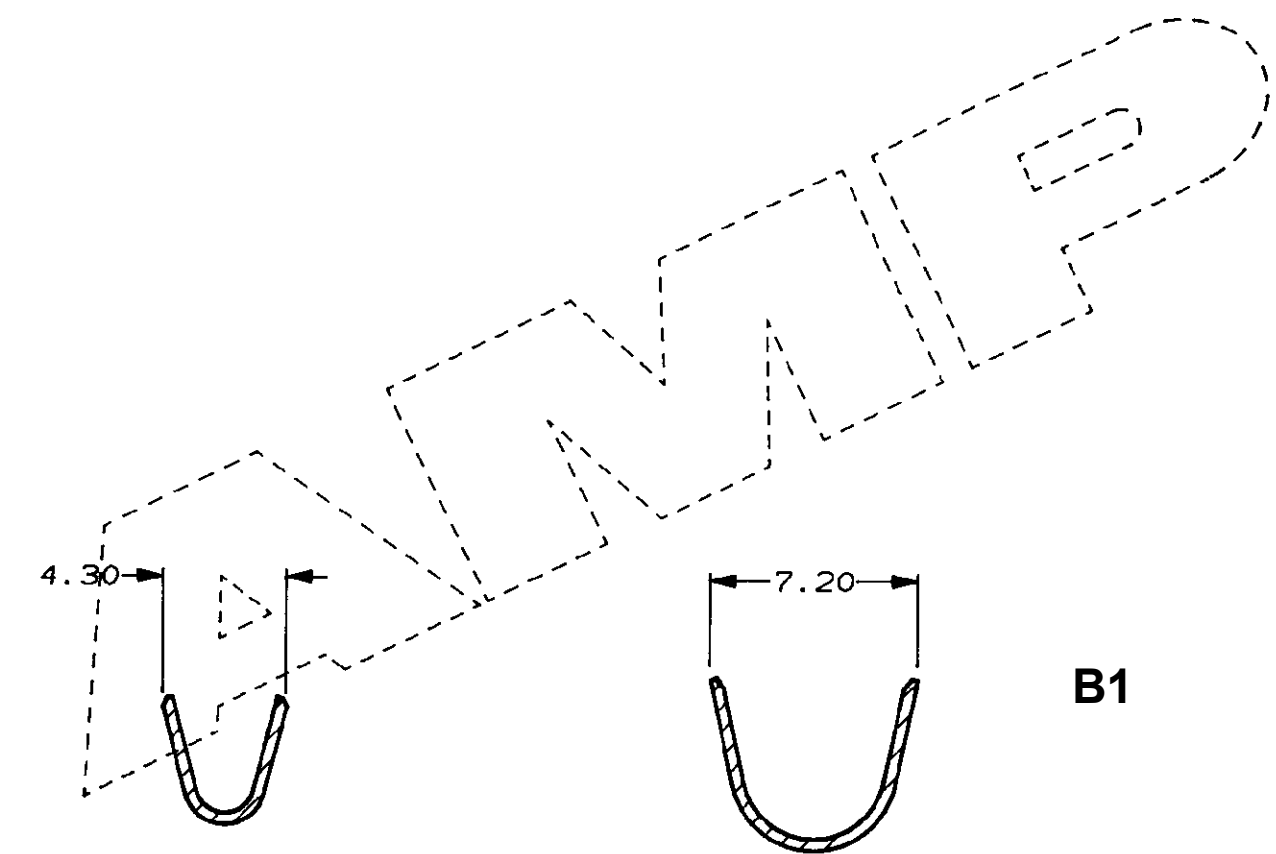
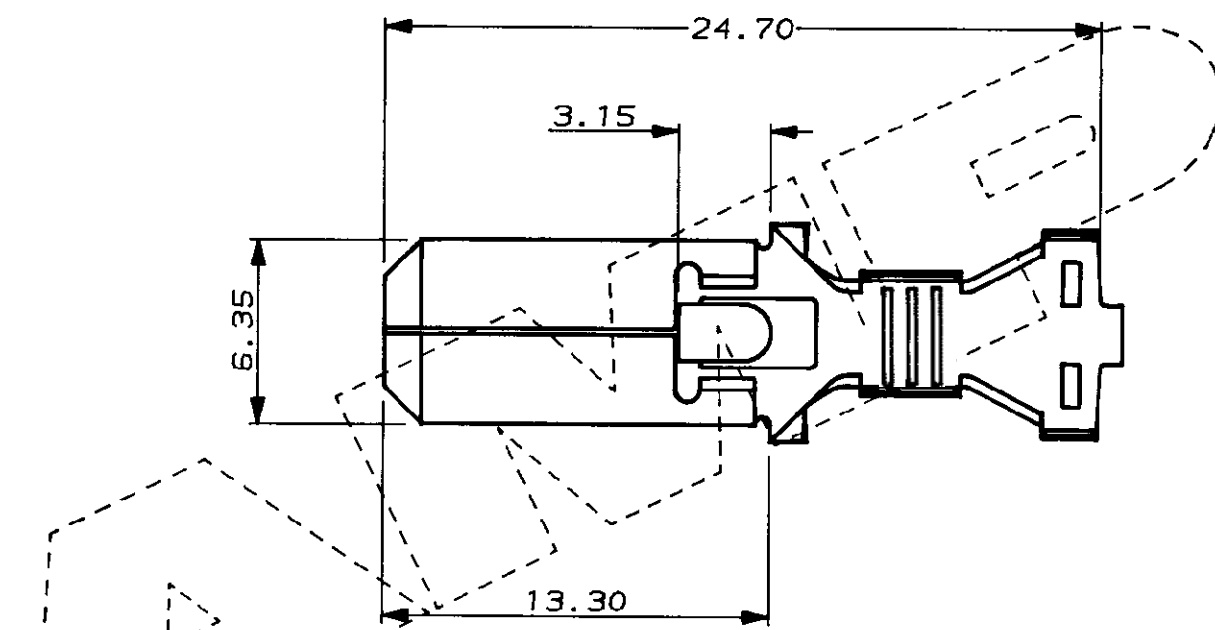


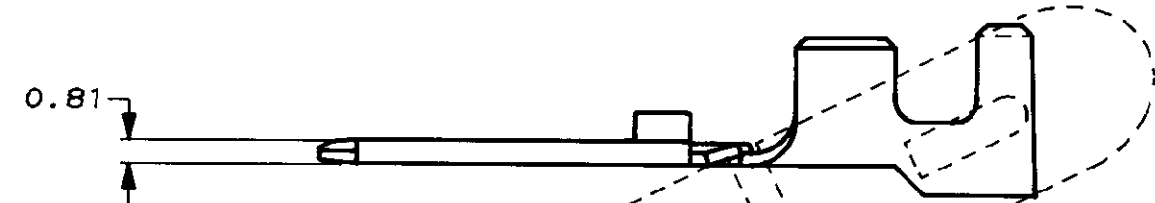
DO NOT SCALE DIMENSIONS IN MM.



C.A.D. FILE CODE
C344008



B1



WIRE RANGE 2.00 TO 3.00 MM²
 INS. RANGE 4.10 TO 5.50 MM DIA. INC. SEAL
 (ONLY THIN WALLED CABLE 2.20 TO 3.40 MM DIA. IS SUITABLE)

TIN PLATED		BRASS		344008-1	
FINISH		MATERIAL		PART NUMBER	
CUSTOMER DWG FOR REFERENCE ONLY		©COPYRIGHT 1987 BY AMP OF GREAT BRITAIN LTD. ALL INTERNATIONAL RIGHTS RESERVED. ALL PRODUCTS MAY BE COVERED BY BRITISH AND FOREIGN PATENTS AND/OR PATENTS PENDING.		RELEASED FOR PUBLICATION 23/06/87	
-	-	TOLERANCES UNLESS OTHERWISE STATED :		DR. R. RUNAGALL 23/06/87	
-	-	DEC ± 0.5		CH. R. J. S. APP. B. J.	
-	-	ANGLES ± 1°			
B1	ECR-20-001446 SCK 30JAN2020	NAME .250 SERIES TAB HIGH CURRENT ECONOSEAL 3 (SEALED APPLICATIONS)			
B	EBA0-0001-05 RS/MG 20.1.05	SCALE	LOC	SIZE	DWG.No.
A	UPDATED C5241 18.5.88	4/1	E	A3	C344008
O	REL. FOR PROD. C4887 8.3.88	REV	APPROVED	ECN	DATE
REV	APPROVED	ECN	DATE	4/1	E A3 C344008
					REV SHEET
					B1 1/1