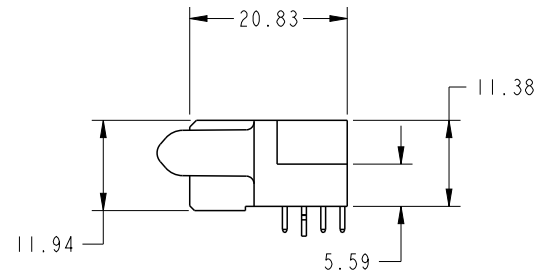
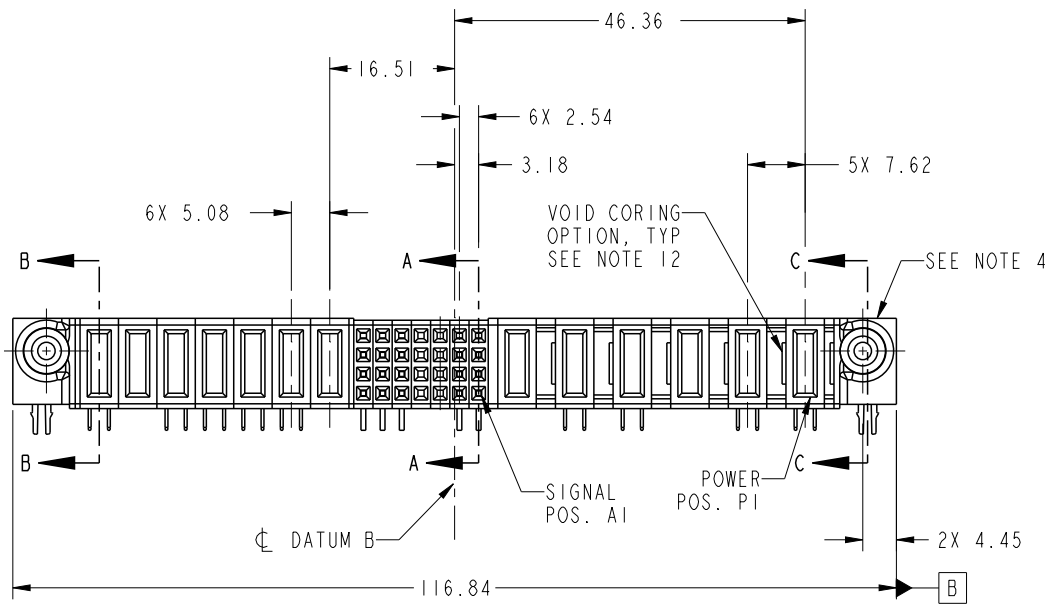


PRODUCT NO. 51915-359-- NOTE 3	ROWS DCBA	POWER						SIGNAL							POWER						
		E2	P13	P12	P11	P10	P9	P8	P7	7	6	5	4	3	2	1	P6	P5	P4	P3	P2
		PA	X	PA	PA	PA	PA	X	H	H	X	X	H	H	X	PA	PA	X	PA	PA	
									G	G	X	X	G	G							
									F	F	X	X	F	F							
									E	E	X	X	E	E							



CODE	DIM "M" MATING LENGTH	CONTACT TYPE
PA	[1.07]	POWER
H	[N/A]	SIGNAL
G	[N/A]	SIGNAL
F	[N/A]	SIGNAL
E	[N/A]	SIGNAL
HA	[N/A]	HOLD-DOWN
X	OMITTED	OMITTED

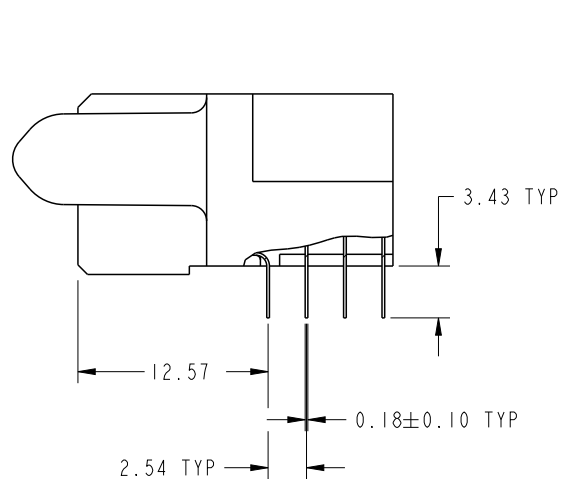
spec ref	SEE NOTES			dr	X Q Wang	2012/05/10	projection 	MM ←→	size	A4	scale	1:1	
tolerance std	TOLERANCES UNLESS OTHERWISE SPECIFIED			eng	Luo Weller	2013/04/12			ecn no	-	rel level	Released	
SEE NOTES				chr	-	-							
surface	✓	linear	0.X	±0.50	FCI www.fci.com	6ACP + 28S + 7DCP R/A SOLDER RECEPTACLE	product family	PwrBlade	rel level	51915-359	rev	A	
			0.XX	±0.25									
			0.XXX	±0.10									
		angular	0°	±2°	cat. no.	Product - Customer Drw	sheet 1 of 4						



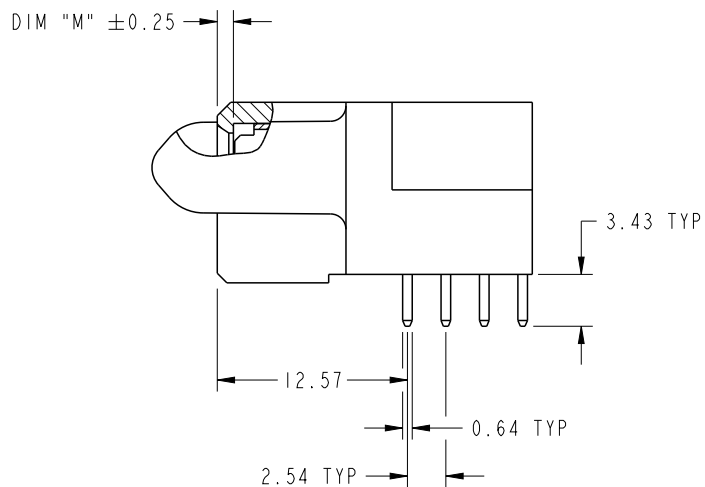
Copyright FCI.

PRODUCT NUMBER

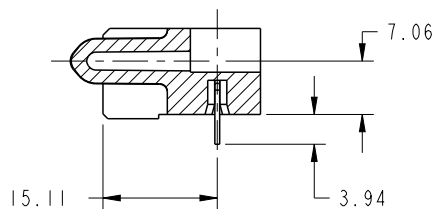
51915-359__
NOTE 3



BROKEN-OUT SECTION A-A
SCALE 2:1



BROKEN-OUT SECTION B-B
SCALE 2:1



SECTION C-C

dr	X Q Wang	2012/05/10	projection 	MM ←————→	size	A4	scale	1:1	
eng	Luo Weller	2013/04/12			ecn no	-			
chr	-	-			rel level	Released			
appr	Pei-Ming Zheng	2013/04/12	product family	PwrBlade					
		title	6ACP + 28S + 7DCP R/A SOLDER RECEPTACLE		dwg no	51915-359		rev	A
www.fci.com		cat. no.	Product - Customer Drw			sheet 2 of 4			

PRODUCT NUMBER

51915-359__
NOTE 3

NOTES:

1. DIMENSIONS AND TOLERANCES ARE IN ACCORDANCE WITH ASME Y14.5M, 1994 UNLESS OTHERWISE SPECIFIED.

CONNECTOR NOTES:

- 2. HOUSING MATERIAL: UL 94 V-0 GLASS FILLED HIGH-TEMP THERMOPLASTIC
POWER CONTACT MATERIAL: COPPER ALLOY
SIGNAL PIN MATERIAL: COPPER ALLOY
 - 3. SEE ITEM 5 & 6 IN PRINT 10064183 FOR PLATING SPEC OF 51915-359 AND 51915-359LF RESPECTIVELY.
 - 4. MANUFACTURER'S NAME, DATE CODE AND OPTIONAL P/N TO APPEAR ON THIS SURFACE. THE P/N CAN BE OMITTED IF THERE IS NOT ENOUGH SPACE ON THIS SURFACE.
 - 5. PRODUCT SPECIFICATION GS-12-149.
APPLICATION SPECIFICATION BUS-20-067.
 - 6. PACKAGED IN TRAYS.
- PCB NOTES:
- 7. ALL HOLE DIAMETERS ARE FINISHED HOLE SIZE.
 - 8. MOUNTING HOLES, WHERE APPLICABLE, ARE UNPLATED.
 - 9. $\varnothing 1.151 \pm 0.025$ DRILLED HOLES PLATED WITH
0.008 MIN SnPb OR Sn OVER 0.03
TO 0.08 Cu PLATING TO ACHIEVE
 $\varnothing 1.02 \pm .07$ HOLE.
 - 10. "DIM XXX" TO BE DETERMINED BY THE CUSTOMER.
 - 11. CONNECTOR KEEP-OUT ZONE.
 - 12. THE VOID CORING IN BETWEEN POWER MODULES, SIGNAL MODULES AND END MODULES ARE OPTIONAL AND THE SHAPE MAY BE DIFFERENT FOR OPTIMIZE THE MOLDING PROCESS. THE VOID CORING WILL NOT EFFECT TO PRODUCT FUNCTION.

dr	X Q Wang	2012/05/10	projection 	MM 	size	A4	scale	1:1
eng	Luo Weller	2013/04/12			ecn no	-		
chr	-	-			product family	PwrBlade	rel level	Released
appr	Pei-Ming Zheng	2013/04/12			title 6ACP + 28S + 7DCP R/A SOLDER RECEPTACLE	dwg no 51915-359	rev A	
www.fci.com		cat. no.	Product - Customer Drw			sheet 4 of 4		



Copyright FCI.