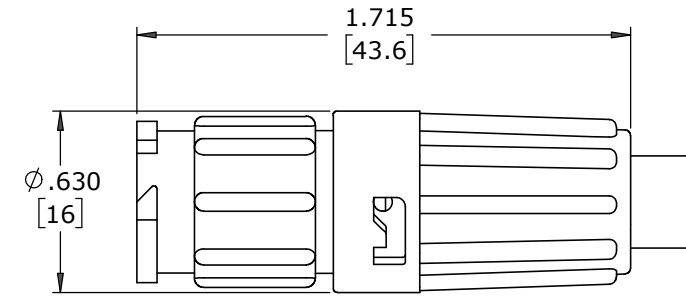


NOTES:
 1. ALL PARTS TO BE BULK PACKED.
 2. CONTACTS SHIPPED UNASSEMBLED
 3. ALL DIMENSIONS ARE REFERENCE EXCEPT THOSE WITH A TOLERANCE

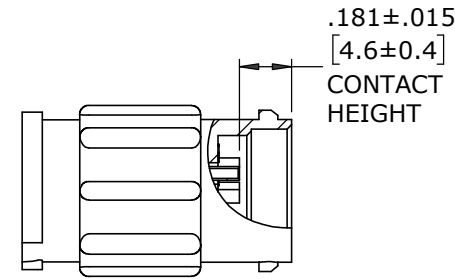
ASS'Y P/N	CABLE O.D.
W8880-XPG-P-513	.130-.150 [3.3-3.8]
W8880-XPG-P-516	.160-.180 [4.1-4.6]
W8880-XPG-P-519	.190-.210 [4.8-5.3]
W8880-XPG-P-522	.220-.250 [5.6-6.3]
W8880-XPG-P-526	.250-.270 [6.3-6.9]
W8880-XPG-P-528	.265-.285 [6.7-7.2]

ASSEMBLY P/N	CONTACT QTY
W8880-8PG-P-5XX	8
W8880-9PG-P-5XX	9
W8880-10PG-P-5XX	10
W8880-XPG-P-5XX	

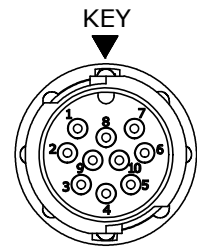
GROMMET SIZE
 NUMBER OF CONTACTS



SHOWN ASSEMBLED
 FOR CUSTOMER REFERENCE ONLY

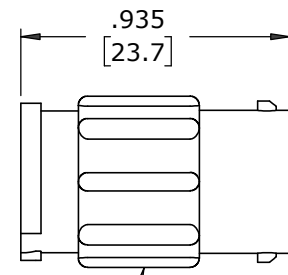


.181±.015
 [4.6±0.4]
 CONTACT HEIGHT



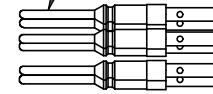
MATING FACE
 W8880-10PG-P-5XX SHOWN

CABLE-TO-CABLE HOUSING, MALE
 MAT'L: UV PBT, BLACK

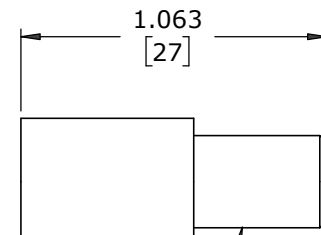


.935
 [23.7]

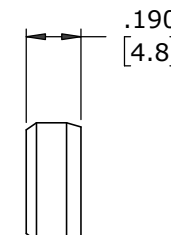
(8-10) #22 PIN CONTACTS, CRIMP
 MAT'L: COPPER ALLOY, GOLD PLATED



GROMMET
 MAT'L: SANTOPRENE, BLACK

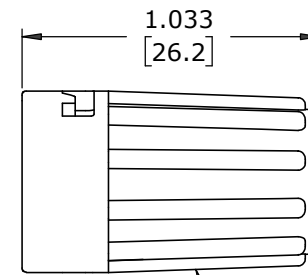


1.063
 [27]



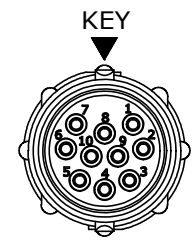
.190
 [4.8]

CABLE GRIP
 MAT'L: POLYPROPYLENE, BLACK

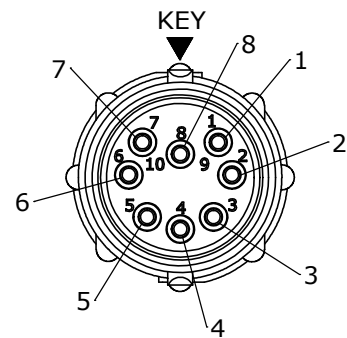


1.033
 [26.2]

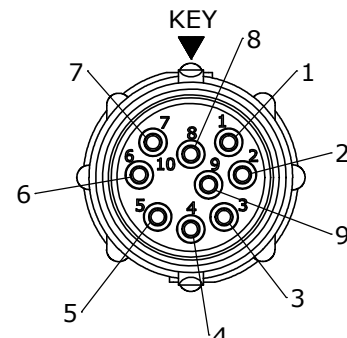
BACKSHELL
 MAT'L: UV PBT, BLACK



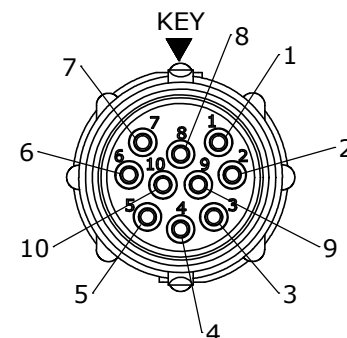
WIRING END
 W8880-10PG-P-5XX SHOWN
 WITHOUT HARDWARE



WIRING END
 W8880-8PG-P-5XX



WIRING END
 W8880-9PG-P-5XX



WIRING END
 W8880-10PG-P-5XX

CUSTOMER APPROVAL
 THIS DOCUMENT CONTAINS CONFIDENTIAL INFORMATION PROPRIETARY TO CONXALL CORPORATION. ANY REPRODUCTION, DISCLOSURE, OR USE OF THIS DOCUMENT /INFORMATION IS EXPRESSLY PROHIBITED UNLESS AUTHORIZED IN WRITING BY CONXALL CORPORATION.
 APPROVED BY: _____
 DATE: _____

RoHS COMPLIANT

MA	07-14-20	RELEASED PER PDR 16014-10
PNK	03-20-18	PDR 16014
REV.	INIT.	DATE
ALL INFORMATION ILLUSTRATED IS THE PROPERTY OF "CONXALL CORPORATION". UNAUTHORIZED DUPLICATION OR DISTRIBUTION OF THIS DOCUMENT IS PROHIBITED.		ORIG. DRAWN BY: PNK DATE: 03-20-18
ALL UNITS ARE IN FEET, INCHES, FRACTION OF INCHES AND DECIMALS. UNLESS OTHERWISE SPECIFIED TOLERANCES: 3 PLACE DECIMALS ±.010 ANGLES ±1° FRACTIONS ±1/16 - CRITICAL CHARACTERISTIC FLAG PER SPEC. XXXX		CHECKED BY: APPROVED BY:
SCALE	SIZE	SHEET
NTS	B	1 OF 1
FILE:	DIRECTORY:	PART NUMBER:
W8880-XPG-P-5XX	SLW	W8880-XPG-P-5XX
TITLE: CABLE-TO-CABLE ASSEMBLY (8-10) #22 PIN CONTACTS, CRIMP INSTA-CLICK™ MINI-CON-X		CUSTOMER: STANDARD PRODUCT
REV. A		REV. A



601 E. WILDWOOD VILLA PARK, IL 60181