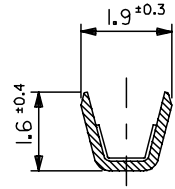
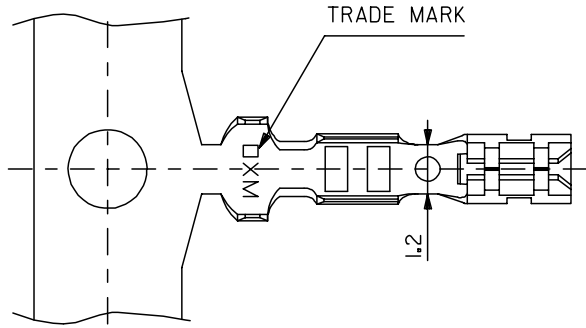
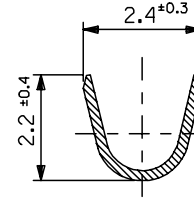


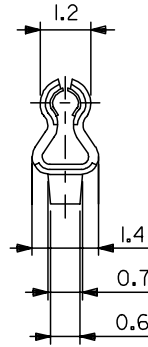
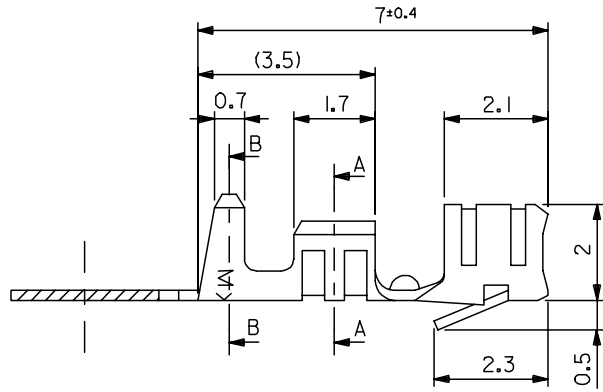
10 9 8 7 6 5 4 3 2 1



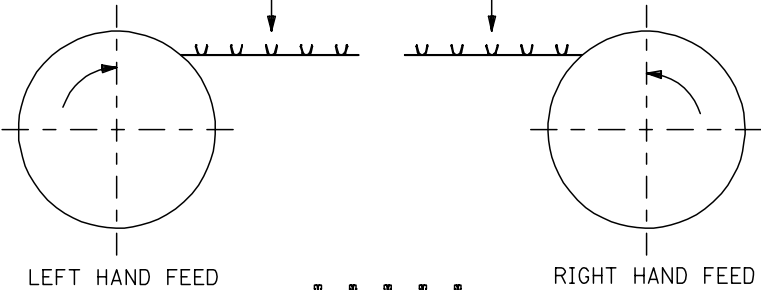
SECT. A-A



SECT. B-B

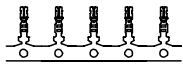


- NOTE
- 1.MATERIAL : PHOSPHOR BRONZE
 - 2.FINISH:TIN PLATING UNDER NICKEL PLATING WITH LUBRICANT TREATMENT
 - 3.SUITABLE HOUSING : 5264SERIES
 - 4.WIRE RENG# AWG #22-28(0.33 - 0.08mm²)
 - 5.INSULATION RANGE:∅ 1.15 - ∅ 1.9



LEFT HAND FEED

RIGHT HAND FEED



VIEW C

SEE NOTE 2.(BRIGHT)	LEFT HAND	08-70-1048	5263PBTB	CHAIN
SEE NOTE 2.	LEFT HAND	08-70-1047	5263PBTT	CHAIN
FINISH	FEED TYPE	EDP NO.	ENG. NO.	FORM

REVISED EC NO: J2007-0263 DRWN:AOYAGI 2006/08/01 CHKDK:TOYODA 2006/08/02 APPR:NUKITA 2006/08/04	GENERAL TOLERANCES (UNLESS SPECIFIED)		DIMENSION STYLE MM ONLY	SCALE 10:1	DESIGN UNITS METRIC	THIRD ANGLE PROJECTION
	10 UNDER	± 0.2	DRAWN BY K.TOYODA	DATE '05/07/08	TITLE 2.5 LOW PROFILE CRIMP RECEPTACLE WITH LUBRICANT	
	10 OVER 30 UNDER	± 0.25	CHECKED BY N.UKITA	DATE '05/07/08	MOLEX INCORPORATED	
	30 OVER	± 0.3	APPROVED BY N.UKITA	DATE '05/07/08	DOCUMENT NO. SD-5263-001	SHEET NO. 1 OF 1
A	DESCRIPTION	ANGULAR ± 3 °	MATERIAL NO. SEE CHART		DRAFT WHERE APPLICABLE MUST REMAIN WITHIN DIMENSIONS	
THIS DRAWING CONTAINS INFORMATION THAT IS PROPRIETARY TO MOLEX INCORPORATED AND SHOULD NOT BE USED WITHOUT WRITTEN PERMISSION						