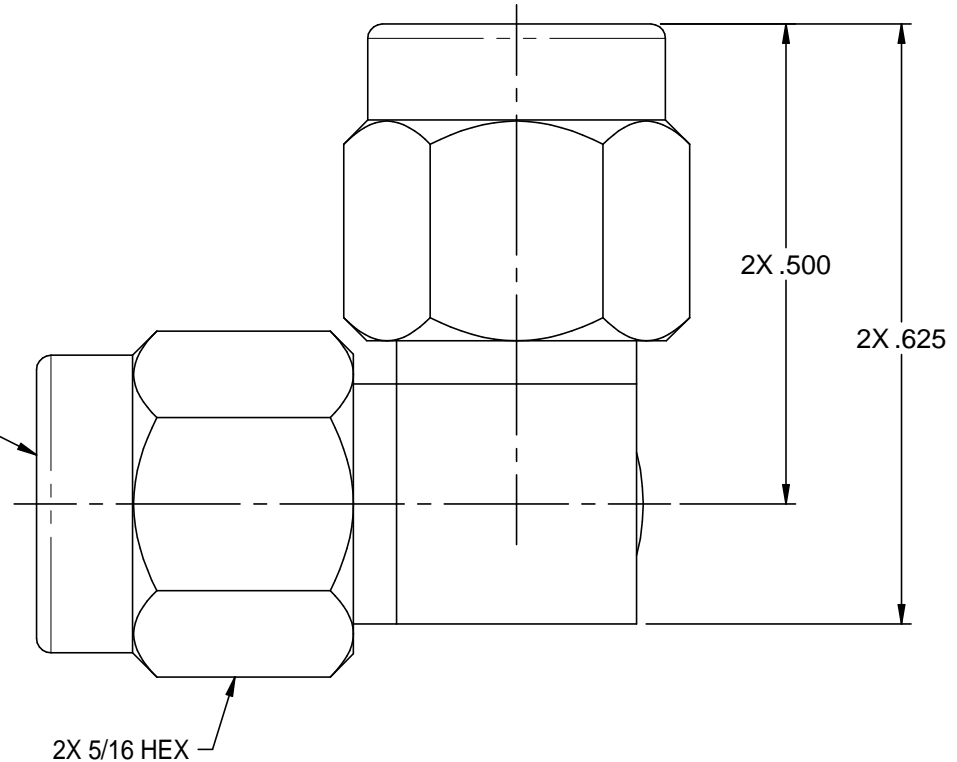


2X SMA PLUG
PER MIL-STD-348
FIGURE 310-1



NOTES: UNLESS OTHERWISE SPECIFIED.

1. MATERIAL & FINISH:

- 1.1 HOUSING & COUPLING NUTS: PASSIVATED STAINLESS STEEL
- 1.2 DIELECTRIC: PTFE (TEFLON)
- 1.3 CENTER CONTACT: GOLD PLATED BERYLLIUM COPPER
- 1.4 GASKET: SILICONE RUBBER

2. MECHANICAL:

- 2.1 CENTER CONTACT CAPTURE IN ACCORDANCE WITH MIL-A-55339.

3. ELECTRICAL:

- 3.1 FREQUENCY: DC - 18 GHz
- 3.2 VSWR: 1.05+.010f(GHz)

4. ALL OTHER MECHANICAL, ELECTRICAL AND ENVIRONMENTAL CHARACTERISTICS ARE IN ACCORDANCE WITH MIL-A-55339/2.

<p>EMERSON Network Power Connectivity Solutions</p> <p><small>This PROPRIETARY Document is property of Emerson Network Power Connectivity Solutions. It is confidential, non-transferable, and issued with the clear understanding that it is not tracked or copied without permission and is retrievable upon demand.</small></p> <p><small>INTERPRET DRAWING IN ACCORDANCE WITH ASME Y14.5-2009.</small></p>	<p>3RD ANGLE PROJECTION</p>	<h2>Midwest Microwave</h2>	
	<p>RoHS2 <input checked="" type="checkbox"/></p> <p>2011/65/EU</p>	<p>Title: SMA RT ANGLE PLUG TO PLUG ADAPTER</p>	
<p>UNLESS OTHERWISE SPECIFIED</p> <p>UNITS: INCH</p> <p>.XX ±.02</p> <p>.XXX ±.005</p> <p>ANGLES ±2°</p>	<p>Model No. ADT-8000-MM-SMA-02-01</p>		
<p>Size A</p>	<p>DO NOT SCALE DRAWING</p>	<p>Date: 3/28/2014</p>	<p>Sheet 1 of 1</p>