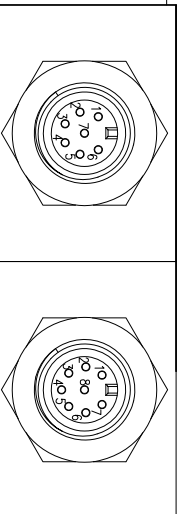
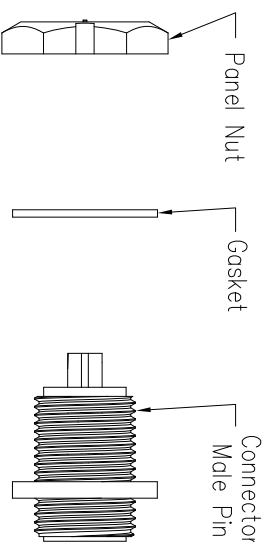
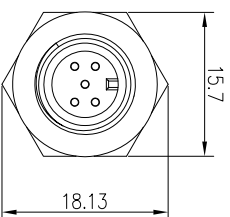
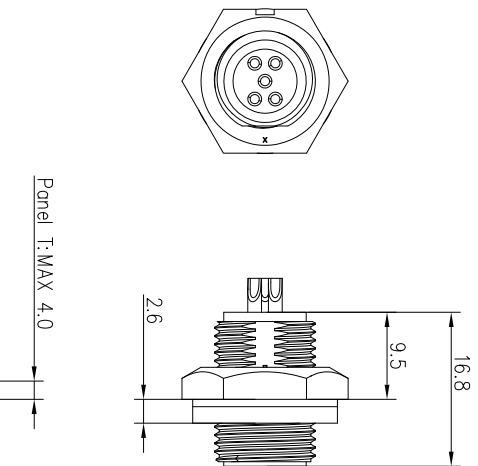
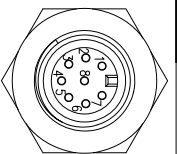


Recommended Panel Cut-out



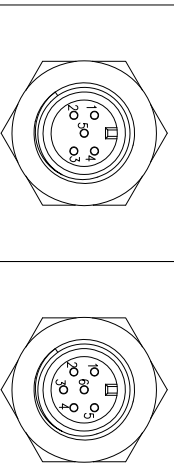
7 Pin

P/N: 21007515-03



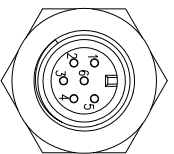
8 Pin

P/N: 21008515-03



5 Pin

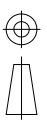
P/N: 21005515-03



6 Pin

P/N: 21006515-03

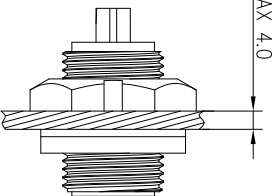
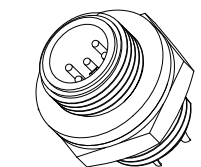
Pin Assignments Front View



DESCRIPTION
Mini Series Screw Type
Rear Mount With Male Pin

TOLERANCE
.X
.XX
.XXX
ANGLES

SCALE: 4:5
SHEET 1 OF 1
REV: C1
SIZE A4
*: Inspection Item



Specification:

1. Operation Temperature: -45°C~105°C.
2. Insulation Resistance: 100MΩ at DC 500V.
3. Contact Resistance: <10mΩ.
4. Withstand Voltage: 1300V AC.
5. Operating Current: 2A.
6. Operating Voltage: AC 110V.
7. Waterproof Rate: IP67(Mated).
8. Connector: Nylon+GF, Black.
9. Panel Nut: Nylon, Black.
10. Gasket: Silicon, Gray.
11. Male Pin: Copper Alloy Gold Plated.
12. Torque Rate: 0.5~0.7N • m.
13. RoHS Compliant.
14. UL Compliant.
15. Mating Cap P/N: 806-00028-00

CHOGORI

REV.	ECN NO.	DESCRIPTION	SIGN	DATE
C1	N/A	INITIAL DRAWING	Victory	2019/08/23

PART NO	DRAWN BY	DATE
21XXX515-03	Victory	2019/08/23
DWG NO	CHECKED BY	DATE
	Ivan	2019/08/23
CUSTOMER	APPROVED BY	DATE
	Ponson	2019/08/23