

4

3

2

1

THIS DRAWING IS UNPUBLISHED.

RELEASED FOR PUBLICATION

© COPYRIGHT

ALL RIGHTS RESERVED.

LOC DIST

REVISIONS

P	LTR	DESCRIPTION	DATE	DWN	APVD
	D2	REACTIVATED	15MAY2012	LG	TE


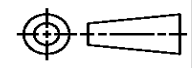
# REPLACED BY OCEAN STYLE APPLICATOR PART NUMBER 2151058-6

FOR REPLACEMENT PARTS FOR APPLICATOR 1911094 REFER TO ADDITIONAL PAGE(S). SPARE PARTS KIT (IF LISTED) WILL REMAIN AVAILABLE.

THE REPLACEMENT OCEAN STYLE APPLICATOR HAS THE SAME TERMINATOR/PRESS INTERFACE AS APPLICATOR 1911094

Dimensioning and tolerancing per ASME Y14.5M-2009

A

THIS DRAWING IS A CONTROLLED DOCUMENT.		DWN BOB HIGMAN	 TE Connectivity			
DIMENSIONS:		CHK T.ELBIN				
TOLERANCES UNLESS OTHERWISE SPECIFIED:		APVD M.CLIFFORD	NAME			
		PRODUCT SPEC	SIDE FEED SYSTEM III APPLICATOR			
		APPLICATION SPEC				
MATERIAL	FINISH	WEIGHT	SIZE A3	CAGE CODE	DRAWING NO C-1911094	RESTRICTED TO
			SCALE	SHEET 1 OF 2	REV D2	

1470-19 (3/11)

Pr o/ENGINEER DRAWING

Dimensioning and tolerancing per ASME Y14.5M-2009

8		7		6		5		4		3		2		1	
THIS DRAWING IS UNPUBLISHED. RELEASED FOR PUBLICATION															
COPYRIGHT 20 BY TYCO ELECTRONICS CORPORATION. ALL RIGHTS RESERVED.															
PART NUMBER	REV	DESCRIPTION	PROGRAMMED MEMORY CHIP												
1911094-1	D	CUTS CARRIER	8-1911094-1												
1911094-6	D	CONTINUOUS CARRIER	8-1911094-6												
7-1911094-1	D	-1 AND SPARE PARTS	9-1911094-1												
7-1911094-6	D	-6 AND SPARE PARTS	9-1911094-6												
7-1911094-7	A	SPARE PARTS KIT	-												

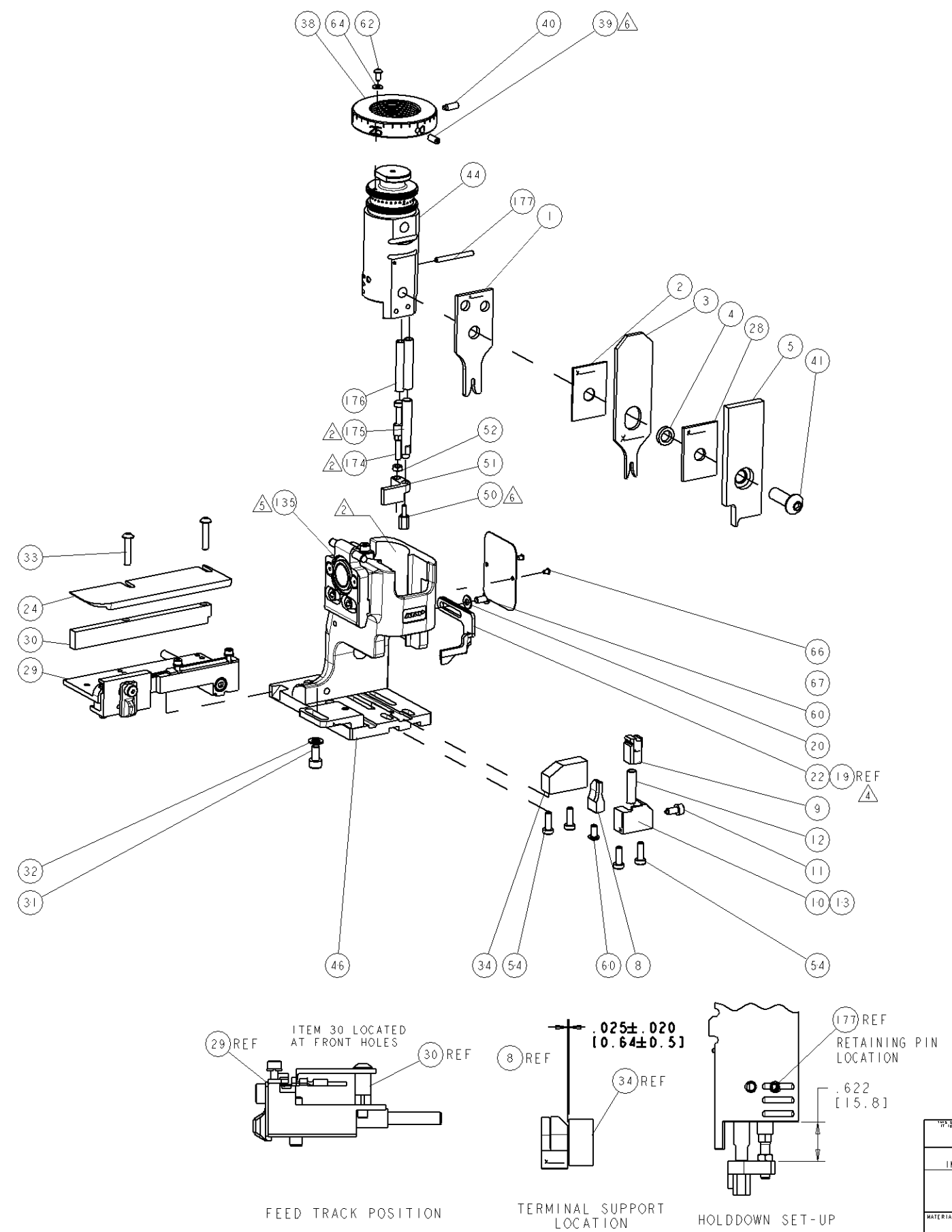
APPLICATOR DATA		
CRIMP	SIZE	TYPE
WIRE	2.03mm [.080]	F
INSUL	2.54mm [.100]	O
APPL INSTRUCTIONS 408-10135		

TERMINAL DATA: TE TERMINAL		TYCO ELECTRONICS CRIMP SPEC	
TERMINAL NAME: TAB 1.6x0.6 MM, TYP A			
WIRE STRIP LENGTH		INSULATION DIAMETER RANGE	
3.7-4.3 mm [.145-.169 IN]		1.40-2.10mm [.055-.082 IN]	
TERMINAL APPL SPEC	114-18082		
TERMINALS APPLIED			
964267-1	964267-2	964267-3	-

WIRE SIZE	CRIMP HEIGHT
1mm <sup>2</sup>	1.36±.05 [.054±.002]
0.85mm <sup>2</sup>	1.31±.05 [.052±.002]
0.75mm <sup>2</sup>	1.27±.05 [.050±.002]
0.7mm <sup>2</sup>	1.25±.05 [.049±.002]
0.5mm <sup>2</sup>	1.18±.05 [.046±.002]

TERMINAL DATA: TE TERMINAL		TYCO ELECTRONICS CRIMP SPEC	
TERMINAL NAME: TAB 1.6x0.6 MM, TYP A			
WIRE STRIP LENGTH		INSULATION DIAMETER RANGE	
3.9-4.4 mm [.153-.173 IN]		1.40-2.10mm [.055-.082 IN]	
TERMINAL APPL SPEC	114-18081		
TERMINALS APPLIED			
964263-2	964263-3	4-964263-1	-

- ⚠ RECOMMENDED SPARE PARTS.
- ⚠ GREASE BEARING SURFACES LIGHTLY.
- 3. LUBRICATE DAILY PER THE APPLICATOR INSTRUCTION SHEET SUPPLIED WITH THE APPLICATOR.
- ⚠ ITEM 19 - OPTIONAL STRIPPER FOR BENCH MACHINE APPLICATIONS.
- ⚠ APPLICATOR SPECIFIC DATA TO BE ENTERED INTO BLANK MEMORY CHIP AT ASSEMBLY.
- ⚠ APPLY P/N 1-23419-5 LOCTITE(R) TO THREADS.



FEED FINGER 1901694-1	SET UP GAGE 1901040-1	LOC A	QTY 66	REVISIONS			
				REV	DATE	BY	APPV
				A	RELEASED	19JUL2007	RD ND
				B	ECR 08-006703	19MAR2008	MEH GB
				C	ECR 09-024287	01NOV2009	MY TE
				D	ECR-11-005803	29MAR2011	XZ TE

QTY	REV	REF	REF	REF	REF	PART NO	DESCRIPTION	ITEM NO
-	1	1	1	1	1	1-993111-6	PIN, SLOTTED SPRING 3.0 X 30.0	177
-	2	2	2	2	2	3-22280-7	SPRING, COMPRESSION	176
-	1	1	1	1	1	1752353-1	GUIDE PIN, HOLDDOWN	175
-	1	1	1	1	1	1901680-1	GUIDE PIN, HOLDDOWN	174
-	REF	REF	REF	REF	REF	SEE TABLE	MEMORY CHIP, PROGRAMMED	135
-	1	1	1	1	1	1633565-1	DOCUMENTATION PACKAGE S111	71
-	1	1	1	1	1	1901048-1	TAG, IDENTIFICATION	67
-	2	2	2	2	2	21017-1	SCREW, DRIVE	66
-	1	1	1	1	1	18028-1	WASHER, FLAT, REG M3	64
-	1	1	1	1	1	1655785-9	SCR, BTN SKT HD CAP (M3 X 6)	62
-	2	2	2	2	2	1655785-1	SCR, BTN SKT HD CAP (M4 X 8)	60
-	4	4	4	4	4	1655783-3	SCR, CAP, SOC HD, LOW HEAD, M4 X 12	54
-	1	1	1	1	1	1-18030-0	NUT, HEX, REG M3.5	52
-	1	1	1	1	1	1901681-1	HOLDDOWN, TERMINAL	51
-	1	1	1	1	1	1-1752354-9	STANDOFF, HOLD-DOWN	50
-	1	1	1	1	1	1752300-1	SF SYSTEM III APPLICATOR	46
-	1	1	1	1	1	1752308-1	RAM	44
-	1	1	1	1	1	2-1655785-3	SCR, BTN SKT HD CAP (M8 X 25)	41
-	1	1	1	1	1	993002-4	SCREW, SET, SFT TIP	40
-	1	1	1	1	1	1962043-1	PLUNGER, BALL, METRIC	39
-	1	1	1	1	1	1752309-1	RING, INSULATION CRIMP	38
-	1	1	1	1	1	1-1752356-3	SUPPORT, TERMINAL	34
-	2	2	2	2	2	3-1655785-3	SCR, BTN SKT HD CAP (M4 X 20)	33
-	1	1	1	1	1	18028-3	WASHER, FLAT, REG M5	32
-	1	1	1	1	1	5-1655316-3	SCR, SKT HD CAP, M5 X 10.0	31
-	1	1	1	1	1	1320908-1	SPACER, STRIP GUIDE	30
-	1	1	1	1	1	1901087-3	ASSEMBLY, STRIP GUIDE	29
-	1	1	1	1	1	1-455888-9	SPACER, CRIMPER	28
-	1	1	1	1	1	1320928-1	PLATE, STRIP GUIDE	24
-	1	1	1	1	1	1976045-1	STRIPPER	22
-	1	1	1	1	1	18028-2	WASHER, FLAT, REG M4	20
-	REF	REF	REF	REF	REF	1752311-1	STRIPPER	19
⚠	1	-	-	-	-	1338684-1	SHEAR HOLDER, FRONT	13
⚠	1	1	1	1	1	3-22280-3	SPRING, COMPRESSION	12
⚠	1	1	1	1	1	356885-4	STOP, SHEAR	11
⚠	-	-	-	-	-	1320921-1	SHEAR HOLDER, FRONT, CUT	10
⚠	1	1	1	1	1	462006-1	FLOATING SHEAR, FRONT	9
⚠	1	2	2	1	1	1333204-3	ANVIL, COMBINATION	8
⚠	1	1	1	1	1	1-455889-4	DEPRESSOR, SHEAR	5
⚠	1	1	1	1	1	238011-4	BLOCK, CRIMPER SPACER	4
⚠	1	2	2	1	1	9-456135-6	CRIMPER, INSULATION O PREMIUM	3
⚠	1	1	1	1	1	455888-7	SPACER, CRIMPER	2
⚠	1	2	2	1	1	1-456405-5	CRIMPER, WIRE PREMIUM	1

DIMENSIONS: INCHES [mm]		TOLERANCES UNLESS OTHERWISE SPECIFIED:		DWN M CLIFFORD 04JUN2007		Tyco Electronics Tyco Electronics Horriaburg, PA 17105-3608	
0 PLC	±	APVD	T BENCHOFF	NAME		SIDE FEED SYSTEM III APPLICATOR	
1 PLC	±	PRODUCT SPEC		SIZE		CASE CODE DRAWING NO	
2 PLC	±	APPLICATION SPEC		A		00779 C-1911094	
3 PLC	±	SEE TABLE		WEIGHT		RESTRICTED TO	
4 PLC	±						
ANGLES	±						
FINISH				CUSTOMER ACCESSIBLE PRODUCTION DRAWING		SCALE 3:5 SHEET 1 OF 1 REV D	