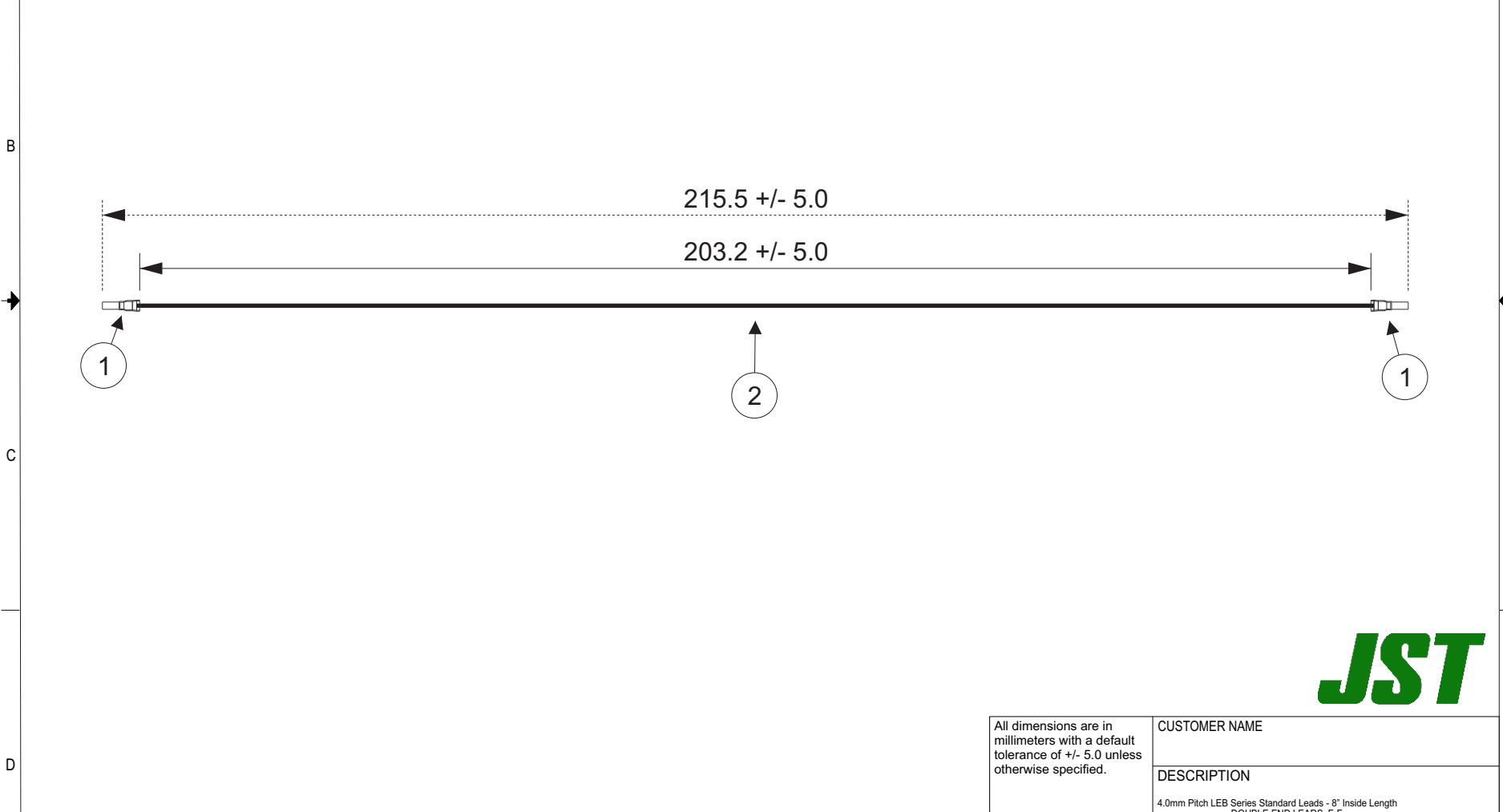


THIS DRAWING CONTAINS INFORMATION THAT IS PROPRIETARY TO J.S.T. AND SHALL NOT BE USED OR SHOWN WITHOUT WRITTEN PERMISSION.

Item No.	Part No.	Description	APPLICABLE HOUSINGS							
1	SLEB-001T-P0.2	LEB Connector Contact	NO. OF CIRCUITS	HOUSING PART NO.						
2	UL1061, 22 AWG	Black	1	LEBRP-01V-S						
<table border="1"> <tr> <td colspan="2"><u>Electrical Specifications</u></td> </tr> <tr> <td colspan="2">Current: 3.0AAC/DC</td> </tr> <tr> <td colspan="2">Voltage: 300V AC/DC</td> </tr> </table>			<u>Electrical Specifications</u>		Current: 3.0AAC/DC		Voltage: 300V AC/DC		2	LEBRP-02V-S
<u>Electrical Specifications</u>										
Current: 3.0AAC/DC										
Voltage: 300V AC/DC										



All dimensions are in millimeters with a default tolerance of +/- 5.0 unless otherwise specified.	CUSTOMER NAME			
	DESCRIPTION 4.0mm Pitch LEB Series Standard Leads - 8" Inside Length DOUBLE END LEADS, F-F			
Drawn By: Larissa Mosley	SIZE	CUSTOMER PART NO.	PART NO.	REV
Checked By: Steven Pilkington	SCALE	ALEBLEB22K203		
	1:1	DRAWING NO. GAM-410	DATE 5/22/2018	

ZONE	REV	DESCRIPTION	DATE	APPROVED
1	1	Add Electrical Specifications	7/02/2018	LM